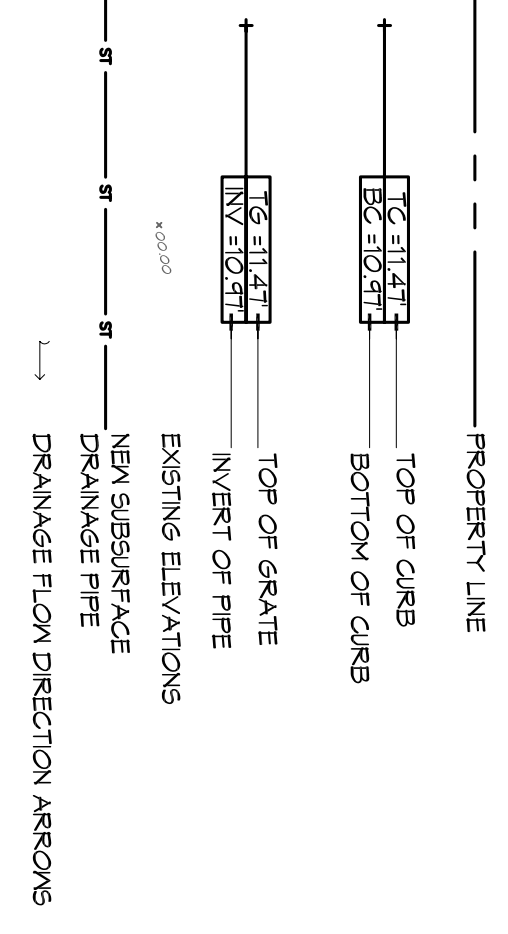


- ### GENERAL SITE DRAINAGE NOTES
1. DRAIN PIPE & FITTINGS WITHIN PROPERTY LINE SHALL BE POLYVINYL CHLORIDE PLASTIC PIPE, MEETING CLASS 100 C-90 PVC.
 2. ELEVATIONS SHOWN ARE M.S.L.
 3. FIELD VERIFY ALL ELEVATIONS AND DRAINAGE SYSTEM PLACEMENT PRIOR TO START OF WORK.
 4. PROVIDE VERTICAL ELBOW AT DOWNPOINETS FOR CONNECTION TO SURFACE DRAINAGE WHERE INDICATED. ELBOW ID SHALL BE SIZED SUCH THAT THE DOWNPOUT CAN BE INSERTED INTO THE PIPE OPENING.

SITE DRAINAGE LEGEND



STORMWATER RUN-OFF CALCULATIONS

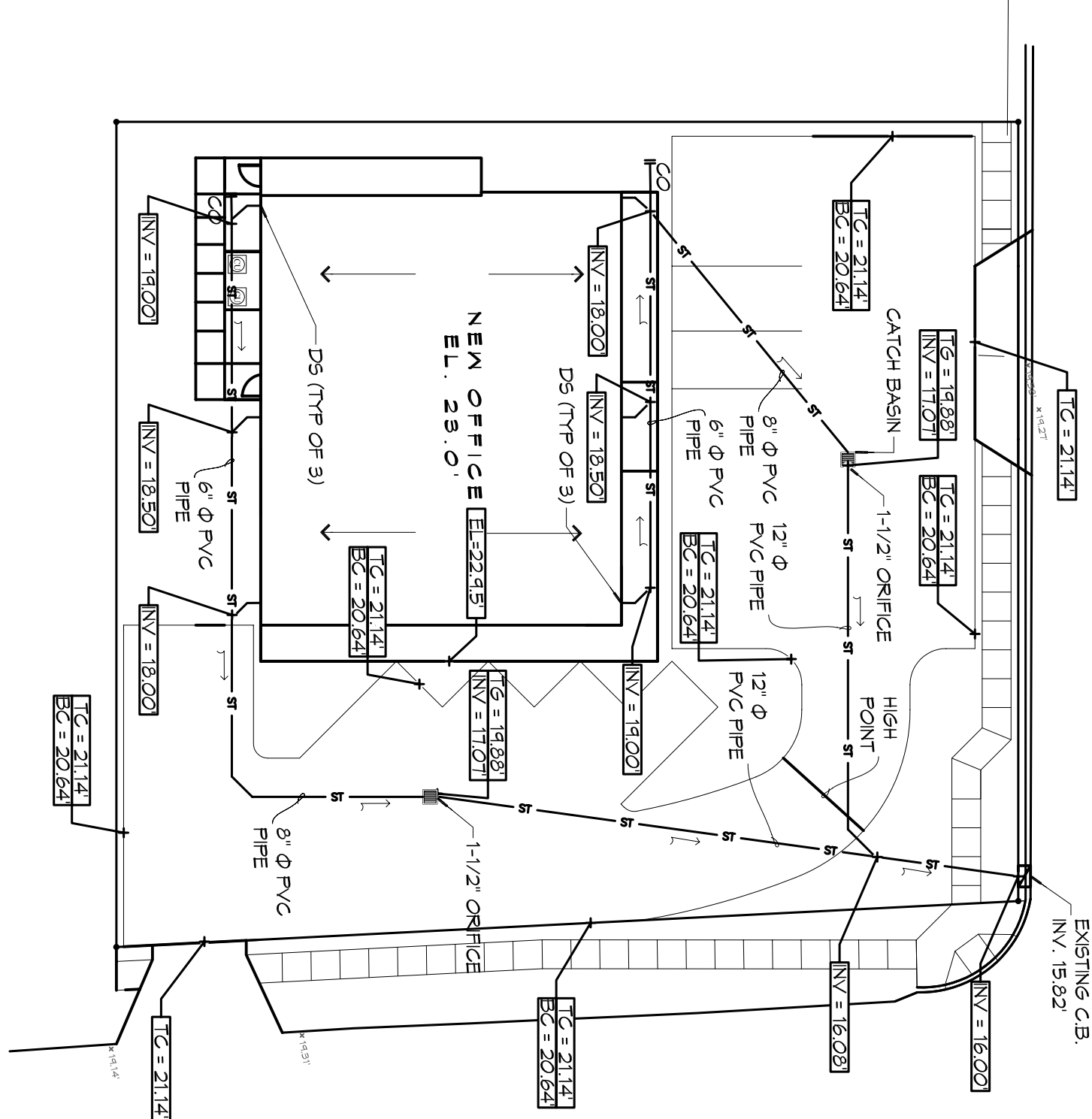
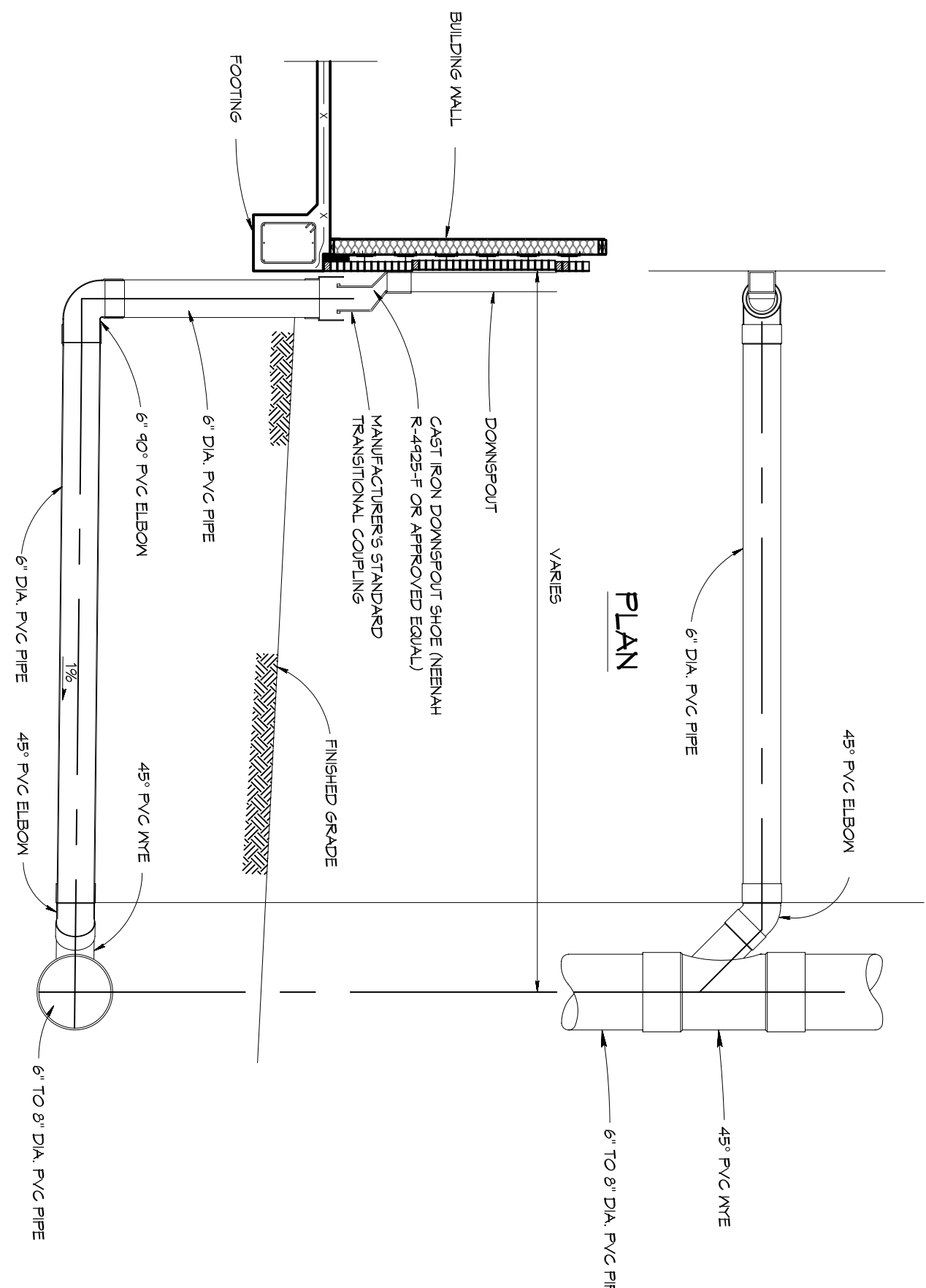
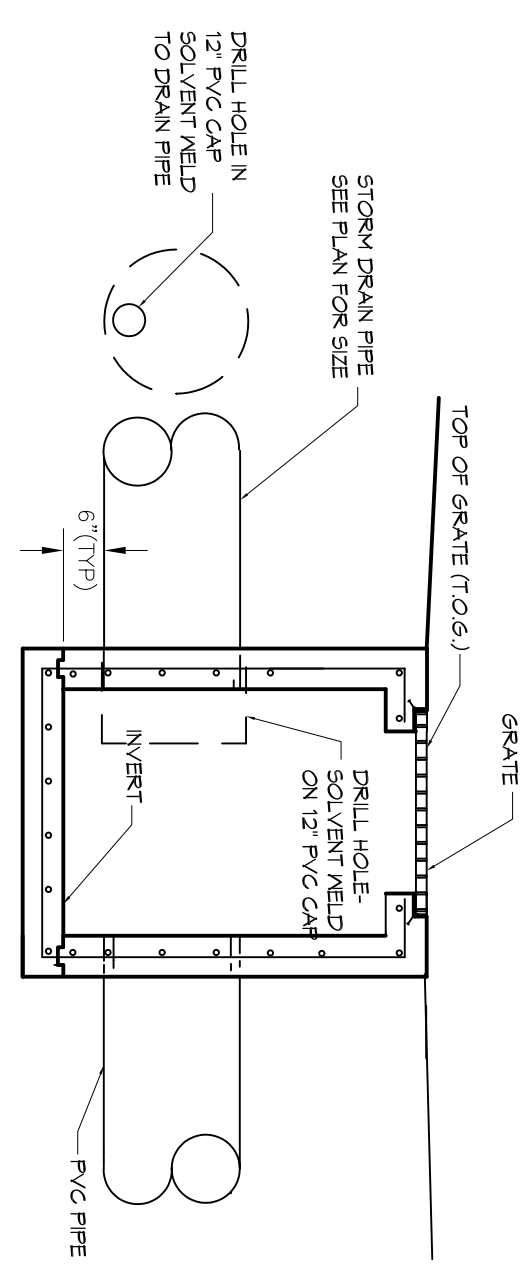
PROJECT: 51818 FARM

DRAINAGE RUN OFF CALCULATIONS -- RATIONAL METHOD

AREA	ROOF DEVELOPMENT	IMPERVIOUS SURFACES	PERCENT IMPERVIOUS	Q (cfs)	INVERT ELEVATION	PIPE SIZE
Q1 = CIA	0.00	0.00	0.00%	0.00	0.00	0.00
Q2 = CIA	0.00	0.00	0.00%	0.00	0.00	0.00
Q3 = CIA	0.00	0.00	0.00%	0.00	0.00	0.00
Q4 = CIA	0.00	0.00	0.00%	0.00	0.00	0.00
Q5 = CIA	0.00	0.00	0.00%	0.00	0.00	0.00
Q6 = CIA	0.00	0.00	0.00%	0.00	0.00	0.00
Q7 = CIA	0.00	0.00	0.00%	0.00	0.00	0.00
Q8 = CIA	0.00	0.00	0.00%	0.00	0.00	0.00
Q9 = CIA	0.00	0.00	0.00%	0.00	0.00	0.00
Q10 = CIA	0.00	0.00	0.00%	0.00	0.00	0.00
Q11 = CIA	0.00	0.00	0.00%	0.00	0.00	0.00
Q12 = CIA	0.00	0.00	0.00%	0.00	0.00	0.00
Q13 = CIA	0.00	0.00	0.00%	0.00	0.00	0.00
Q14 = CIA	0.00	0.00	0.00%	0.00	0.00	0.00
Q15 = CIA	0.00	0.00	0.00%	0.00	0.00	0.00
Q16 = CIA	0.00	0.00	0.00%	0.00	0.00	0.00
Q17 = CIA	0.00	0.00	0.00%	0.00	0.00	0.00
Q18 = CIA	0.00	0.00	0.00%	0.00	0.00	0.00
Q19 = CIA	0.00	0.00	0.00%	0.00	0.00	0.00
Q20 = CIA	0.00	0.00	0.00%	0.00	0.00	0.00
Q21 = CIA	0.00	0.00	0.00%	0.00	0.00	0.00
Q22 = CIA	0.00	0.00	0.00%	0.00	0.00	0.00
Q23 = CIA	0.00	0.00	0.00%	0.00	0.00	0.00
Q24 = CIA	0.00	0.00	0.00%	0.00	0.00	0.00
Q25 = CIA	0.00	0.00	0.00%	0.00	0.00	0.00
Q26 = CIA	0.00	0.00	0.00%	0.00	0.00	0.00
Q27 = CIA	0.00	0.00	0.00%	0.00	0.00	0.00
Q28 = CIA	0.00	0.00	0.00%	0.00	0.00	0.00
Q29 = CIA	0.00	0.00	0.00%	0.00	0.00	0.00
Q30 = CIA	0.00	0.00	0.00%	0.00	0.00	0.00
Q31 = CIA	0.00	0.00	0.00%	0.00	0.00	0.00
Q32 = CIA	0.00	0.00	0.00%	0.00	0.00	0.00
Q33 = CIA	0.00	0.00	0.00%	0.00	0.00	0.00
Q34 = CIA	0.00	0.00	0.00%	0.00	0.00	0.00
Q35 = CIA	0.00	0.00	0.00%	0.00	0.00	0.00
Q36 = CIA	0.00	0.00	0.00%	0.00	0.00	0.00
Q37 = CIA	0.00	0.00	0.00%	0.00	0.00	0.00
Q38 = CIA	0.00	0.00	0.00%	0.00	0.00	0.00
Q39 = CIA	0.00	0.00	0.00%	0.00	0.00	0.00
Q40 = CIA	0.00	0.00	0.00%	0.00	0.00	0.00
Q41 = CIA	0.00	0.00	0.00%	0.00	0.00	0.00
Q42 = CIA	0.00	0.00	0.00%	0.00	0.00	0.00
Q43 = CIA	0.00	0.00	0.00%	0.00	0.00	0.00
Q44 = CIA	0.00	0.00	0.00%	0.00	0.00	0.00
Q45 = CIA	0.00	0.00	0.00%	0.00	0.00	0.00
Q46 = CIA	0.00	0.00	0.00%	0.00	0.00	0.00
Q47 = CIA	0.00	0.00	0.00%	0.00	0.00	0.00
Q48 = CIA	0.00	0.00	0.00%	0.00	0.00	0.00
Q49 = CIA	0.00	0.00	0.00%	0.00	0.00	0.00
Q50 = CIA	0.00	0.00	0.00%	0.00	0.00	0.00
Q51 = CIA	0.00	0.00	0.00%	0.00	0.00	0.00
Q52 = CIA	0.00	0.00	0.00%	0.00	0.00	0.00
Q53 = CIA	0.00	0.00	0.00%	0.00	0.00	0.00
Q54 = CIA	0.00	0.00	0.00%	0.00	0.00	0.00
Q55 = CIA	0.00	0.00	0.00%	0.00	0.00	0.00
Q56 = CIA	0.00	0.00	0.00%	0.00	0.00	0.00
Q57 = CIA	0.00	0.00	0.00%	0.00	0.00	0.00
Q58 = CIA	0.00	0.00	0.00%	0.00	0.00	0.00
Q59 = CIA	0.00	0.00	0.00%	0.00	0.00	0.00
Q60 = CIA	0.00	0.00	0.00%	0.00	0.00	0.00
Q61 = CIA	0.00	0.00	0.00%	0.00	0.00	0.00
Q62 = CIA	0.00	0.00	0.00%	0.00	0.00	0.00
Q63 = CIA	0.00	0.00	0.00%	0.00	0.00	0.00
Q64 = CIA	0.00	0.00	0.00%	0.00	0.00	0.00
Q65 = CIA	0.00	0.00	0.00%	0.00	0.00	0.00
Q66 = CIA	0.00	0.00	0.00%	0.00	0.00	0.00
Q67 = CIA	0.00	0.00	0.00%	0.00	0.00	0.00
Q68 = CIA	0.00	0.00	0.00%	0.00	0.00	0.00
Q69 = CIA	0.00	0.00	0.00%	0.00	0.00	0.00
Q70 = CIA	0.00	0.00	0.00%	0.00	0.00	0.00
Q71 = CIA	0.00	0.00	0.00%	0.00	0.00	0.00
Q72 = CIA	0.00	0.00	0.00%	0.00	0.00	0.00
Q73 = CIA	0.00	0.00	0.00%	0.00	0.00	0.00
Q74 = CIA	0.00	0.00	0.00%	0.00	0.00	0.00
Q75 = CIA	0.00	0.00	0.00%	0.00	0.00	0.00
Q76 = CIA	0.00	0.00	0.00%	0.00	0.00	0.00
Q77 = CIA	0.00	0.00	0.00%	0.00	0.00	0.00
Q78 = CIA	0.00	0.00	0.00%	0.00	0.00	0.00
Q79 = CIA	0.00	0.00	0.00%	0.00	0.00	0.00
Q80 = CIA	0.00	0.00	0.00%	0.00	0.00	0.00
Q81 = CIA	0.00	0.00	0.00%	0.00	0.00	0.00
Q82 = CIA	0.00	0.00	0.00%	0.00	0.00	0.00
Q83 = CIA	0.00	0.00	0.00%	0.00	0.00	0.00
Q84 = CIA	0.00	0.00	0.00%	0.00	0.00	0.00
Q85 = CIA	0.00	0.00	0.00%	0.00	0.00	0.00
Q86 = CIA	0.00	0.00	0.00%	0.00	0.00	0.00
Q87 = CIA	0.00	0.00	0.00%	0.00	0.00	0.00
Q88 = CIA	0.00	0.00	0.00%	0.00	0.00	0.00
Q89 = CIA	0.00	0.00	0.00%	0.00	0.00	0.00
Q90 = CIA	0.00	0.00	0.00%	0.00	0.00	0.00
Q91 = CIA	0.00	0.00	0.00%	0.00	0.00	0.00
Q92 = CIA	0.00	0.00	0.00%	0.00	0.00	0.00
Q93 = CIA	0.00	0.00	0.00%	0.00	0.00	0.00
Q94 = CIA	0.00	0.00	0.00%	0.00	0.00	0.00
Q95 = CIA	0.00	0.00	0.00%	0.00	0.00	0.00
Q96 = CIA	0.00	0.00	0.00%	0.00	0.00	0.00
Q97 = CIA	0.00	0.00	0.00%	0.00	0.00	0.00
Q98 = CIA	0.00	0.00	0.00%	0.00	0.00	0.00
Q99 = CIA	0.00	0.00	0.00%	0.00	0.00	0.00
Q100 = CIA	0.00	0.00	0.00%	0.00	0.00	0.00

2 DETAIL

3 DETAIL



RESULTS

STATION	Q (cfs)	PIPE SIZE	INVERT ELEVATION	PIPE SLOPE
1	0.00	6"	0.00	0.00%
2	0.00	6"	0.00	0.00%
3	0.00	6"	0.00	0.00%
4	0.00	6"	0.00	0.00%
5	0.00	6"	0.00	0.00%
6	0.00	6"	0.00	0.00%
7	0.00	6"	0.00	0.00%
8	0.00	6"	0.00	0.00%
9	0.00	6"	0.00	0.00%
10	0.00	6"	0.00	0.00%
11	0.00	6"	0.00	0.00%
12	0.00	6"	0.00	0.00%
13	0.00	6"	0.00	0.00%
14	0.00	6"	0.00	0.00%
15	0.00	6"	0.00	0.00%
16	0.00	6"	0.00	0.00%
17	0.00	6"	0.00	0.00%
18	0.00	6"	0.00	0.00%
19	0.00	6"	0.00	0.00%
20	0.00	6"	0.00	0.00%
21	0.00	6"	0.00	0.00%
22	0.00	6"	0.00	0.00%
23	0.00	6"	0.00	0.00%
24	0.00	6"	0.00	0.00%
25	0.00	6"	0.00	0.00%
26	0.00	6"	0.00	0.00%
27	0.00	6"	0.00	0.00%
28	0.00	6"	0.00	0.00%
29	0.00	6"	0.00	0.00%
30	0.00	6"	0.00	0.00%
31	0.00	6"	0.00	0.00%
32	0.00	6"	0.00	0.00%
33	0.00	6"	0.00	0.00%
34	0.00	6"	0.00	0.00%
35	0.00	6"	0.00	0.00%
36	0.00	6"	0.00	0.00%
37	0.00	6"	0.00	0.00%
38	0.00	6"	0.00	0.00%
39	0.00	6"	0.00	0.00%
40	0.00	6"	0.00	0.00%
41	0.00	6"	0.00	0.00%
42	0.00	6"	0.00	0.00%
43	0.00	6"	0.00	0.00%
44	0.00	6"	0.00	0.00%
45	0.00	6"	0.00	0.00%
46	0.00	6"	0.00	0.00%
47	0.00	6"	0.00	0.00%
48	0.00	6"	0.00	0.00%
49	0.00	6"	0.00	0.00%
50	0.00	6"	0.00	0.00%
51	0.00	6"	0.00	0.00%
52	0.00	6"	0.00	0.00%
53	0.00	6"	0.00	0.00%
54	0.00	6"	0.00	0.00%
55	0.00	6"	0.00	0.00%
56	0.00	6"	0.00	0.00%
57	0.00	6"	0.00	0.00%
58	0.00	6"	0.00	0.00%
59	0.00	6"	0.00	0.00%
60	0.00	6"	0.00	0.00%
61	0.00	6"	0.00	0.00%
62	0.00	6"	0.00	0.00%
63	0.00	6"	0.00	0.00%
64	0.00	6"	0.00	0.00%
65	0.00	6"	0.00	0.00%
66	0.00	6"	0.00	0.00%
67				