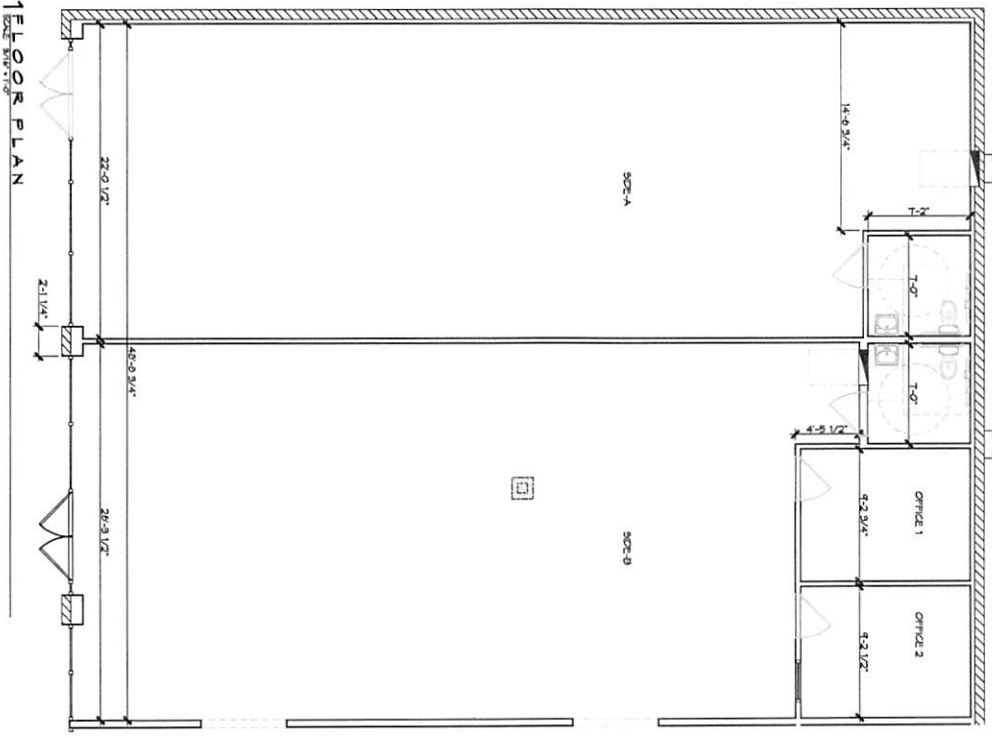


Can the wall bft office 1+2 move to the Right. That would make Office 2 slightly smaller + office 1 remains same size if it would line up with the outside of bottom column. Would that give enough Room for a back door?



DAMMON
ENGINEERING INC.
LOUISIANA & MISSISSIPPI

Chief Engineer: Brian Smith, PE
554 Old Spanish Trail
Bossier, LA 70604

www.dammonengineering.com
info@dammonengineering.com
PH: 862.444.5823

NO.	DESCRIPTION	DATE

RENOVATION
**ACTION PHYSICAL
THERAPY &
SPORTS MEDICINE**

1071 SOUTH MILITARY RD.
BOSSIER, LA 70601

JOB No: 2481 DATE: 11-09-2022
DRAWN BY: TMT CHECKED BY: JMS

PROJECT No: **A101**