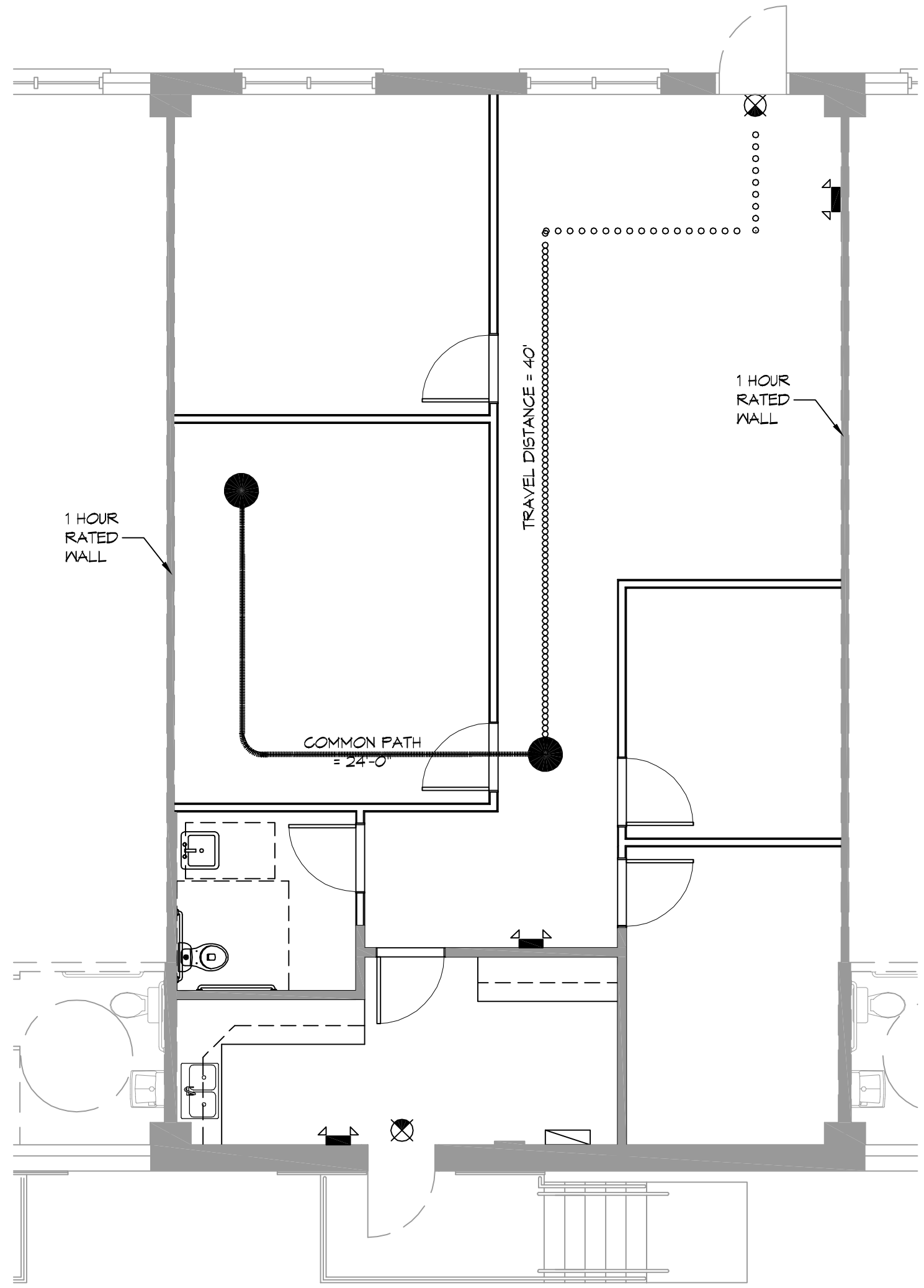


LIFE-SAFETY INFORMATION	
APPLICABLE CODES	
NFPA 101 LIFE-SAFETY CODE 2012	
OCCUPANCY TYPE(S) AND CHAPTER(S)	
BUSINESS (CHAPTER 38)	
MULTIPLE, MIXED, OR SEPARATE OCCUPANCY (REFERENCE CHAPTER 6)	
N/A	
OCCUPANT LOAD FACTOR (REFERENCE TABLE 7.3.1.2)	
1,500 SF / 100 SF PER OCCUPANT = 16 OCCUPANTS	
CLASSIFICATION OF HAZARD OF CONTENTS	
(REFERENCE: OCCUPANCY CHAPTER AND 6.2.2; SPECIFY LOW, ORDINARY, OR HIGH)	
CONSTRUCTION TYPE(S) (REFERENCE: CHAPTER 8, TABLE A.8.2.1.2 AND COMMENTARY TABLE B.1 IN HANDBOOK)	
(1000)	
MINIMUM EXIT SEPARATION DISTANCE FOR REMOTELY LOCATED EXITS	
(REFERENCE: SECTION 7.5; SPECIFY 1/2 OR 1/3 DIAGONAL DISTANCE OF AREA SERVED)	
1/3 DIAGONAL = 24'-10"	
MAXIMUM DEAD-END CORRIDORS (REFERENCE: OCCUPANCY CHAPTER AND TABLE A.7.6)	
50'	
MAXIMUM COMMON PATH OF TRAVEL DISTANCE (REFERENCE: OCCUPANCY CHAPTER AND TABLE A.7.6)	
100'	
MAXIMUM TRAVEL DISTANCE TO EXITS (REFERENCE: OCCUPANCY CHAPTER AND TABLE A.7.6)	
300'	
MAIN ENTRANCE MUST BE SIGNED TO ACCOMMODATE 1/2 OCCUPANT LOAD OF BUILDING	
EXTINGUISHMENT REQUIREMENTS	
SPRINKLERED	
DETECTION, ALARM, AND COMMUNICATION SYSTEMS	
NO	
ALLOWABLE HEIGHT AND BUILDING AREA PER IBC EQUIVALENT CONSTRUCTION TYPE	

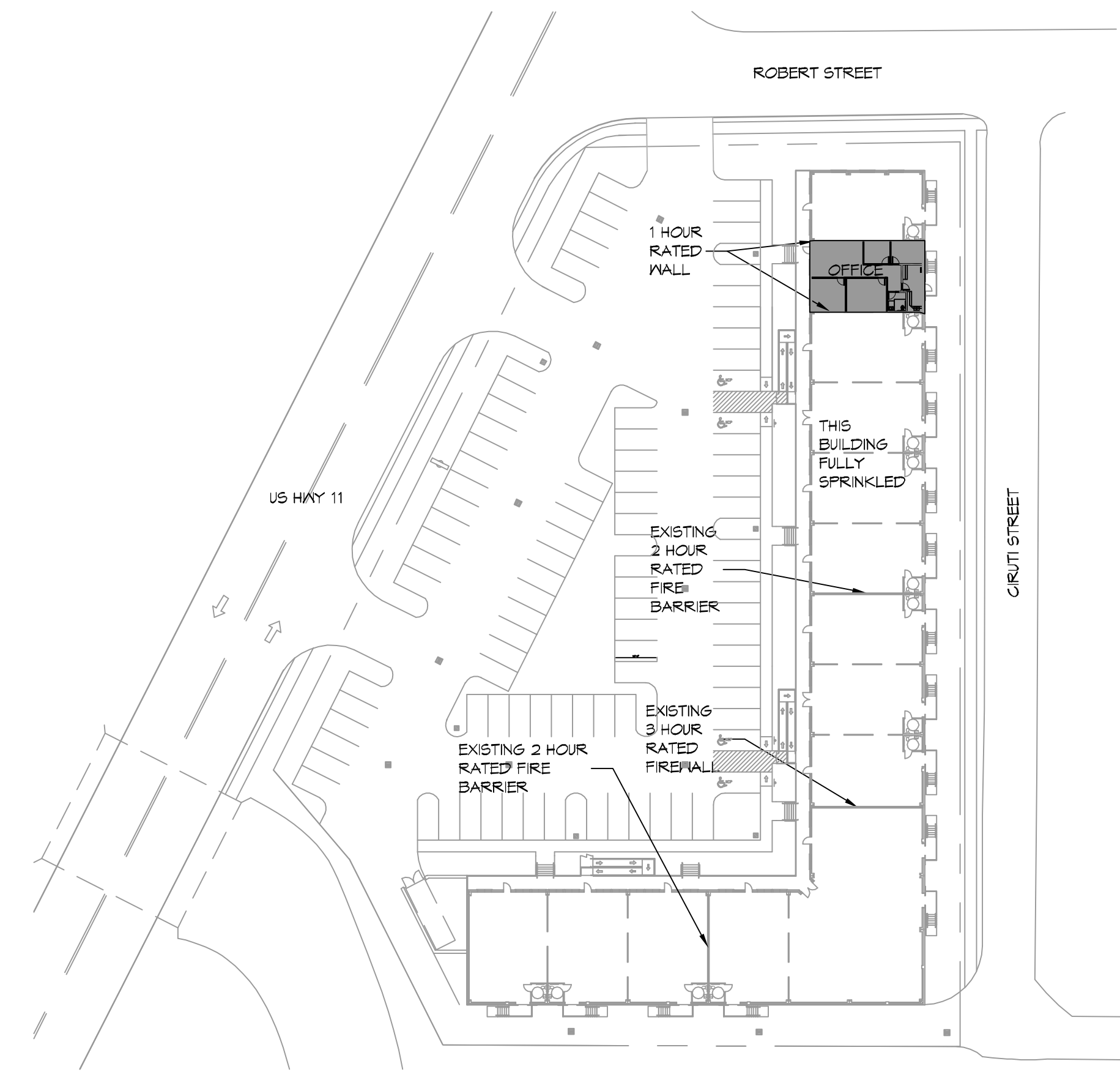
BUILDING CODE INFORMATION	
APPLICABLE CODES	
IBC 2012	
BUSINESS GROUP B (IBC 2012 CHAPTER 13)	
OCCUPANT LOAD CALCULATIONS (TABLE 1004.1.1)	
BUSINESS = 1,500 SQ FT 100 SF PER OCCUPANT (GROSS) 16 OCCUPANTS	
CONSTRUCTION TYPE(S) (TABLE 503)	
VB (SECTION 503)	
ALLOWABLE HEIGHT AND BUILDING AREA LIMITED BY TYPE OF CONSTRUCTION	
MAXIMUM HEIGHT IN STORES (SECTION 503 & 504, TABLE 503)	
3	
MAXIMUM AREA IN SQUARE FEET (SECTION 503, 506 & 507, TABLE 503)	
18,000	

WIND SPEED DESIGN REQUIREMENTS	
THIS BUILDING SHALL BE DESIGNED WITH IBC SEC 1609 AS A FULLY ENCLOSED BLDG USING THE FOLLOWING INFORMATION:	
WIND DESIGN DATA:	
DETERMINATION OF WIND LOADS SHALL BE IN ACCORDANCE WITH IBC SEC 1609.3 (1), (2), OR (3) DEPENDING ON THE RISK CATEGORY	
WIND SPEED V_{ult} (3 SECOND GUST) =	131 MPH (IBC FIG 1609.3(1))
NOMINAL DESIGN WIND SPEED V_{std} =	102 MPH ($V_{ult} \times (0.6)^{1/2}$)
RISK CATEGORY:	CATEGORY II BLDG
TOPOGRAPHIC FACTOR =	1
DESIGN WIND PRESSURE (ASCE 7-10 TABLE 28.6-1):	37.1 PSF
INTERNAL PRESSURE COEFFICIENT (ASCE 7-10 TABLE 26.11-1):	+ 0.18
LIVE LOADS (IBC SEC 1607)	
OFFICE LOBBIES & CORRIDORS 1ST FLOOR (IBC TABLE 1607.1):	100 PSF
OFFICES (IBC TABLE 1607.1):	50 PSF
ROOF LIVE LOADS (IBC TABLE 1607.1):	20 PSF UNIFORM, 300 LB CONCENTRATED
SNOW LOADS (IBC SEC 1608):	
GROUND SNOW LOAD (IBC FIG 1608.2):	5 PSF

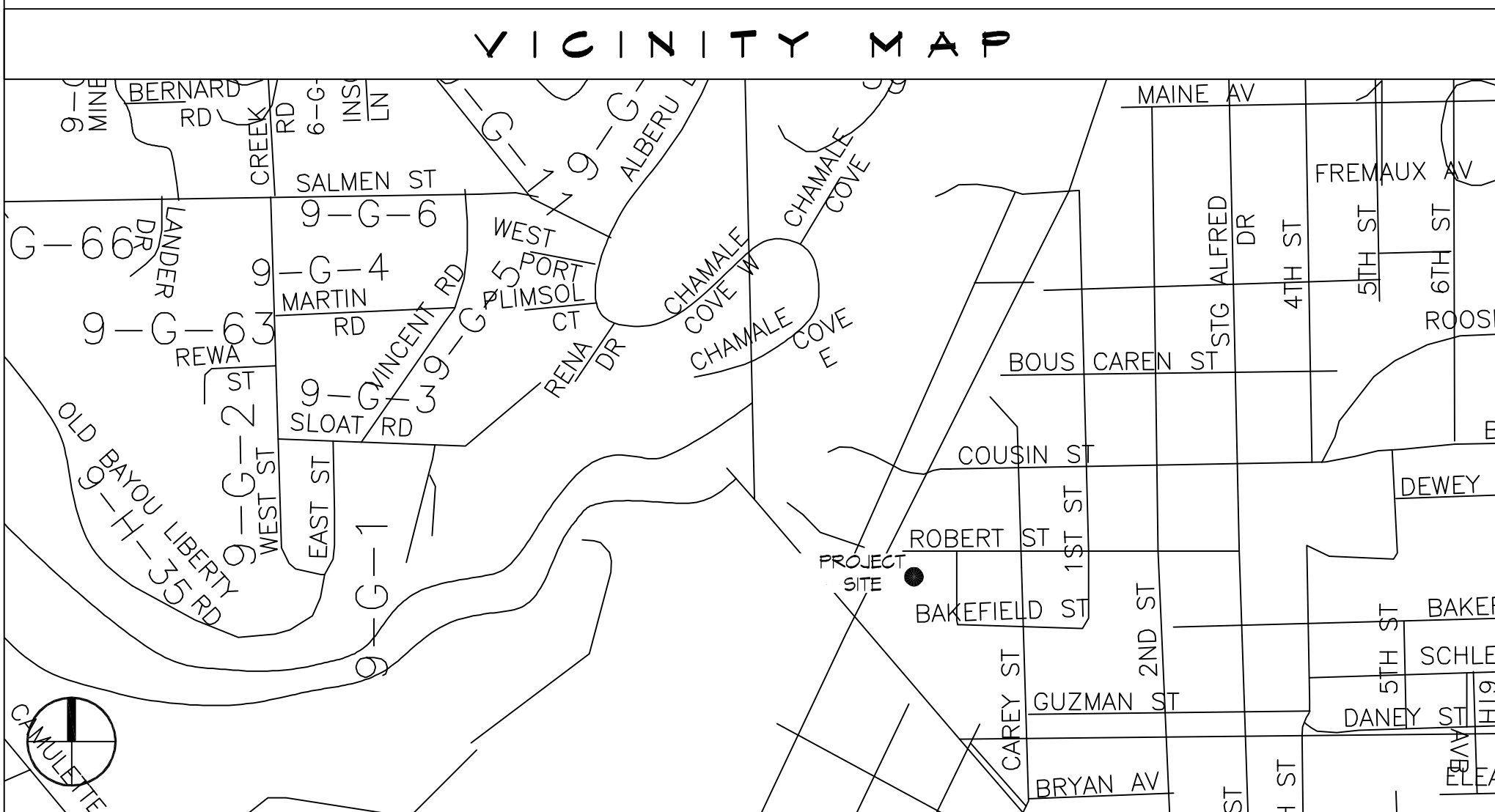
LIFE-SAFETY LEGEND	
SYMBOL	DESCRIPTION
	EXITS
	DOOR FIRE RATING (MINUTES)
	DOOR WIDTH/EGRESS CAPACITY
	EXIT LIGHT
	FIRE EXTINGUISHER IV WALL MTD BRACKET
	COMMON PATH OF TRAVEL
	TRAVEL DISTANCE
	DESIGN POINT



LIFE-SAFETY PLAN
SCALE: 1/8" = 1'-0"



SITE PLAN
SCALE: 1" = 50'-0"



VICINITY MAP

SHEET INDEX	
SHEET #	SHEET TITLE
G101	GENERAL INFORMATION SHEET
G102	ACCESSIBILITY INFORMATION
A101	FLOOR PLAN
M/P 101	MECHANICAL FLOOR PLAN, SCHEDULES & DETAILS
E101	POWER AND LIGHTING PLAN

- | GENERAL NOTES | |
|---------------|---|
| 1. | ALL MATERIALS AND WORK, INCIDENTAL TO THE CONSTRUCTION OF THIS PROJECT, SHALL CONFORM TO ALL GOVERNING CODES, AND REGULATIONS OF AGENCIES IN AUTHORITY. |
| 2. | CONTRACTOR SHALL PROVIDE ALL PUBLIC PROTECTIONS NECESSARY AS REQUIRED BY LAW. |
| 3. | THE DRAWINGS AND ANY SUBSEQUENTLY ISSUED ADDENDA, AMENDMENTS OR SUCH CHANGE ORDERS APPROVED BY THE OWNER AND THE CONTRACTOR ARE PART OF THESE CONTRACT DOCUMENTS. |
| 4. | DO NOT SCALE DRAWINGS. CONSULT WITH THE ENGINEER REGARDING ANY ITEMS IN THE CONTRACT DOCUMENTS THAT REQUIRE CLARIFICATION. |
| 5. | TRASH SHALL BE REMOVED FROM THE SITE NOT LESS THAN TWICE MONTHLY. |
| 6. | THE GENERAL CONTRACTOR SHALL VERIFY EXISTING CONDITIONS PRIOR TO COMMENCING WORK AND REPORT ANY AND ALL DISCREPANCIES TO THE ARCHITECT. |
| 7. | CONTRACTOR VEHICLES AND EQUIPMENT NECESSARY FOR CONSTRUCTION MAY BE PARKED ON THE SITE. OTHER VEHICLES PARKED ON THE SITE REQUIRE THE OWNER'S PERMISSION. |
| 8. | ALL MATERIALS/EQUIPMENT SHALL BE INSTALLED PER MANUFACTURER'S RECOMMENDATIONS. WORK NOT CONSISTENT WITH MANUFACTURER'S RECOMMENDATIONS WILL BE REJECTED BY OWNER/ARCHITECT. |

DAMMON ENGINEERING, INC.
LOUISIANA & MISSISSIPPI

www.dammonengineering.com
info@dammonengineering.com
PH: 985.649.3832

Chief Engineer: Brian Mestich, PE
554 Old Spanish Trail
Bossier, LA 70608

REVISIONS	DATE
#	DESCRIPTION

SEAL:

NEW OFFICE

EDWARD JONES

2306 FRONT STREET
SUITE 3
SLIDELL, LA

JMS
DATE: 06-24-2018
CHECKED BY: GCD
DRAWN BY: JMS

SHEET TITLE:
GENERAL INFORMATION SHEET

DRAWING NUMBER:
G101

SHEET No: 1 of 5

