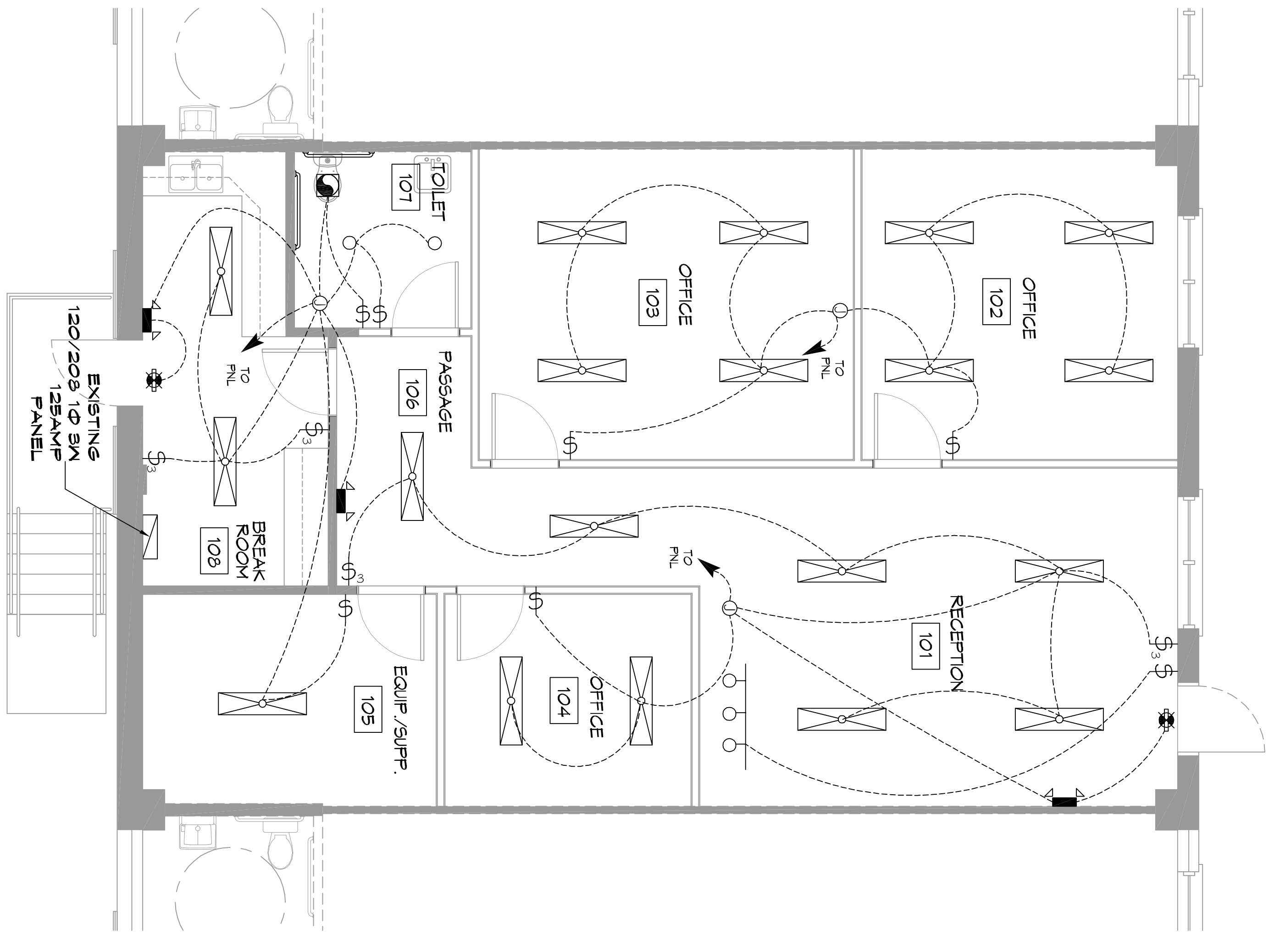
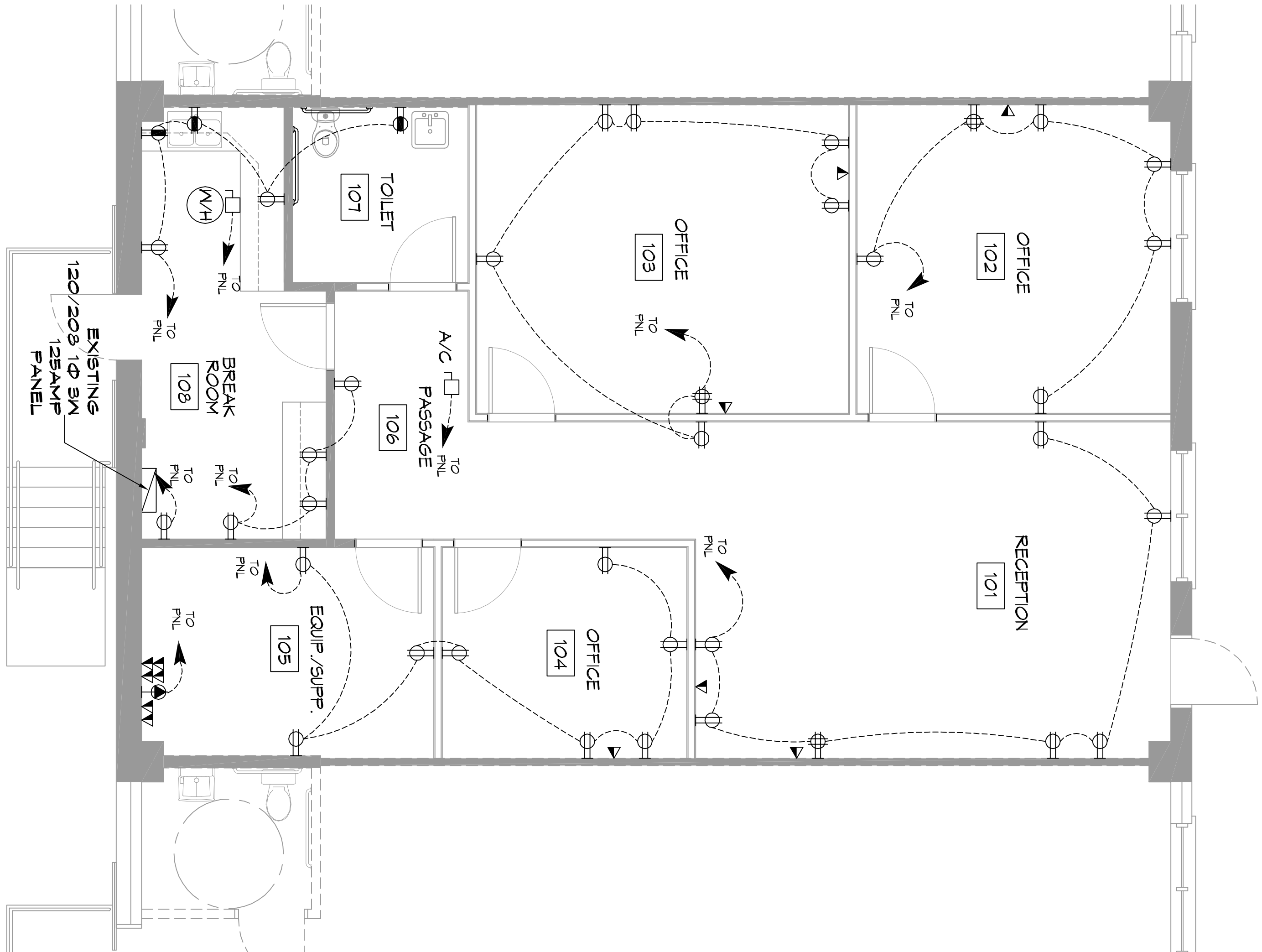


SYMS DESCRIPTION	LEGEND
EMERGENCY LIGHT FIXTURE (2x)	ELECTRIC PANEL BOARD
EXIT LIGHT FIXTURE - WALL MOUNTED (10x)	CIRCUIT HOME RUN
1x4 FLUORESCENT OR LED LIGHTING, 3 LAMPS PER FIXTURE, 2850 LUMENS PER LAMP	LIGHT SWITCH - 120V COMMERCIAL GRADE
	LIGHT SWITCH - 3-WAY 120V COMMERCIAL GRADE
	EXHAUST FAN SEE MECH.
	EXHAUST FAN - SEE MECH.
	DATA CONNECTION

SYMS DESCRIPTION	LEGEND
STANDARD 120V DUPLEX RECEPTACLE (NEUMA 5-2 OR 18' AFF) (UNLESS OTHERWISE NOTED)	
6FO DUPLEX RECEPTACLE	
STANDARD QUAD RECEPTACLE	
JUNCTION BOX	
RIGID DISCONNECT	
EXHAUST FAN - SEE MECH.	
DATA CONNECTION	

- ### GENERAL NOTES
- ALL WORK SHALL CONFORM TO THE LATEST EDITION OF THE NATIONAL ELECTRICAL CODE, THE GOVERNING ELECTRICAL CODE AND ALL OTHER APPLICABLE CODES. THE ELECTRICAL CONTRACTOR SHALL VERIFY ALL APPLICABLE CODES AND REQUIREMENTS WITH THE ARCHITECT AND THE CITY OF MONROE.
  - ALL MATERIALS FURNISHED SHALL BE NEW AND SHALL BE LISTED.
  - THE DRAWINGS INDICATE SIZE AND GENERAL LOCATION OF WORK. SCALE DIMENSIONS SHALL NOT BE USED. THE EXACT LOCATION OF ALL LIGHTING FIXTURES, RECEPTACLES AND TELEPHONE OUTLETS, ETC. SHALL BE DETERMINED BY ACTUAL CONDITIONS IN THE FIELD.
  - PRIOR TO BIDDING, CONTRACTOR SHALL VISIT THE JOB SITE AND FAMILIARIZE HIMSELF WITH THE EXISTING CONDITIONS.
  - ELECTRICAL CONTRACTOR SHALL COORDINATE HIS WORK WITH OTHER TRADES AND WITH OTHER CONTRACTORS WHOSE WORK MAY AFFECT THIS INSTALLATION.
  - ELECTRICAL CONTRACTOR SHALL COORDINATE NEARING ELECTRICAL WORK WITH THE ARCHITECT AND INCLUDE IN HIS BID ALL CHARGES AND FEES INCURRED IN MODIFICATIONS.
  - ELECTRICAL CONTRACTOR SHALL COORDINATE THE TELEPHONE INSTALLATION WITH THE TELEPHONE COMPANY AND THE GENERAL CONTRACTOR.
  - ELECTRICAL CONTRACTOR, BEFORE INSTALLING ANY OF THE WORK, SHALL SEE THAT IT DOES NOT INTERFERE WITH CLEARANCES REQUIRED FOR FINISHED CEILING, HUNG CEILING, PLASTER PARTITIONS, WALLS, ETC. AS SHOWN IN THE ARCHITECTURAL DRAWINGS AND DETAILS. IF ANY WORK IS INSTALLED AND IT INTERFERES WITH SUCH DETAILS OR DESIGN CANNOT BE FOLLOWED, THE CONTRACTOR AT HIS OWN EXPENSE SHALL MAKE SUCH CHANGES IN THE INSTALLATION OF THE ELECTRICAL WORK AS TO BE IN ACCORDANCE WITH THE ARCHITECTURAL WORK AS SHOWN ON THE PLANS AND DETAILS.
  - PERFORM TEST REQUIRED BY THE OWNER OR THE ENGINEER IN CONNECTION WITH THE OPERATION OF THE ELECTRICAL SYSTEM IN THE BUILDING. ALL TESTS SHALL BE MADE IN ACCORDANCE WITH THE LATEST STANDARD OF THE IEEE AND THE NATIONAL ELECTRICAL CODE.
  - MINIMUM CONDUCTOR SIZE SHALL BE #12, 600V INSULATION MINIMUM SIZE CONDUIT SHALL BE 3/4" ELECTRICAL METALLIC TUBING (EMT) FOR INTERIOR USE, 1/2" RIGID ALUMINUM FOR EXTERIOR USE ABOVE GRADE AND 1" SCHEDULE 40 PIPE BARED A MINIMUM OF 18" FOR NON-FRICKER TRAFFIC AREAS. FOR CONDUITS BEYOND A WALL, CONDUIT SHALL BE 1 1/2" RIGID PVC OR 2" RIGID HDPE CONDUIT WITH 1/2" MINIMUM BEND RADIUS. ALL CONDUITS SHALL BE INSTALLED IN ACCORDANCE WITH THE NATIONAL ELECTRICAL CODE.
  - CONTRACTOR SHALL INSTALL WIRING AND OTHER CIRCUIT COMPONENTS TO MATCH EQUIPMENT ACTUALLY INSTALLED.
  - ALL 120V RINGS LONGER THAN 60 FEET SHALL BE #10 AWG AND 277V RINGS LONGER THAN 150 FEET SHALL BE #10 AWG UNLESS NOTED OTHERWISE.
  - INSTALL GROUND FAULT RECEPTACLES AT RECEPTACLE LOCATIONS WITHIN 5' OF SINKS OR LAVATORIES AND AT EXTERIOR LOCATIONS. EXTERIOR RECEPTACLES SHALL ALSO BE WATERPROOF. ALL RECEPTACLES IN A KITCHEN AREA SHALL HAVE GROUND FAULT PROTECTION.
  - BONDING AND GROUNDING SHALL BE IN ACCORDANCE WITH NFPA 70:250-69; NFPA 250-25; 250-71 & 250-72.
  - GROUND NEUTRAL IN ACCORDANCE WITH NFPA 70:250-238.
  - FUSES SHALL BE TTT CLASS K5, 250 VOLT, 200,000 AMP INTERRUPTING CAP. PROVIDE SERVICES OF A FIRE/SMOKE DETECTION AND ALARM COMPANY TO DESIGN AND INSTALL ALARM SYSTEM TO MEET REQUIREMENTS OF THE STATE FIRE MARSHALL AND THE FIRE DISTRICT.
  - EXTERIOR LIGHTING SHALL BE SHAWD OR INWARDLY DIRECTED IN SUCH A MANNER SO THAT NO DIRECT LIGHTING OR GLARE IS CAST BEYOND THE FOOTCANDLE OF THE INSTALLED LIGHTING SHALL NOT EXCEED ONE FOOT CANDLE AT THE RECEPTACLE LOCATION.
  - ALL ELECTRICAL WIRING SHALL BE INSTALLED IN ACCORDANCE WITH THE NATIONAL ELECTRICAL CODE AND THE NATIONAL FIRE PROTECTION ASSOCIATION (NFPA) 70:310-10. ALL ELECTRICAL WIRING SHALL BE INSTALLED IN ACCORDANCE WITH THE NATIONAL ELECTRICAL CODE AND THE NATIONAL FIRE PROTECTION ASSOCIATION (NFPA) 70:310-10. ALL ELECTRICAL WIRING SHALL BE INSTALLED IN ACCORDANCE WITH THE NATIONAL ELECTRICAL CODE AND THE NATIONAL FIRE PROTECTION ASSOCIATION (NFPA) 70:310-10.
  - VERIFY ELECTRICAL CONNECTIONS PER MANUFACTURERS RECOMMENDATIONS.



### GENERAL NOTES LIGHTING

- ALL WORK SHALL CONFORM WITH APPLICABLE NATIONAL, STATE, AND SERVICE UTILITY COMPANY REGULATIONS, AND REQUIREMENTS OF THE GENERAL CONTRACTOR SHALL NOTIFY THE ARCHITECT IMMEDIATELY IF ANY CONFLICTS OCCUR BETWEEN LIGHTING AND ANY OTHER TRADE DO NOT PROCEED WITH INSTALLATION IN THAT AREA UNTIL CONFLICT HAS BEEN RESOLVED TO THE SATISFACTION OF THE ARCHITECT AND ENGINEER.
- REFER TO ARCHITECTURAL DRAWINGS FOR EXACT LOCATION AND MOUNTING INSTRUCTIONS FOR ALL LIGHT FIXTURES. NOTIFY THE ARCHITECT AND ENGINEER OF ANY DISCREPANCIES BETWEEN THESE PLANS AND THE ARCHITECTURAL PLANS RELATING TO QUANTITY, TYPE AND LOCATION OF DEVICES AND/OR FIXTURES.
- WHERE LIGHT FIXTURES HAVE BEEN SPECIFIED IN THE DRAWING, THE ELECTRICAL CONTRACTOR SHALL BE RESPONSIBLE FOR THE PROPER ASSEMBLY, INCLUDING ALL PARTS AND HARDWARE TO INSURE PROPER FUNCTIONING FIXTURE.
- ALL CONDUCTORS SHALL BE A MINIMUM OF #12 AWG UNLESS NOTED OTHERWISE.
- ALL 120V RINGS LONGER THAN 60 FEET SHALL BE #10 AWG AND 277V RINGS LONGER THAN 150 FEET SHALL BE #10 AWG UNLESS NOTED OTHERWISE.
- ALL CONDUCTORS SHALL BE COPPER.
- WHERE CONDUCTOR SIZES ARE NOTED ON DRAWINGS, THAT WIRE SIZE SHALL BE THROUGH THE ENTIRE RUN UNLESS OTHERWISE NOTED.
- MOUNTED LIGHT SWITCHES 48" AFF UNLESS NOTED OTHERWISE ON ARCHITECTURAL DRAWINGS.
- WHERE MORE THAN ONE SWITCH OCCURS IN THE SAME LOCATION, THEY SHALL BE INSTALLED IN A GANG TYPE BOX UNDER ONE COVER PLATE. EACH GANGED SWITCH SHALL HAVE A COMMON SEWABLES FACEPLATE. EACH MULTIGANGED BOX SHALL BE NO MORE THAN SIX (6) SWITCHES WIDE. WHERE MORE THAN SIX (6) SWITCHES ARE SHOWN, STAGGERED VERTICALLY AND THE WIDTH OF THE MULTIGANGED BOX SHALL BE AS EVEN AS POSSIBLE.
- EACH DIMMER SWITCH SHALL HAVE A WATTAGE RATING 25% HIGHER THAN THE TOTAL WATTAGE OF ALL LIGHTS TO BE CONTROLLED BY THE DIMMER. DIMMER SIZES 600, 1000, 1500, AND 2000 WATTS. LUTRON NOVA 1-STAR. WHERE SWITCHES ARE GANGED WITH DIMMERS, THE SWITCH SHALL ALSO BE LUTRON NOVA 1-STAR. FLUORESCENT AND LOW VOLTAGE DIMMERS SHALL BE LUTRON NOVA 1-STAR.
- WHERE FLUORESCENT FIXTURES ARE SHOWN TO BE DIMMED, THE FIXTURES SHALL HAVE DIMMING TYPE BALLASTS WHICH ARE COMPATIBLE WITH THE SPECIFIED DIMMERS.
- WHERE LED FIXTURES/LAMPS ARE SHOWN TO BE DIMMED, THE DIMMER SHALL BE DIMMABLE WITH THE FIXTURE/LAMP SPECIFIED OR PROVIDED.
- ALL EMERGENCY EXIT LIGHT FIXTURES SHALL HAVE 90 MINUTE BATTERY BACKUP WITH INTEGRAL TEST BUTTON AND SHALL BURN CONTINUOUSLY.
- ALL FLUORESCENT FIXTURES THAT UTILIZE DOUBLE-ENDED LAMPS AND CONTAIN BALLASTS SHALL BE PROVIDED WITH A DISCONNECTING MEANS IN ACCORDANCE WITH NEC 410.73C.

REVISIONS		DATE
#	DESCRIPTION	

# DAMMON

## ENGINEERING, INC.

LOUISIANA & MISSISSIPPI

Chief Engineer: Brian Mstch, PE  
554 Old Spanish Trail  
Slidell, LA 70458

www.dammonengineering.com  
info@dammonengineering.com  
PH: 985.649.5832



**EDWARD LOZES**

2306 FRONT STREET  
SUITE 3  
SLIDELL, LA

JOB NO: 2385 DATE: 06-24-2019

DRAWN BY: CD CHECKED BY: BAM

DRAWING NUMBER:  
**E101**

SHEET NO.: 5 OF 5

10 FLOOR PLAN - POWER  
SCALE: 3/16"=1'-0"

11 FLOOR PLAN - LIGHTING  
SCALE: 3/16"=1'-0"