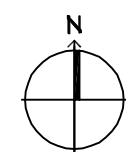
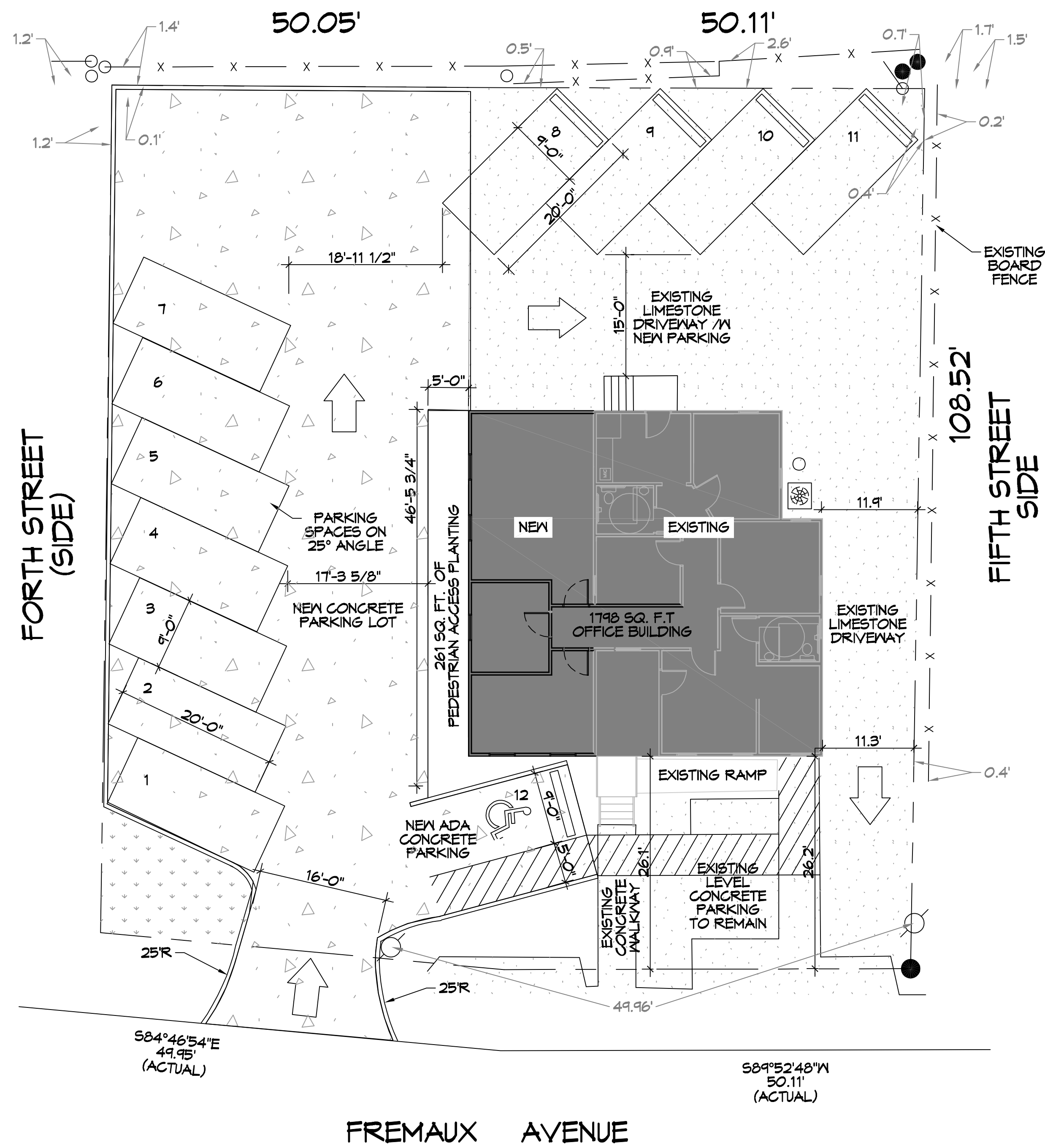


FILE NAME: J:\Projects\10-06-21\10-06-21\_Site Plan.dwg DATE: 10/06/21 11:05:15 AM



**1 SITE PLAN**  
SCALE: 1" = 10'-0"

<b>PLANNING</b>
ZONED: G-2 COMMERCIAL DISTRICT
<b>FLOOD ZONE</b>
ZONE "AE"
<b>BUILDING ELEVATION</b>
BASE FLOOD ELEVATION "AE" = 11.0' FINISHED FLOOR ELEVATION = 8.0'
<b>PARKING</b>
BUSINESS AND PROFESSIONAL OFFICES 1 SPACE FOR EACH 200 SQUARE FEET OF GROSS FLOOR AREA. 1798 / 200 = 9 PARKING REQUIRED = 9 ACTUAL PROVIDED = 12
<b>SITE LIGHTING</b>
EXTERIOR LIGHTING SHALL BE SHADED OR INWARDLY DIRECTED IN SUCH A MANNER SO THAT NO DIRECT LIGHTING OR GLARE BE CAST BEYOND THE PROPERTY LINE. THE INTENSITY OF SUCH LIGHTING SHALL NOT EXCEED ONE FOOT CANDLE AS MEASURED AT THE ADJUTING PROPERTY LINE.

**DAMMON ENGINEERING, INC.**  
LOUISIANA & MISSISSIPPI  
www.dammonengineering.com  
info@dammonengineering.com  
554 Old Spanish Trail  
Slidell, LA 70458  
PH: 985.649.9832

#	DESCRIPTION	DATE
1		

SEAL:

**FLEUR DE LIS  
FIT COMPANY**  
442 FREMAUX AVE  
SLIDELL, LA 70458  
JOB No: 10-06-21  
DATE: 10-06-21  
DRAWN BY: C&D  
CHECKED BY: JMS

SHEET TITLE:  
SITE PLAN

DRAWING NUMBER:  
**C101**