

LIFE-SAFETY INFORMATION

APPLICABLE CODES	
NFPA 101 LIFE-SAFETY CODE 2015	
OCCUPANCY TYPE(S) AND CHAPTER(S)	
BUSINESS (CHAPTER 38)	
MULTIPLE, MIXED, OR SEPARATE OCCUPANCY (REFERENCE CHAPTER 6)	
N/A	
OCCUPANT LOAD FACTOR (REFERENCE TABLE 7.3.1.2)	
2,335 SF / 100 SF PER OCCUPANT = 24 OCCUPANTS	
CLASSIFICATION OF HAZARD OF CONTENTS	
(REFERENCE: OCCUPANCY CHAPTER AND 6.2.2: SPECIFY LOW, ORDINARY, OR HIGH)	
CONSTRUCTION TYPE(S) (REFERENCE: CHAPTERS, TABLE A.9.2.1.2 AND COMMENTARY TABLE 8.1 IN HANDBOOK)	
TYPE II B	
MINIMUM EXIT SEPARATION DISTANCE FOR REMOTELY LOCATED EXITS	
(REFERENCE: SECTION 7.5; SPECIFY 1/2 OR 1/3 DIAGONAL DISTANCE OF AREA SERVED)	
1/3 DIAGONAL = 24'-10"	
MAXIMUM DEAD-END CORRIDORS (REFERENCE: OCCUPANCY CHAPTER AND TABLE A.7.6)	
50'	
MAXIMUM COMMON PATH OF TRAVEL DISTANCE (REFERENCE: OCCUPANCY CHAPTER AND TABLE A.7.6)	
100'	
MAXIMUM TRAVEL DISTANCE TO EXITS (REFERENCE: OCCUPANCY CHAPTER AND TABLE A.7.6)	
300'	
*MAIN ENTRANCE MUST BE SIGNED TO ACCOMMODATE 1/2 OCCUPANT LOAD OF BUILDING	
EXTINGUISHMENT REQUIREMENTS	NON SPRINKLERED
DETECTION, ALARM, AND COMMUNICATION SYSTEMS	YES, FIRE ALARM
ALLOWABLE HEIGHT AND BUILDING AREA	PER IBC EQUIVALENT CONSTRUCTION TYPE

BUILDING CODE INFORMATION

APPLICABLE CODES	
IBC 2015	
BUSINESS GROUP B (IBC 2012 CHAPTER 13)	
OCCUPANT LOAD CALCULATIONS (TABLE 1004.1.1)	
BUSINESS = 2,335 SQ FT 100 SF PER OCCUPANT (GROSS) 24 OCCUPANTS	
CONSTRUCTION TYPE(S) (TABLE 504)	
II B (SECTION 603 AND TABLE 601)	
ALLOWABLE HEIGHT AND BUILDING AREA LIMITED BY TYPE OF CONSTRUCTION	
MAXIMUM HEIGHT IN STORIES (SECTION 504.4) 2	
MAXIMUM AREA IN SQUARE FEET (SECTION 503, 506 & 507, TABLE 503) 9,000	

WIND SPEED DESIGN REQUIREMENTS

THIS BUILDING SHALL BE DESIGNED WITH IBC SEC 1604 AS A FULLY ENCLOSED BLDG USING THE FOLLOWING INFORMATION:

WIND DESIGN DATA:

DETERMINATION OF WIND LOADS SHALL BE IN ACCORDANCE WITH IBC SEC 1609.3 (1), (2), OR (3) DEPENDING ON THE RISK CATEGORY			
WIND SPEED Vult (3 SECOND GUST) =	142 MPH (IBC FIG 1609.3(1))		
NOMINAL DESIGN WIND SPEED Vasd =	110 MPH (Vult x (0.6) ^{1/2})		
RISK CATEGORY:	CATEGORY II BLDG	SURFACE ROUGHNESS =	B
TOPOGRAPHIC FACTOR =	1	EXPOSURE =	B
COMPONENTS AND CLADDING PRESSURE (ASCE 7-10 TABLE 28.6-1):	31.7 PSF		
INTERNAL PRESSURE COEFFICIENT (ASCE 7-10 TABLE 28.11-1):	± 0.18		
LIVE LOADS (IBC SEC 1607)			
OFFICE LOBBIES & CORRIDORS 1ST FLOOR (IBC TABLE 1607.1):	100 PSF		
OFFICES (IBC TABLE 1607.1):	50 PSF		
ROOF LIVE LOADS (IBC TABLE 1607.1):	20 PSF UNIFORM, 300 LB CONCENTRATED		
SNOW LOADS (IBC SEC 1609.2):			
GROUND SNOW LOAD (IBC FIG 1609.2):	5 PSF		

FLOOD ZONE INFORMATION

BASED ON THE LSU AGRICULTURE FLOOD MAP THIS PROPERTY IS IN A FLOOD ZONE

FIRM, COMMUNITY NO. 22103C0495F DATE: 04/30/2008

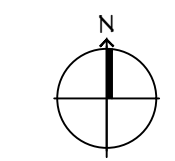
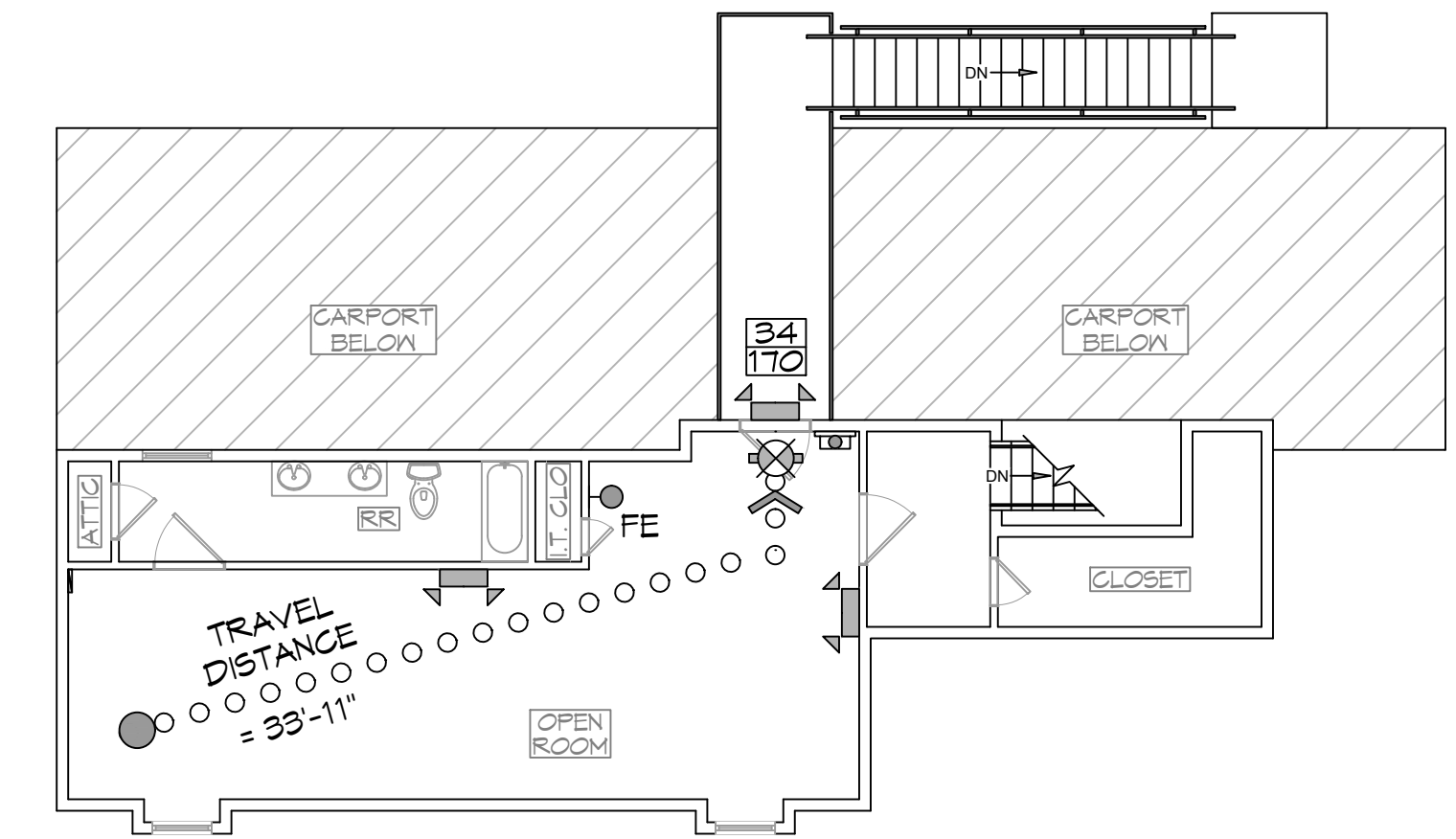
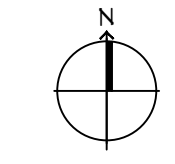
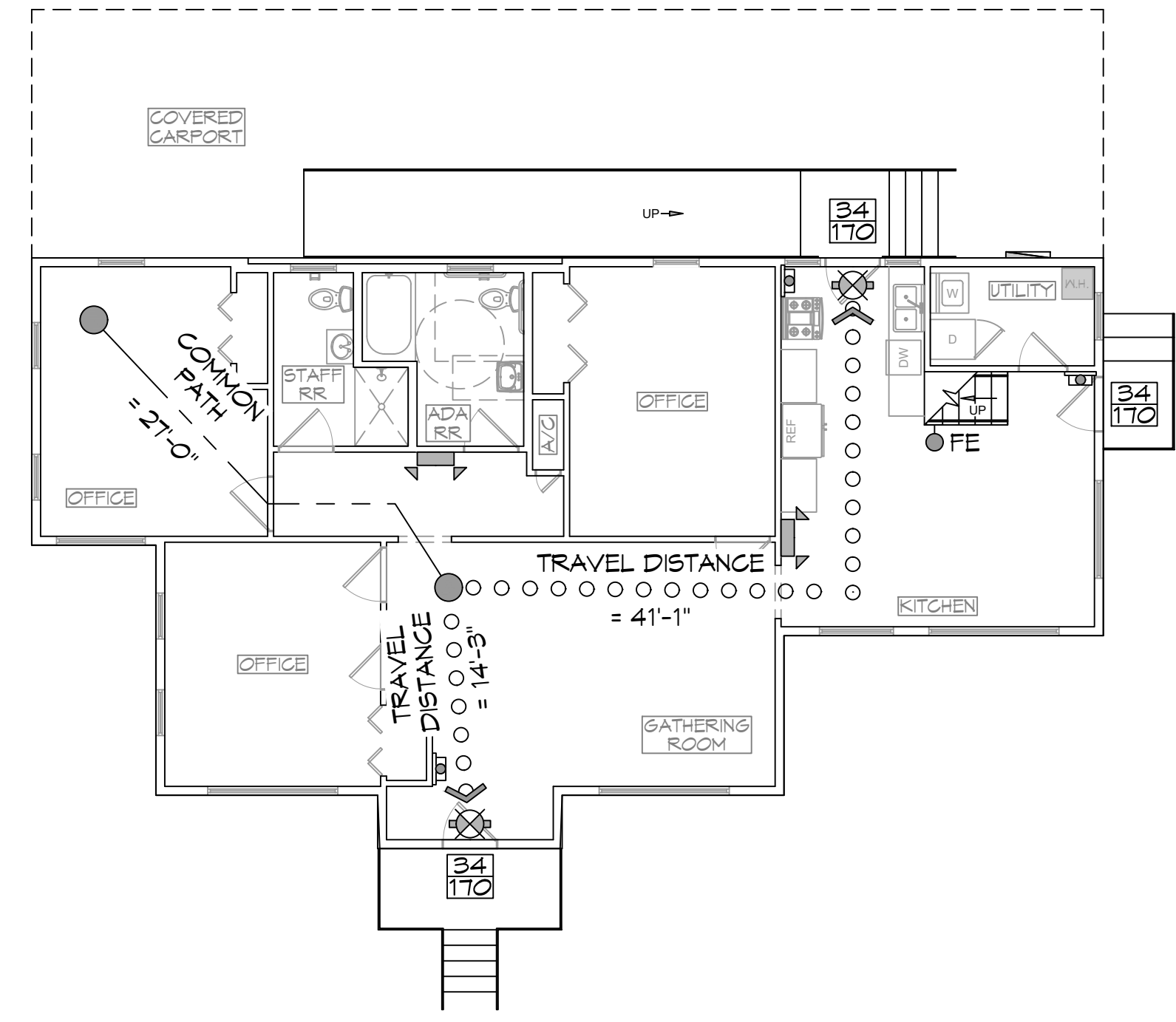
FLOOD ZONE: AE BASE FLOOD ELEVATION EL 11

LIFE-SAFETY LEGEND

SYMBOL	DESCRIPTION
	EXITS
	FIRE ALARM PULL STATION
	DOOR WIDTH/EGRESS CAPACITY
	EXIT LIGHT
	FIRE EXTINGUISHER W/ WALL MTD BRACKET
	COMMON PATH OF TRAVEL
	TRAVEL DISTANCE
	DECISION POINT

PROJECT DESCRIPTION

THIS IS A EXISTING WOOD FRAME TWO STORY OFFICE BUILDING, 1952 ERA, CONSISTING OF 2335 SQ. FT. WITH FULL FIRE ALARM AND ADA RAMPS.



VICINITY MAP



SHEET INDEX

SHEET #	SHEET TITLE
G101	GENERAL INFORMATION SHEET
C101	EXISTING SITE PLAN
A101	EXISTING FLOOR PLAN
A102	ADA RAMP & STAIR PLAN

DAMMON ENGINEERING, INC.
LOUISIANA & MISSISSIPPI

Chief Engineer: Brian Alstich, PE
554 Old Spanish Trail
Slidell, LA 70458
www.dammonengineering.com
info@dammonengineering.com
PH: 985.649.5832

#	DESCRIPTION	DATE

SEAL:

EXISTING BUILDING COLLECTIVE

940 BRAKEFIELD ST
SLIDELL, LA 70458

JOB NO: 2022 DATE: 08-31-2022
DRAWN BY: CKD CHECKED BY: JMS

SHEET TITLE:
GENERAL INFORMATION SHEET

DRAWING NUMBER:
G101

SHEET No: 1 of 4

FILE NAME: J:_Office\AMM\199_Grass_Mat_Rev01.dwg
 PLOT DATE: 08/31/2022 10:58:32 AM
 PLOT SCALE: 1"=10'-0"
 PLOT SIZE: 11.00 x 17.00
 PLOT ORIGIN: 0,0
 PLOT DEVICE: HP DesignJet T1100e

PARKING NOTES
 THIS AREA OF SLIDELL HAS ON STREET PARKING.
 NO ON SITE PARKING REQUIRED

DAMMON ENGINEERING, INC.
 LOUISIANA & MISSISSIPPI
 Chief Engineer: Brian Witch, PE
 554 Old Spanish Trail
 Slidell, LA 70468
 www.dammonengineering.com
 info@dammonengineering.com
 PH: 985.449.5832

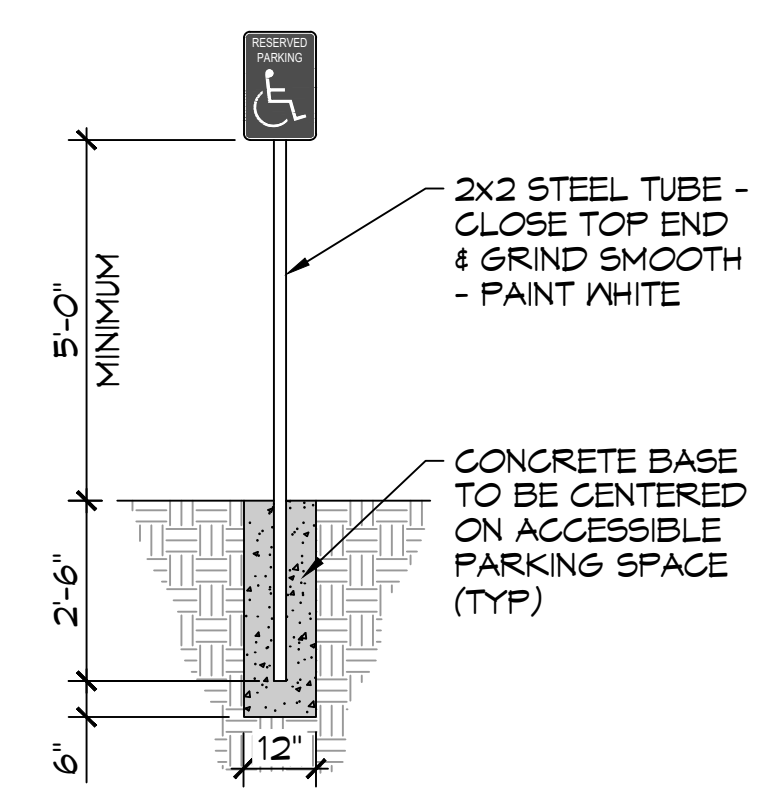
#	DESCRIPTION	REVISIONS	DATE
1			

SEAL:

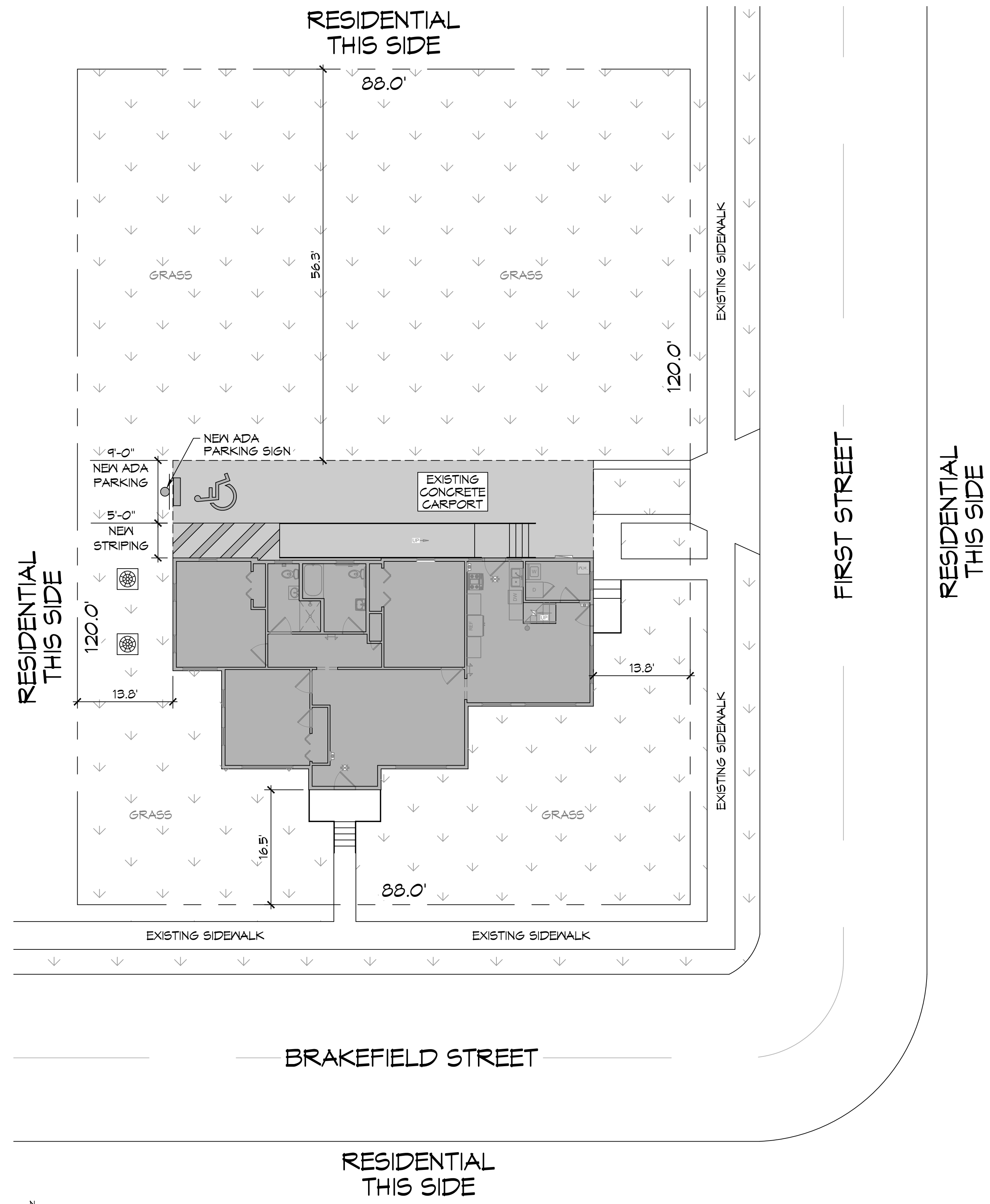
EXISTING BUILDING
G R A C E M I D E
C O L L E C T I V E
 940 BRAKEFIELD ST
 SLIDELL, LA 70468
 JOB No: 2022 DATE: 08-31-2022
 DRAWN BY: JMS CHECKED BY: CKD

SHEET TITLE:
 EXISTING SITE PLAN

DRAWING NUMBER:
C101
 SHEET No: 2 of 4

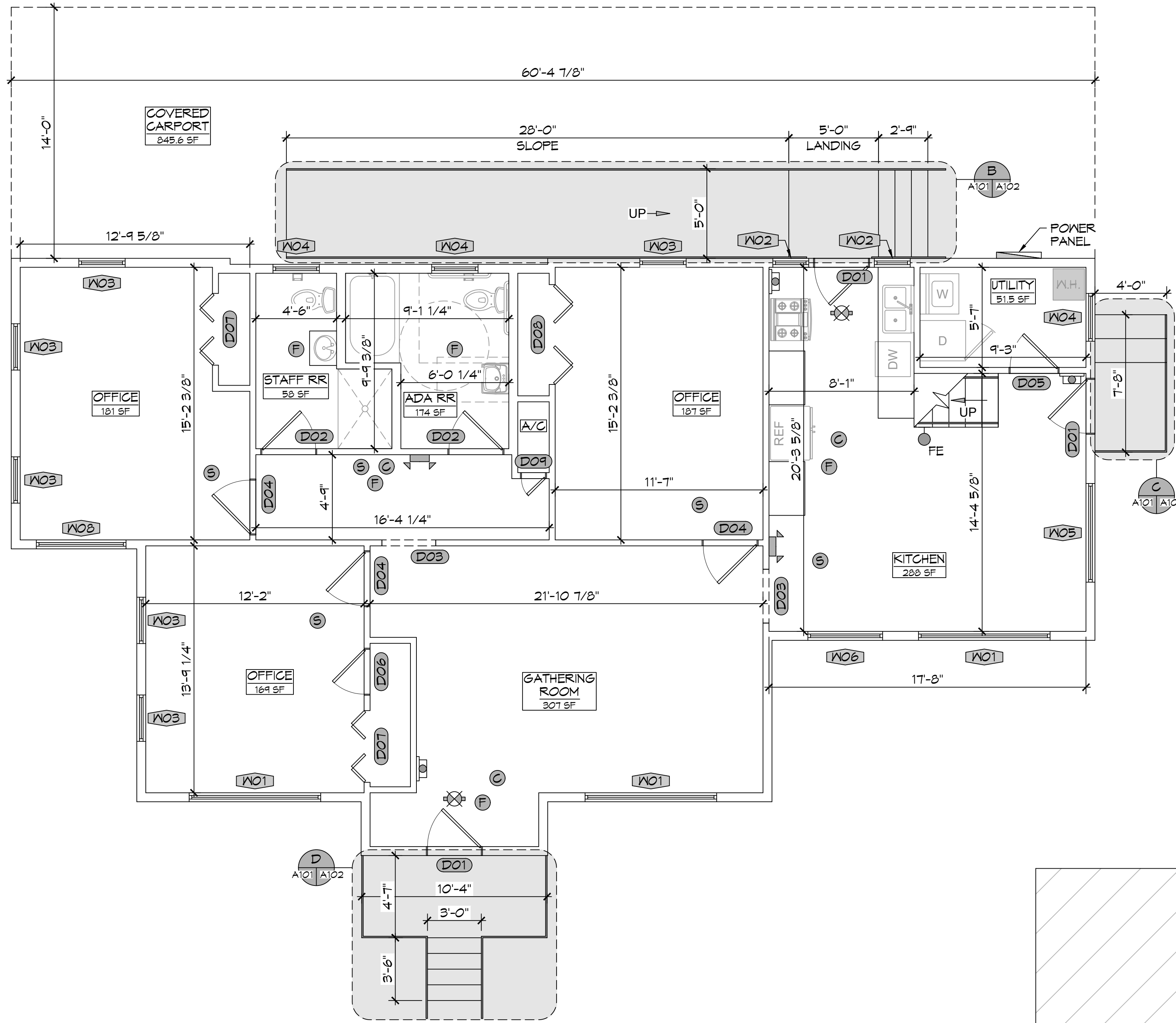


ADA PARKING SIGN
 SCALE: NTS

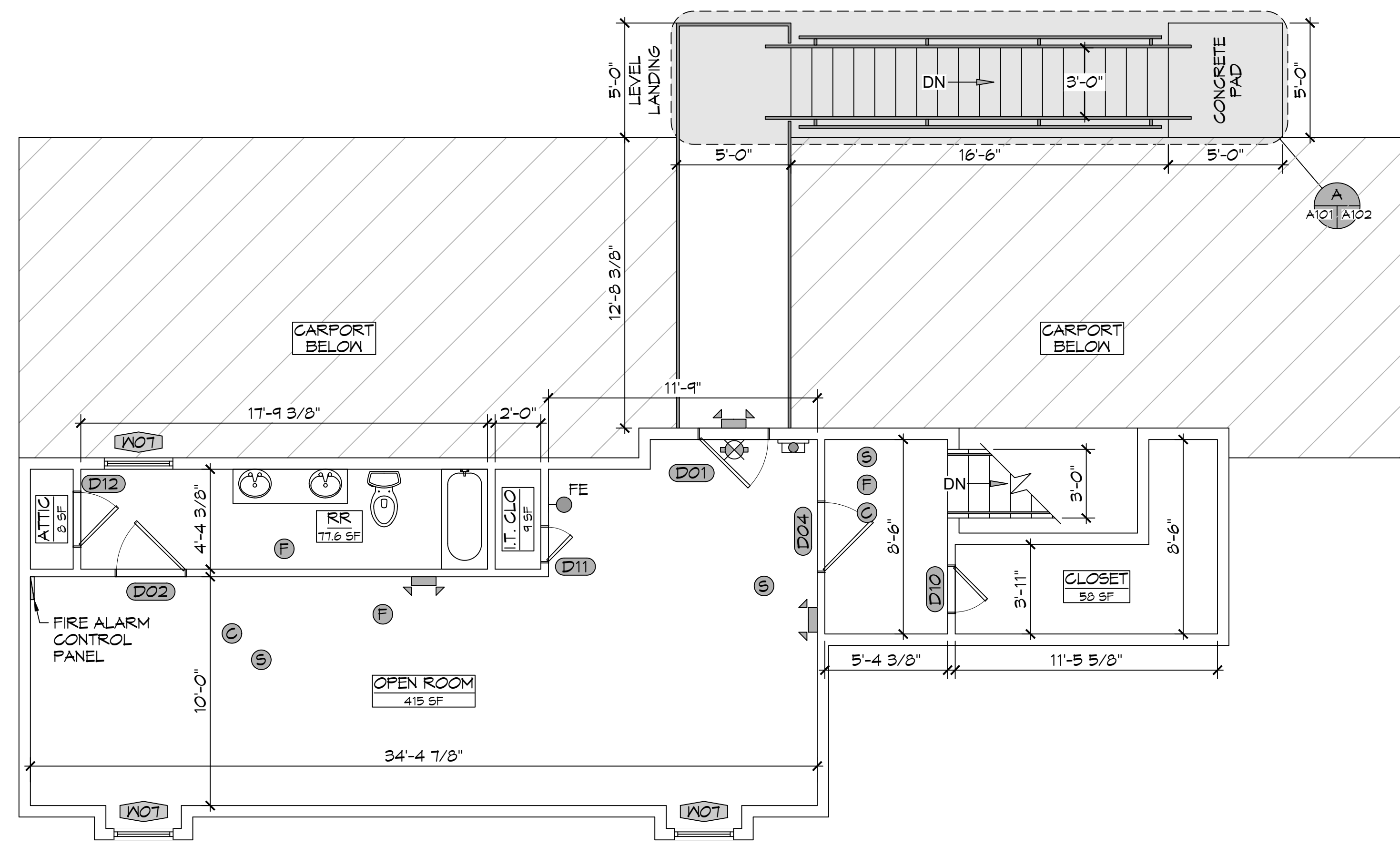


EXISTING SITE PLAN
 SCALE: 1"=10'-0"

DE: MKR, AL: JMW, MA: GRC, MO: BMD, ME: SLD, MI: SLD, MN: SLD, MS: SLD, MT: SLD, MU: SLD, MV: SLD, MW: SLD, MX: SLD, MY: SLD, MZ: SLD, NA: SLD, NB: SLD, NC: SLD, ND: SLD, NE: SLD, NF: SLD, NG: SLD, NH: SLD, NI: SLD, NJ: SLD, NK: SLD, NL: SLD, NM: SLD, NN: SLD, NO: SLD, NP: SLD, NQ: SLD, NR: SLD, NS: SLD, NT: SLD, NU: SLD, NV: SLD, NW: SLD, NX: SLD, NY: SLD, NZ: SLD, OA: SLD, OB: SLD, OC: SLD, OD: SLD, OE: SLD, OF: SLD, OG: SLD, OH: SLD, OI: SLD, OJ: SLD, OK: SLD, OL: SLD, OM: SLD, ON: SLD, OO: SLD, OP: SLD, OQ: SLD, OR: SLD, OS: SLD, OT: SLD, OU: SLD, OV: SLD, OW: SLD, OX: SLD, OY: SLD, OZ: SLD, PA: SLD, PB: SLD, PC: SLD, PD: SLD, PE: SLD, PF: SLD, PG: SLD, PH: SLD, PI: SLD, PJ: SLD, PK: SLD, PL: SLD, PM: SLD, PN: SLD, PO: SLD, PP: SLD, PQ: SLD, PR: SLD, PS: SLD, PT: SLD, PU: SLD, PV: SLD, PW: SLD, PX: SLD, PY: SLD, PZ: SLD, QA: SLD, QB: SLD, QC: SLD, QD: SLD, QE: SLD, QF: SLD, QG: SLD, QH: SLD, QI: SLD, QJ: SLD, QK: SLD, QL: SLD, QM: SLD, QN: SLD, QO: SLD, QP: SLD, QQ: SLD, QR: SLD, QS: SLD, QT: SLD, QU: SLD, QV: SLD, QW: SLD, QX: SLD, QY: SLD, QZ: SLD, RA: SLD, RB: SLD, RC: SLD, RD: SLD, RE: SLD, RF: SLD, RG: SLD, RH: SLD, RI: SLD, RJ: SLD, RK: SLD, RL: SLD, RM: SLD, RN: SLD, RO: SLD, RP: SLD, RQ: SLD, RR: SLD, RS: SLD, RT: SLD, RU: SLD, RV: SLD, RW: SLD, RX: SLD, RY: SLD, RZ: SLD, SA: SLD, SB: SLD, SC: SLD, SD: SLD, SE: SLD, SF: SLD, SG: SLD, SH: SLD, SI: SLD, SJ: SLD, SK: SLD, SL: SLD, SM: SLD, SN: SLD, SO: SLD, SP: SLD, SQ: SLD, SR: SLD, SS: SLD, ST: SLD, SU: SLD, SV: SLD, SW: SLD, SX: SLD, SY: SLD, SZ: SLD, TA: SLD, TB: SLD, TC: SLD, TD: SLD, TE: SLD, TF: SLD, TG: SLD, TH: SLD, TI: SLD, TJ: SLD, TK: SLD, TL: SLD, TM: SLD, TN: SLD, TO: SLD, TP: SLD, TQ: SLD, TR: SLD, TS: SLD, TT: SLD, TU: SLD, TV: SLD, TW: SLD, TX: SLD, TY: SLD, TZ: SLD, UA: SLD, UB: SLD, UC: SLD, UD: SLD, UE: SLD, UF: SLD, UG: SLD, UH: SLD, UI: SLD, UJ: SLD, UK: SLD, UL: SLD, UM: SLD, UN: SLD, UO: SLD, UP: SLD, UQ: SLD, UR: SLD, US: SLD, UT: SLD, UU: SLD, UV: SLD, UW: SLD, UX: SLD, UY: SLD, UZ: SLD, VA: SLD, VB: SLD, VC: SLD, VD: SLD, VE: SLD, VF: SLD, VG: SLD, VH: SLD, VI: SLD, VJ: SLD, VK: SLD, VL: SLD, VM: SLD, VN: SLD, VO: SLD, VP: SLD, VQ: SLD, VR: SLD, VS: SLD, VT: SLD, VU: SLD, VV: SLD, VW: SLD, VX: SLD, VY: SLD, VZ: SLD, WA: SLD, WB: SLD, WC: SLD, WD: SLD, WE: SLD, WF: SLD, WG: SLD, WH: SLD, WI: SLD, WJ: SLD, WK: SLD, WL: SLD, WM: SLD, WN: SLD, WO: SLD, WP: SLD, WQ: SLD, WR: SLD, WS: SLD, WT: SLD, WU: SLD, WV: SLD, WW: SLD, WX: SLD, WY: SLD, WZ: SLD, XA: SLD, XB: SLD, XC: SLD, XD: SLD, XE: SLD, XF: SLD, XG: SLD, XH: SLD, XI: SLD, XJ: SLD, XK: SLD, XL: SLD, XM: SLD, XN: SLD, XO: SLD, XP: SLD, XQ: SLD, XR: SLD, XS: SLD, XT: SLD, XU: SLD, XV: SLD, XW: SLD, XX: SLD, XY: SLD, XZ: SLD, YA: SLD, YB: SLD, YC: SLD, YD: SLD, YE: SLD, YF: SLD, YG: SLD, YH: SLD, YI: SLD, YJ: SLD, YK: SLD, YL: SLD, YM: SLD, YN: SLD, YO: SLD, YP: SLD, YQ: SLD, YR: SLD, YS: SLD, YT: SLD, YU: SLD, YV: SLD, YW: SLD, YX: SLD, YY: SLD, YZ: SLD, ZA: SLD, ZB: SLD, ZC: SLD, ZD: SLD, ZE: SLD, ZF: SLD, ZG: SLD, ZH: SLD, ZI: SLD, ZJ: SLD, ZK: SLD, ZL: SLD, ZM: SLD, ZN: SLD, ZO: SLD, ZP: SLD, ZQ: SLD, ZR: SLD, ZS: SLD, ZT: SLD, ZU: SLD, ZV: SLD, ZW: SLD, ZX: SLD, ZY: SLD, ZZ: SLD



2LEVEL ONE - EXISTING FLOOR PLAN
SCALE: 1/4" = 1'-0"



3LEVEL TWO - EXISTING FLOOR PLAN
SCALE: 1/4" = 1'-0"

EXISTING WINDOW SCHEDULE

MK	WIDTH	HEIGHT	REMARKS
W01	7'-4"	4'-4"	FIXED WINDOW
W02	2'-0"	3'-0"	OPERABLE SIDELIGHT
W03	2'-7"	4'-4"	OPERABLE WINDOW
W04	2'-7"	4'-4"	OPERABLE RR WINDOW
W05	5'-6"	4'-4"	FIXED WINDOW
W06	4'-2"	4'-4"	FIXED WINDOW
W07	2'-6"	2'-6"	OPERABLE WINDOW

EXISTING DOOR SCHEDULE

MK	WIDTH	HEIGHT	DOOR MAT	FRAME	FR	REMARKS
D01	3'-0"	8'-0"	WOOD	WOOD	NR	ENTRY DOOR
D02	3'-0"	6'-8"	WOOD	WOOD	NR	ADA RR DOOR
D03	3'-0"	6'-8"	WOOD	WOOD	NR	CASED OPENING
D04	3'-0"	6'-8"	WOOD	WOOD	NR	OFFICE DOOR
D05	2'-8"	6'-8"	WOOD	WOOD	NR	UTILITY DOOR
D06	2'-6"	6'-8"	WOOD	WOOD	NR	CLOSET DOOR
D07	4'-0"	6'-8"	WOOD	WOOD	NR	BI-FOLD DOOR
D08	5'-6"	6'-8"	WOOD	WOOD	NR	BI-FOLD DOOR
D09	1'-4"	4'-0"	WOOD	WOOD	NR	A/C CLOSET DOOR
D10	2'-0"	6'-8"	WOOD	WOOD	NR	CLOSET DOOR
D11	1'-6"	6'-8"	WOOD	WOOD	NR	I.T. CLOSET DOOR
D12	2'-4"	5'-8"	WOOD	WOOD	NR	ATTIC ACCESS DOOR

- LEGEND**
- WALL MOUNTED EMERGENCY LIGHT
 - CEILING MOUNTED EXIT LIGHT
 - FIRE ALARM PULL
 - WALL MOUNTED FIRE EXTINGUISHER
 - CEILING MOUNTED FIRE ALARM
 - CEILING MOUNTED SMOKE ALARM
 - CEILING MOUNTED CARBON MONOXIDE ALARM

DAMMON ENGINEERING, INC.
 LOUISIANA & MISSISSIPPI
 Chief Engineer: Brian Misch, PE
 554 Old Spanish Trail
 Slidell, LA 70458
 www.dammonengineering.com
 info@dammonengineering.com
 PH: 985.649.5832

REVISIONS

#	DESCRIPTION	DATE

SEAL:

EXISTING BUILDING
GRACE MIDWIFERY COLLECTIVE
 SHEET TITLE:
 EXISTING FLOOR PLAN
 DRAWING NUMBER:
A101
 SHEET No: 3 of 4

340 BRANFELD ST
 SLIDELL, LA 70458
 JOB No: 2022
 DATE: 08-31-2022
 DRAWN BY: JMS
 CHECKED BY: TNT

