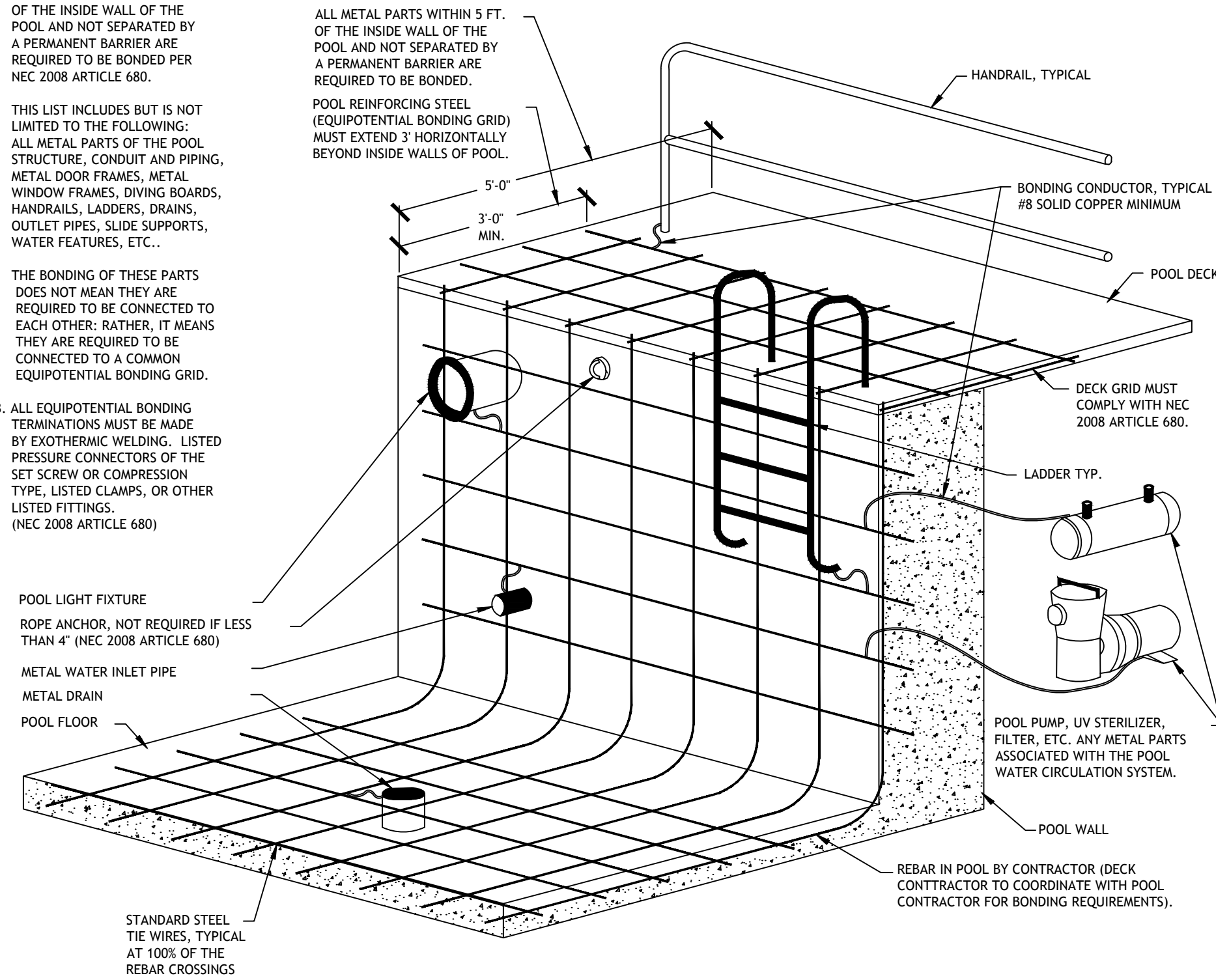


NOTES:

1. ANY AND ALL METAL PARTS ASSOCIATED WITH THE POOL WATER CIRCULATION SYSTEM (I.E. PUMPS) SHALL BE BONDED PER NEC 2008 ARTICLE 680.
2. ALL METAL PARTS WITHIN 5 FT. OF THE INSIDE WALL OF THE POOL AND NOT SEPARATED BY A PERMANENT BARRIER ARE REQUIRED TO BE BONDED PER NEC 2008 ARTICLE 680.
THIS LIST INCLUDES BUT IS NOT LIMITED TO THE FOLLOWING: ALL METAL PARTS OF THE POOL STRUCTURE, CONDUIT AND PIPING, METAL DOOR FRAMES, METAL WINDOW FRAMES, DIVING BOARDS, HANDRAILS, LADDERS, DRAINS, OUTLET PIPES, SLIDE SUPPORTS, WATER FEATURES, ETC...
THE BONDING OF THESE PARTS DOES NOT MEAN THEY ARE REQUIRED TO BE CONNECTED TO EACH OTHER; RATHER, IT MEANS THEY ARE REQUIRED TO BE CONNECTED TO A COMMON EQUIPOTENTIAL BONDING GRID.
3. ALL EQUIPOTENTIAL BONDING TERMINATIONS MUST BE MADE BY EXOTHERMIC WELDING. LISTED PRESSURE CONNECTORS OF THE SET SCREW OR COMPRESSION TYPE, LISTED CLAMPS, OR OTHER LISTED FITTINGS. (NEC 2008 ARTICLE 680)

ALL METAL PARTS WITHIN 5 FT. OF THE INSIDE WALL OF THE POOL AND NOT SEPARATED BY A PERMANENT BARRIER ARE REQUIRED TO BE BONDED.
POOL REINFORCING STEEL (EQUIPOTENTIAL BONDING GRID) MUST EXTEND 3' HORIZONTALLY BEYOND INSIDE WALLS OF POOL.

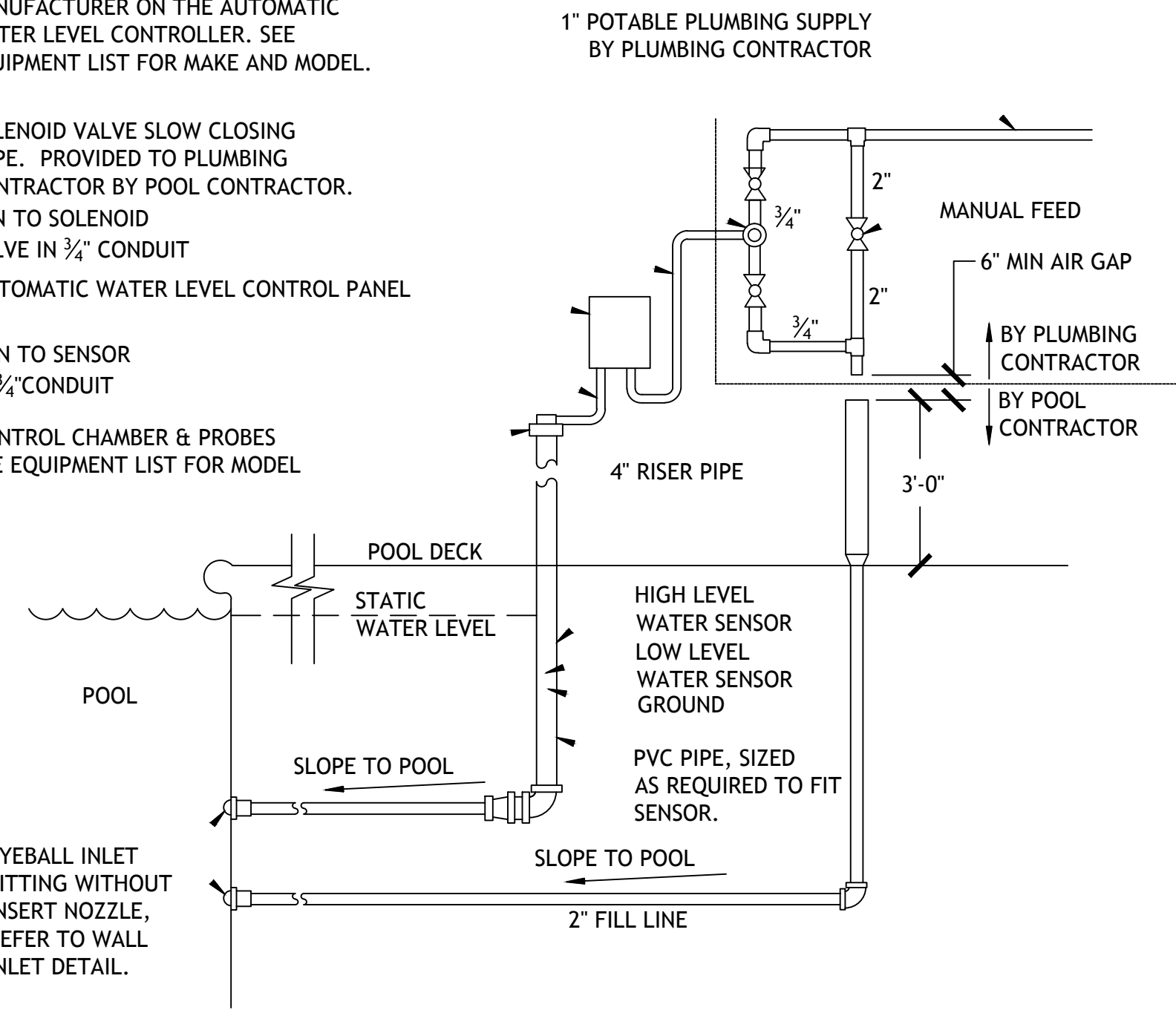


1 GROUNDING-BONDING TYP. DETAIL
PL-1.2 SCALE: NTS

NOTE:

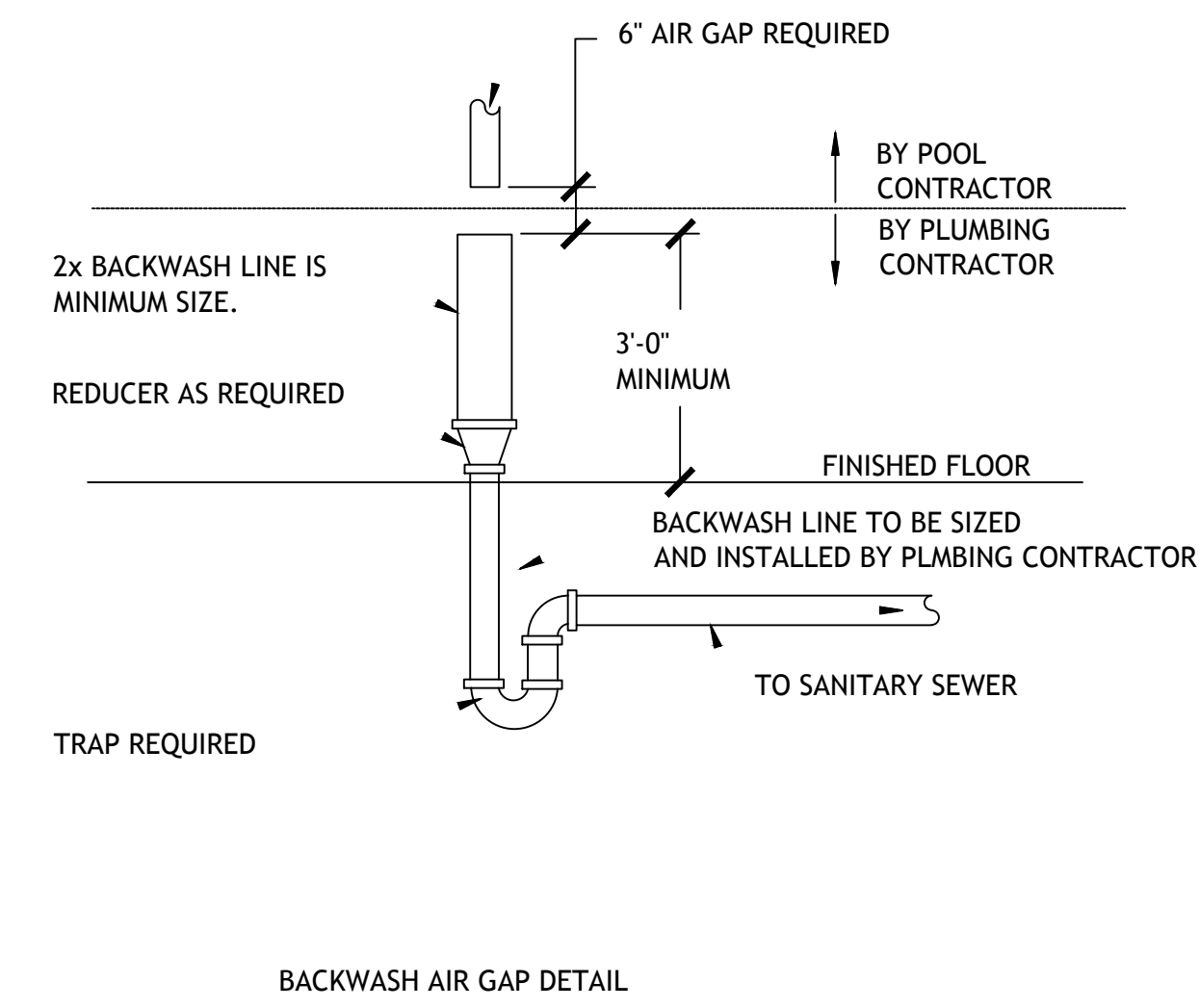
ALSO REFER TO THE INSTALLATION AND OPERATION INSTRUCTIONS FROM THE MANUFACTURER ON THE AUTOMATIC WATER LEVEL CONTROLLER. SEE EQUIPMENT LIST FOR MAKE AND MODEL.

SOLENOID VALVE SLOW CLOSING TYPE. PROVIDED TO PLUMBING CONTRACTOR BY POOL CONTRACTOR. RUN TO SOLENOID VALVE IN 3/4" CONDUIT
AUTOMATIC WATER LEVEL CONTROL PANEL
RUN TO SENSOR IN 3/4" CONDUIT
CONTROL CHAMBER & PROBES
SEE EQUIPMENT LIST FOR MODEL

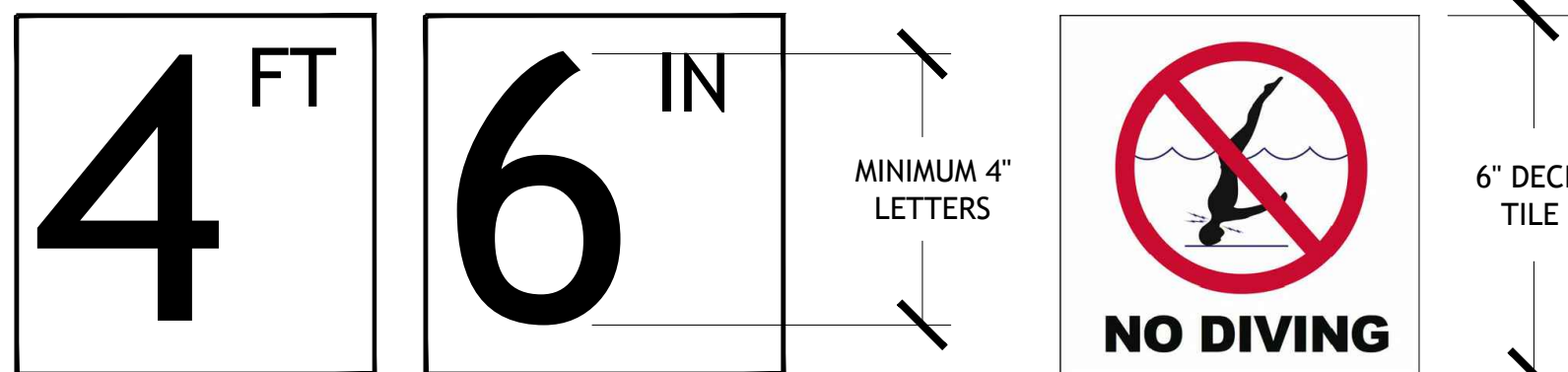
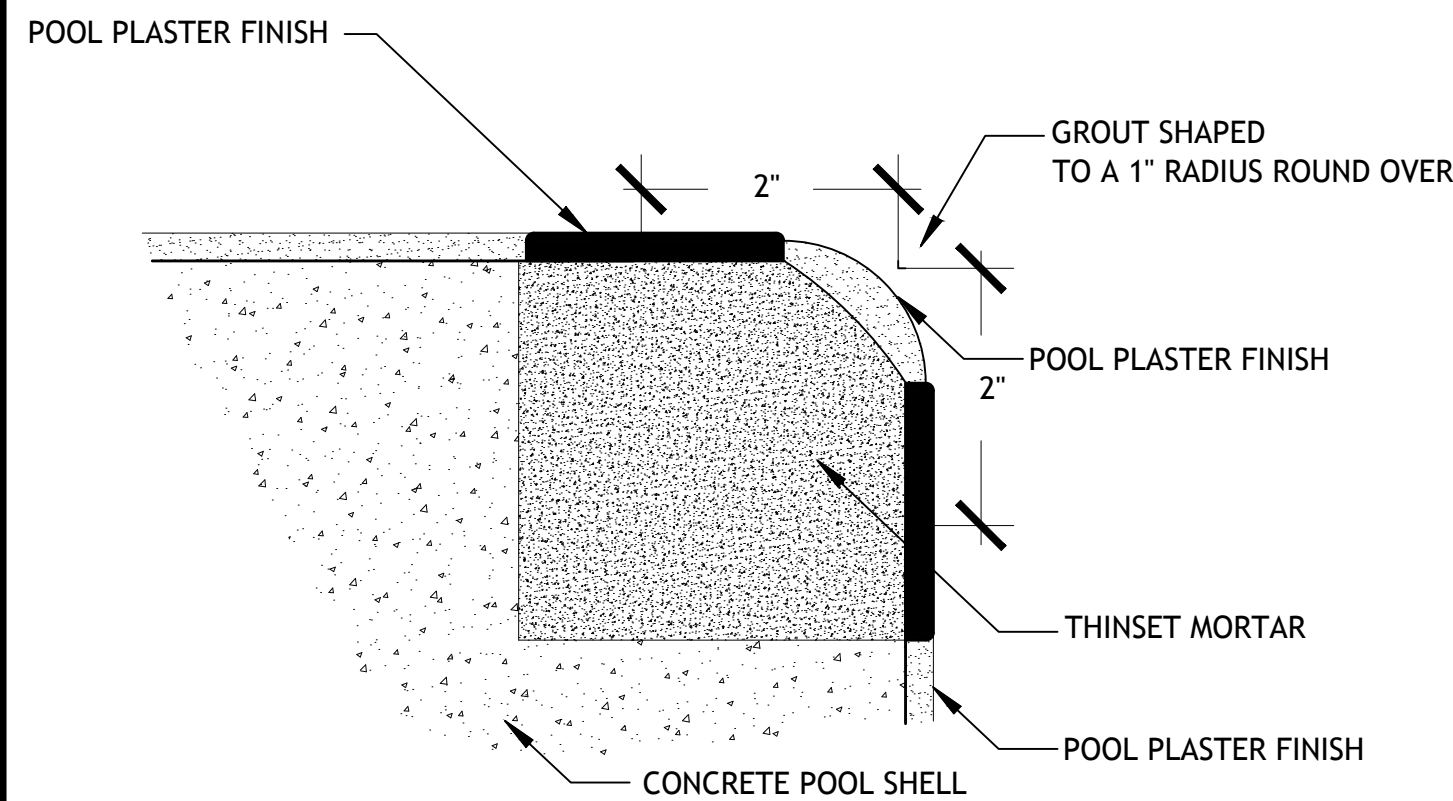


2 AUTOFILL TYP. DETAIL
PL-1.2 SCALE: NTS

BACKWASH LINE FROM POOL FILTER (S), SEE PIPING SCHEMATIC.



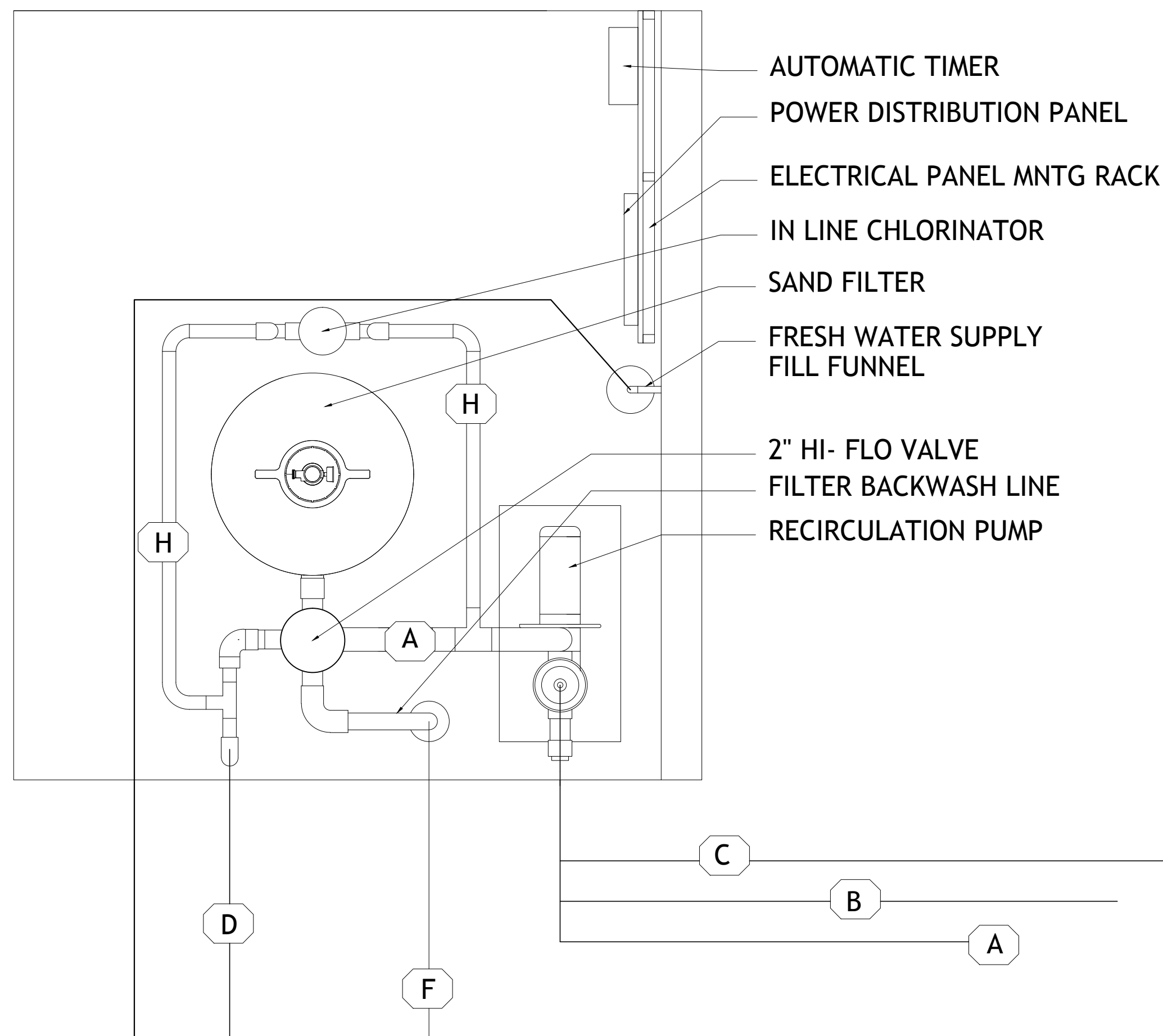
3 BACKWASH TYP. DET.
PL-1.2 SCALE: NTS



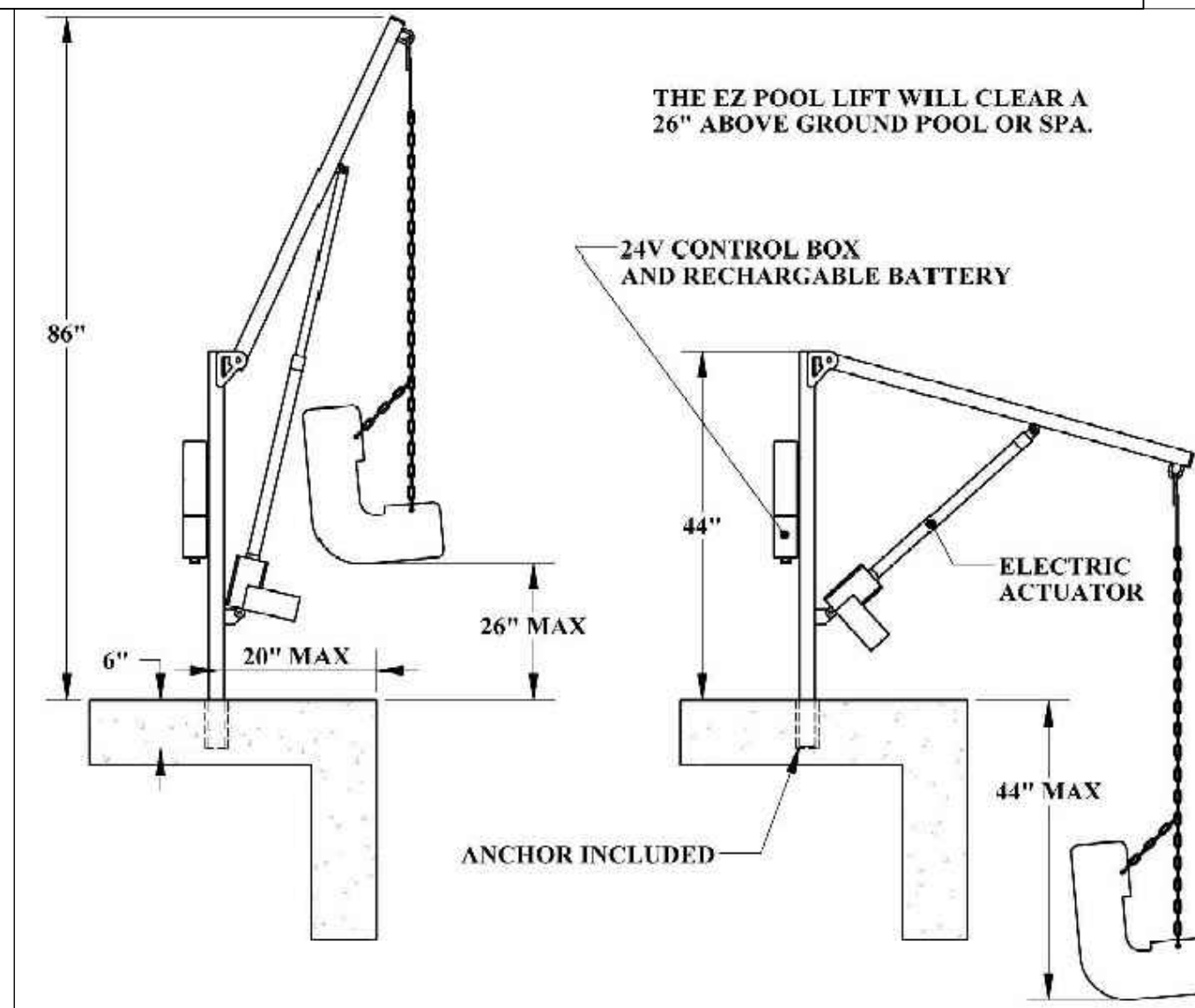
- MARKER REQUIREMENTS:
1. DEPTH MARKERS BOTH SHOWING FEET AND INCHES
 2. "NO DIVING" SYMBOL MARKER WITH EACH DEPTH MARKER.

- NOTES:
1. DEPTH MARKERS SHALL BE PLACED ON THE DECK WITH SPACING NOT TO EXCEED 25'-0", POINTS OF CHANGE IN SLOPE, AND TO ALSO PLACE A CORRESPONDING DEPTH MARKER IN DUPLICATE ON THE POOL WALL.
 2. DECK TILES TO BE WITHIN 18" OF THE POOL WATER SURFACE
 3. DECK TILES TO BE POSITIONED TO BE READ WHILE STANDING ON THE DECK FACING THE WATER.
 4. DEPTH MARKERS TO BE IN ENGLISH.
 5. NUMERICAL COLOR OF LETTERING TO BE BLACK, ON WHITE BACKGROUND.
 6. "NO DIVING" INTERNATIONAL SYMBOL MARKER TO BE PLACED AT EVERY LOCATION WHERE A DEPTH MARKER IS LOCATED.

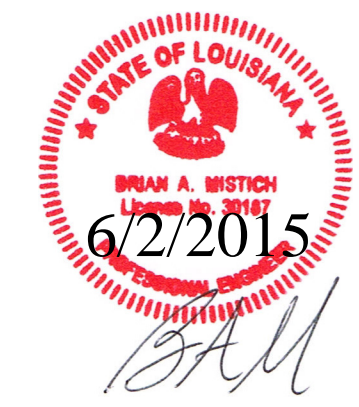
5 POOL TILE / DEPTH MARKERS
PL-1.2 SCALE: NTS



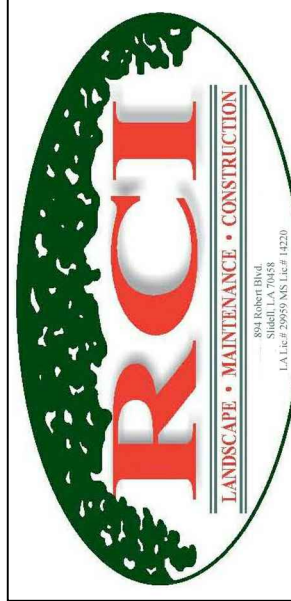
6 EQUIPMENT PAD LAYOUT TYP. NOTE: SEE SHEET PL-1.3, POOL SCHEMATIC FOR DETAILED COMPONENTS.
PL-1.2 SCALE: 3/4" = 1'-0"



4 ADA LIFT DETAIL
PL-1.2 SCALE: 1/4" = 1'-0"



PIPE IDENTIFICATION LEGEND					
IDENTIFICATION	PLAN ID	SIZE	TYPE	FLOW RATE	VELOCITY
MAIN DRAIN SUCTION	A	2.0"	SCH 40 PVC	56.08 GPM	5.73 FPS
SKIMMER SUCTION	B	2.0"	SCH 40 PVC	56.08 GPM	5.73 FPS
SKIMMER SUCTION	C	2.0"	SCH 40 PVC	56.08 GPM	5.73 FPS
INLET RETURN	D	2.0"	SCH 40 PVC	56.08 GPM	5.73 FPS
INLET RETURN	E	1.5"	SCH 40 PVC	28.04 GPM	5.09 FPS
OVERFLOW LINE	F	2.0"	SCH 40 PVC	N/A	N/A
WL SAMPLE LINE	G	1.0"	SCH 40 PVC	N/A	N/A
CHLORINE SAMPLE	H	1.0"	SCH 40 PVC	N/A	N/A



894 ROBERT BOULEVARD
SLIDELL, LOUISIANA 70458
PH. 985-643-2427
FAX 985-643-2691
ROTOLO@ROTOLOCONSULTANTS.COM

LAKE VILLA APARTMENT
POOL RENOVATION
LAKE AVENUE
METAIRIE, LA.

Copyright 2015 Rotolo Consultants Inc.
These drawings or parts thereof, may not be reproduced in any form, by any method, for any purpose, without prior written consent from Rotolo Consultants Inc.
Contact: Rod Rotolo 985-643-2427
Project No: 82-14080-LA

Revisions:		
No.	Date:	Description:
01	5-19-2015	REV. PER BOH LTR

Date: 3/17/2015
Drawn: TJH
Checked: MR
Sheet Title:

TYPICAL DETAILS
&
EQUIPMENT PAD
LAYOUT

Drawing No.
PL-1.2
Sheet No.
4 of 5