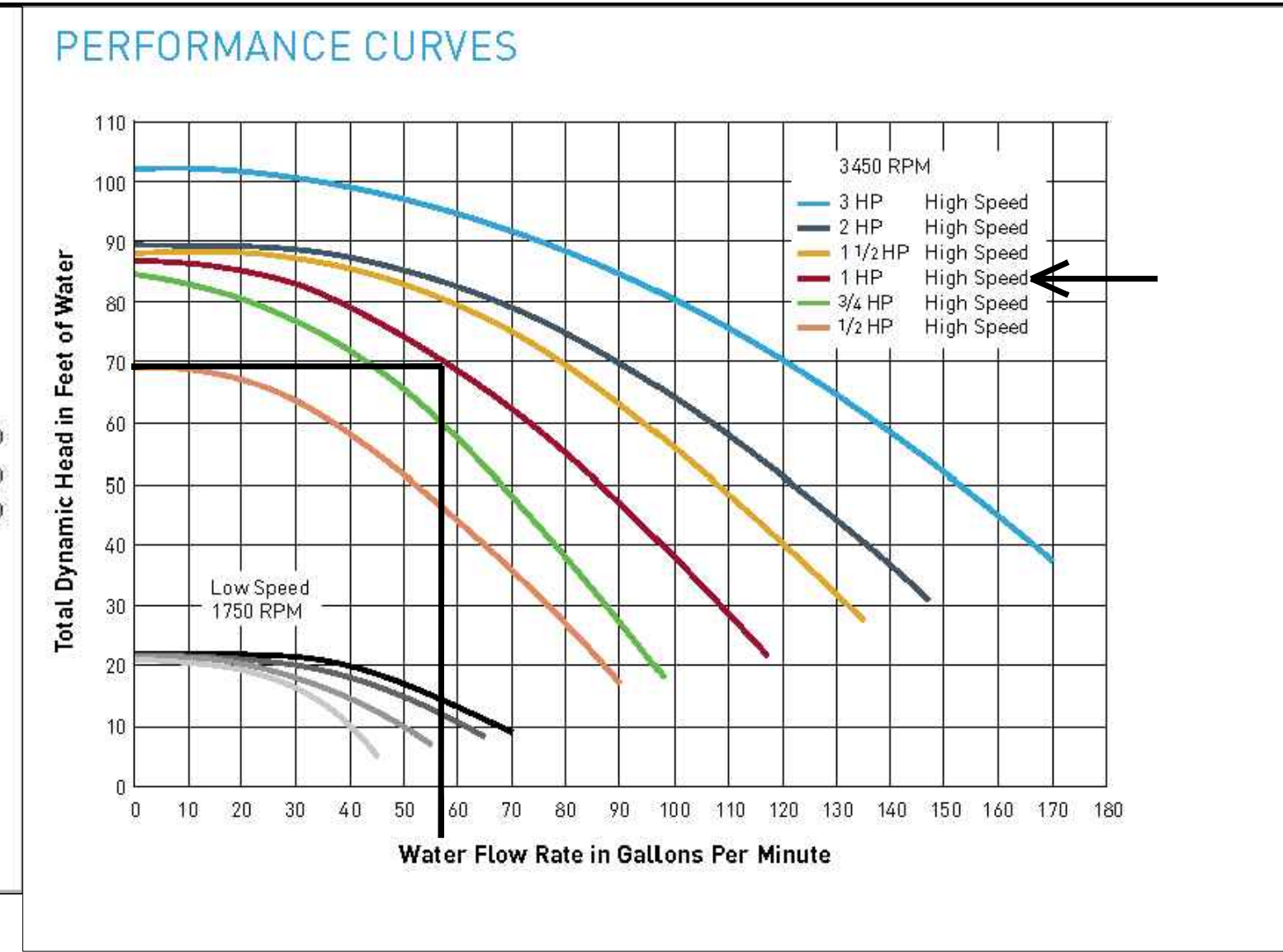
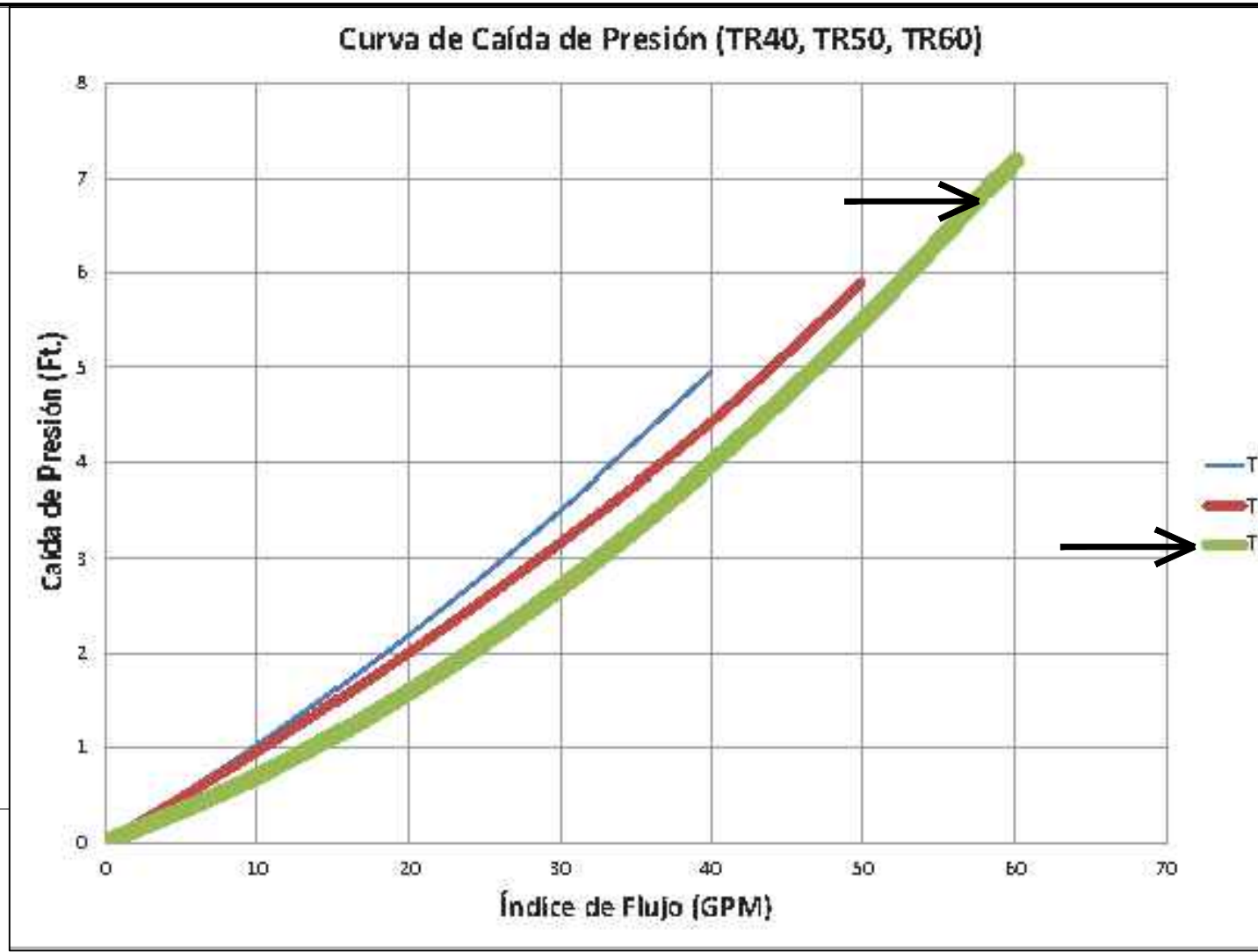


DIMENSION TABLE				
MODEL	A. DIM.	B. DIM.	C. DIM.	D. DIM.
TR 40	30-1/2 in.	19-1/2 in.	10-3/4 in.	32-1/2 in.
TR 50	34-3/4 in.	21-1/2 in.	11-7/8 in.	36-3/4 in.
TR 60	35-1/2 in.	24-1/2 in.	13-5/8 in.	37-1/2 in.
TR 100	39-3/4 in.	30-1/2 in.	16-1/4 in.	41-3/4 in.
TR 140	45-1/4 in.	36-1/2 in.	18-3/4 in.	47-1/4 in.



1 FILTER CUT SHEET
SCALE: NTS

2 FILTER PERFORMANCE CURVE
SCALE: NTS

3 PUMP PERFORMANCE CURVE
SCALE: NTS

WHISPERFLO™
HIGH PERFORMANCE PUMP

Quiet and efficient...
Heavy-duty...
Durable...
Developed...
QUIET EFFICIENT DURABLE...
PERFORMANCE CURVES...
AVAILABLE FROM:
PENTAIR

3-bend Stair Rails

- Taking 90° OD
- Wall thickness .049" or .062"
- Stainless Steel 304 or 316, Marine Grade** (add -FPG to part number)
- Bends: 4" Radius
- Options: Powder-coating and Stainless Steel Finishes available
- Recommended anchors: AS-1000 (order separately)
- Recommended sealant: EP-100 (order separately)
- **Minimum wall thickness - .049 for Residential, .062 for Commercial
- **Minimum requirement for salt pools is 316L Marine Grade

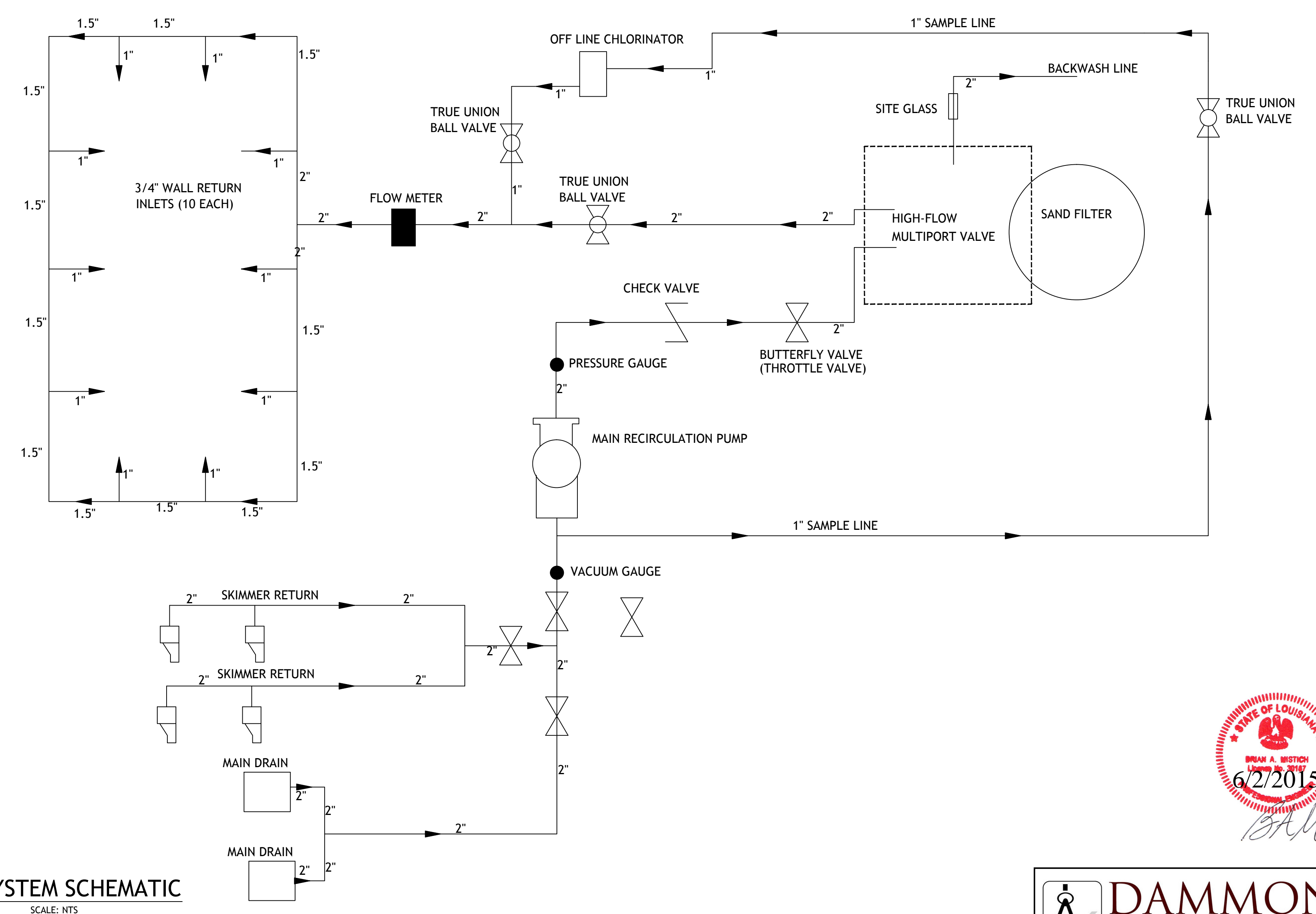
Model	Description	A	B	C	D	Weight	Length	Radius	Notes
DR-4	4" x 1/2" x 30"	14"	18"	22"	26"	8.25 lbs	80"	4"	2"
DR-6	6" x 1/2" x 30"	16"	20"	24"	28"	12.5 lbs	80"	4"	2"
DR-8	8" x 1/2" x 30"	18"	22"	26"	30"	16.5 lbs	80"	4"	2"
DR-10	10" x 1/2" x 30"	20"	24"	28"	32"	20.5 lbs	80"	4"	2"
DR-12	12" x 1/2" x 30"	22"	26"	30"	34"	24.5 lbs	80"	4"	2"
DR-14	14" x 1/2" x 30"	24"	28"	32"	36"	28.5 lbs	80"	4"	2"
DR-16	16" x 1/2" x 30"	26"	30"	34"	38"	32.5 lbs	80"	4"	2"

SR Smith
www.srsmith.com 780.824.4387

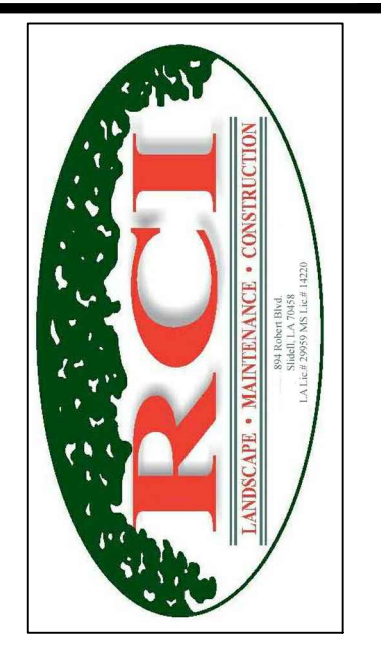
4 PUMP DATA SHEET
SCALE: NTS

5 ENTRY RAILS
SCALE: NTS

6 SYSTEM SCHEMATIC
SCALE: NTS



DAMMON ENGINEERING, INC.
Architects & Engineers
554 Old Spanish Trail Slidell, LA 70458 985-649-5832



894 ROBERT BOULEVARD
SLIDELL, LOUISIANA 70458
PH: 985-643-2427
FAX: 985-643-2699
PROTOL@ROTOLOCONSULTANTS.COM

**LAKE VILLA APARTMENT
POOL RENOVATION**
LAKE AVENUE
METAIRIE, LA.

Copyright 2015 Rotolo Consultants Inc.
These drawings or parts thereof, may not be reproduced in any form, by any method, for any purpose, without prior written consent from Rotolo Consultants Inc.
Contact: Rod Rotolo 985-643-2427
Project No: 82-14080-LA

Revisions:		
No.	Date	Description
01	5-19-2015	REV. PER BOH LTR

Date: 3/17/2015
Drawn: TJH
Checked: MR
Sheet Title:

DATA SHEETS & PERFORMANCE CURVES

Drawing No.

PL-1.3
Sheet No.
5 of 5

