

REVISION	BY

DUPLOTTIS DESIGN GROUP, PC
 CIVIL ENGINEERING - ARCHITECTURE - LANDSCAPE ARCHITECTURE
 4307 BLUEBONNET BOULEVARD, SUITE A
 BATON ROUGE, LA 70809
 WWW.DDGP.COM PHONE: 225.751.4490 FAX: 225.751.4495
 THIBODAUX | COVINGTON | HOUSTON | BATON ROUGE | MOBILE | ATLANTA

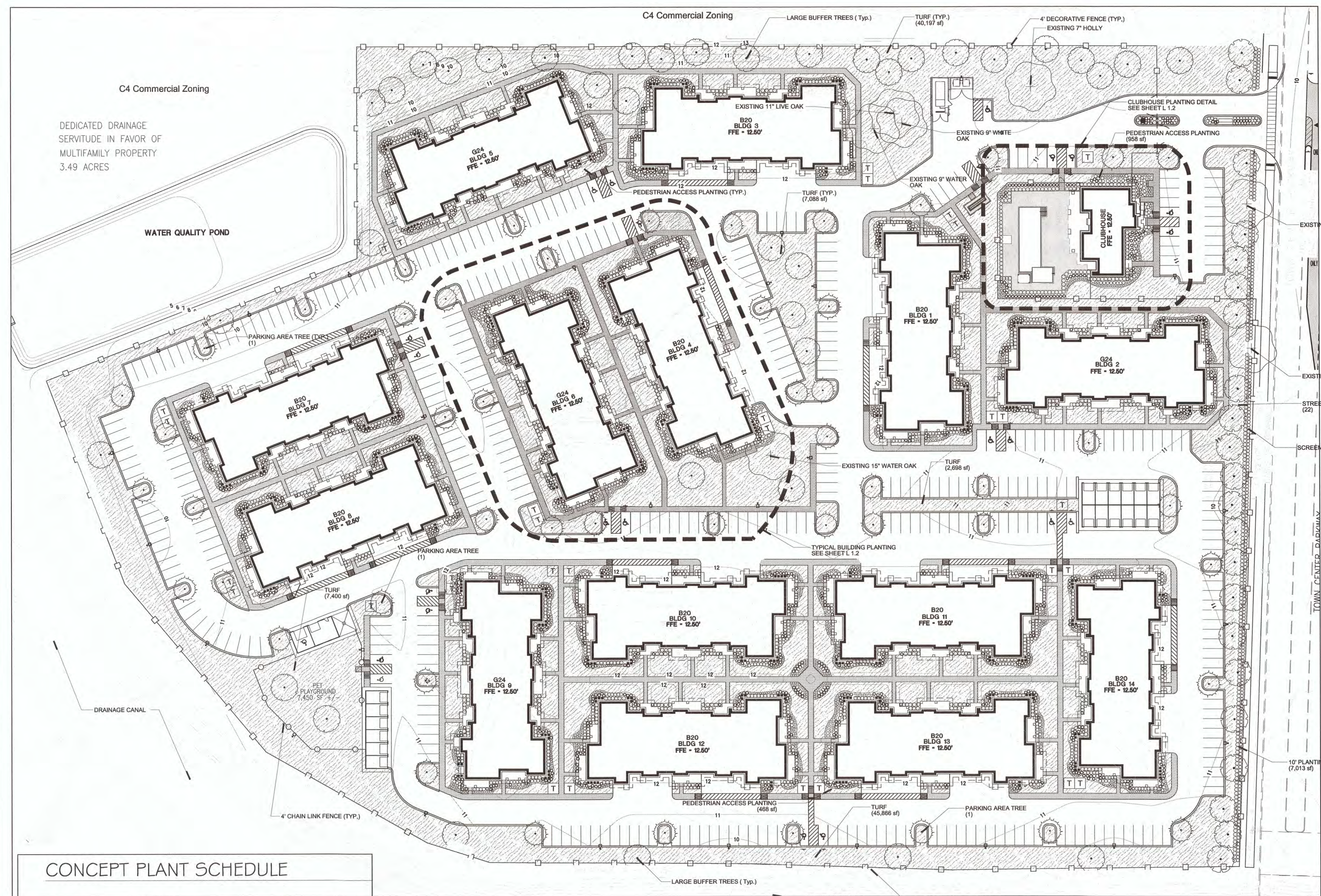
STAMP

SIGNATURE:

DATE: 7-10-14

TOWN CENTER PARKWAY - NS
 SLIDELL, LA.
 PARISH/COUNTY
 FOR CONTINENTAL PROPERTIES COMPANY, INC.

DRAWN: JPL
 CHECKED: CDD
 ISSUED DATE: 7-10-14
 ISSUED FOR CITY REVIEW
 PROJECT NO. 14-248
 FILE 14-248 Concept Landscape Plan L-1 J Rev2
 SHEET **L-1.1**

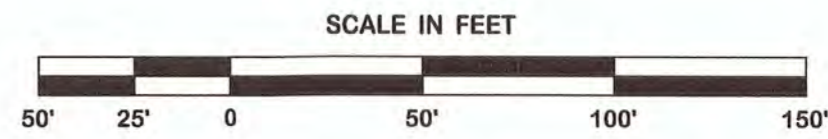


PROGRESS SET - FOR REVIEW ONLY
 Issued 7-10-14

These documents are for Design Review and not intended for Construction, Bidding, Recordation, Conveyance Scales, or as the basis for issuance of a Permit. They were prepared by, or under the supervision of:

Landscape Architect Jason Londrem # L-242
 Duplantis Design Group, P.C.

CONCEPT LANDSCAPE PLAN



CONCEPT PLANT SCHEDULE

	STREET TREES 3" Caliper Min. (Mature Height - 50') Acer rubrum / Red Maple Liriodendron tulipifera / Tulip Tree Quercus alba / White Oak Quercus nuttallii / Nuttall Oak Quercus virginiana 'High Rise' / High Rise Live Oak Taxodium distichum / Bald Cypress	22
	PARKING AREA TREE 3" Caliper Min. (Mature Height - 50') Acer rubrum / Red Maple Liriodendron tulipifera / Tulip Tree Taxodium distichum / Bald Cypress	50
	EXISTING TREES -	7
	LARGE BUFFER TREES 3" Caliper Min. (Mature Height - 50') Quercus falcata / Southern Red Oak Quercus virginiana / Southern Live Oak Quercus virginiana 'High Rise' / High Rise Live Oak	38
	ENTRY PLANTING 1 Azalea Encore 'Autumn Twist' TM / Autumn Twist Azalea Rosa Drift / Drift Roses	1,118

	ENTRY PLANTING 2 Miscanthus sinensis 'Gracillimus' / Maiden Grass Miscanthus sinensis 'Purpureus' / Flame Grass Muhlenbergia capillaris / Pink Muhly	1,128
	ENTRY PLANTING 3 Diets bicolor 'Moraea' / Bicolor Ins Ilex cornuta 'Canessa' / Canessa Holly Ilex vomitoria 'Nana' / Dwarf Yaupon Ins fulva / Ins Loropetalum chinense rubrum 'Pixie' / Pixie Loropetalum Rhapidolepis indica / Indian Hawthorn	1,280
	ENTRY PLANTING 4 Diets bicolor / Fortnight Lily Ins louisiana 'Margaret Hunter' / Blue Swamp Ins	2,017
	TURF Cynodon dactylon / Bermuda Grass	194,435 sf

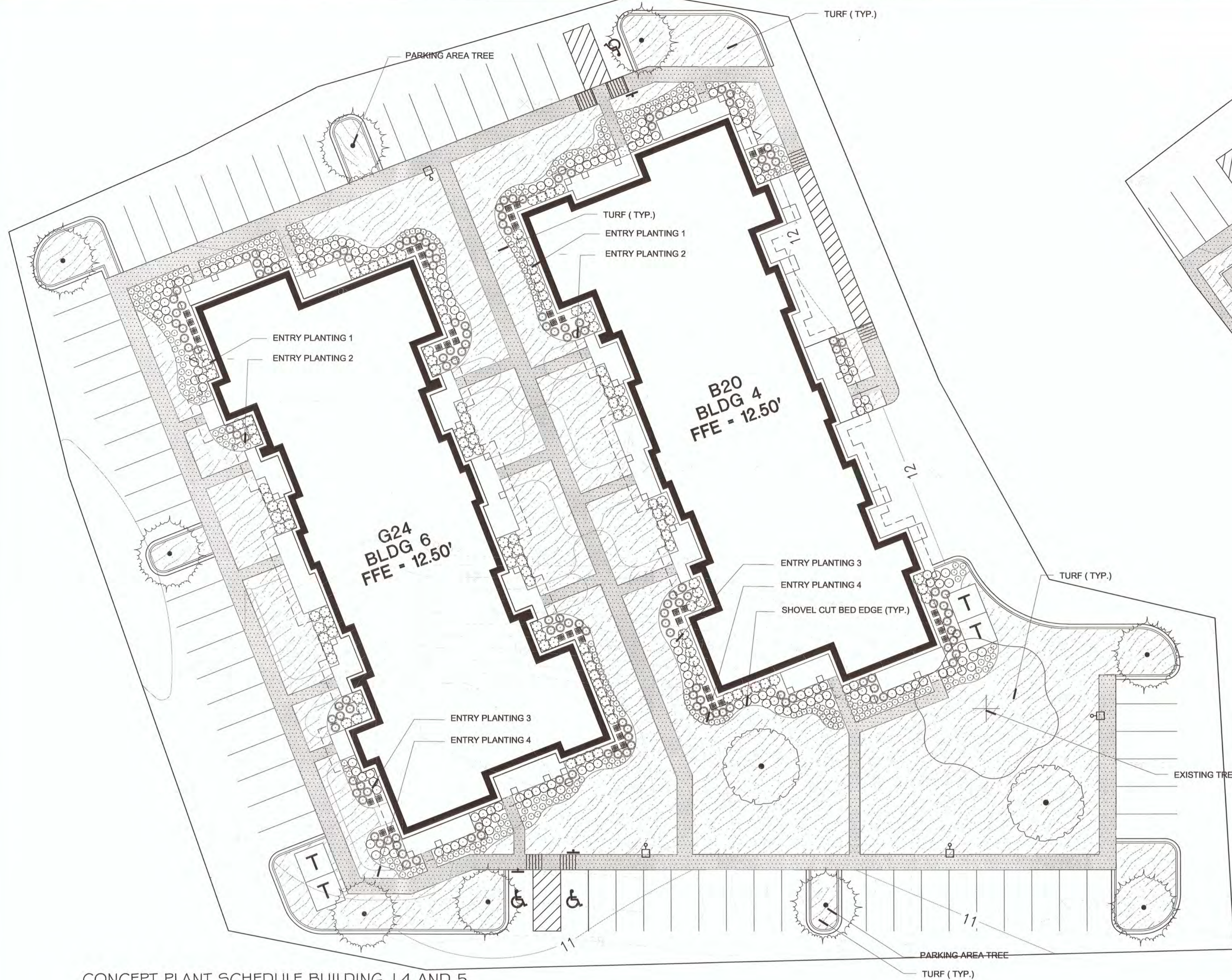
SLIDELL, LA CODE MATRIX FOR:
Town Center Parkway NS #14-248

RIGHT-OF-WAY REQUIREMENTS	(per Section 2.261.3)	Provided
10' wide planting area established off of all public rights-of-way?		YES
Is planting area between the right-of-way and the parking area?		YES

PARKING LOT REQUIREMENTS	(per Section 2.251.4)	Provided
Parking Spaces	592	50
Trees (1 Tree/12 spaces)	= 50 Trees Required	50
Is each Tree within a Landscape Island of 200 SF minimum?		Yes
Is each Trunk at least 5' from all curbs or wheel guards?		Yes

PEDESTRIAN REQUIREMENTS	(per Section 2.251.5)	Provided
Building Face Distance	3,590 LF	
Planting Area (200 SF/50 LF of Bldg Face)	= 14360 SF Required	52,230 SF
Is Planting Area 5' wide minimum?		YES

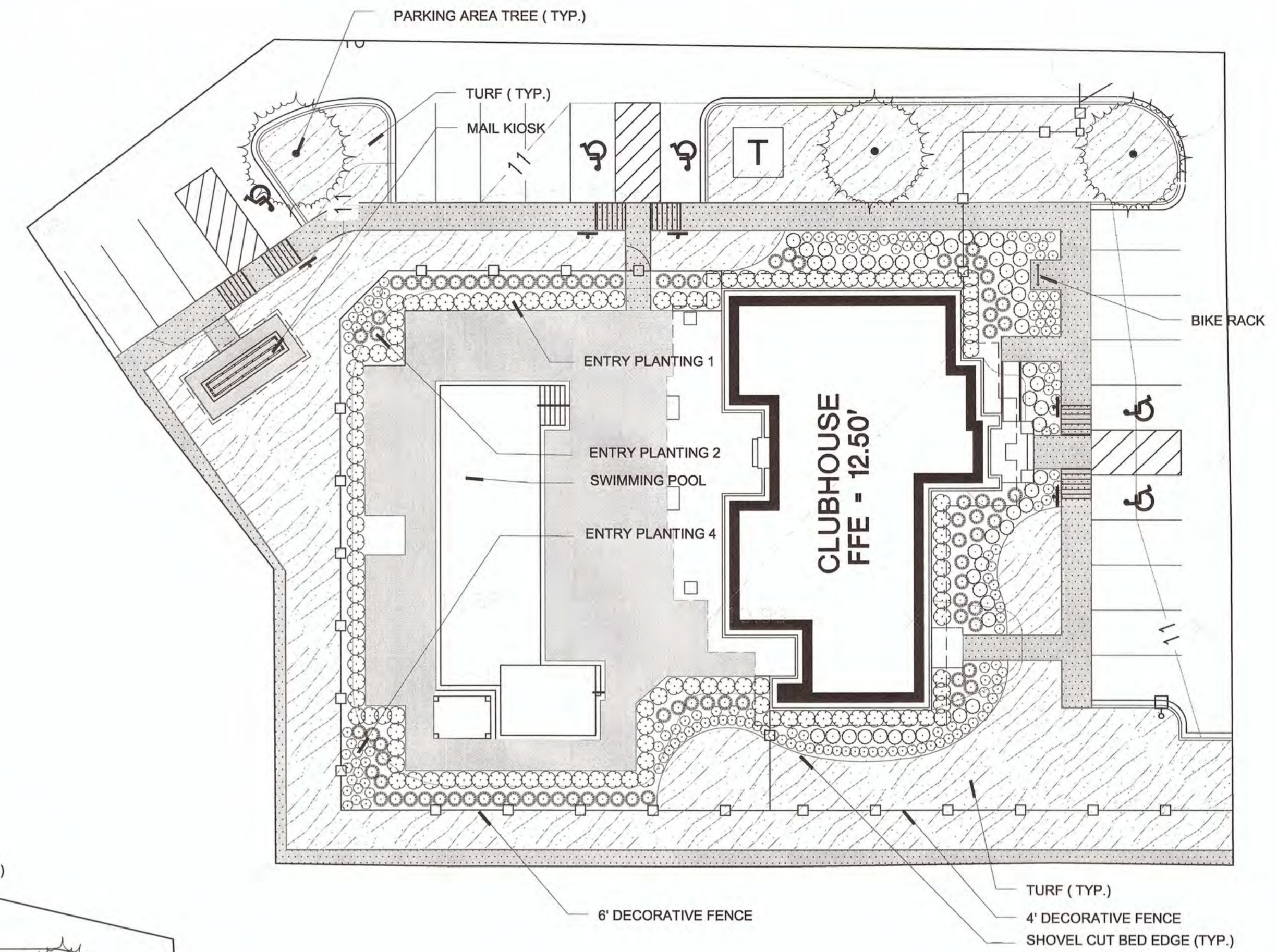
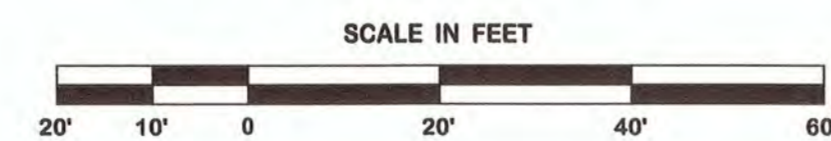
Do trees specified reach a minimum 20' height at maturity?		YES
LF of Street Frontage (25' Depth)	755 LF	(1/25 LF)
Trees (1/25LF)	= 30 Trees Required	*22 Trees Provided
*Existing Tree Credit (4 credits for each tree saved)	2 Trees Saved	8 Tree Credits
STREET PLANTING REQUIREMENTS MET AS FOLLOWS:		
Street Trees	= 22 Trees Provided	
Is there continuous vegetation screening the parking areas?	Yes	YES
Are at least 75% of the trees from the city's recommended tree list?	Yes	YES



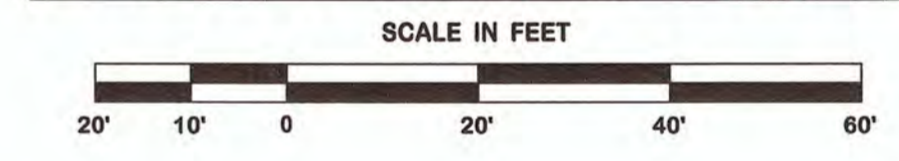
CONCEPT PLANT SCHEDULE BUILDING | 4 AND 5

	PARKING AREA TREE 3" Caliper Min. (Mature Height - 50') Acer rubrum / Red Maple Liriodendron tulipifera / Tulip Tree Taxodium distichum / Bald Cypress	9
	EXISTING TREES	1
	LARGE BUFFER TREES 3" Caliper Min. (Mature Height - 50') Quercus falcata / Southern Red Oak Quercus virginiana / Southern Live Oak Quercus virginiana "High Rise" / High Rise Live Oak	2
	ENTRY PLANTING 1 Azalea Encore "Autumn Twist" TM / Autumn Twist Azalea Rosa Drift / Drift Roses	127
	ENTRY PLANTING 2 Miscanthus sinensis "Gracillimus" / Maiden Grass Miscanthus sinensis "Purpureascens" / Flame Grass Muhlenbergia capillaris / Pink Muhly	146
	ENTRY PLANTING 3 Dietsia bicolor "Moraea" / Bicolor Iris Ilex cornuta "Carissa" / Carissa Holly Ilex vomitoria "Nana" / Dwarf Yaupon Iris fulva / Iris Loropetalum chinense rubrum "Pixie" / Pixie Loropetalum Raphiolepis indica / Indian Hawthorn	174
	ENTRY PLANTING 4 Dietsia bicolor / Fortnight Lily Iris louisiana "Margaret Hunter" / Blue Swamp Iris	341
	TURF Cynodon dactylon / Bermuda Grass	19,999 sf

TYPICAL BUILDING LANDSCAPE PLAN



CONCEPT CLUBHOUSE LANDSCAPE PLAN



CONCEPT PLANT SCHEDULE CLUBHOUSE

	PARKING AREA TREE 3" Caliper Min. Acer rubrum / Red Maple Liriodendron tulipifera / Tulip Tree Taxodium distichum / Bald Cypress	3
	ENTRY PLANTING 1 Azalea Encore "Autumn Twist" TM / Autumn Twist Azalea Rosa Drift / Drift Roses	121
	ENTRY PLANTING 2 Miscanthus sinensis "Gracillimus" / Maiden Grass Miscanthus sinensis "Purpureascens" / Flame Grass Muhlenbergia capillaris / Pink Muhly	85
	ENTRY PLANTING 3 Dietsia bicolor "Moraea" / Bicolor Iris Ilex cornuta "Carissa" / Carissa Holly Ilex vomitoria "Nana" / Dwarf Yaupon Iris fulva / Iris Loropetalum chinense rubrum "Pixie" / Pixie Loropetalum Raphiolepis indica / Indian Hawthorn	52
	ENTRY PLANTING 4 Dietsia bicolor / Fortnight Lily Iris louisiana "Margaret Hunter" / Blue Swamp Iris	157
	TURF Cynodon dactylon / Bermuda Grass	7,213 sf

REVISION	BY

DDG
 DUPLANTIS DESIGN GROUP, PC
 4307 BLUEBONNET BOULEVARD, SUITE A
 BATON ROUGE, LA 70809
 WWW.DDGP.COM
 PHONE: 225-751-4495 | FAX: 225-751-4495
 THIBODAUX | COVINGTON | HOUSTON | BATON ROUGE | HOUMA | ATLANTA

SIGNATURE:
 DATE: 7-10-14
 STAMP:

TOWN CENTER PARKWAY - NS
 SLIDELL, LA.
 PARISH/COUNTY
 FOR CONTINENTAL PROPERTIES COMPANY, INC.

DRAWN: JPL
 CHECKED: CDD
 ISSUED DATE: 7-10-14
 ISSUED FOR CITY REVIEW
 PROJECT NO. 14-248
 FILE 14-248 Concept Landscape Plan L-1 J Rev2_recover
 SHEET L-1.2

PROGRESS SET - FOR REVIEW ONLY
 Issued 7-10-14
 These documents are for Design Review and not intended for Construction, Bidding, Recordation, Conveyance, Sales, or as the Basis for Issuance of a Permit. They were prepared by, or under the supervision of:
 Landscape Architect Jason Landrem # 1-242
 Duplantis Design Group, P.C.