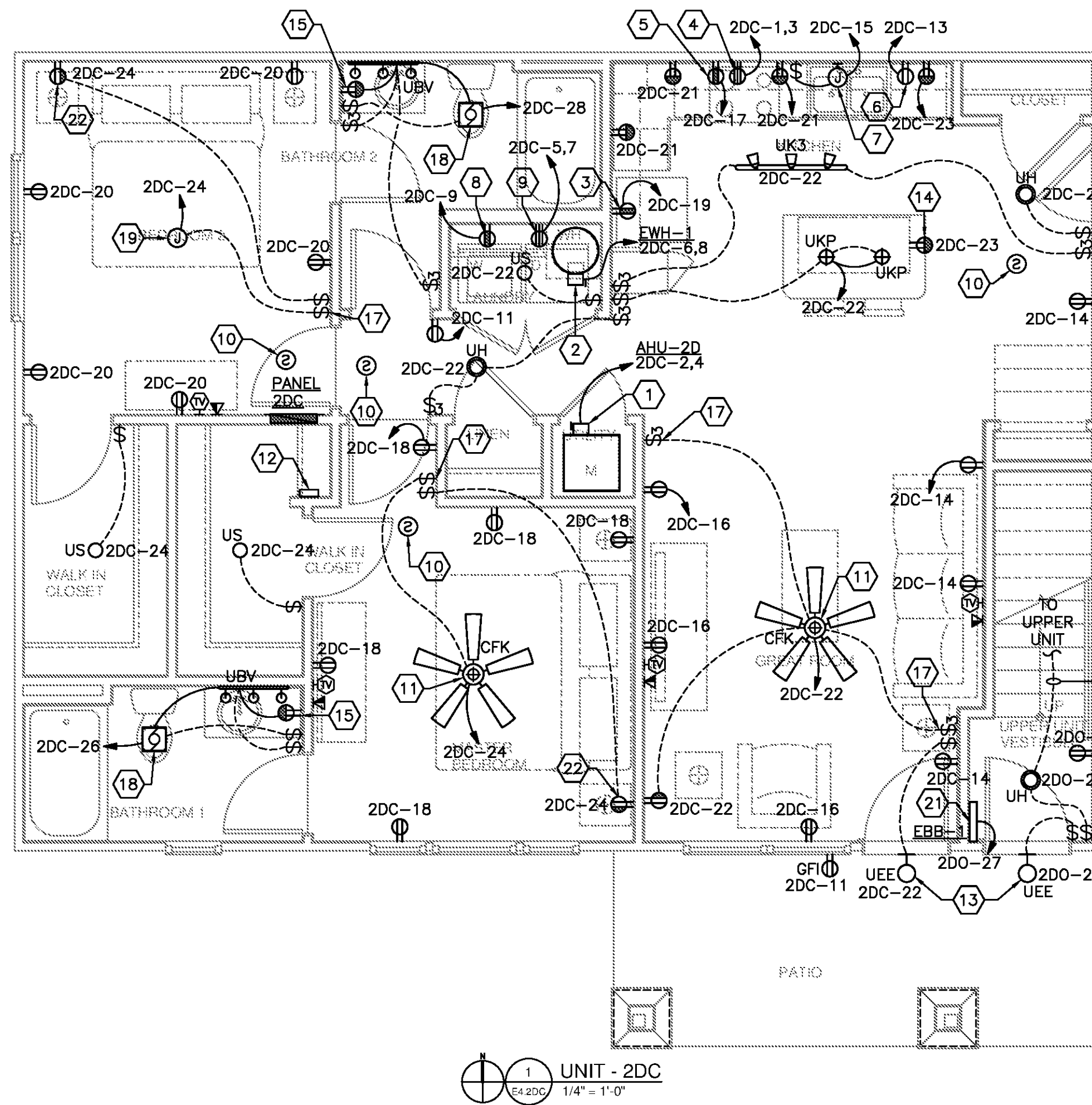
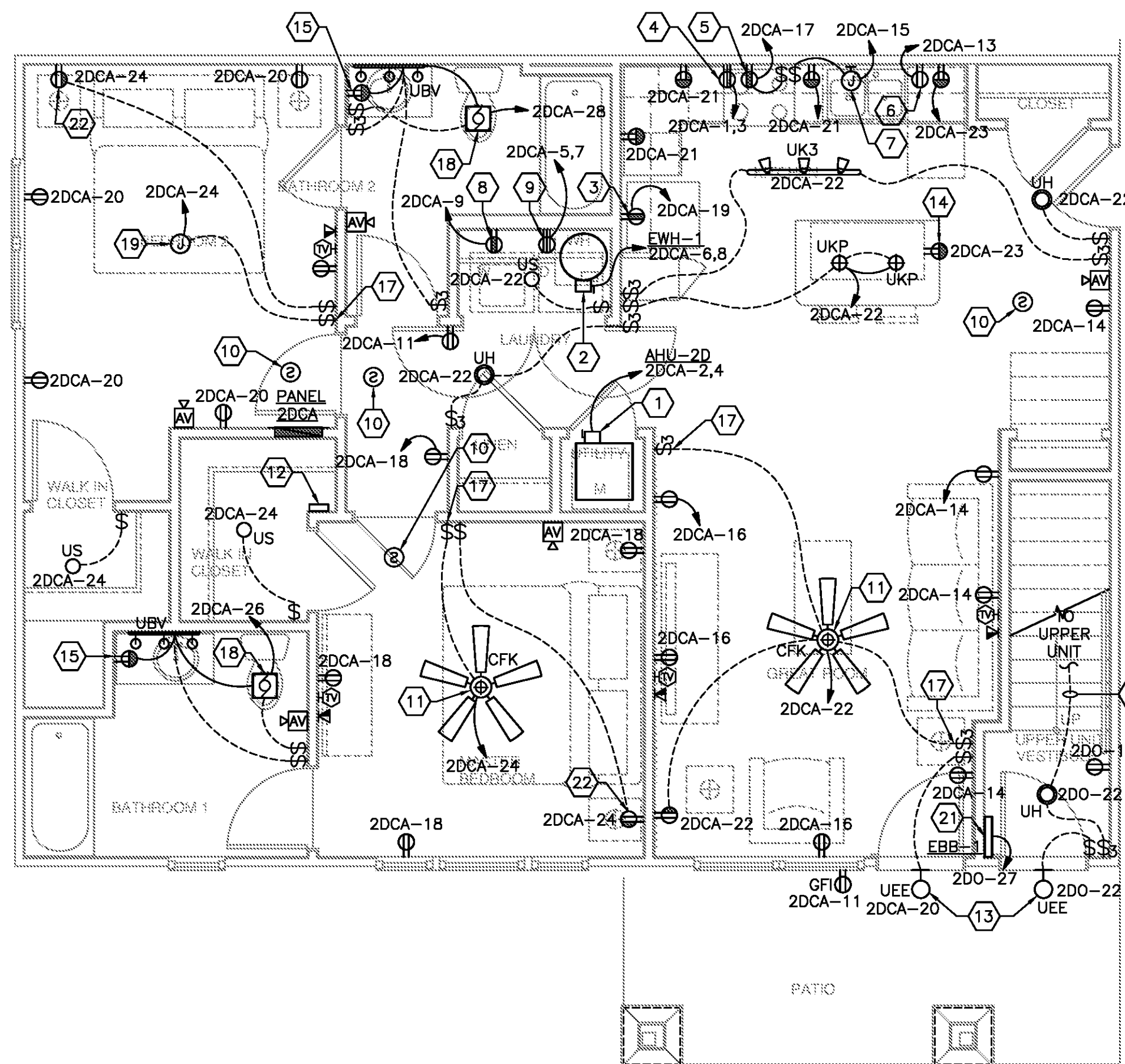


**DWELLING LOAD CALCULATION**

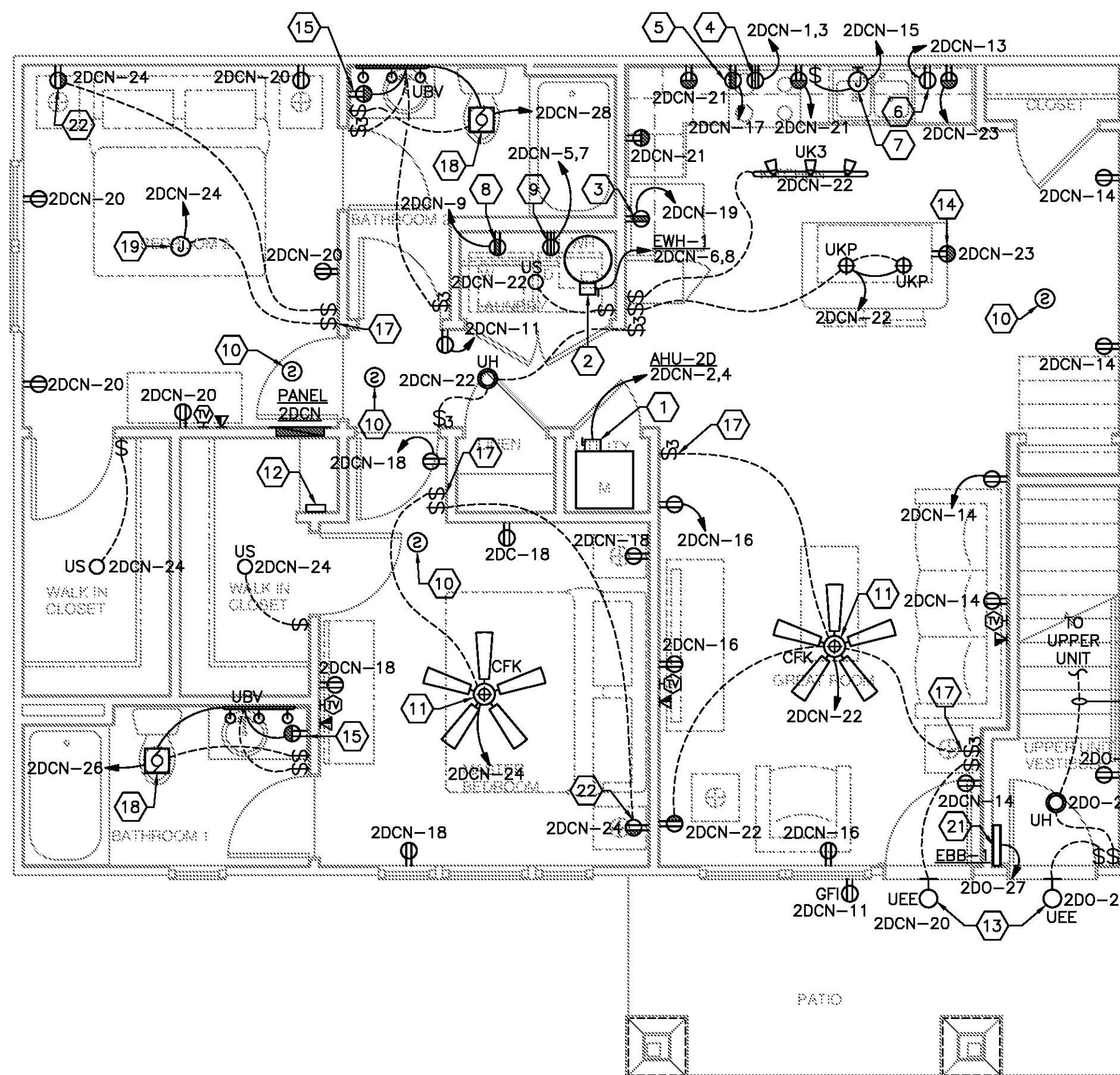
<b>Unit 2DC</b>	SQ FT =	1062
<b>GENERAL LOAD</b>		
GENERAL LIGHTING AND RECEPTACLE	3 VA PER SQ FT	3186 VA
SMALL APPLIANCE / LAUNDRY	3 1500VA EACH	4500 VA
DRYER		5600 VA
WATER HEATER		4500 VA
ELECTRIC RANGE		9600
	<b>SUBTOTAL</b>	<b>27386 VA</b>
	FIRST 3KVA @ 100%	3000 VA
	REMAINDER @ 40%	9754 VA
	<b>SUBTOTAL</b>	<b>12754 VA</b>
	HVAC @100%	8500 VA
	<b>TOTAL</b>	<b>19254 VA</b>
	<b>TOTAL/240V =</b>	<b>80 AMPS</b>



1 UNIT - 2DC  
1/4" = 1'-0"



2 UNIT - 2DCA  
1/4" = 1'-0"



3 UNIT - 2DCN (NO GARAGE)  
1/4" = 1'-0"

**GENERAL NOTES**

ELECTRICAL OUTLETS OR BOXES LOCATED ON OPPOSITE SIDES OF RATED WALLS OR PARTITIONS SHALL MEET ONE OF THE FOLLOWING CRITERIA:

1. BOXES SHALL BE SEPARATED BY A HORIZONTAL DISTANCE OF NOT LESS THAN 24".
2. BOXES SHALL BE SURROUNDED ON 5 SIDES WITH FIRE RATED GYPSUM BOARD TO MAINTAIN THE FIRE RATING OF THE WALL.
3. BACK OF BOXES SHALL BE WRAPPED IN FIRE RESISTANT PUTTY SIMILAR TO SPEC-SEAL FIRE RATED PUTTY PADS.
4. PROVIDE 2 HOUR RATED BACK BOXES AND OFFSET BY THE WIDTH OF THE BOX.

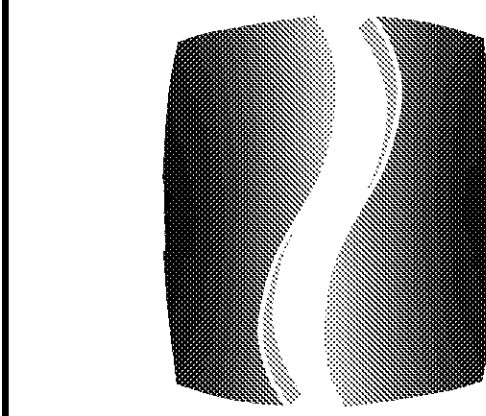
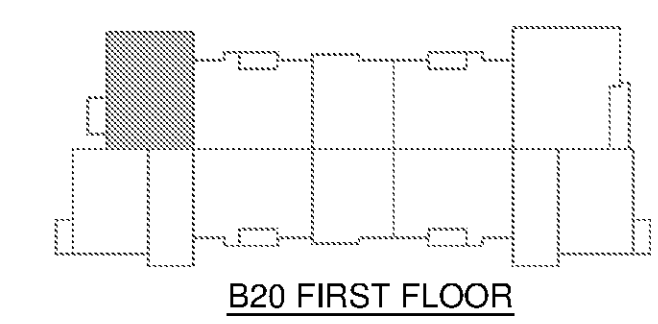
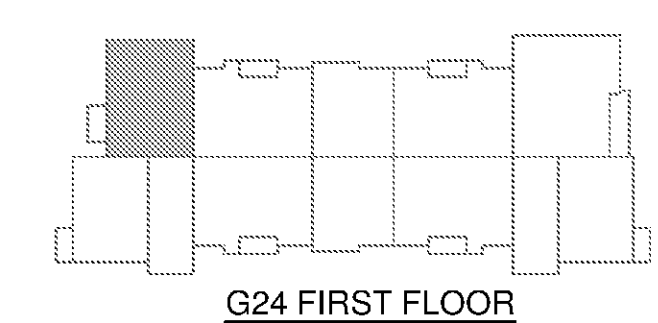
**KEYED NOTES**

- 1 AIR HANDLING UNIT CONNECTION.
- 2 WATER HEATER CONNECTION LOCATED ABOVE DRYER.
- 3 REFRIGERATOR CONNECTION MOUNT @ 60" AFF.
- 4 RANGE CONNECTION.
- 5 MICROWAVE/HOOD CONNECTION. MOUNT @ 76" AFF.
- 6 DISHWASHER CONNECTION.
- 7 GARBAGE DISPOSAL CONNECTION
- 8 WASHER CONNECTION. MOUNT @ 48" AFF.
- 9 DRYER CONNECTION. MOUNT @ 48" AFF. PROVIDE 4 WIRE RECEPTACLE.
- 10 CONNECT SMOKE DETECTOR AND COMBINATION CARBON MONOXIDE SENSOR/SMOKE DETECTOR AHEAD OF ALL SWITCHING AND GFI DEVICES. MAINTAIN 36" CLEARANCE FROM HVAC SUPPLY GRILLES. TIE ALL DETECTORS TOGETHER SO THAT AN ALARM IN ANY DETECTOR WILL CAUSE ALL DETECTORS IN THAT UNIT TO SOUND. PROVIDE ADDRESSABLE SMOKE DETECTOR WITH SOUNDER BASE TO PROVIDE NFPA 72 SOUND PRESSURE LEVEL.
- 11 ELECTRICAL CONTRACTOR TO PROVIDE AND INSTALL CEILING FAN. SEE LIGHT FIXTURE SCHEDULE.
- 12 CABINET FOR COLLECTION OF TELEPHONE, DATA AND TELEVISION WIRING FROM OUTLETS WITHIN THE UNIT. MOUNT AT 8'-0" A.F.F.
- 13 CONNECT VIA SWITCH TO APPROPRIATE UNIT.
- 14 MOUNT BROWN RECEPTACLE WITH BROWN PLATE 8" BELOW TOP OF COUNTER TO BOTTOM.
- 15 GFI MOUNTED 8" ABOVE COUNTER IN BATHROOM.
- 16 CONNECT ALL DEVICES IN THIS FOYER TO ASSOCIATED 2ND FLOOR UNIT.
- 17 PROVIDE SWITCH FOR CEILING FAN CONTROL. PROVIDE FOR 3-WAY OR 4-WAY CONTROL OF LIGHT WHERE APPLICABLE.
- 18 EXHAUST FAN IN BATHROOM. CONNECT TO LIGHTING CIRCUIT.
- 19 PROVIDE FAN RATED BOX WITH BLANK COVER FOR FUTURE FAN OR LIGHTING FIXTURE. PROVIDE CEILING FAN TYPE "CF" IN CONCIERGE UNITS OR AS NOTED ON ARCHITECTURAL DRAWINGS.
- 21 PROVIDE POWER CONNECTION TO ELECTRIC BASEBOARD HEATER INSTALLED IN VESTIBULE BY DIV 15. POWER FROM RESPECTIVE TENANT PANEL.
- 22 CONNECT THE BOTTOM HALF OF OUTLET TO SWITCH.

ALL ELECTRICAL DESIGN AND INSTALLATION SHALL COMPLY WITH 2011 NEC.

ALL GENERAL RECEPTACLES REQUIRED BY NEC 210.52 SHALL BE TAMPER-RESISTANT.

UPGRADED LIGHT FIXTURES "UCK" AND "UCP" TO BE INSTALLED IN ALL CONCIERGE UNITS OR AS NOTED ON ARCHITECTURAL DRAWINGS.



**PHILLIPS**

Phone 770.394.1616 Fax 770.394.1314

CONSULTANT



SEAL

**ISSUE & REVISION RECORD**

#	DATE	DESCRIPTION
	07/07/14	BID SET

This document is the property of Phillips Partnership, PC and is intended as an instrument of service and is not to be used for any other project without the prior written consent of Phillips Partnership, PC.

PROJECT

**SPRINGS AT FREMAUX TOWN CENTER**  
SLIDELL, LA

CLIENT

CONTINENTAL PROPERTIES  
CONTINENTAL 294 FUND LLC  
1134 N8875 EXECUTIVE PARKWAY  
MENOMONEE FALLS, WI 53051  
262.502.5500 \* FAX 262.502.5522

PHILLIPS JOB NUMBER 1333104

ISSUE DATE 07/07/14

DRAWN BY/CHECKED BY KMK/JDP

DRAWING TITLE

UNIT 2DC:  
POWER AND LIGHTING PLANS

SHEET NUMBER

**E4.2DC**

NORTH TERRACES  
400 PERIMETER CENTER TERRACE  
SUITE 650  
ATLANTA, GEORGIA 30346