

PHILLIPS

Phone 770.394.1616 Fax 770.394.1314

CONSULTANT



PHILLIPS
STRUCTURAL STUDIOS

400 PERIMETER CENTER TERRACE
SUITE 650 - NORTH
ATLANTA, GA 30346
770.394.1616

SEAL

ISSUE & REVISION RECORD

#	DATE	DESCRIPTION
	07/07/14	BID SET

This document is the property of Phillips Partnership, PC and is intended for use only on the project or projects indicated. All rights reserved. This document may not be reproduced without the prior written consent of Phillips Partnership, PC.

PROJECT

SPRINGS AT
FREMAUX
TOWN CENTER
SLIDELL, LA

CLIENT

CONTINENTAL PROPERTIES
CONTINENTAL 294 FUND LLC
W134 N0875 EXECUTIVE PARKWAY
MENDOTA, WI 53051
262.502.5500 * FAX 262.502.5522

PHILLIPS JOB NUMBER 1333104

ISSUE DATE 07/07/14

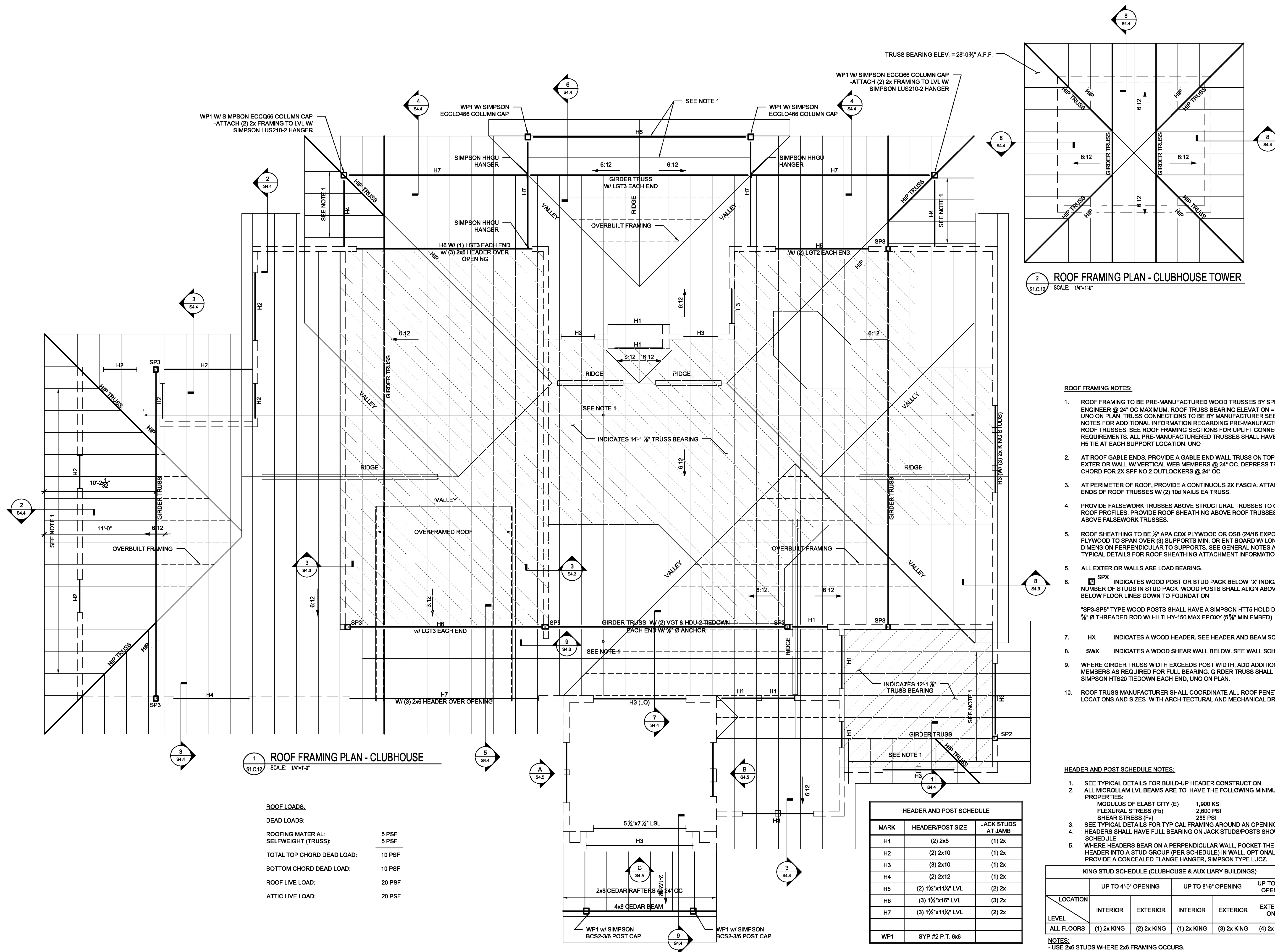
DRAWN BY/CHECKED BY IS/ITV

DRAWING TITLE
ROOF FRAMING PLAN - CLUBHOUSE

SHEET NUMBER

S1.C.12

NORTH TERRACES
400 PERIMETER CENTER TERRACE
SUITE 650
ATLANTA, GEORGIA 30346



2 ROOF FRAMING PLAN - CLUBHOUSE TOWER
SCALE: 1/4"=1'-0"

1 ROOF FRAMING PLAN - CLUBHOUSE
SCALE: 1/4"=1'-0"

ROOF LOADS:

DEAD LOADS:
ROOFING MATERIAL: 5 PSF
SELFWEIGHT (TRUSS): 5 PSF

TOTAL TOP CHORD DEAD LOAD: 10 PSF

BOTTOM CHORD DEAD LOAD: 10 PSF

ROOF LIVE LOAD: 20 PSF

ATTIC LIVE LOAD: 20 PSF

HEADER AND POST SCHEDULE		
MARK	HEADER/POST SIZE	JACK STUDS AT JAMB
H1	(2) 2x8	(1) 2x
H2	(2) 2x10	(1) 2x
H3	(3) 2x10	(1) 2x
H4	(2) 2x12	(1) 2x
H5	(2) 1 1/2"x11 1/2" LVL	(2) 2x
H6	(3) 1 1/2"x16" LVL	(3) 2x
H7	(3) 1 1/2"x11 1/2" LVL	(2) 2x
WP1	SYP #2 P.T. 6x6	-

- ROOF FRAMING NOTES:**
- ROOF FRAMING TO BE PRE-MANUFACTURED WOOD TRUSSES BY SPECIALTY ENGINEER @ 24" OC MAXIMUM. ROOF TRUSS BEARING ELEVATION = 10'-1 1/2" UNO ON PLAN. TRUSS CONNECTIONS TO BE BY MANUFACTURER SEE GENERAL NOTES FOR ADDITIONAL INFORMATION REGARDING PRE-MANUFACTURED ROOF TRUSSES. SEE ROOF FRAMING SECTIONS FOR UPLIFT CONNECTION REQUIREMENTS. ALL PRE-MANUFACTURED TRUSSES SHALL HAVE SIMPSON H5 TIE AT EACH SUPPORT LOCATION. UNO
 - AT ROOF GABLE ENDS, PROVIDE A GABLE END WALL TRUSS ON TOP OF EXTERIOR WALL W/ VERTICAL WEB MEMBERS @ 24" OC. DEPRESS TRUSS TOP CHORD FOR 2X SPF NO.2 OUTLOOKERS @ 24" OC.
 - AT PERIMETER OF ROOF, PROVIDE A CONTINUOUS 2X FASCIA ATTACH TO ENDS OF ROOF TRUSSES W/ (2) 10d NAILS EA TRUSS.
 - PROVIDE FALSEWORK TRUSSES ABOVE STRUCTURAL TRUSSES TO CREATE ROOF PROFILES. PROVIDE ROOF SHEATHING ABOVE ROOF TRUSSES AND ABOVE FALSEWORK TRUSSES.
 - ROOF SHEATHING TO BE 1/2" APA CDX PLYWOOD OR OSB (24/16 EXPOSURE 1). PLYWOOD TO SPAN OVER (3) SUPPORTS MIN. ORIENT BOARD W/ LONG DIMENSION PERPENDICULAR TO SUPPORTS. SEE GENERAL NOTES AND TYPICAL DETAILS FOR ROOF SHEATHING ATTACHMENT INFORMATION.
 - ALL EXTERIOR WALLS ARE LOAD BEARING.
 - SPX INDICATES WOOD POST OR STUD PACK BELOW. X' INDICATES MIN NUMBER OF STUDS IN STUD PACK. WOOD POSTS SHALL ALIGN ABOVE AND BELOW FLOOR LINES TO FOUNDATION.
 - SP3-SP5 TYPE WOOD POSTS SHALL HAVE A SIMPSON HTTS HOLD DOWN W/ 1/2" THREADED ROD W/ HILTI HY-150 MAX EPOXY (5/8" MIN EMBED).
 - HX INDICATES A WOOD HEADER. SEE HEADER AND BEAM SCHEDULE.
 - SWX INDICATES A WOOD SHEAR WALL BELOW. SEE WALL SCHEDULE.
 - WHERE GIRDER TRUSS WIDTH EXCEEDS POST WIDTH, ADD ADDITIONAL 2X MEMBERS AS REQUIRED FOR FULL BEARING. GIRDER TRUSS SHALL HAVE ONE SIMPSON HTS20 TIEDOWN EACH END, UNO ON PLAN.
 - ROOF TRUSS MANUFACTURER SHALL COORDINATE ALL ROOF PENETRATION LOCATIONS AND SIZES WITH ARCHITECTURAL AND MECHANICAL DRAWINGS.

- HEADER AND POST SCHEDULE NOTES:**
- SEE TYPICAL DETAILS FOR BUILD-UP HEADER CONSTRUCTION.
 - ALL MICRO LAM LVL BEAMS ARE TO HAVE THE FOLLOWING MINIMUM PROPERTIES:
MODULUS OF ELASTICITY (E) 1,900 KSI
FLEXURAL STRESS (Fb) 2,600 PSI
SHEAR STRESS (Fv) 285 PSI
 - SEE TYPICAL DETAILS FOR TYPICAL FRAMING AROUND AN OPENING.
 - HEADERS SHALL HAVE FULL BEARING ON JACK STUDS/POSTS SHOWN IN SCHEDULE.
 - WHERE HEADERS BEAR ON A PERPENDICULAR WALL, POCKET THE HEADER INTO A STUD GROUP (PER SCHEDULE) IN WALL. OPTIONAL: PROVIDE A CONCEALED FLANGE HANGER, SIMPSON TYPE LUCZ.

LOCATION	UP TO 4'-0" OPENING		UP TO 8'-6" OPENING		UP TO 19'-0" OPENING
	INTERIOR	EXTERIOR	INTERIOR	EXTERIOR	EXTERIOR ONLY
ALL FLOORS	(1) 2x KING	(2) 2x KING	(1) 2x KING	(3) 2x KING	(4) 2x KING

NOTES:
-USE 2x6 STUDS WHERE 2x6 FRAMING OCCURS.