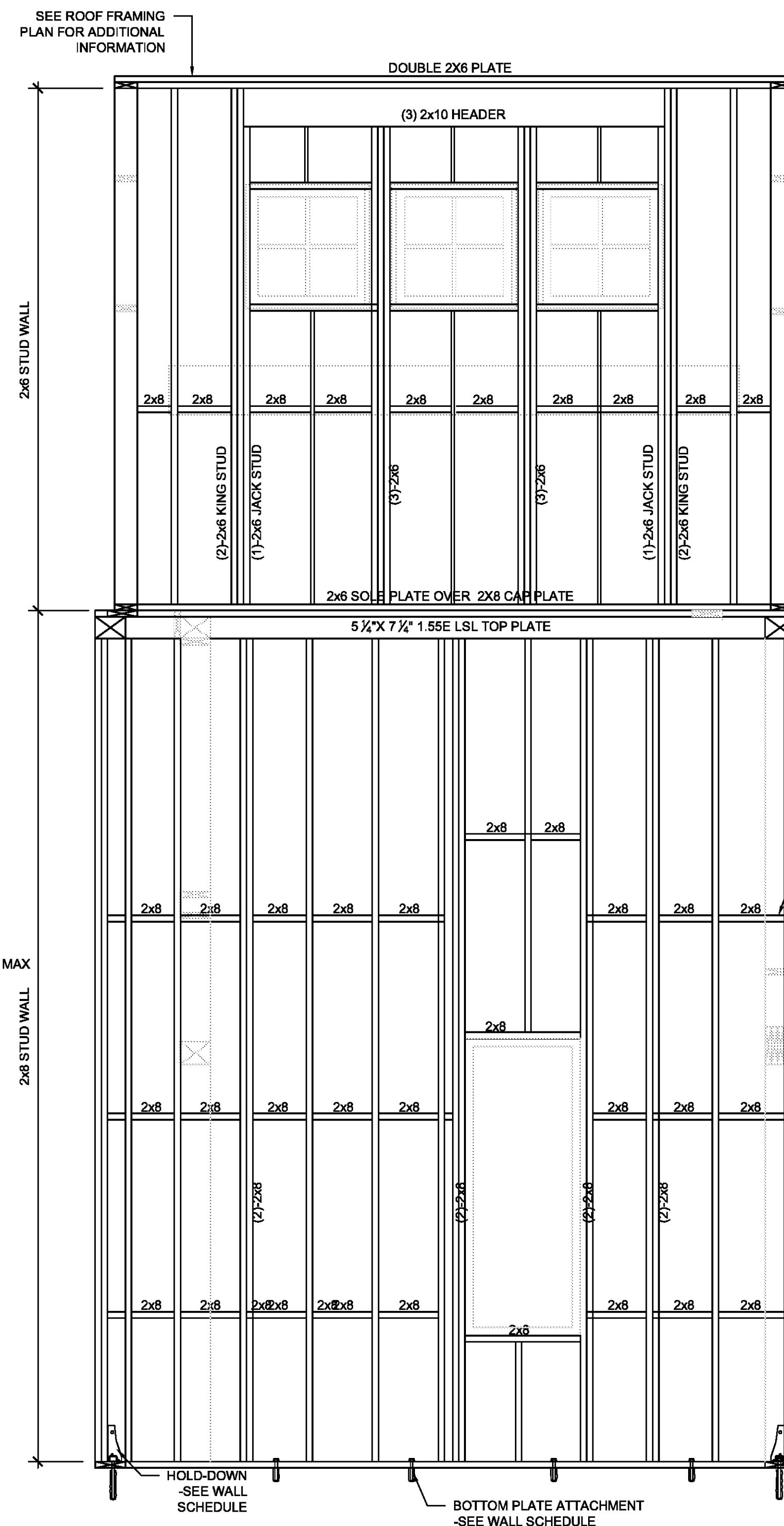
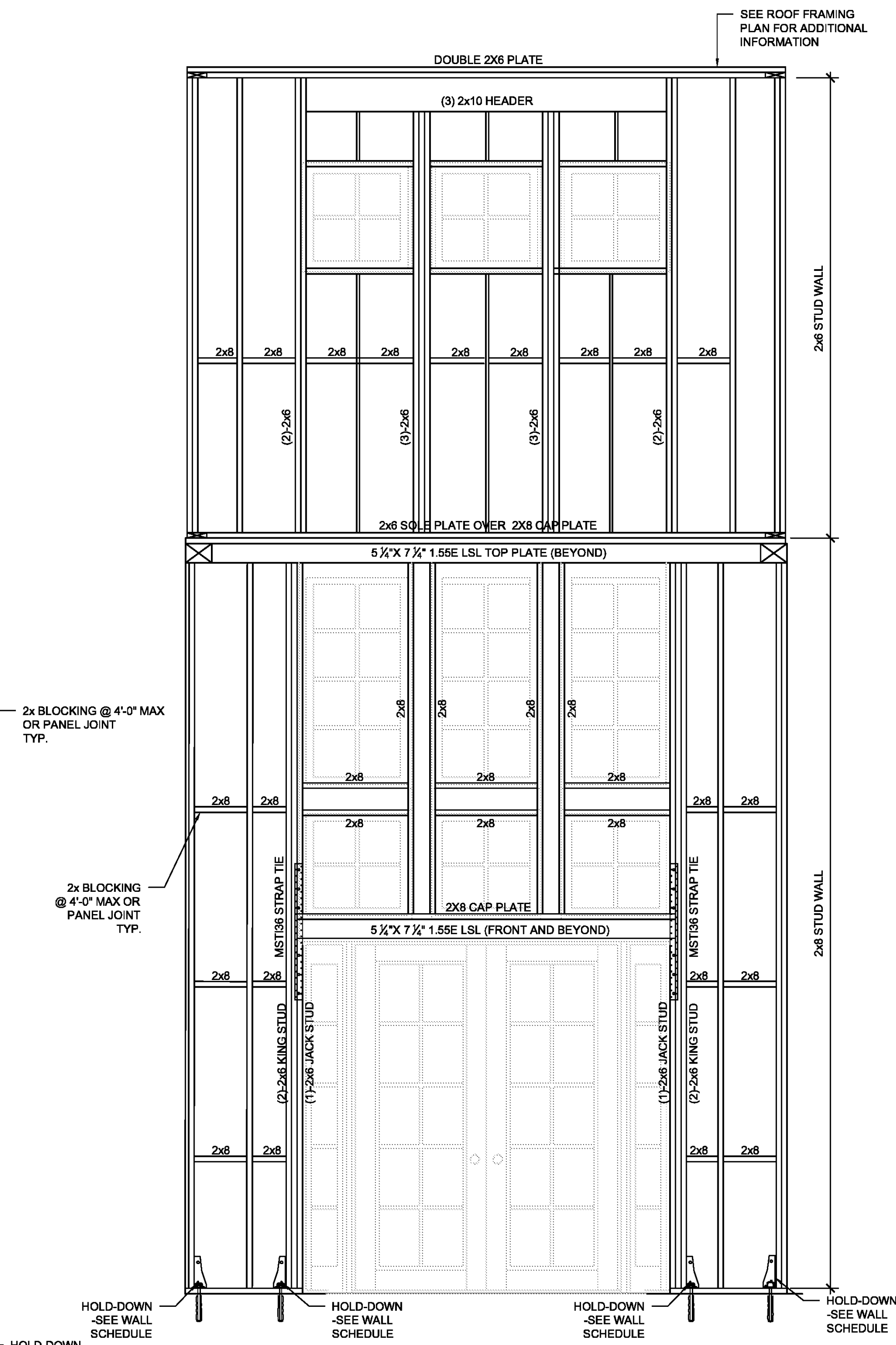


A LEFT TOWER FRAMING ELEVATION
SCALE: 1/2" = 1'-0"

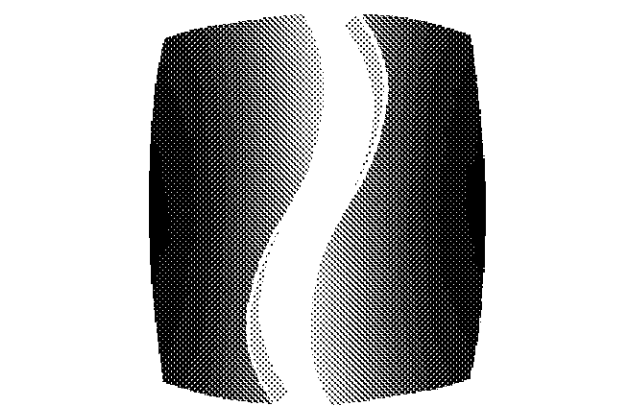


B RIGHT TOWER FRAMING ELEVATION
SCALE: 1/2" = 1'-0"



C FRONT TOWER FRAMING ELEVATION
SCALE: 1/2" = 1'-0"

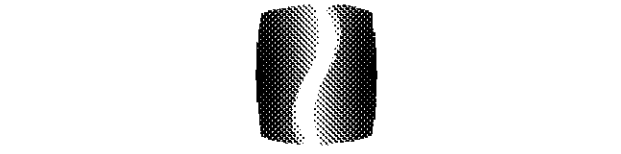
- TOWER FRAMING NOTES:**
- EXTERIOR SHEATHING SHALL BE 7/8" OSB OR PLYWOOD w/ 8d NAILS @ 6" O.C. AT EDGES AND 12" THE FIELD AT WALL ELEVATIONS A/S4.5 AND B/S4.5 AND 8d NAILS @ 4" O.C. AT EDGES AND 6" O.C. IN THE FIELD FOR WALL ELEVATION C/S4.5
 - FRAMING SHALL BE 2x6 #8 SPF STUD OR BETTER @ 16" O.C. MAX. SEE TYPICAL DETAIL SHEET S4.1 FOR STUD BUILD-UP DETAILS.
 - LSL INDICATES LAMINATED STRAND LUMBER AND SHALL HAVE THE FOLLOWING MINIMUM PROPERTIES:
F_b: BENDING STRESS: 2,325 PSI
E: MODULUS OF ELASTICITY: 1,550 KSI
 - SILL PLATE SHALL BE FACE NAILED TO CAP PLATE OR HEADER w/ 2-16d NAILS @ 12" O.C.
 - 2x6 P.T. BOTTOM SILL PLATE SHALL BE SYP #2, ANCHORED TO THE FOUNDATION WITH 1/2" HILTY HY-150MAX (7" MIN. EMBED) @ 32" O.C. MAX.
 - WALL TOP PLATE SHALL BE 2x8 SYP #2 OVER 5 1/2"x7 1/2" LSL ON 4 SIDES.
 - COORDINATE ALL OPENING DIMENSIONS WITH ARCHITECTURAL DRAWINGS.



PHILLIPS

Phone 770.394.1616 Fax 770.394.1314

CONSULTANT



400 PERIMETER CENTER TERRACE
SUITE 650 - NORTH
ATLANTA, GA 30346
770.394.1616

SEAL

ISSUE & REVISION RECORD

#	DATE	DESCRIPTION
07/07/14		BID SET

This document is the property of Phillips Partnership, PC and is intended for use on the project as indicated herein. All rights reserved. This document may not be reproduced without the prior written consent of Phillips Partnership, PC.

PROJECT

SPRINGS AT FREMAUX TOWN CENTER
SLIDELL, LA

CLIENT

CONTINENTAL PROPERTIES
CONTINENTAL 294 FUND LLC
W134, N0875 EXECUTIVE PARKWAY
MENOMONIE FALLS, WI 53051
262.502.5500 * FAX 262.502.5522

PHILLIPS JOB NUMBER 1333104

ISSUE DATE 07/07/14

DRAWN BY/CHECKED BY IS/TV

DRAWING TITLE

TOWER FRAMING

SHEET NUMBER

S4.5

NORTH TERRACES
400 PERIMETER CENTER TERRACE
SUITE 650
ATLANTA, GEORGIA 30346