



894 ROBERT BOULEVARD
SLIDELL, LOUISIANA 70458
PH. 985-643-2427
FAX 985-643-2691
PROTOL@ROTOLOCONSULTANTS.COM

**SPRINGS AT RIVER CHASE
CLUBHOUSE SWIMMING POOL**
1776 CONTINENTAL DRIVE COVINGTON, LOUISIANA 70433 - ST. TAMMANY PARISH

Copyright 2016 © Rotolo Consultants Inc.
These drawings or parts thereof, may not be reproduced in any form, by any method, for any purpose, without prior written consent from Rotolo Consultants Inc.
Contact: Rod Rotolo 985.643.2427
Project No: 81-1600-LA

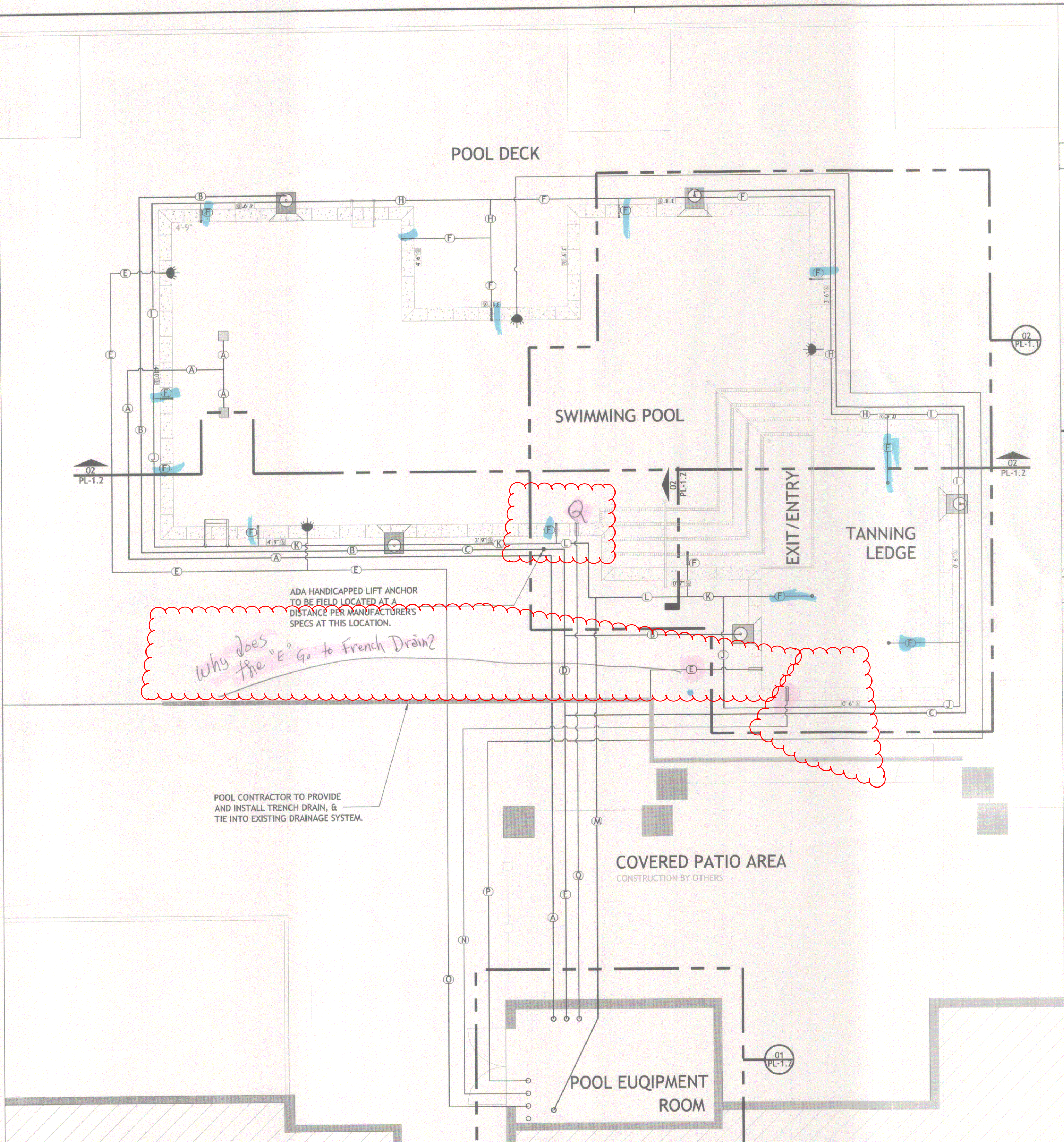
Revisions:		
No.	Date:	Description:

Date: 1/11/2016
Drawn: T.J.H.
Checked: K.D.
Sheet Title:

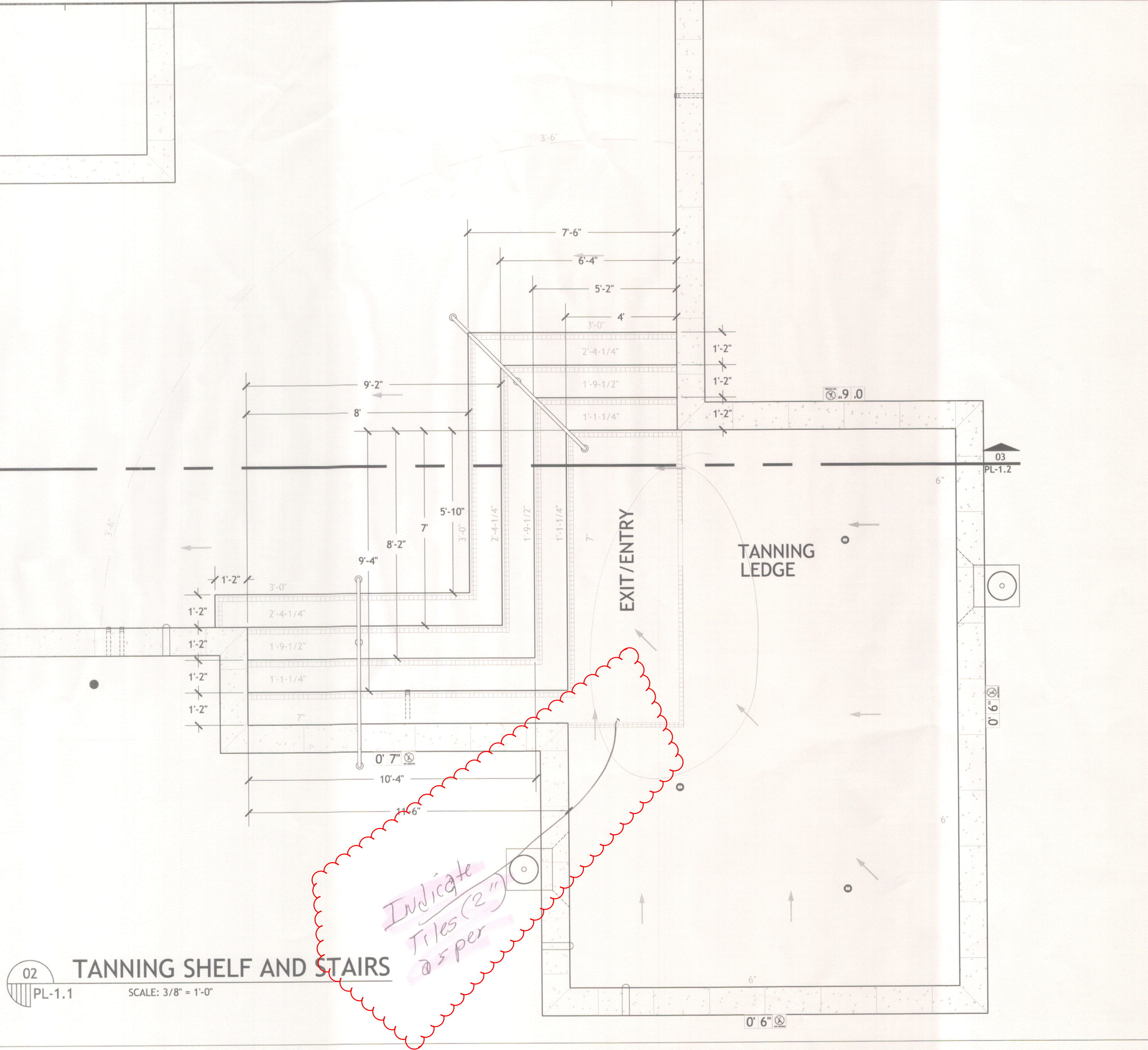
**PIPING LAYOUT
AND
TANNING SHELF
PLAN
BLOW-UP**

Drawing No.

PL-1.1



01 POOL LAYOUT PLAN
PL-1.1 SCALE: 3/16" = 1'-0"



02 TANNING SHELF AND STAIRS
PL-1.1 SCALE: 3/8" = 1'-0"

SYMBOL LEGEND

- SKIMMER (TO BE VGB COMPLIANT AND NSF CERTIFIED, W/ EQUALIZATION LINE)
- DEPTH MARKER TILE (SEE DETAILS & NOTES ON SHEET PL-1.3 / DETAIL 02)
- ADJUSTABLE DIRECTIONAL - EYEBALL INLET (LOCATED 15" MINIMUM BELOW WATER LEVEL)
- UNDERWATER POOL LIGHT
- LADDER WITH RUNGS AND GRAB RAILS
- ADJUSTABLE FLOOR RETURN INLET ASSEMBLY
- FRESH WATER SUPPLY / SENSOR LINE
- HAND RAIL
- MAIN DRAIN SLUMP AND GRATE ASSEMBLY WITH DARK CONTRASTING RIM (GRATE AND SLUMP TO BE VGB COMPLIANT AND NSF 50 CERTIFIED)

PIPE IDENTIFICATION LEGEND

IDENTIFICATION	PLAN ID	SIZE	TYPE	FLOW RATE	VELOCITY
MAIN DRAIN SUCTION	A	3.0"	SCH 40 PVC	110 GPM	4.99 FPS
SKIMMER SUCTION	B	2.0"	SCH 40 PVC	22 GPM	2.25 FPS
SKIMMER SUCTION	C	2.0"	SCH 40 PVC	44 GPM	4.49 FPS
SKIMMER SUCTION	D	3.0"	SCH 40 PVC	66 GPM	3.00 FPS
SKIMMER SUCTION	E	3.0"	SCH 40 PVC	110 GPM	4.99 FPS
INLET RETURN	F	1.0"	SCH 40 PVC	9.16 GPM	1.66 FPS
NOT USED	G	N/A	N/A	N/A	N/A
INLET RETURN	H	1.5"	SCH 40 PVC	18.32 GPM	3.33 FPS
INLET RETURN	I	1.5"	SCH 40 PVC	27.48 GPM	4.99 FPS
INLET RETURN	J	2.0"	SCH 40 PVC	36.64 GPM	3.74 FPS
INLET RETURN	K	2.0"	SCH 40 PVC	45.80 GPM	4.68 FPS
INLET RETURN	L	3.0"	SCH 40 PVC	54.96 GPM	2.49 FPS
INLET RETURN	M	3.0"	SCH 40 PVC	110 GPM	4.99 FPS
WL SENSOR	N	1.0"	CONDUIT	N/A	N/A
LIGHTING CONDUIT	O	1.0"	CONDUIT	N/A	N/A
LIGHTING CONDUIT	P	1.0"	CONDUIT	N/A	N/A
FILL LINE	Q	3.0"	SCH 40 PVC	N/A	N/A