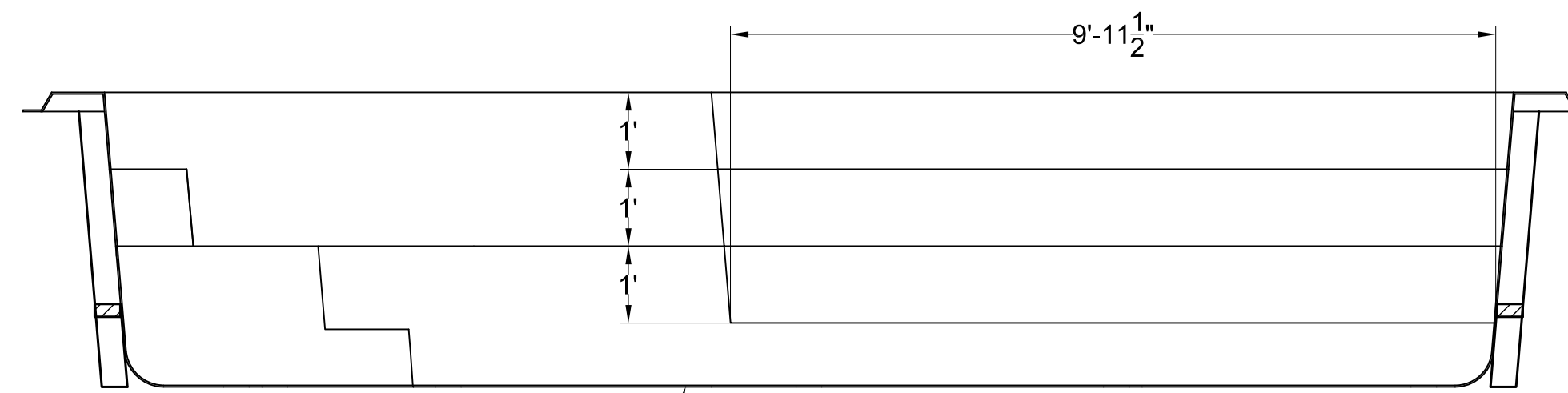
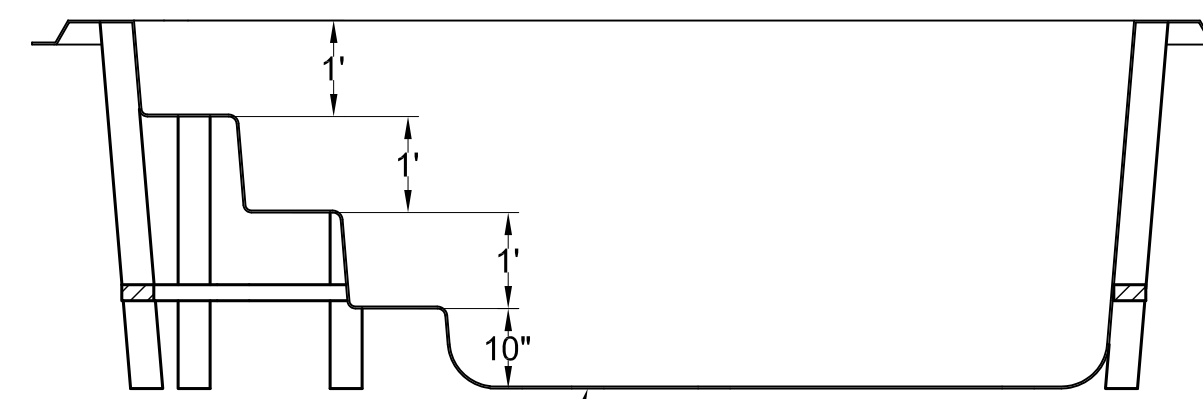


PLAN VIEW



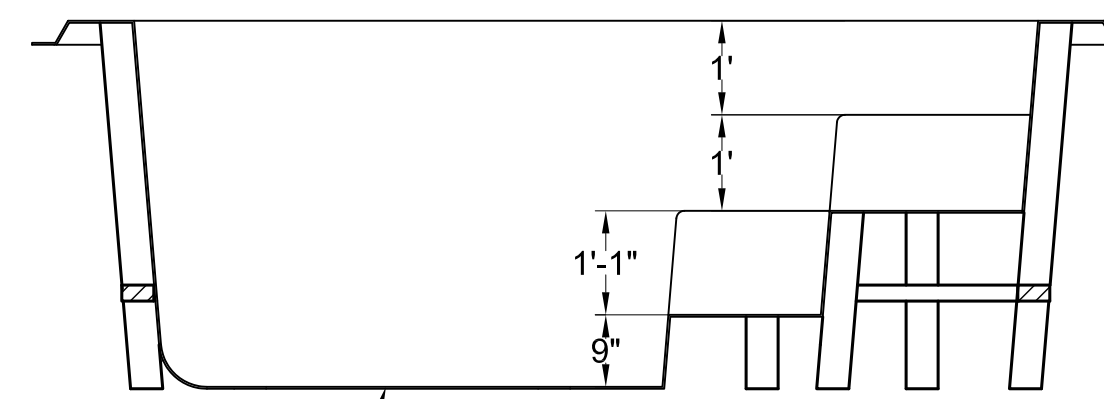
1/4" MINIMUM THICKNESS FIBERGLASS REINFORCED SHELL

SECTION A-A



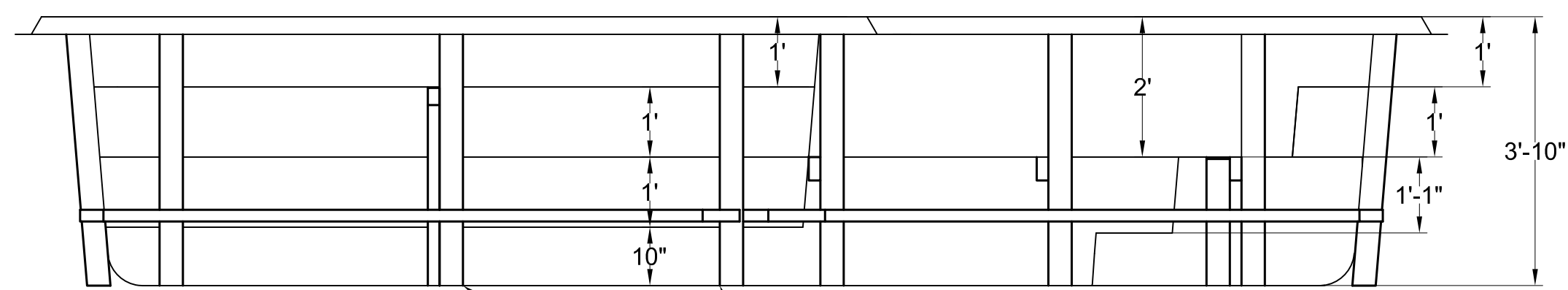
1/4" MINIMUM THICKNESS FIBERGLASS REINFORCED SHELL

SECTION B-B



1/4" MINIMUM THICKNESS FIBERGLASS REINFORCED SHELL

SECTION C-C

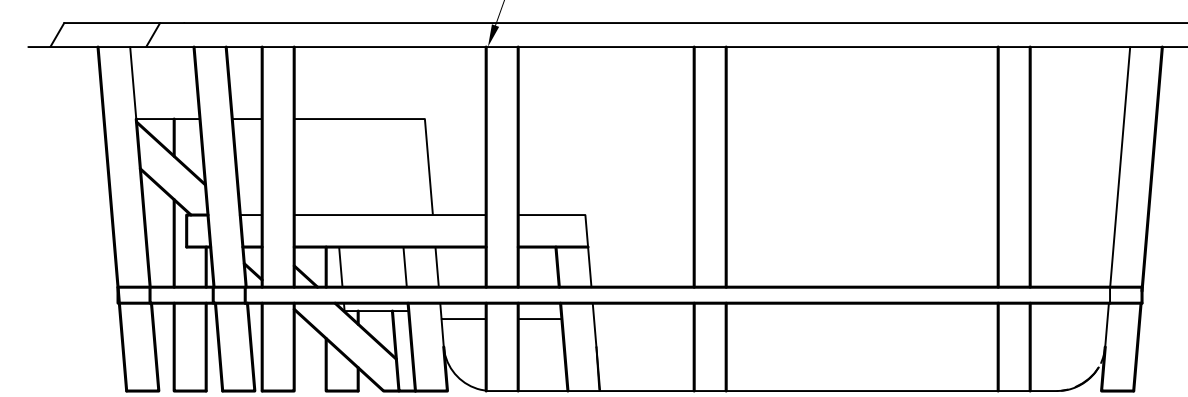


FLOOR MUST BE FULLY SUPPORTED FOR LIVE LOAD BASED ON WEIGHT OF WATER

REINFORCEMENT POSITIONING IS APPROXIMATE WITHIN 4"
ALL VERTICAL REINFORCEMENTS TO BE FULLY SUPPORTED
FOR LATERAL AND VERTICAL LOADS

ELEVATION FRONT

4X4 PRESSURE TREATED TYPICAL OF ALL REINFORCEMENTS
ALL VERTICAL REINFORCEMENTS MUST BE LATERALLY SUPPORTED



ELEVATION RIGHT SIDE

REV	DESCRIPTION	DATE	APRV
AECC/SAN JUAN POOLS			
<small>BY: AMERICAN ENVIRONMENTAL CONTAINER CORP. 2302 LASSO LANE LAKELAND, FLORIDA 33801 (863) 666-3020</small>			
<i>Date</i>	<i>Checked By</i>	<i>Job No.</i>	
01-05-17	KLB		
<i>Title</i>	SCOTTSDALE 01		<i>Sheet</i> 1 of 1