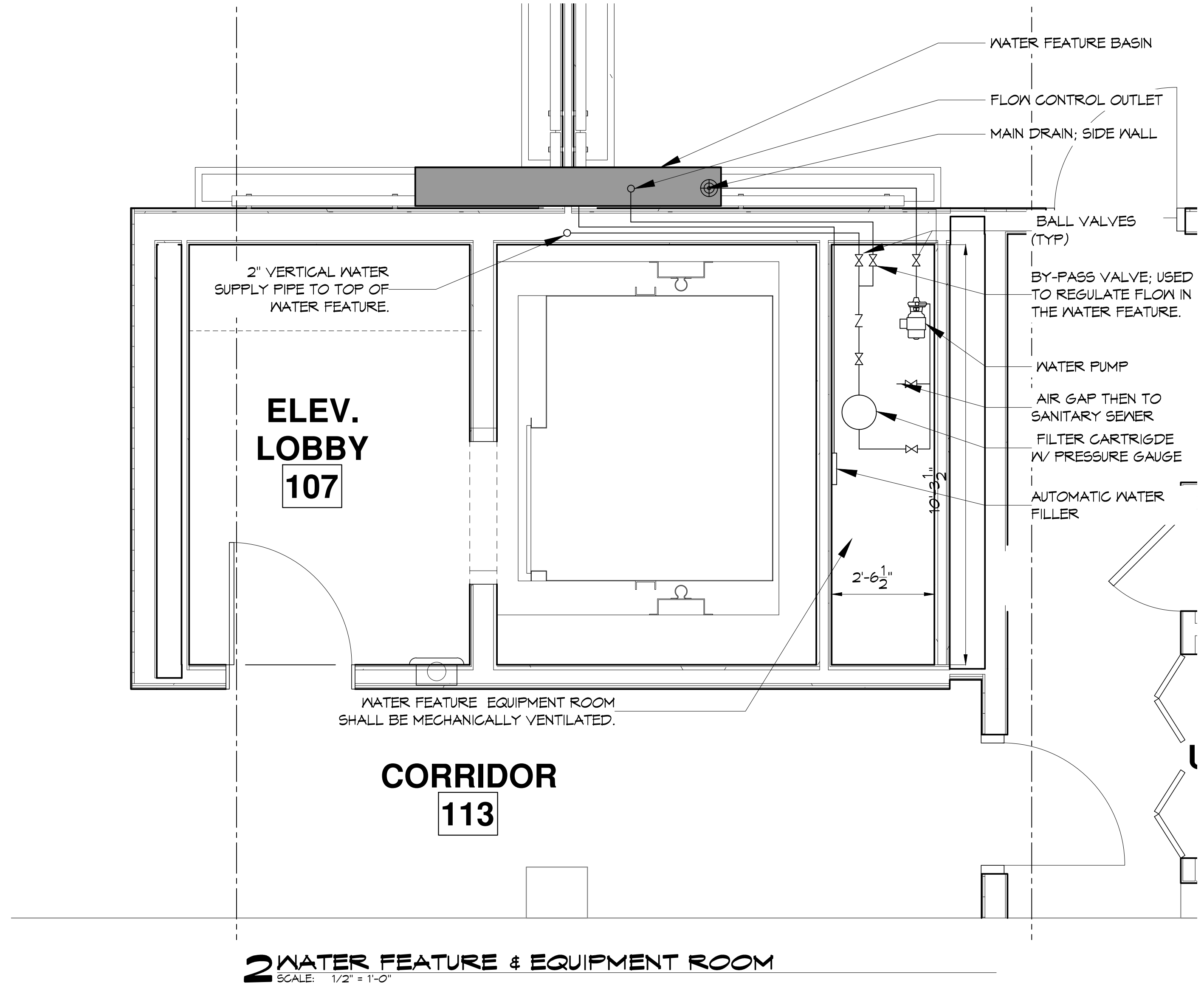
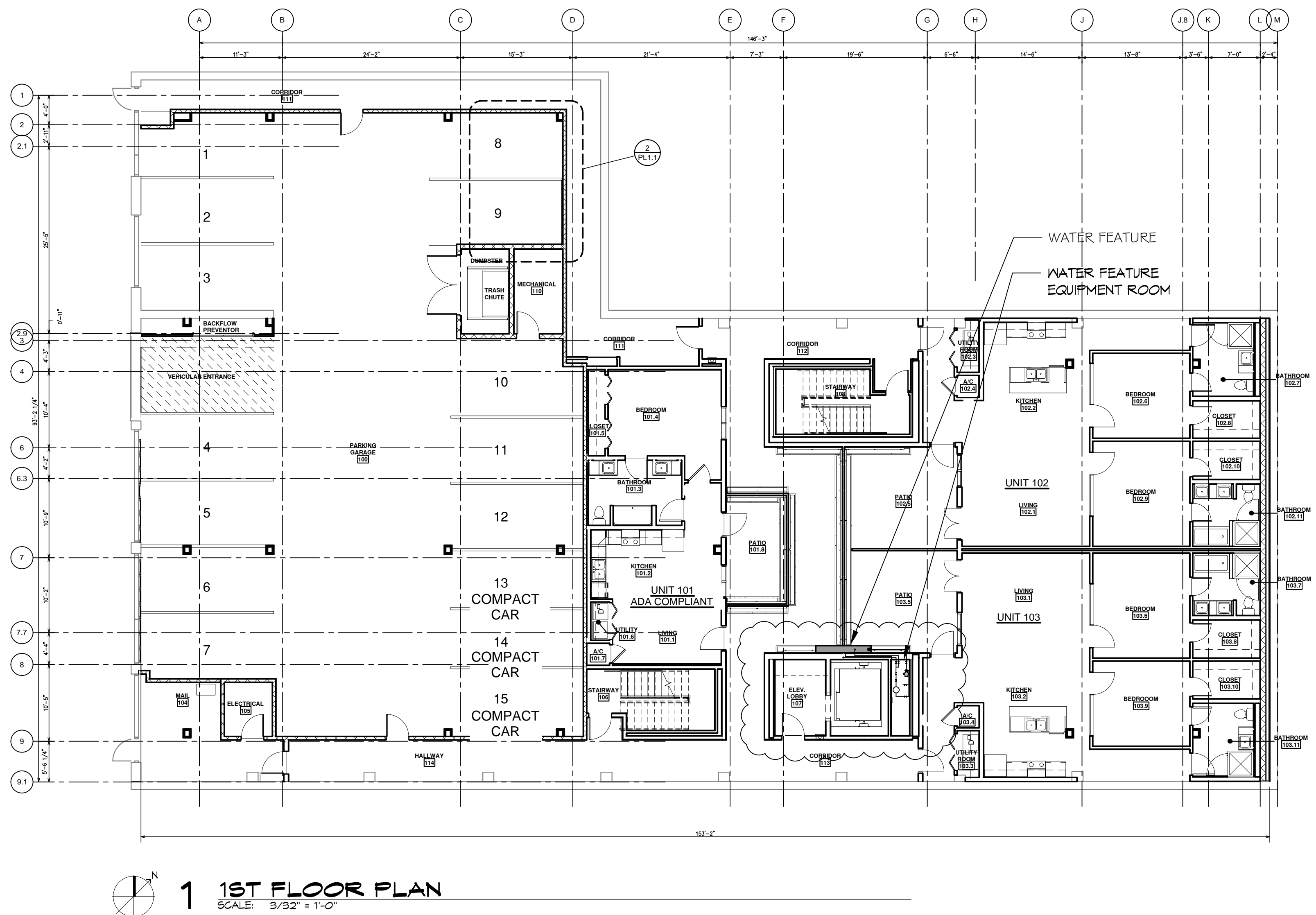


# WATER FEATURE EQUIPMENT LEGEND

QTY	DESCRIPTION
1	STA-RITE POSI CLEAR FILTER, PXCPR100 WITH PRESSURE GAUGE
1	PENTAIR SUPERFLO 1/2 HP PUMP
1	LEVOLOR - WATER LEVEL CONTROLLER MODEL K-1100
2	TRUE-UNION BALL VALVES FOR PIPE SIZE 2" AND SMALLER
1	6HPHA104 AQUASTAR 6 INCH ROUND HOCKEY PUCK SIDE WALL DRAIN ASSEMBLY
	SCH 80 PVC PIPE FOR ALL SUCTION, RETURN, AND EQUIPMENT ROOM PIPING
2	AQUA STAR 1020TST01 RETURN INLET WITHOUT EYEBALL FOR WATER LEVEL CONTROLLER



**DAMMON ENGINEERING, INC.**  
LOUISIANA & MISSISSIPPI  
www.dammonengineering.com  
info@dammonengineering.com  
PH: 985.649.5832

#	DESCRIPTION	DATE
1	Revised Notes	4/13/2017
2	IN POOL LIGHT FIXTURE ADDED	5/11/2017

SEAL:

NEW POOL MUSEUM KANAMOS  
917 Conti Street  
New Orleans, Louisiana  
JOB No: 2309 DATE: February 20, 2017  
DRAWN BY: DPE CHECKED BY: CCB  
SHEET TITLE: 1ST & 3RD FLOOR - FLOOR PLANS  
DRAWING NUMBER: PL-1.1  
SHEET No: 2 of 5