



American Crescent Elevator Corp..

P.O. Box 1047 St. Rose, LA 70087
(504)833-2219 (504)833-2487fax
www.americancrescentelevator.com

FAX TRANSMITTAL COVER SHEET

DATE: 7/14/08

TO: Fred Weber FAX: 464-1989

COMPANY: _____ PHONE: _____

FROM: Joey Loyacono FAX: 504-833-2487

TOTAL NUMBER OF PAGES INCLUDING COVER SHEET: 7

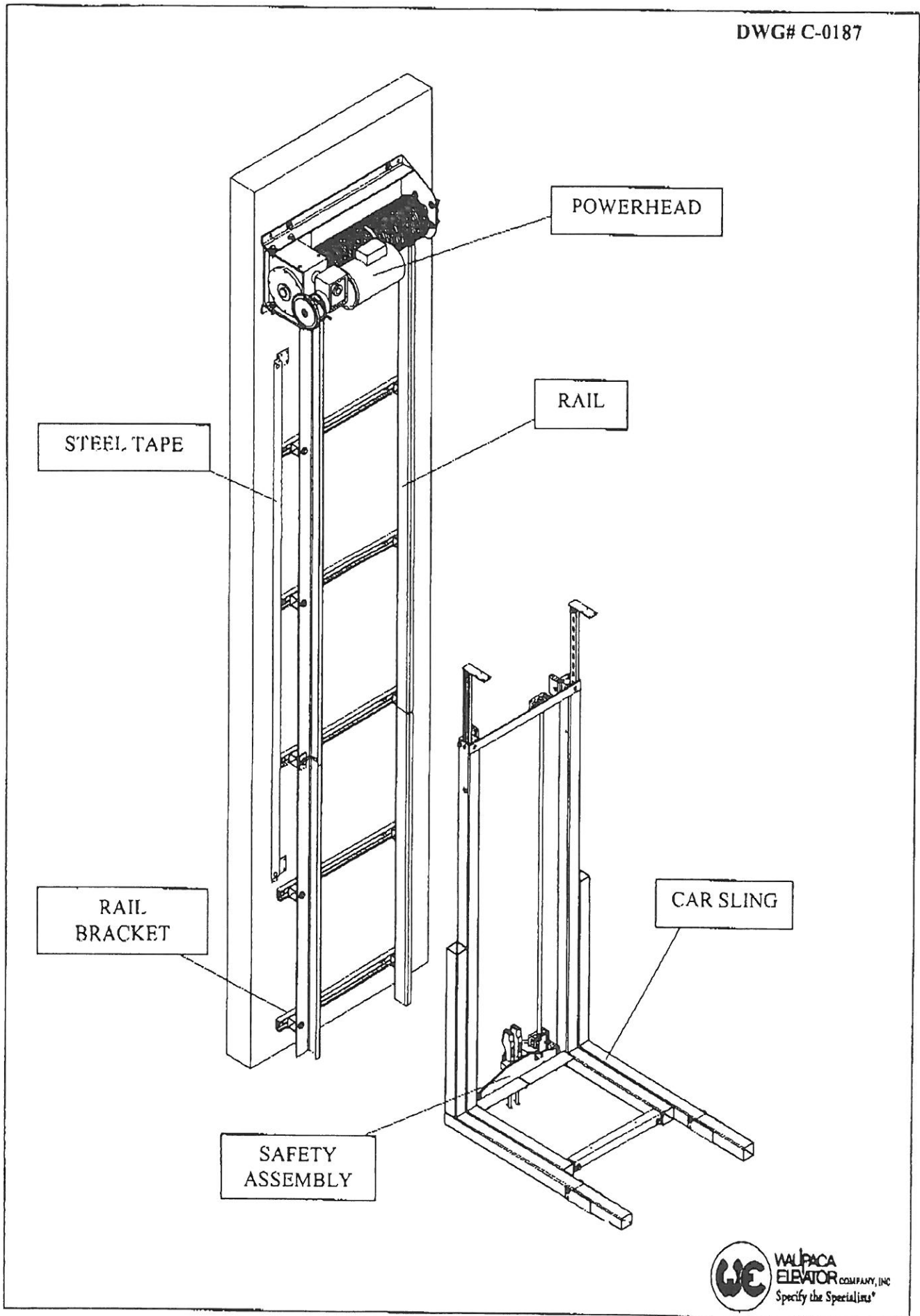
NOTES:

MR. WEBER, ATTACHED ARE DRAWINGS TO SHOW
CONTRACTOR OR ARCHITECT TO PUT IN HOUSE PLANS.
THE PLEASE CALL THE OFFICE FOR MORE
INFO OR PRICING AS NEEDED.

Joey

PLEASE CALL IF YOU HAVE ANY PROBLEMS WITH THIS TRANSMITTAL

DWG# C-0187



WAUPACA ELEVATOR CO., INC.
 1720 North Ballard Road
 Appleton, WI 54911
 Phone: 800-290-8759

Residential Elevators * Wheelchair-Compatible Elevators
RESIDENTIAL AND COMMERCIAL DUMBWAITERS

CUSTOMER:

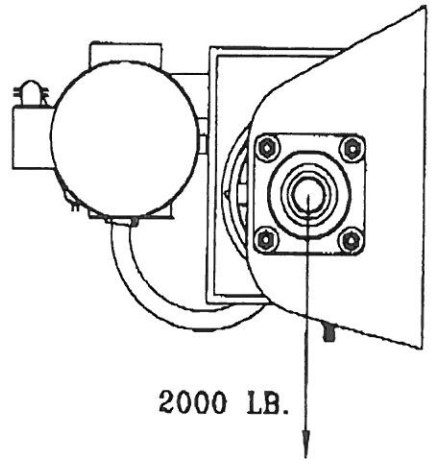
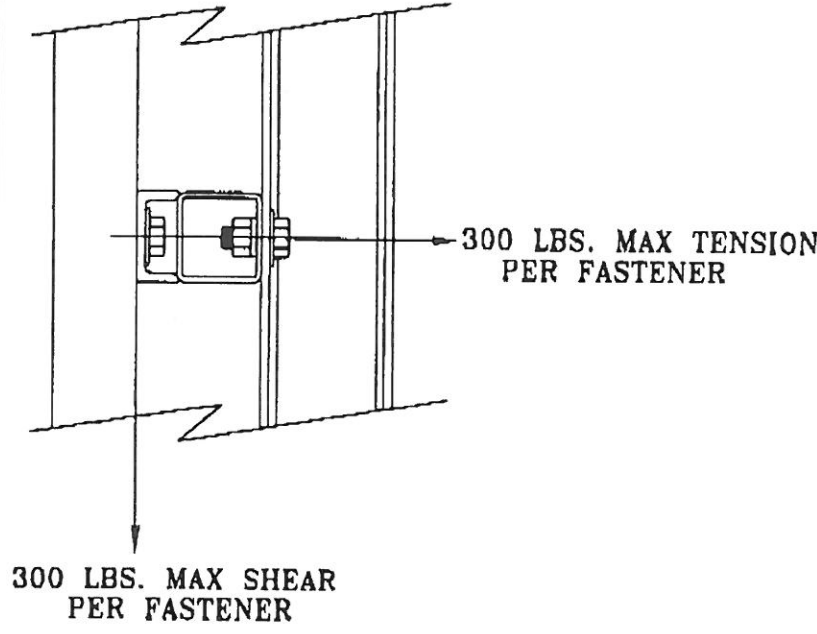
CONTRACTOR:

TITLE: **PACA GLIDE
 NOTES & SPECIFICATIONS
 750/1000 LB. CAPACITY**

QUOTE NUMBER:

DRAWN BY: SCALE: DWG. NO.
 APPD: DATE: C-002080

| REVISIONS | | | |
|-----------|--------------|-------|-----|
| LETTER: | DESCRIPTION: | DATE: | BY: |
| | | | |
| | | | |



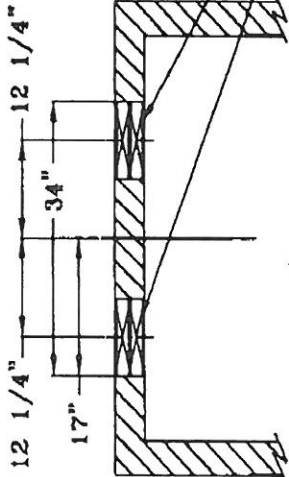
GENERAL NOTES

- THE FOLLOWING IS TO BE PROVIDED BY THE PURCHASER AND/OR CONTRACTOR UNLESS OTHERWISE SPECIFIED.
- 1) ELEVATOR TO BE CONSTRUCTED IN ACCORDANCE WITH ASME A17.1 PART 5.3 AND ALL LOCAL CODES.
 - 2) ELECTRICAL REQUIREMENTS ARE BY OTHERS AS FOLLOWS:
 230 VAC 20 AMP CIRCUIT 1 PHASE FUSED WITH 20 AMP SLOW BLOW FUSE TO BE INSTALLED IN A LOCKABLE FUSED DISCONNECT.
 120 VAC 15 AMP CIRCUIT 1 PHASE FUSED WITH 15 AMP SLOW BLOW FUSE.
 - 3) A MINIMUM OF ONE HOISTWAY DOOR, ENTRANCE, AND ASSOCIATED FRAMING SHALL BE LEFT UNFINISHED UNTIL THE ELEVATOR IS SET IN PLACE.
 - 4) HOISTWAY MUST BE PLUM WITHIN 1/8 INCH PER 10 FT OF HEIGHT AND SQUARE AT ANY POINT WITHIN 1/4 INCH BASED ON DIFFERENCE IN DIAGONAL MEASUREMENTS.
 - 5) MACHINE ROOM MUST BE PROVIDED FOR THE OPERATING EQUIPMENT THAT MEETS N.E.C. CLEAR SPACE REQUIREMENTS AND ALL LOCAL CODES. MACHINE ROOM MUST HAVE A LIGHT AND A CONVENIENCE OUTLET.
 - 6) ALL HOISTWAY DOORS REQUIRE AN INTERLOCK, DOOR HANDLE, AND LATCH SET.
 - 7) STRUCTURE MUST BE CAPABLE OF SUPPORTING THE APPROPRIATE LOADS. LOCAL ENGINEERING SUPPORT IS RECOMMENDED.
 - 8) ANY ALTERATIONS TO THE EQUIPMENT WITHOUT WRITTEN AUTHORIZATION BY WAUPACA ELEVATOR WILL VOID ALL WARRANTIES.
 - 9) WHEN USED, CONCRETE MUST BE A MINIMUM OF 4" THICK 3500 PSI.
 - 10) LOAD ON PIT FLOOR IS 4000 LBS.

GENERAL SPECIFICATIONS

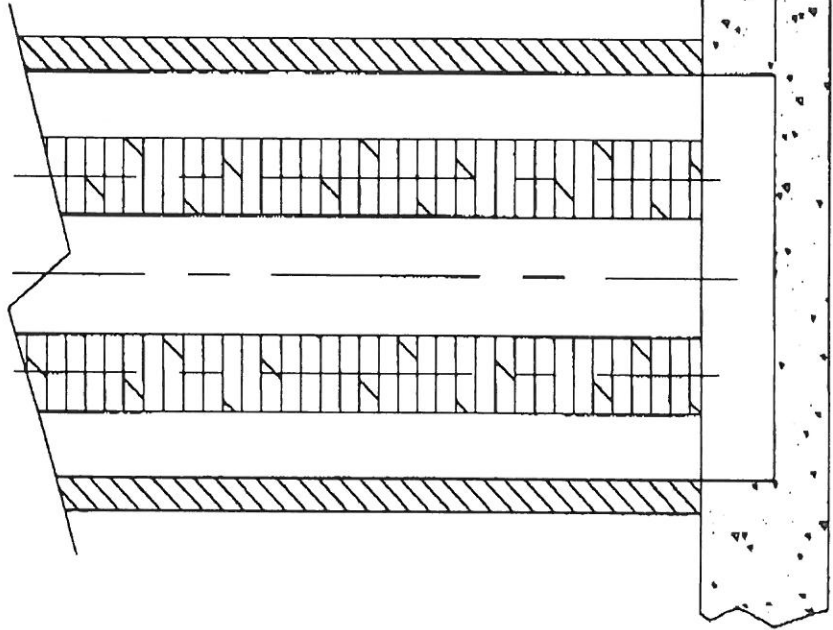
| | | | |
|-------------------------------------------------------------|----------------------------------|-------------------|----------------|
| RATED LOAD (CAPACITY): | | SPEED: | 40 FPM |
| WEIGHT OF CAB,GATE(S),AND FIXTURES SHALL NOT EXCEED 600LBS. | | | |
| SUSPENSION ROPE: | (2) 3/8-8x19 TRACTION STEEL FC | | |
| GUIDE RAIL: | J-TYPE CONFIGURATION | | |
| GEAR BOX RATIO: | 100:1 | | |
| DRUM DIAMETER: | 7.875 in | | |
| MOTOR: | 3 HP 230 VOLTS B.6 FLA 60 HZ 3PH | | |
| CAB LIGHT CIRCUIT: | 120V, 15A | | |
| CAB ALARM BELL: | ALARM W/BATTERY | | |
| CAB MODEL: | | | |
| CAB SIZE: | | | |
| TRAVEL: | NUMBER OF STOPS: | | |
| HOISTWAY DOOR INTERLOCKS: | | | |
| CONTROLLER SIZE: | 18" x 18" x 8" | BATTERY BOX SIZE: | 12" x 12" x 8" |

| REVISIONS | | |
|-----------|---------------------------|---------|
| LETTER | DESCRIPTION | DATE |
| B | REVISED FOR 60' CAR FRAME | 3/31/04 |
| | | MK |



(4) 1 3/4" x 9 1/2" LAMINATED VENEER LUMBER (LVL) HEIGHT OF HOISTWAY IS USED TO ANCHOR RAIL BRACKETS

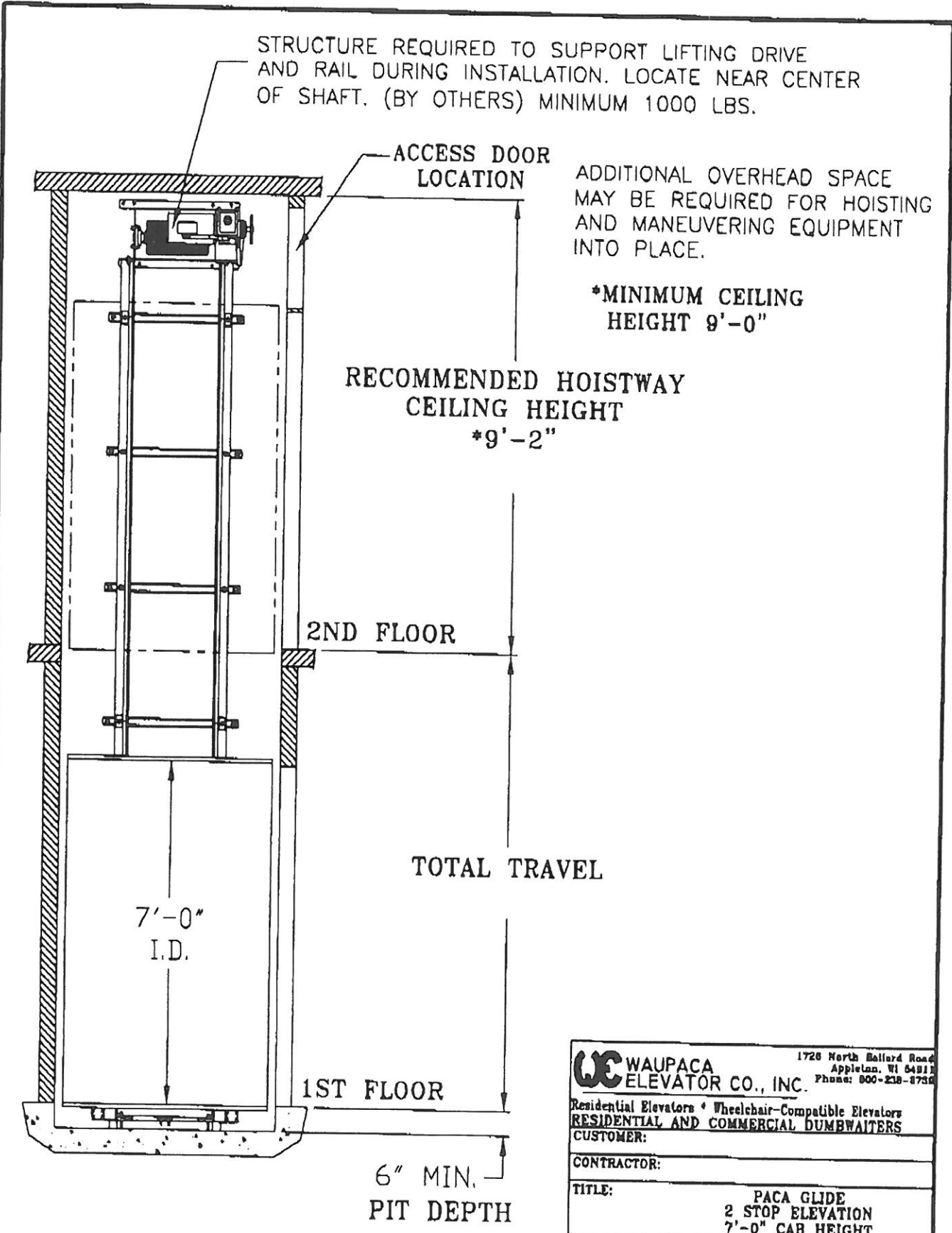
C/L RAIL



NOTE:

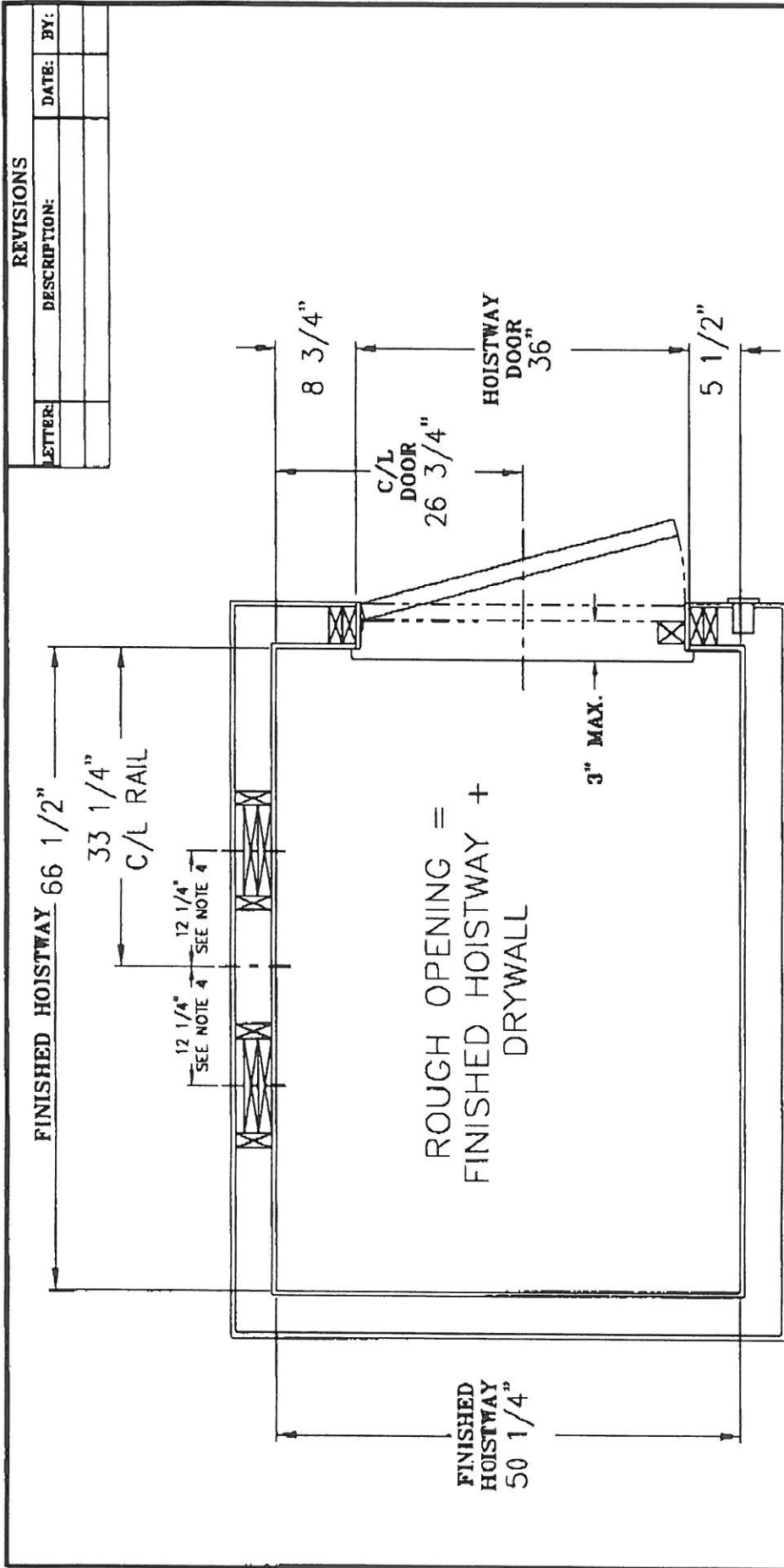
THIS DRAWING DEPICTS SAMPLE CONSTRUCTION ONLY. IT IS THE RESPONSIBILITY OF THE INSTALLER/ CONTRACTOR OR ENGINEER TO DESIGN AND SPECIFY STRUCTURAL SUPPORTS. ALL CONSTRUCTION TO BE IN COMPLIANCE WITH LOCAL CODES.

| | |
|-----------------------------------------------------------------------------------------------------------|-------------------------|
| WAUPACA ELEVATOR CO., INC. 1725 North Bellard Road Appleton, WI 54911 Phone: 800-238-6738 | |
| CONTRACTOR: | PACA GLIDE |
| TITLE: | RAIL WALL REINFORCEMENT |
| QUOTE NUMBER: | |
| DRAWN BY: | SCALE: |
| APPD: | DATE: |
| | DWG. NO. C-002069 |



NOTE:
CONTROLLER TO BE LOCATED OUTSIDE OF HOISTWAY.

| | | | |
|-----------------------------------|--------|----------------------------------------------------------------------------------------------------------|--|
| WAUPACA ELEVATOR CO., INC. | | 1728 North Ballard Road Appleton, WI 54912 Phone: 900-218-8730 | |
| | | Residential Elevators * Wheelchair-Compatible Elevators RESIDENTIAL AND COMMERCIAL DUMBWAITERS | |
| CUSTOMER: | | | |
| CONTRACTOR: | | | |
| TITLE: | | PACA GLIDE 2 STOP ELEVATION 7'-0" CAB HEIGHT | |
| QUOTE NUMBER: | | | |
| DRAWN BY: | SCALE: | DWG. NO. | |
| APPD: | DATE: | C-002082 | |

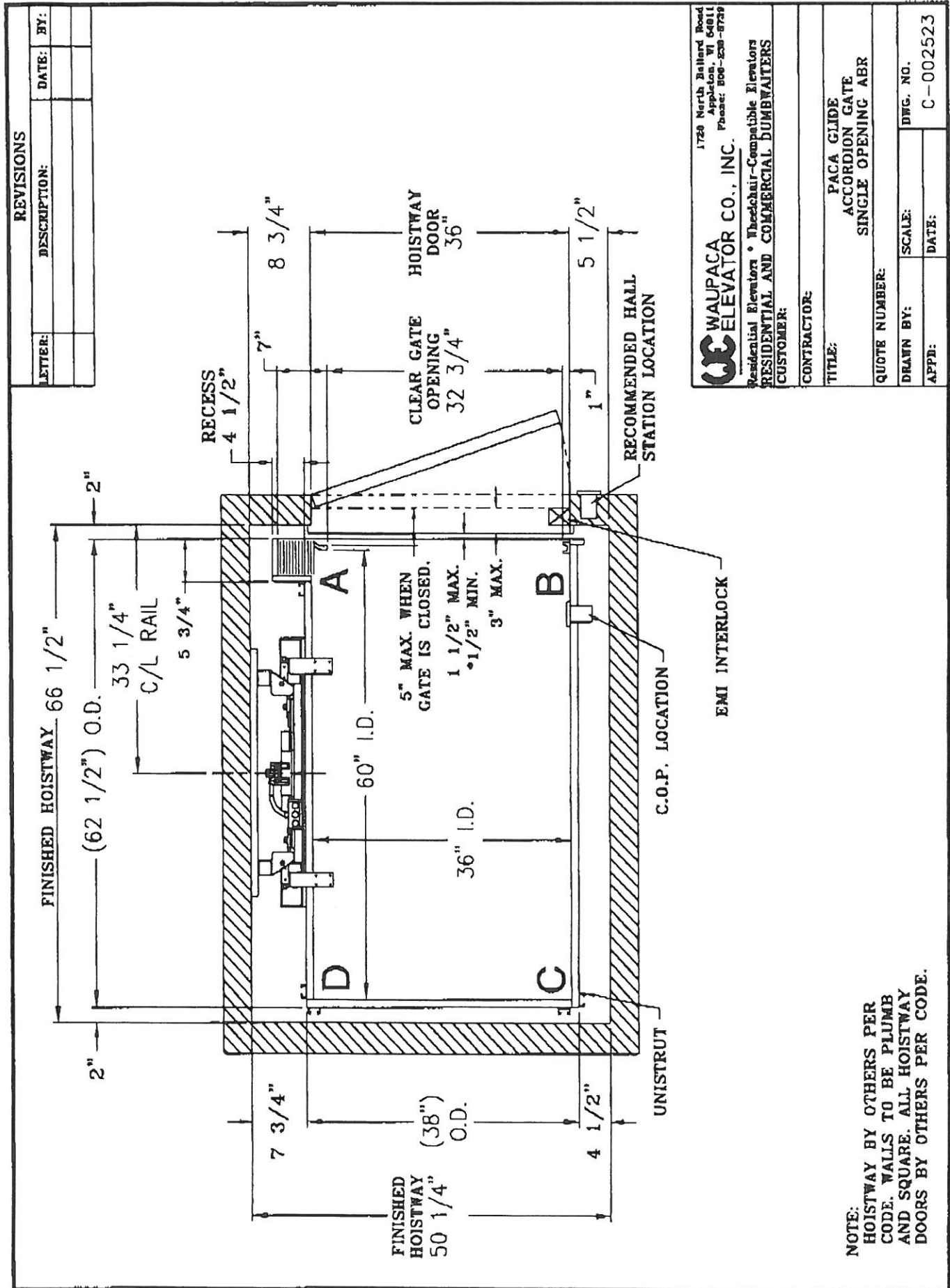


| REVISIONS | |
|-----------|-------------|
| LETTER | DESCRIPTION |
| | |
| | |
| | |

| | |
|-----------------------------------------------------------------------------------------------------------------------|----------|
| WALUPACA ELEVATOR CO., INC. 1726 North Ballard Road Appleton, WI 54912 Phone: 800-228-8736 | |
| Residential Elevators • Wheelchair-Compatible Elevators RESIDENTIAL AND COMMERCIAL DUMBWAITERS CUSTOMER: | |
| CONTRACTOR: | |
| TITLE: PACA GLIDE ACCORDION GATE SINGLE OPENING ABR | |
| QUOTE NUMBER: | |
| DRAWN BY: | SCALE: |
| APPD: | DATE: |
| DWG. NO. | C-002528 |

CONTRACTOR'S LAYOUT

- NOTE:
- HOISTWAY BY OTHERS PER CODE. WALLS TO BE PLUMB AND SQUARE. ALL HOISTWAY DOORS BY OTHERS PER CODE.
 - (1) 2"x10" LAMINATED VENEER LUMBER (LVL) IS USED TO ANCHOR RAIL BRACKETS.
 - DOOR OFFSET IS BASED ON 2"x4" CONSTRUCTION. CONSULT ELEVATOR DEALER FOR 2"x6" CONSTRUCTION.
 - IF TRAVEL EXCEEDS 25'-0" CONSULT ELEVATOR DEALER FOR PROPER BACKING LOCATION.



| REVISIONS | | |
|-----------|--------------|-------|
| LETTER: | DESCRIPTION: | DATE: |
| | | |
| | | |

| | |
|----------------------------------------------------------------------------------------------------------------|----------|
| WALUPACA ELEVATOR CO., INC. 1728 North Ballard Road Appleton, WI 54911 Phone: 908-208-8759 | |
| Residential Elevators • Wheelchair-Compatible Elevators RESIDENTIAL AND COMMERCIAL DUMBWAITERS CUSTOMER: | |
| CONTRACTOR: | |
| TITLE: PACA GLIDE ACCORDION GATE SINGLE OPENING ABR | |
| QUOTE NUMBER: | |
| DRAWN BY: | SCALE: |
| APPD: | DATE: |
| DWG. NO. | C-002523 |

NOTE:
 HOISTWAY BY OTHERS PER
 CODE. WALLS TO BE PLUMB
 AND SQUARE. ALL HOISTWAY
 DOORS BY OTHERS PER CODE.