

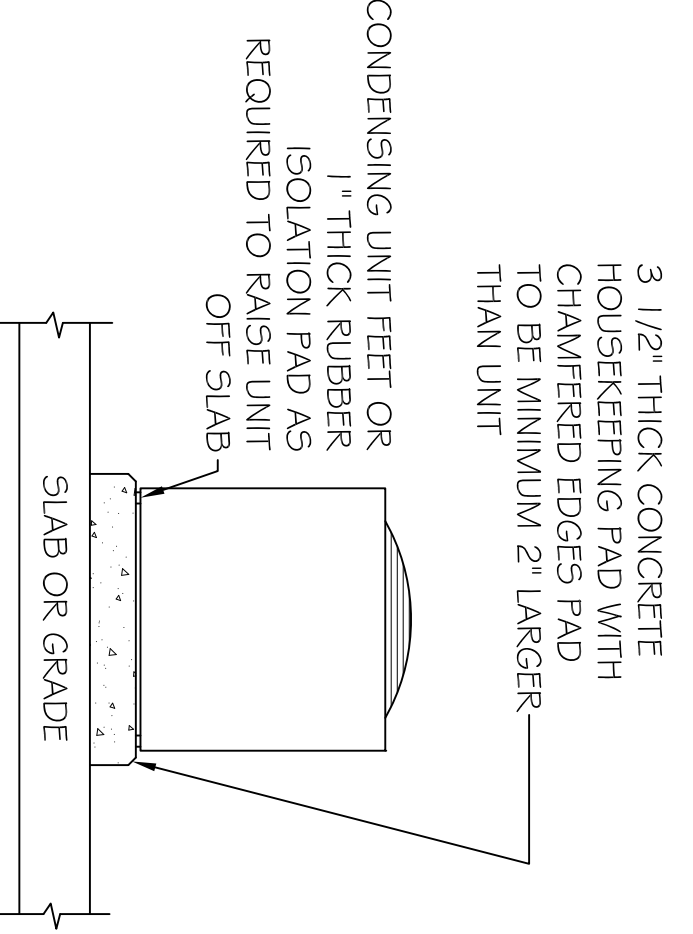
SOUTH WING
DUCTLESS SYSTEM

3000 BOUTER



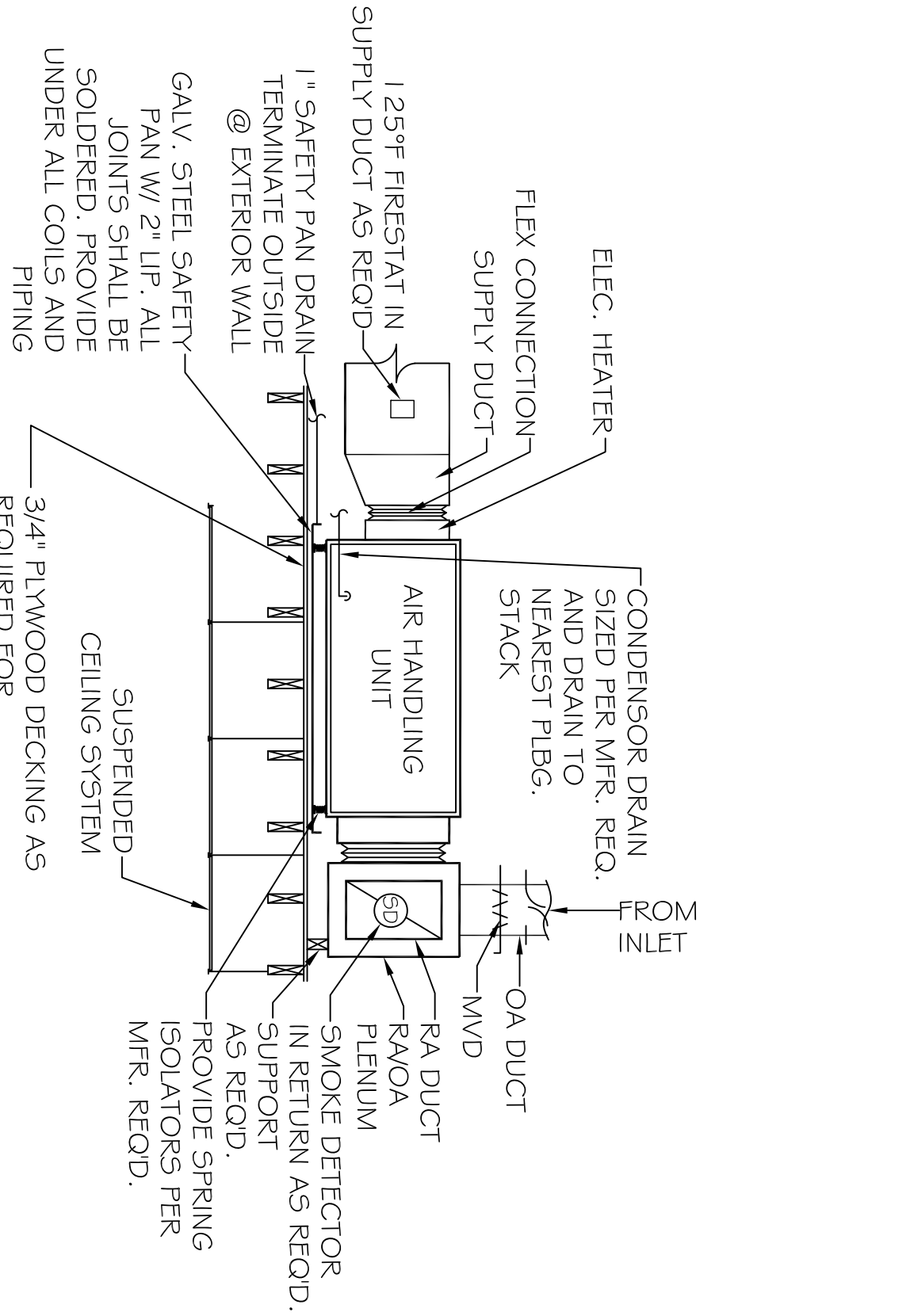
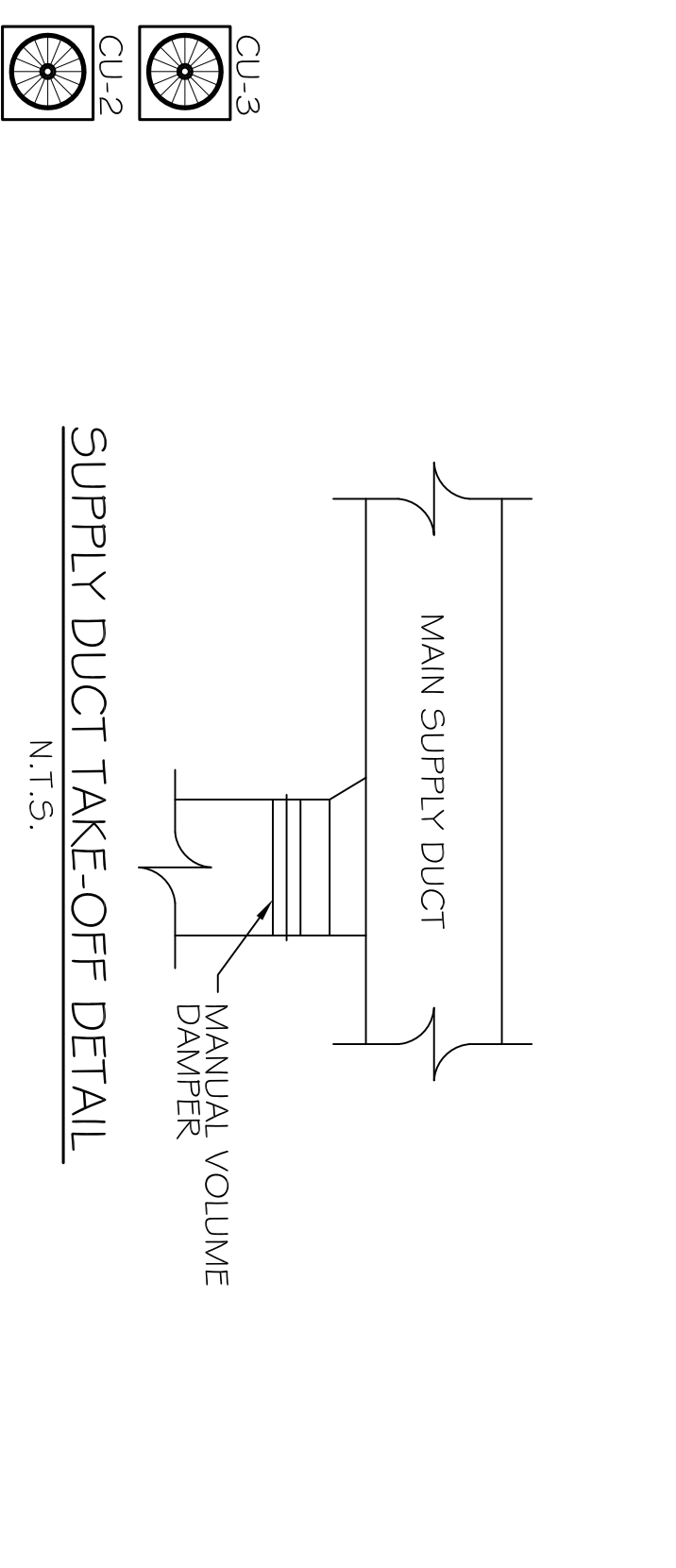
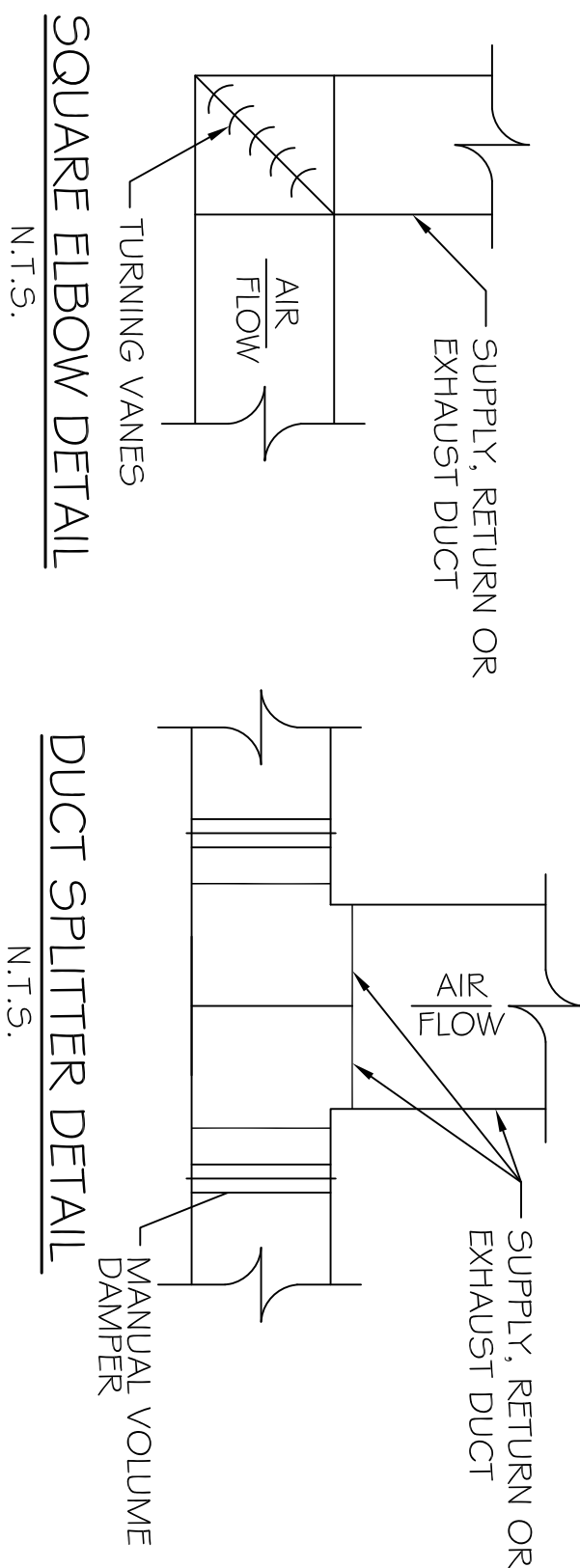
LEGEND

- ☒ INDICATES NEW CEILING DIFFUSER - CFM AS NOTED - 12x12 UNLESS OTHERWISE NOTED
- ☑ INDICATES NEW 24x24 RETURN AIR CEILING GRILLE. TRANSFER DUCT TO BE RECTANGULAR AS INDICATED
- ⊖ MECHANICAL EXHAUST VENT
- Ⓢ DIGITAL THERMOSTAT
- ⊙ CONDENSOR UNIT
- ▭ INDICATES NEW SHEET METAL DUCTWORK FOR SUPPLY AIR. SIZES INDICATED ARE SHEET METAL DIMENSIONS
- ▭ INDICATES NEW SHEET METAL DUCTWORK FOR RETURN AIR. SIZES INDICATED ARE SHEET METAL DIMENSIONS
- ~ ROUND FLEX DUCT. MAX. LENGTH 14'-0". CONNECTIONS, SIZE AS INDICATED OR 0-200 CFM, USE #10; 201-300 CFM, USE #8; 301-400 CFM, USE #7



NORTH WING

- MECHANICAL NOTES**
- SYSTEM SHALL BE DESIGNED IN ACCORDANCE WITH ALL APPLICABLE CODES, STANDARDS, AND REQUIREMENTS OF LOCAL UTILITY OFFICIALS. DESIGN ENGINEER SHALL PREPARE CALCULATIONS FOR EQUIPMENT SIZING, DUCT SIZING, ACCESSORY ARRANGEMENT, ETC., AND SHALL PREPARE FINAL DRAWING ACCORDINGLY.
 - FURNISH ALL DUCTWORK, CONTROL WIRING, PIPING, FITTINGS, ACCESSORIES, ETC., FOR COMPLETE INSTALLATION.
 - INSULATE ALL HEATING OR CONDENSOR WATERLINES IN UN-INSULATED SPACES OR SHALL BE TAPED CLOSED W/Foil FACED TYPE.
 - CLOSELY COORDINATE WORK WITH ALL OTHER TRADES. MAINTAIN CEILING HEIGHTS AND DUCT SPACES PROVIDED.
 - ALL VALVES, DAMPERS AND OTHER CONTROL DEVICES SHALL BE ACCESSIBLE FOR OPERATION AND MAINTENANCE THROUGH ACCESSIBLE CEILINGS OR THROUGH ACCESS DOORS OR PANELS MANUFACTURED FOR SUCH PURPOSES.
 - ALL UNITS ABOVE CEILING SHALL HAVE AUXILIARY DRAIN PANS INSTALLED BELOW ENTIRE UNIT.
 - IF GAS IS BEING USED, PROVIDE PRESSURE REGULATORS FOR ALL GAS EQUIPMENT AS REQUIRED FOR PROPER OPERATION. VERIFY GAS PRESSURE AT METER TO DETERMINE NECESSITY OR REGULATORS.
 - COORDINATE WITH ELECTRICIAN CONCERNING ITEMS REQUIRING ELECTRICAL SERVICE SUCH AS CONDENSING UNITS, AIR-HANDLING UNITS, CONDENSATE PUMPS, MOTORIZED DAMPERS, ETC. COORDINATE SERVICE AND AMPACITY REQUIRED.
 - THE BUILDER SHALL TEST PRESSURE-REDUCING VALVES, T&P RELIEF VALVE, AND OTHER SAFETY DEVICES PRIOR TO OPERATING SYSTEM. THE BUILDER SHALL TEST AND BALANCE ALL SYSTEMS PRIOR TO COMPLETION OF THE WORK.



MECHANICAL PLAN
SCALE: 3/16" = 1'-0"

TYPICAL HORIZONTAL AHU DETAIL
SCALE: N.T.S.

<p>M-1</p> <p>SHEET No: 09 OF 12</p> <p>MECHANICAL PLAN</p>	<p>REVISIONS</p> <table border="1"> <thead> <tr> <th>#</th> <th>DESCRIPTION</th> <th>DATE</th> </tr> </thead> <tbody> <tr> <td> </td> <td> </td> <td> </td> </tr> </tbody> </table>	#	DESCRIPTION	DATE				<p>PAUL WRIGHT ADDITION TO EXISTING RESIDENCE</p> <p>67111 LOUISIANA HWY 434 LACOMBE, LA 70135</p>	<p>DAMMON ENGINEERING, INC. Architects & Engineers</p>
	#	DESCRIPTION	DATE						
<p>JOB No: 2147</p> <p>DRAWN BY: BSN</p>	<p>DATE: 08-06-2012</p> <p>CHECKED BY: BSN</p>	<p>CHIEF ENGINEER: EMMETT DAMMON, P.E. CHIEF ARCHITECT: ROBERT WILTSE 554 OLD SPANISH TRAIL SLIDELL, LA 70458</p>	<p>dammonengineering.com dammoneng@bellsouth.net PHONE: 985-649-5832 FAX: 985-641-5950</p>						