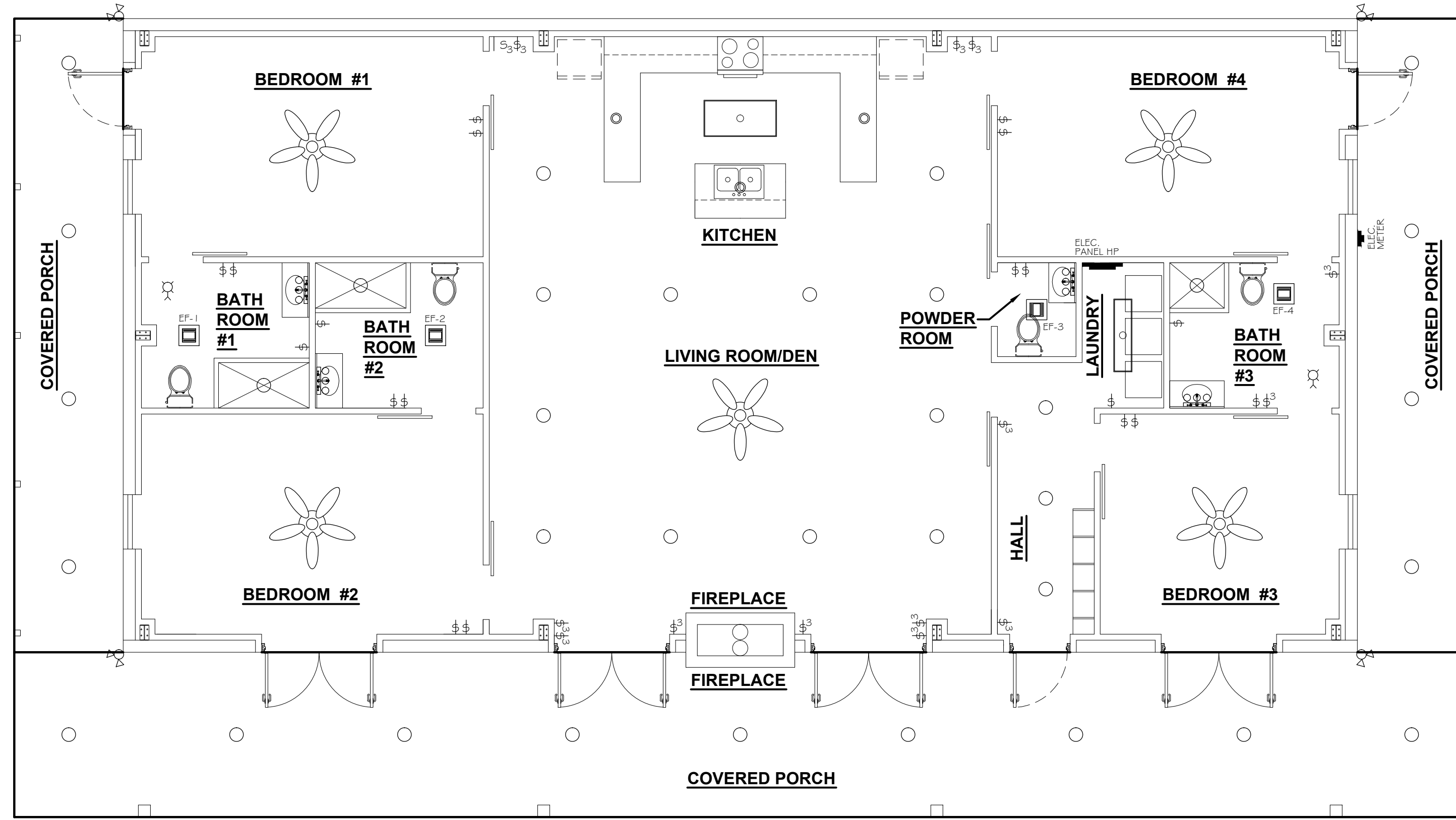
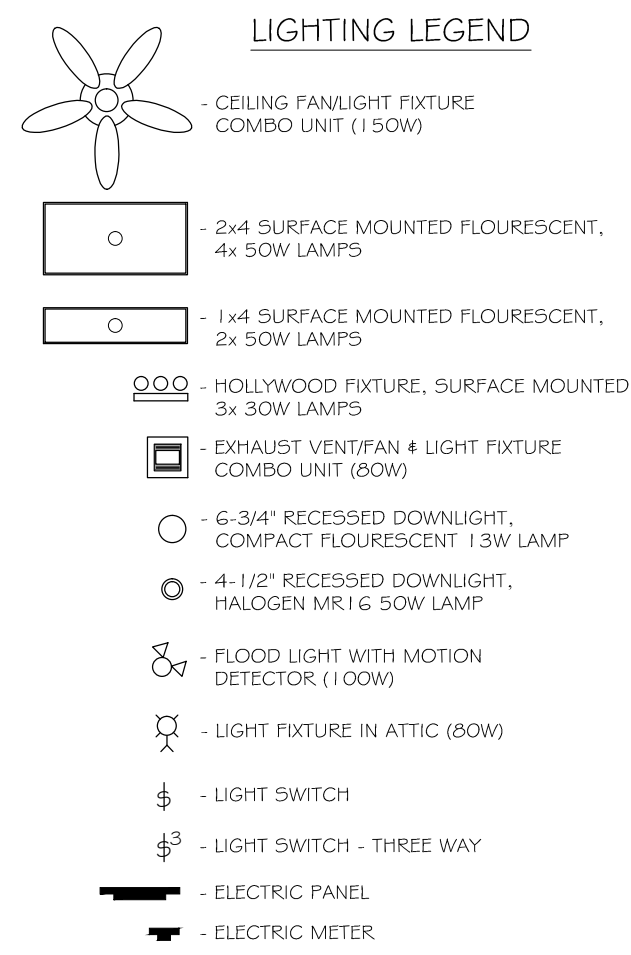


ELECTRICAL NOTES

- DRAWINGS ARE DIAGRAMMATIC ONLY. FURNISH ALL CONDUIT, WIRING, PANELS, BREAKERS, DISCONNECTS, ACCESSORIES, ETC. FOR COMPLETE INSTALLATION RATHER OR NOT EVERY ITEM IS SHOWN OR SPECIFIED.
- THESE DRAWINGS ARE INTENDED AS GENERAL GUIDELINES FOR PURPOSES OF ESTABLISHING CERTAIN MIN. CRITERIA AND DO NOT NECESSARILY REPRESENT THE FINAL LAYOUT, ARRANGEMENT, SIZE, BRAND NAME, CAPACITY OR OTHER CHARACTERISTICS OF THE ENGINEERED SYSTEM. SYSTEM SHALL BE DESIGNED IN ACCORDANCE WITH ALL APPLICABLE CODES, STANDARDS AND REQUIREMENTS OF LOCAL UTILITY OFFICIALS.
- INSTALL GFI OUTLETS AS REQUIRED BY APPLICABLE CODES. INSTALL GROUND FAULT RECEPTACLES AT RECEPTACLE LOCATIONS WITHIN 5' OF SINKS OR LAVATORIES, AND AT EXTERIOR LOCATIONS. EXTERIOR RECEPTACLES SHALL ALSO BE WEATHERPROOF.
- INSTALL HARDWIRED SMOKE DETECTORS WITH BATTERY BACKUP AS REQUIRED. INTER-CONNECT DETECTORS SO THAT ALL WILL SOUND SHOULD ONE DETECTOR ACTIVATE.
- SOME EQUIPMENT SHOWN ON OTHER PLANS MAY REQUIRE ELECTRICAL SERVICE, SUCH AS WATER HEATER, CONDENSING UNITS, AIR-HANDLING UNITS, CONDENSATE PUMPS, ETC.. ELECTRICAL CONTRACTOR SHALL INCLUDE ELECTRICAL SERVICE TO ALL SUCH EQUIPMENT. COORDINATE WITH OTHER TRADES CONCERNING ITEMS REQUIRING ELECTRICAL SERVICE. PROVIDE ONE DUPLEX OUTLET AND LIGHT IF UNIT IS IN NON-LIT AREA FOR EVERY CONDENSING UNIT AND EVERY AIR-HANDLING UNIT AS REQUIRED BY APPLICABLE CODES.
- OBTAIN NAME PLATE AND RATINGS OF ALL EQUIPMENT BEFORE ROUGHING IN AND PROVIDE WIRING OF PROPER SIZE, VOLTAGE, AND AMPACITY. PROVIDE FUSED OR NON-FUSED DISCONNECT SWITCH AS REQUIRED.
- PROVIDE PANEL BOARDS OF PROPER VOLTAGE AND AMPACITY FOR ALL ELECTRICAL CIRCUITS.
- VERIFY SERVICE REQUIREMENTS WITH LOCAL POWER COMPANY INCLUDING TRANSFORMER, LOCATIONS AND TYPES, DISCONNECTS AT EXTERIOR OF BLDG., VOLTS AND AMPACITIES AND OTHER DETAILS OF ELECTRICAL CONSTRUCTION. SEE ALL FEEDERS ACCORDING TO NEG. REQUIREMENTS.
- RUN ALL CABLE CONCEALED IN WALLS, CEILING OR FLOORS UNLESS NOTED OTHERWISE.
- SUPPORT ALL FIXTURES AND OTHER ITEMS RIGIDLY FROM STRUCTURE.
- INSULATE AND SEAL SOLIDLY BEHIND RECEPTACLES IN EXTERIOR WALLS.
- ALL SWITCHES AND OUTLETS ON FIRST FLOOR TO BE 1'-0" ABOVE BASE FLOOR ELEVATION.
- WHERE MORE THAN ONE SWITCH OCCURS IN THE SAME LOCATION, THEY SHALL BE INSTALLED IN A GANG TYPE BOX UNDER ONE COVER PLATE.
- ALL OUTLETS SHALL BE INSTALLED 15" AFF UNLESS NOTED OTHERWISE. SEE ELECTRICAL POWER PLAN FOR INDICATED MOUNTING HEIGHT.
- REFER TO REFLECTED CEILING PLAN FOR RECESSED LIGHT FIXTURE LOCATIONS.



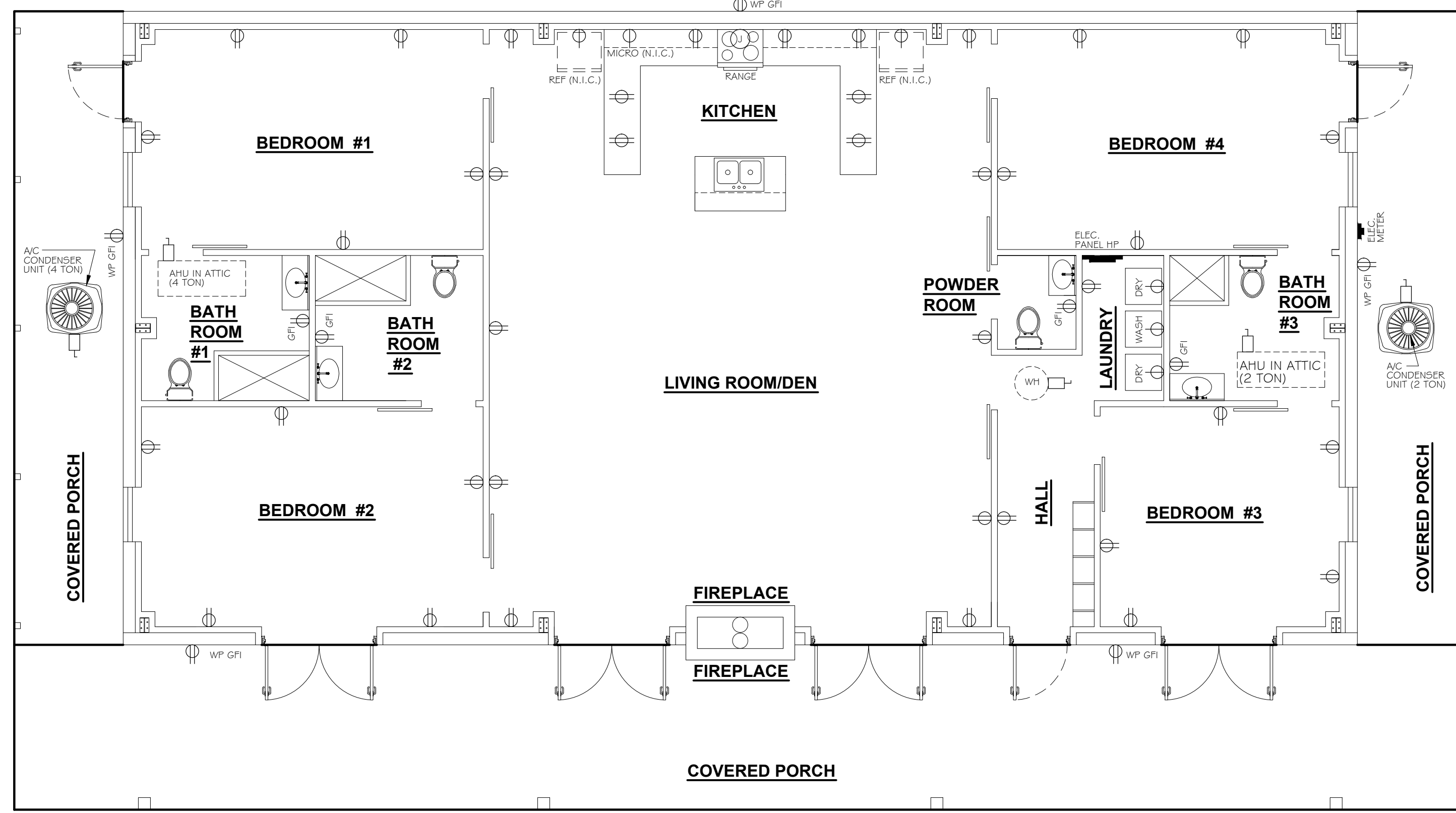
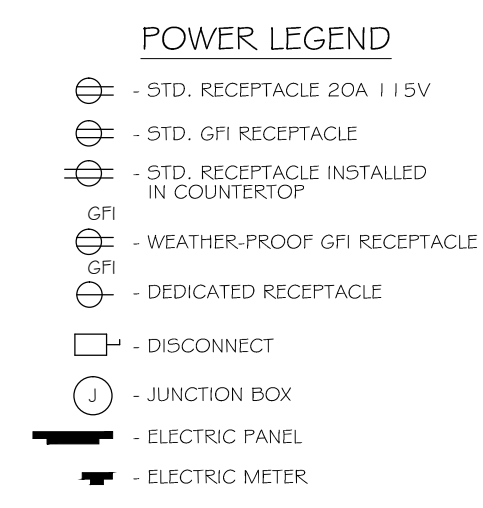
2 LIGHTING PLAN
SCALE: 3/16" = 1'-0"

PANEL HP
LOCATION: LAUNDRY ROOM
FEEDER SOURCE: ELECTRIC UTILITY COMPANY

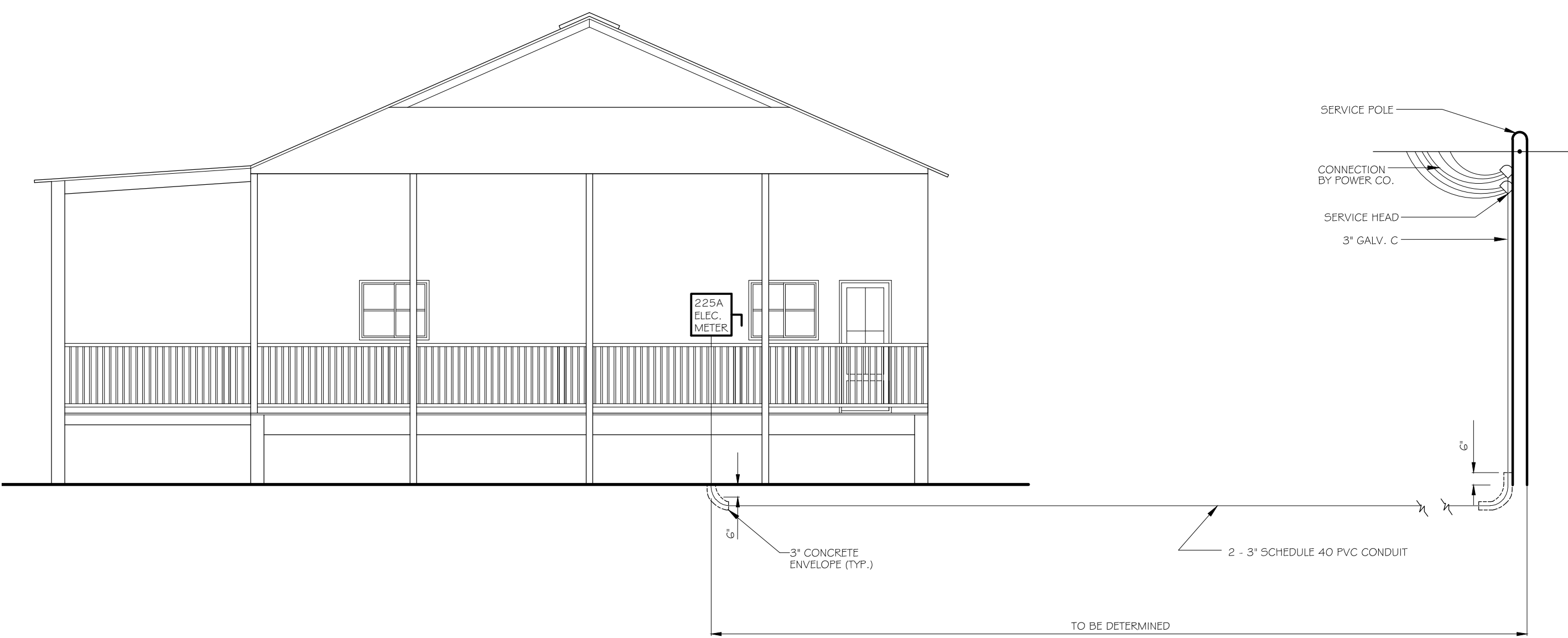
VOLTAGE: 120/240V, 225A 1Ø, 3W
ENCLOSURE: SURFACE MOUNTED, 225A MB, WEQUIPMENT GND BAR

CIR. NO.	THRU WIRE SIZE	LOAD DESCRIPTION	BREAKER	LOAD (VA)	LOAD (VA)	BREAKER	LOAD DESCRIPTION	THRU WIRE SIZE	CIR. NO.
		LOCATION	AMP POLE			AMP POLE	LOCATION		
1	#8	A/C CONDENSING UNIT #1 TON	40 2	3000	3260	2 45	AIR HANDLING UNIT #1 TON (10 W/HEAT)	#6	2
3	#8	A/C CONDENSING UNIT #2 TON	40 2	3000	3260	2 45	AIR HANDLING UNIT #2 TON (10 W/HEAT)	#6	4
5	#10	A/C CONDENSING UNIT #3 TON	20 2	1440	2040	2 60	AIR HANDLING UNIT #3 TON (5 W/HEAT)	#6	5
7	#10	A/C CONDENSING UNIT #4 TON	20 2	1440	2040	2 60	AIR HANDLING UNIT #4 TON (5 W/HEAT)	#6	6
9	#10	DEDICATED 220V RECEPTACLE IN LAUNDRY ROOM FOR DRYER	20 2	2500	2500	2 30	DEDICATED 220V RECEPTACLE IN LAUNDRY ROOM FOR DRYER	#10	10
11	#10	DEDICATED 220V RECEPTACLE IN LAUNDRY ROOM FOR DRYER	20 2	2500	2500	2 30	DEDICATED 220V RECEPTACLE IN LAUNDRY ROOM FOR DRYER	#10	12
13	#6	JUNCTION BOX FOR RANGE	50 2	4000	4500	2 40	WATER HEATER IN ATTIC (50 GALON)	#6	14
15	#6	JUNCTION BOX FOR RANGE	50 2	4000	4500	2 40	WATER HEATER IN ATTIC (50 GALON)	#6	16
17	#12	RECEPTACLES IN LIVING ROOM/DEN AREA ALONG LEFT WALL	20 1	900	900	1 20	RECEPTACLES IN LIVING ROOM/DEN AREA ALONG RIGHT WALL	#12	18
19	#12	RECEPTACLES IN KITCHEN AREA & W/P GFI RECEPTACLE ON REAR EXTERIOR WALL	20 1	1440	180	1 20	DEDICATED RECEPTACLE FOR REFRIGERATOR	#12	20
21	#12	DEDICATED RECEPTACLE FOR REFRIGERATOR	20 1	180	180	1 20	DEDICATED RECEPTACLE FOR MICROWAVE	#12	22
23	#12	BEDROOM #1 RECEPTACLES, BATHROOM #1 GFI RECEPTACLE, & W/P GFI RECEPTACLE	20 1	1260	1260	1 20	BEDROOM #2 RECEPTACLES, BATHROOM #2 GFI RECEPTACLE, & W/P GFI RECEPTACLE	#12	24
25	#12	HALL & LAUNDRY STANDARD RECEPTACLES, & POWDER ROOM GFI RECEPTACLE	20 1	940	1900	1 30	SMOKE DETECTORS	#12	26
27	#12	DEDICATED RECEPTACLE IN LAUNDRY FOR WASHING MACHINE	20 1	180	1240	1 20	BEDROOM #3 RECEPTACLES, BATHROOM #3 GFI RECEPTACLE, & W/P GFI RECEPTACLE	#12	28
29	#12	LIVING ROOM/DEN KITCHEN AREA LIGHTS & CEILING FAN	20 1	700	400	1 20	BEDROOM #4 & 2 LIGHTS & CEILING FAN	#12	30
31	#12	BEDROOM #3 & 4 LIGHTS & CEILING FAN, BATHROOM #3 LIGHTS & EXHAUST FAN	20 1	400	400	1 20	HALL LAUNDRY ROOM, & POWDER ROOM LIGHTS & EXHAUST FAN	#12	32
33	#12	COVERED PORCHES LIGHTS & ATTIC LIGHT	20 1	400	400	1 20	EXTERIOR FLOOD LIGHTS W/DRISKS	#12	34
35	-	SPARE	20 1	-	-	1 20	SPARE	-	36
37	-	SPARE	20 1	-	-	1 20	SPARE	-	38
39	-	SPARE	-	-	-	-	SPARE	-	40
41	-	SPARE	-	-	-	-	SPARE	-	42
				TOTAL CONNECTED LOAD (VA) = 73,060					
				40 = 36,840	80 = 36,220				

NOTE: ALL SINGLE POLE BREAKERS SHALL BE ARC FAULT



1 POWER PLAN
SCALE: 3/16" = 1'-0"



ELECTRICAL SERVICE DETAIL
NTS

REVISIONS

#	DATE	DESCRIPTION

PRELIMINARY
NOT FOR
CONSTRUCTION

A MULTIPLE BUILDING FOR
THE HINES PROPERTY IN
HANCECK COUNTY
MISSISSIPPI

1084 JOHN AVACKER ROAD
POPLARVILLE, MS 39470

JOB No: 221B DATE: 12-10-14
DRAWN BY: JTL CHECKED BY: GKD