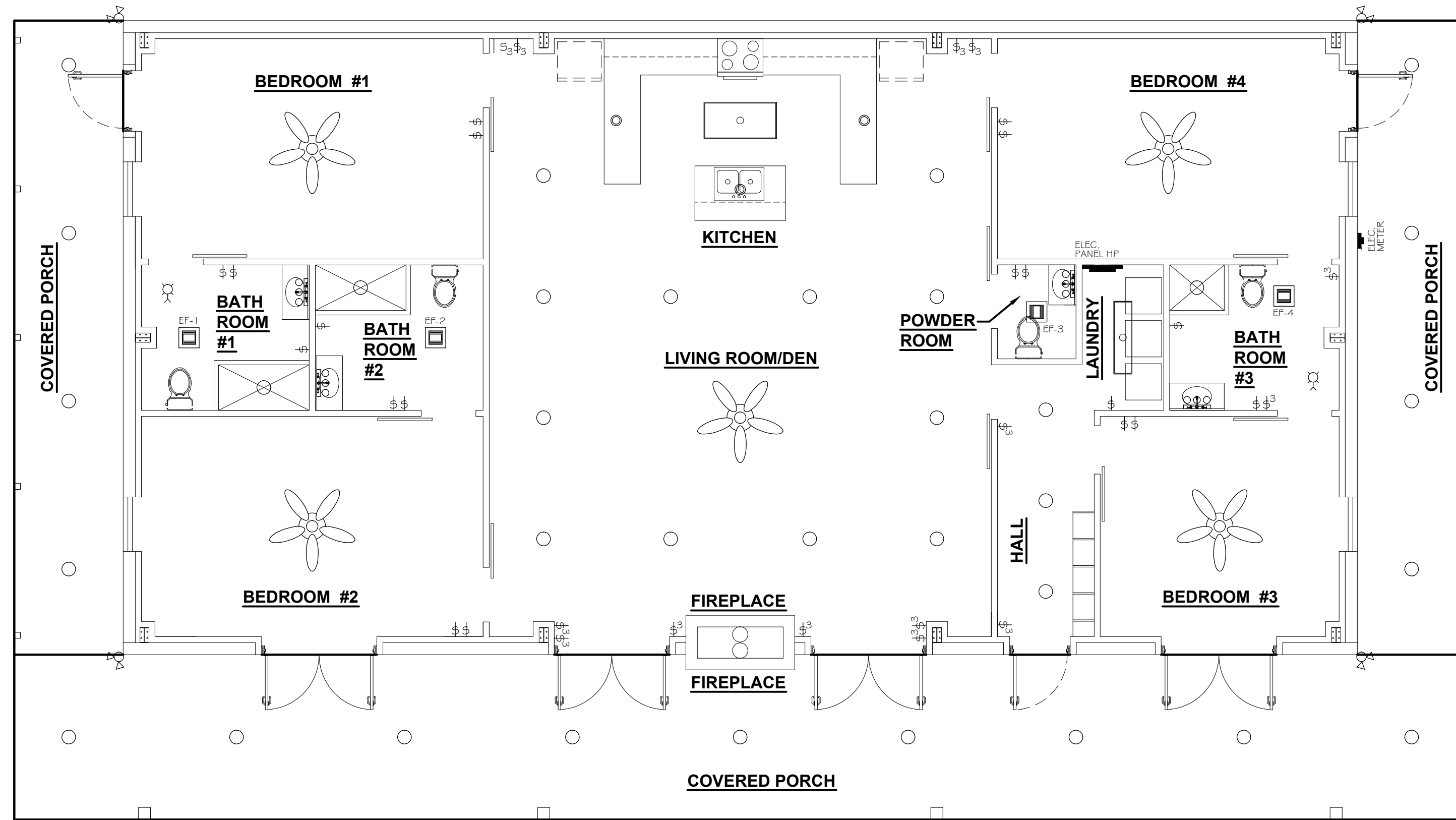
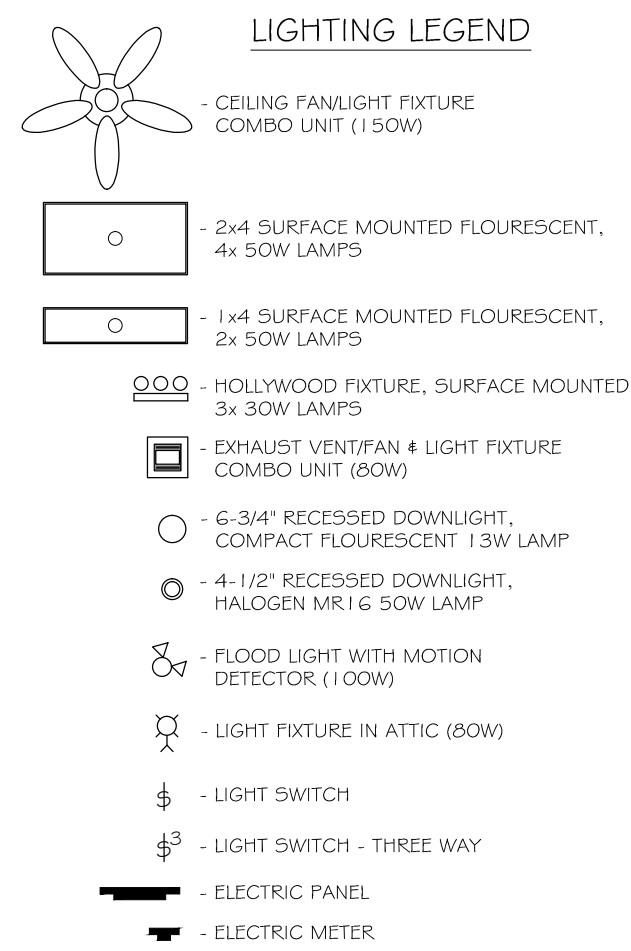


ELECTRICAL NOTES

- DRAWINGS ARE DIAGRAMMATIC ONLY. FURNISH ALL CONDUIT, RINGS, PANELS, BREAKERS, DISCONNECTS, ACCESSORIES, ETC. FOR COMPLETE INSTALLATION RATHER OR NOT EVERY ITEM IS SHOWN OR SPECIFIED.
- THESE DRAWINGS ARE INTENDED AS GENERAL GUIDELINES FOR PURPOSES OF ESTABLISHING CERTAIN MIN. CRITERIA, AND DO NOT NECESSARILY REPRESENT THE FINAL LAYOUT. ARRANGEMENT, SIZE, BRAND NAME, CAPACITY OR OTHER CHARACTERISTICS OF THE ENGINEERED SYSTEM SHALL BE DESIGNED IN ACCORDANCE WITH ALL APPLICABLE CODES, STANDARDS AND REQUIREMENTS OF LOCAL UTILITY OFFICIALS.
- INSTALL GFI OUTLETS AS REQUIRED BY APPLICABLE CODES. INSTALL GROUND FAULT RECEPTACLES AT RECEPTACLE LOCATIONS WITHIN 5' OF SINKS OR LAVATORIES, AND AT EXTERIOR LOCATIONS. EXTERIOR RECEPTACLES SHALL ALSO BE WEATHERPROOF.
- INSTALL HARDWIRED SMOKE DETECTORS WITH BATTERY BACKUP AS REQUIRED. INTER-CONNECT DETECTORS SO THAT ALL BELL SOUND SHOULD ONE DETECTOR ACTIVATE.
- SOME EQUIPMENT SHOWN ON OTHER PLANS MAY REQUIRE ELECTRICAL SERVICE, SUCH AS WATER HEATER, CONDENSING UNITS, AIR-HANDLING UNITS, CONDENSATE PUMPS, ETC.. ELECTRICAL CONTRACTOR SHALL INCLUDE ELECTRICAL SERVICE TO ALL SUCH EQUIPMENT. COORDINATE WITH OTHER TRADES CONCERNING CONCERNING ITEMS REQUIRING ELECTRICAL SERVICE. PROVIDE ONE DUPLEX OUTLET AND LIGHT IF UNIT IS IN NON-LIT AREA FOR EVERY CONDENSING UNIT AND EVERY AIR-HANDLING UNIT AS REQUIRED BY APPLICABLE CODES.
- OBTAIN NAME PLATE AND RATINGS OF ALL EQUIPMENT BEFORE ROUGHING IN AND PROVIDE WIRING OF PROPER SIZE, VOLTAGE, AND AMPACITY. PROVIDE FUSED OR NON-FUSED DISCONNECT SWITCH AS REQUIRED.
- PROVIDE PANEL BOARDS OF PROPER VOLTAGE AND AMPACITY FOR ALL ELECTRICAL CIRCUITS.
- VERIFY SERVICE REQUIREMENTS WITH LOCAL POWER COMPANY INCLUDING TRANSFORMER, LOCATIONS AND TYPES, DISCONNECTS AT EXTERIOR OF BUILDING, VOLTS AND AMPACITIES AND OTHER DETAILS OF ELECTRICAL CONSTRUCTION. SIZE ALL FEEDERS ACCORDING TO NEC REQUIREMENTS.
- RUN ALL CABLE CONCEALED IN WALLS, CEILING OR FLOORS UNLESS NOTED OTHERWISE.
- SUPPORT ALL FIXTURES AND OTHER ITEMS RIGIDLY FROM STRUCTURE.
- INSULATE AND SEAL SOLIDLY BEHIND RECEPTACLES IN EXTERIOR WALLS.
- ALL SWITCHES AND OUTLETS ON FIRST FLOOR TO BE 1'-0" ABOVE BASE FLOOR ELEVATION.
- WHERE MORE THAN ONE SWITCH OCCURS IN THE SAME LOCATION, THEY SHALL BE INSTALLED IN A GANG TYPE BOX UNDER ONE COVER PLATE.
- ALL OUTLETS SHALL BE INSTALLED 18" AFF UNLESS NOTED OTHERWISE. SEE ELECTRICAL POWER PLAN FOR INDICATED MOUNTING HEIGHT.
- REFER TO REFLECTED CEILING PLAN FOR RECESSED LIGHT FIXTURE LOCATIONS.



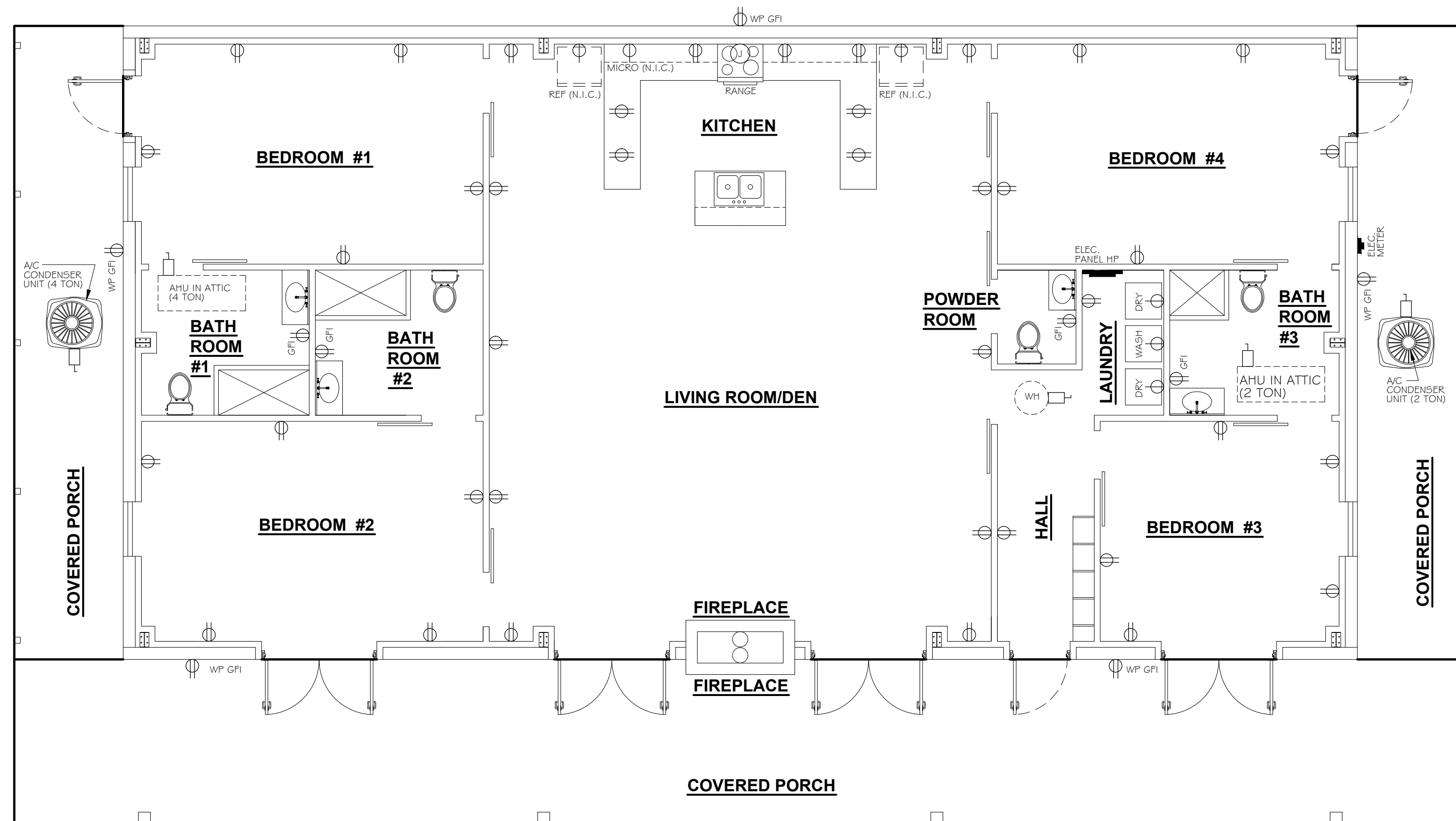
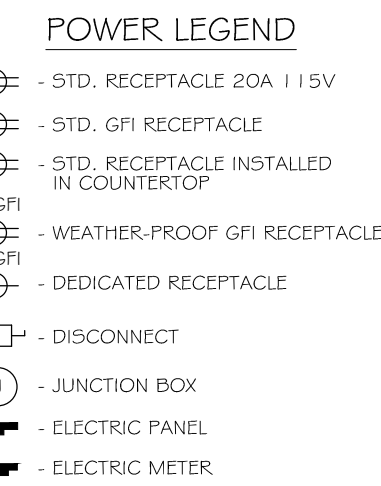
**2 LIGHTING PLAN**  
SCALE: 3/16" = 1'-0"

PANEL HP  
LOCATION: LAUNDRY ROOM  
FEEDER SOURCE: ELECTRIC UTILITY COMPANY

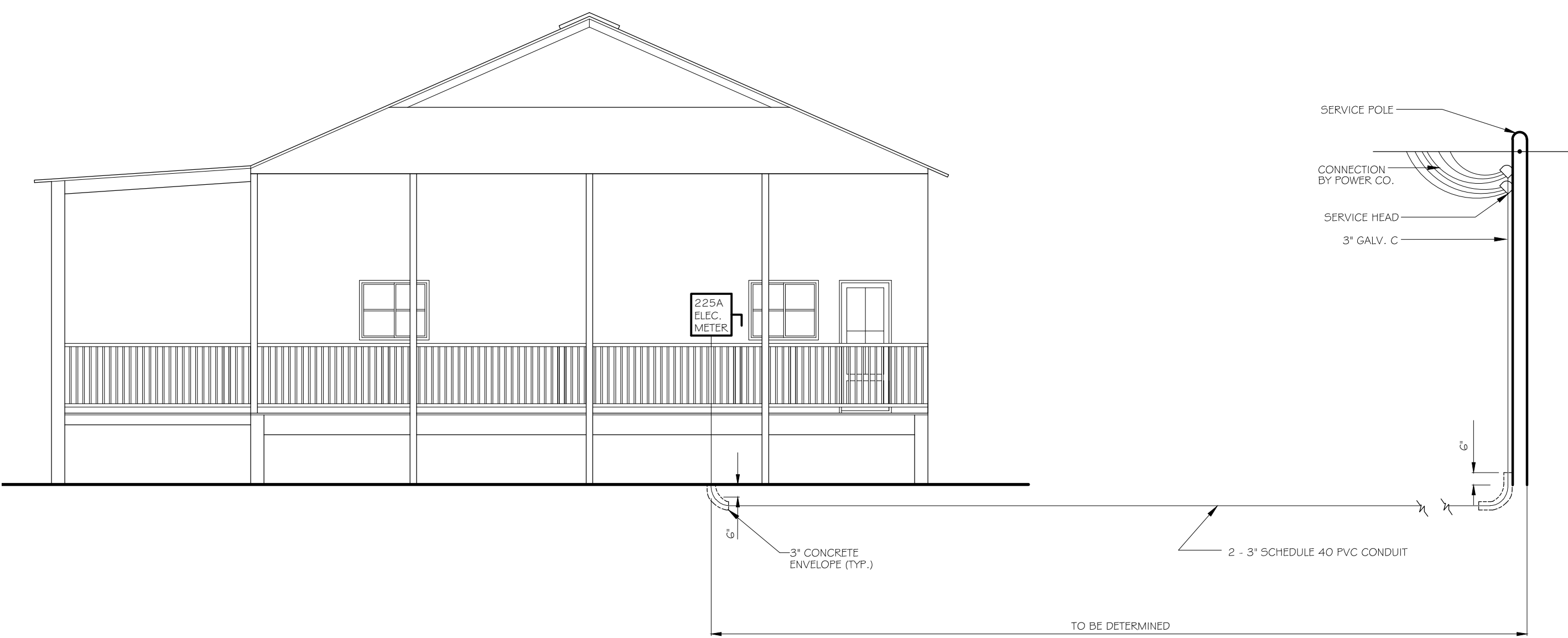
VOLTAGE: 120/240V, 225A 1Ø, 3W  
ENCLOSURE: SURFACE MOUNTED, 225 MB, WEQUIPMENT GND BAR

CCT NO.	TRIP SIZE	LOAD DESCRIPTION	DWY	POLE	LOAD (VA)	TRIP SIZE	LOAD DESCRIPTION	DWY	POLE	LOAD (VA)	CCT NO.
1	#8	A/C CONDENSING UNIT 4 TON	40	2	3000	#8	AIR HANDLING UNIT 2 TON TO W/ HEAT	2	45	360	#8
3	#10	A/C CONDENSING UNIT 2 TON	20	2	1440	#10	AIR HANDLING UNIT 2 TON TO W/ HEAT	2	60	360	#10
5	#10	DEDICATED 220V RECEPTACLE IN LAUNDRY ROOM FOR DRYER	20	2	2500	#10	DEDICATED 220V RECEPTACLE IN LAUNDRY ROOM FOR DRYER	2	30	2500	#10
7	#10	DEDICATED 220V RECEPTACLE IN LAUNDRY ROOM FOR DRYER	20	2	2500	#10	DEDICATED 220V RECEPTACLE IN LAUNDRY ROOM FOR DRYER	2	30	2500	#10
9	#10	DEDICATED 220V RECEPTACLE IN LAUNDRY ROOM FOR DRYER	20	2	2500	#10	DEDICATED 220V RECEPTACLE IN LAUNDRY ROOM FOR DRYER	2	30	2500	#10
11	#10	DEDICATED 220V RECEPTACLE IN LAUNDRY ROOM FOR DRYER	20	2	2500	#10	DEDICATED 220V RECEPTACLE IN LAUNDRY ROOM FOR DRYER	2	30	2500	#10
13	#10	DEDICATED 220V RECEPTACLE IN LAUNDRY ROOM FOR DRYER	20	2	2500	#10	DEDICATED 220V RECEPTACLE IN LAUNDRY ROOM FOR DRYER	2	30	2500	#10
15	#10	DEDICATED 220V RECEPTACLE IN LAUNDRY ROOM FOR DRYER	20	2	2500	#10	DEDICATED 220V RECEPTACLE IN LAUNDRY ROOM FOR DRYER	2	30	2500	#10
17	#12	RECEPTACLES IN LIVING ROOM DEN AREA ALONG LEFT WALL	20	1	900	#12	RECEPTACLES IN LIVING ROOM DEN AREA ALONG RIGHT WALL	20	1	900	#12
19	#12	RECEPTACLES IN KITCHEN AREA 4 W/P GFI RECEPTACLE ON REAR EXTERIOR WALL	20	1	1440	#12	RECEPTACLES IN KITCHEN AREA 4 W/P GFI RECEPTACLE ON REAR EXTERIOR WALL	20	1	1440	#12
21	#12	DEDICATED RECEPTACLE FOR REFRIGERATOR	20	1	180	#12	DEDICATED RECEPTACLE FOR REFRIGERATOR	20	1	180	#12
23	#12	DEDICATED RECEPTACLE FOR MICROWAVE	20	1	180	#12	DEDICATED RECEPTACLE FOR MICROWAVE	20	1	180	#12
25	#12	BEDROOM #1 RECEPTACLES, BATHROOM #1 GFI RECEPTACLE 4 W/P GFI RECEPTACLE	20	1	1260	#12	BEDROOM #2 RECEPTACLES, BATHROOM #2 GFI RECEPTACLE 4 W/P GFI RECEPTACLE	20	1	1260	#12
27	#12	HALL & LAUNDRY STANDARD RECEPTACLES, 4 POWDER ROOM GFI RECEPTACLE	20	1	540	#12	HALL & LAUNDRY STANDARD RECEPTACLES, 4 POWDER ROOM GFI RECEPTACLE	20	1	540	#12
29	#12	DEDICATED RECEPTACLE IN LAUNDRY FOR WASHING MACHINE	20	1	180	#12	DEDICATED RECEPTACLE IN LAUNDRY FOR WASHING MACHINE	20	1	180	#12
31	#12	LIVING ROOM DEN 4 KITCHEN AREA LIGHTS 4 CEILING FAN, BATHROOM 3 LIGHTS 4 EXHAUST FAN	20	1	700	#12	BEDROOMS 1 & 2 LIGHTS 4 CEILING FANS, BATHROOMS 1 & 2 LIGHTS 4 EXHAUST FANS	20	1	700	#12
33	#12	COVERED PORCHES LIGHTS 4 ATTIC LIGHT	20	1	400	#12	COVERED PORCHES LIGHTS 4 ATTIC LIGHT	20	1	400	#12
35	-	SPARE	20	1	-	-	SPARE	20	1	-	-
37	-	SPARE	20	1	-	-	SPARE	20	1	-	-
39	-	SPARE	20	1	-	-	SPARE	20	1	-	-
41	-	SPARE	20	1	-	-	SPARE	20	1	-	-
					TOTAL CONNECTED LOAD (VA) = 73,060						
					480 = 36,540						
					800 = 36,520						

NOTE: 1. ALL SINGLE POLE BREAKERS SHALL BE ARC FAULT  
2. REINSTALL MANUFACTURER RECOMMENDED BREAKERS FOR HVAC AND APPLIANCES INSTALLED.



**1 POWER PLAN**  
SCALE: 3/16" = 1'-0"



**ELECTRICAL SERVICE DETAIL**  
NTS

REVISIONS

#	DATE	DESCRIPTION

PRELIMINARY  
NOT FOR  
CONSTRUCTION

A MULTIPLE USE BUILDING FOR  
THE HINES PROPERTY IN  
HANCES COUNTY  
MISSISSIPPI

1084 JOHN AVACKER ROAD  
POPLARVILLE, MS 39470

JOB No: 221B DATE: 12-10-14  
DRAWN BY: JTL CHECKED BY: GKD