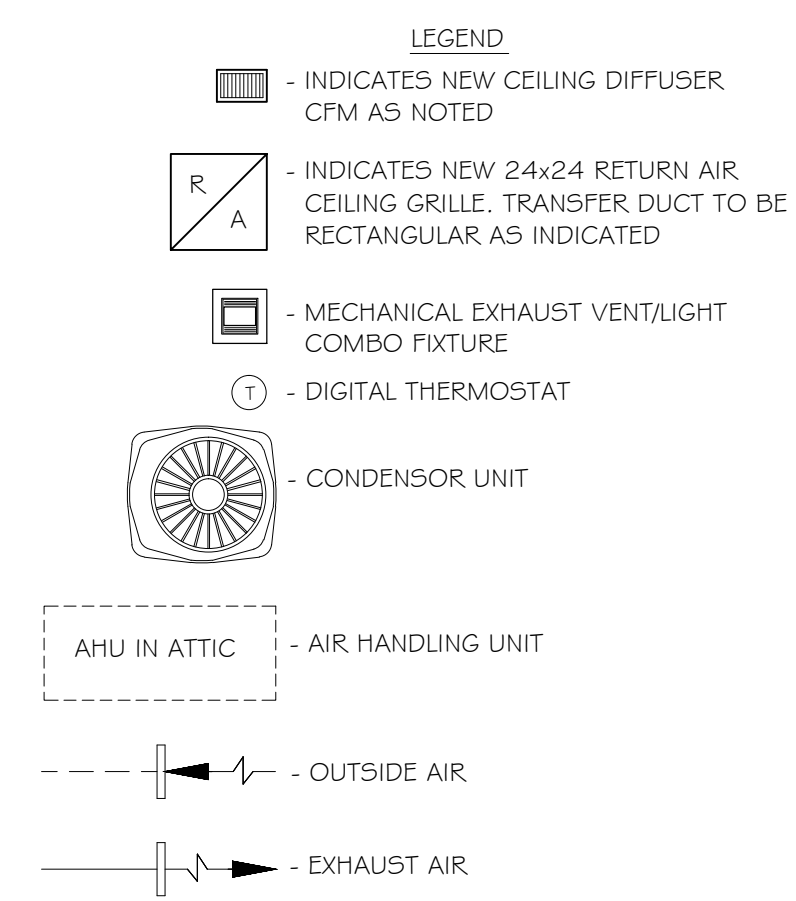
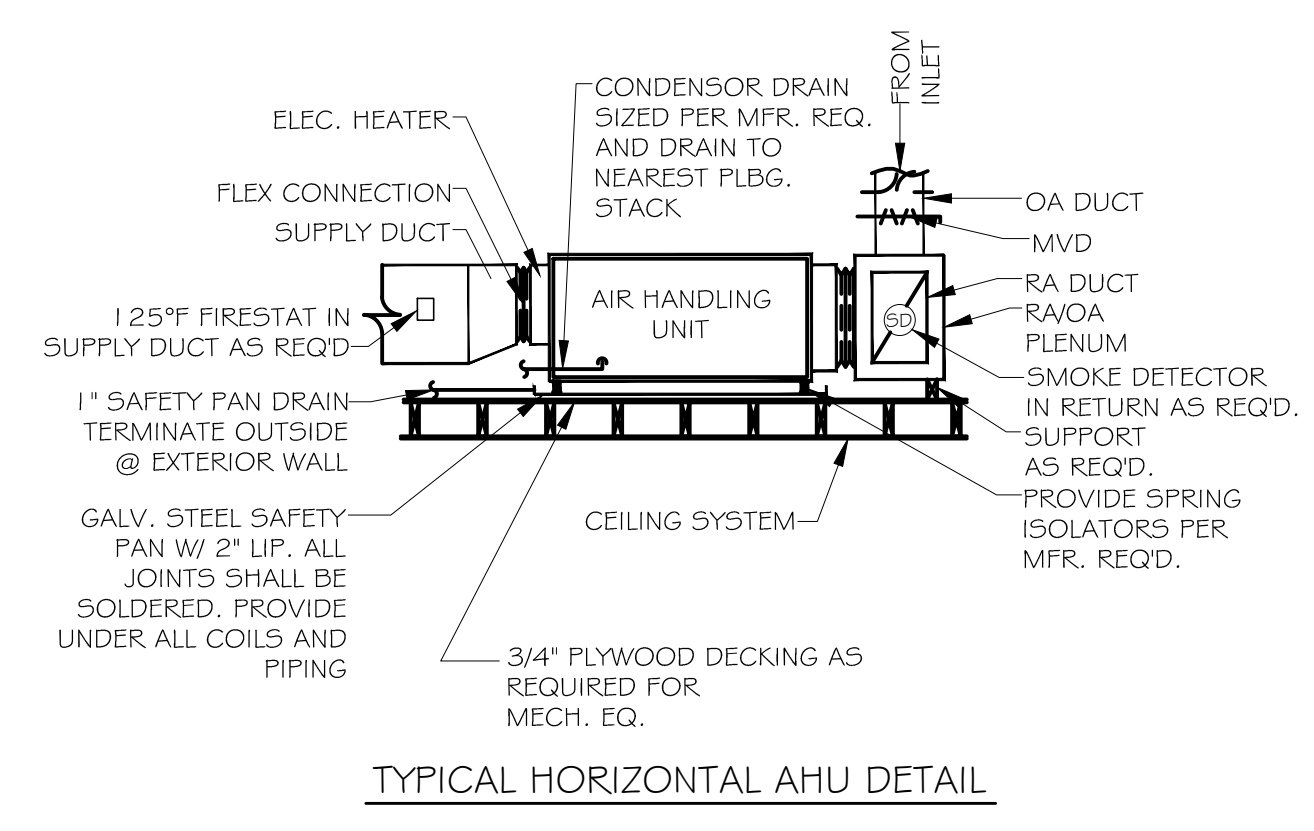
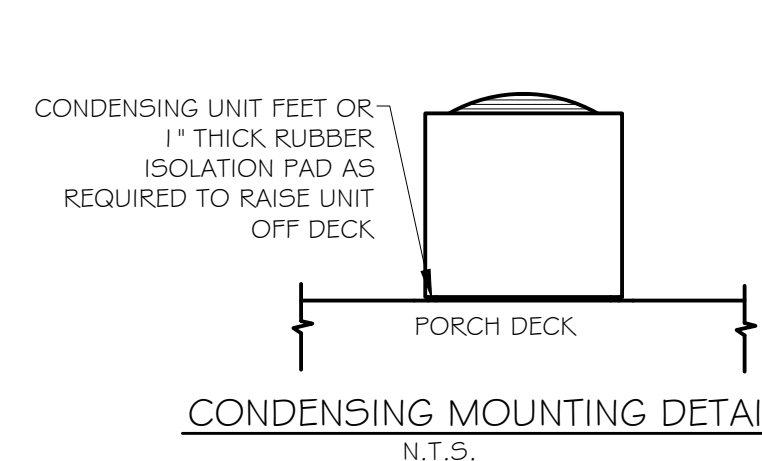
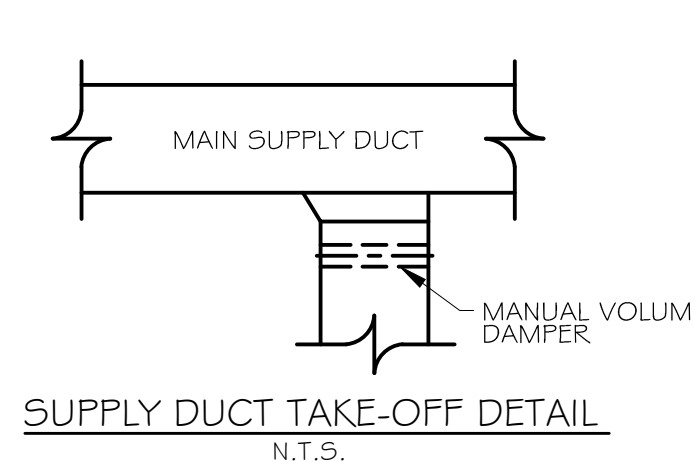
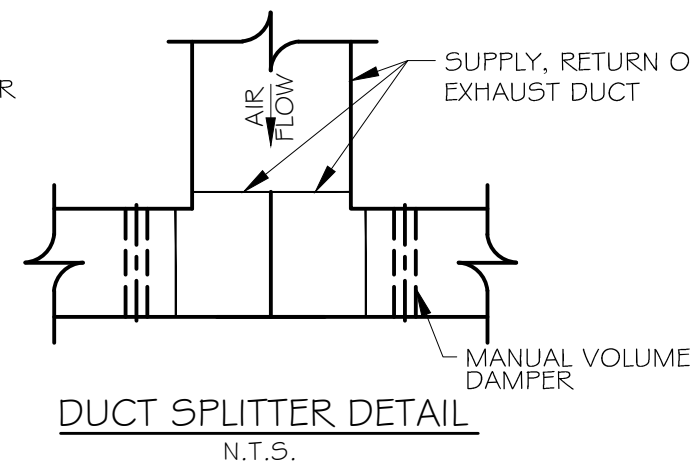
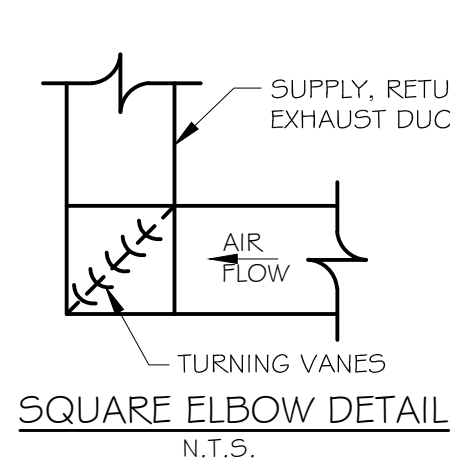


A/C CONDENSER UNIT SCHEDULE						
TOTAL HVAC TONS = 6						
NO.	TOTAL BTU	TOTAL TONNAGE	VOLTAGE	ELECTRICAL MCA	CKT BRKR	MANUFACTURER
1	48,000	4 TON	120/240 1Ø	25	HP-1,3	TRANE OR EQUAL
2	24,000	2 TON	120/240 1Ø	12	HP-5,7	

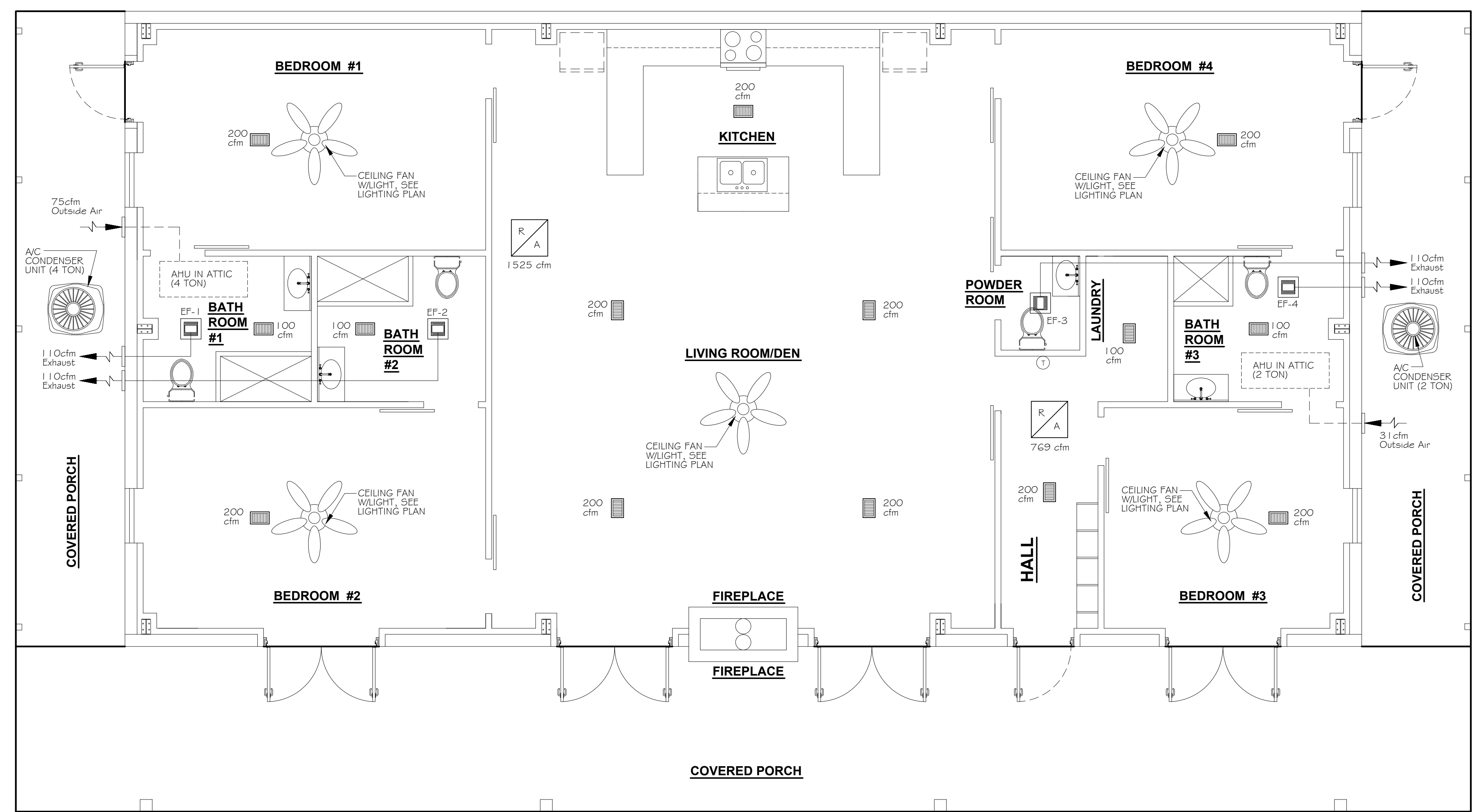
A/C AIR HANDLING UNIT SCHEDULE								
TOTAL HVAC TONS = 6								
NO.	TOTAL BTU	CFM	O.A.	HEAT ELEC.	ELECTRICAL VOLTAGE	MCA	CKT BRKR	MANUFACTURER
1	48,000	1,600	75	10 kw	120/240 1Ø	53	HP-2,4	TRANE OR EQUAL
1	24,000	800	31	5 kw	120/240 1Ø	52	HP-6,8	

NOTE: ALL AIR HANDLING UNITS TO HAVE A SINGLE-POINT CONNECTION FOR THE BLOWER & HEATING ELEMENT.

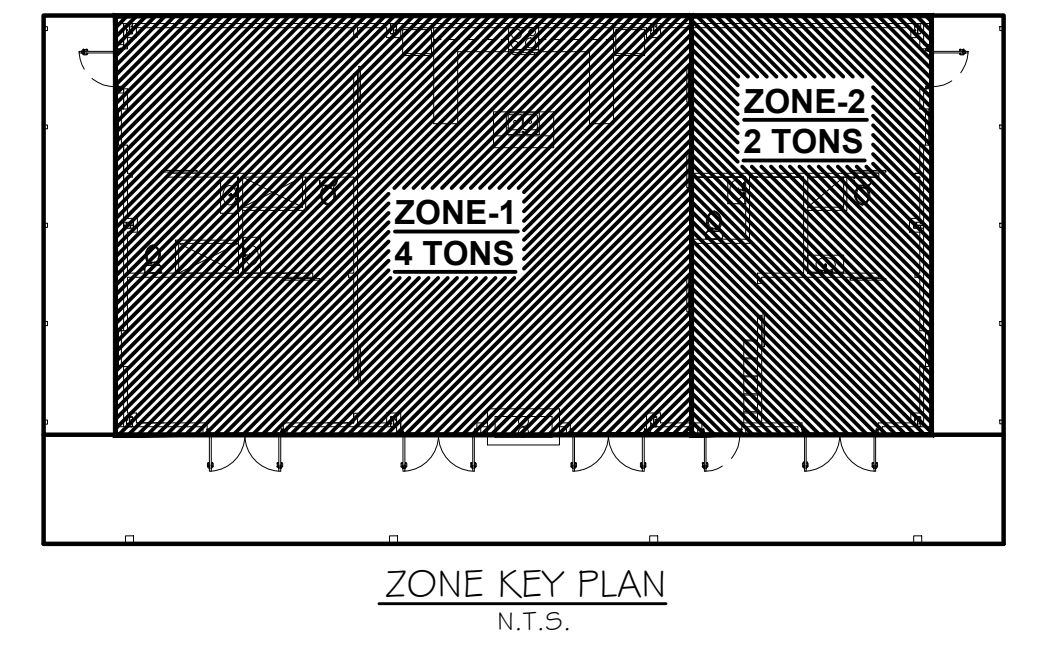
FRESH AIR REQUIREMENTS PER IMC 2009 TABLE 40B.9					
AREA NAME	SF	OCC/1000 SF	CFM/OCC	CFM/SF	TOTAL OA
ZONE-1	1676	3.0	15.0	-	75
ZONE-2	698	3.0	15.0	-	31



- MECHANICAL NOTES**
- SYSTEM SHALL BE DESIGNED IN ACCORDANCE WITH ALL APPLICABLE CODES, STANDARDS, AND REQUIREMENTS OF LOCAL UTILITY OFFICIALS. DESIGN ENGINEER SHALL PREPARE CALCULATIONS FOR EQUIPMENT SIZING, DUCT SIZING, ACCESSORY ARRANGEMENT, ETC., AND SHALL PREPARE FINAL DRAWING ACCORDINGLY.
 - FURNISH ALL DUCT WORK, CONTROL WIRING, PIPING, FITTINGS, ACCESSORIES, ETC. FOR COMPLETE INSTALLATION.
 - INSULATE ALL HEATING OR CONDENSER WATERLINES IN UN-INSULATED SPACES WITH TUBULAR FOAM INSULATION. INSULATION SHALL BE OF SELF SEALING TYPE OR SHALL BE TAPED CLOSED W/FOIL FACED TYPE.
 - CLOSELY COORDINATE WORK WITH ALL OTHER TRADES. MAINTAIN CEILING HEIGHTS AND DUCT SPACES PROVIDED.
 - ALL VALVES, DAMPERS AND OTHER CONTROL DEVICES SHALL BE ACCESSIBLE FOR OPERATION AND MAINTENANCE THROUGH ACCESSIBLE CEILINGS OR THROUGH ACCESS DOORS OR PANELS MANUFACTURED FOR SUCH PURPOSES.
 - ALL UNITS ABOVE CEILING SHALL HAVE AUXILIARY DRAIN PANS INSTALLED BELOW ENTIRE UNIT.
 - COORDINATE WITH ELECTRICIAN CONCERNING ITEMS REQUIRING ELECTRICAL SERVICE SUCH AS CONDENSING UNITS, AIR-HANDLING UNITS, CONDENSATE PUMPS, MOTORIZED DAMPERS, ETC. COORDINATE SERVICE AND AMPACITY REQUIRED.
 - THE BUILDER SHALL TEST PRESSURE-REDUCING VALVES, T&P RELIEF VALVES AND OTHER SAFETY DEVICES PRIOR TO OPERATING SYSTEM. THE BUILDER SHALL TEST AND BALANCE ALL SYSTEMS PRIOR TO COMPLETION OF THE WORK.



1 MECHANICAL PLAN
SCALE: 1/4" = 1'-0"



DAMMON ENGINEERING, INC.
Architects & Engineers

Chief Engineer: Brian Misch, PE
554 Old Spanish Trail
Slidell, LA 70688

www.dammonengineering.com
info@dammonengineering.com
PH: 985.649.9832 F: 985.641.9590

DATE	REVISIONS	DESCRIPTION

SEAL:

A MULTI-USE BUILDING FOR
THE HINES PROPERTY IN
TANGIPLOUS COUNTY
MISSISSIPPI

1084 JOHN AWACKER ROAD
POPLARVILLE, MS 39470

JOB No: 221B DATE: 12-22-14
DRAWN BY: JTL CHECKED BY: GKD

SHEET TITLE:
MECHANICAL PLAN

DRAWING NUMBER:
M1

SHEET No: 1 of 1