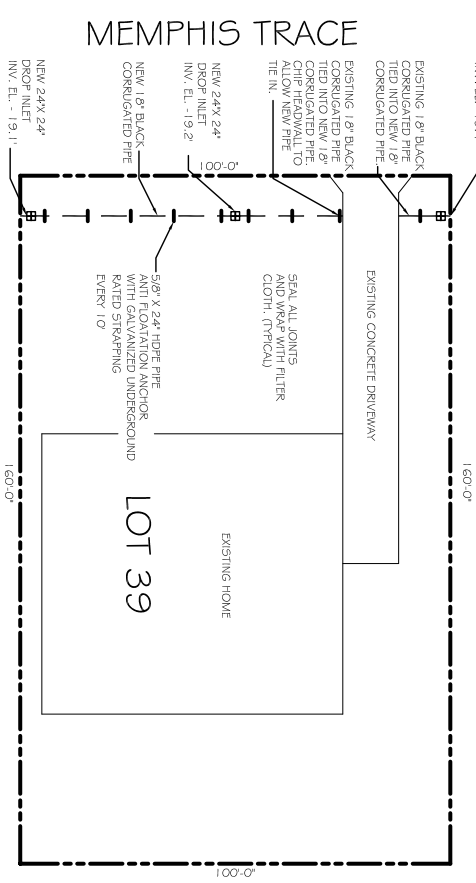


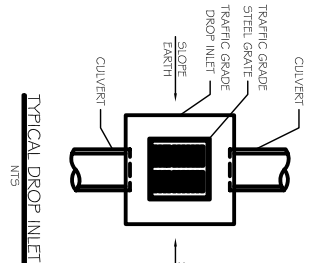
EXISTING SITE DRAINAGE PLAN  
SCALE: 1"=20'-0"



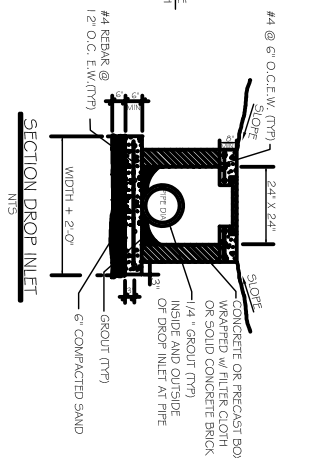
VICINITY SITE MAP  
SCALE: N.T.S.



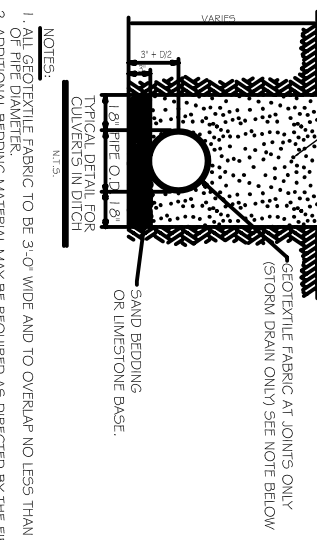
NEW SITE DRAINAGE PLAN  
SCALE: 1"=20'-0"



TYPICAL DROP INLET  
N.T.S.



SECTION DROP INLET  
N.T.S.



TYPICAL DETAIL FOR CULVERTS IN DITCH  
N.T.S.

LEGEND  
 --- PROPERTY LINE  
 --- NEW 24" X 24" DROP INLET  
 --- NEW 18" BLACK CORRUGATED CULVERT

GRANULAR BACKFILL IN 6" LAYERS @ 95% STD. PROCTOR OR TO SATISFACTION OF ENGINEERING FIELD REF. AND SOD.

NOTES:  
 1. 6" GEOTEXTILE FABRIC TO BE 3'-0" WIDE AND TO OVERLAP NO LESS THAN 1/2' AT JOINTS.  
 2. ADDITIONAL BEDDING MATERIAL MAY BE REQUIRED AS DIRECTED BY THE FIELD ENGINEER.



REVISIONS		
#	DESCRIPTION	DATE

**DAMMON**  
 ENGINEERING, INC.  
*Architects & Engineers*

Chief Architect: Kevin J. Kinchen, NCARB  
 Chief Engineer: Brian Mistich, PE  
 554 Old Spanish Trail  
 Slidell, LA 70458

www.dammonengineering.com  
 info@dammonengineering.com  
 P: 985.649.5832  
 F: 985.641.5950

SHEET TITLE:  
 NEW DRAINAGE PLAN

DRAWING NUMBER:  
**c100**

JOB No: 6302015 DATE: 7/22/15  
 DRAWN BY: JTL CHECKED BY: CKD