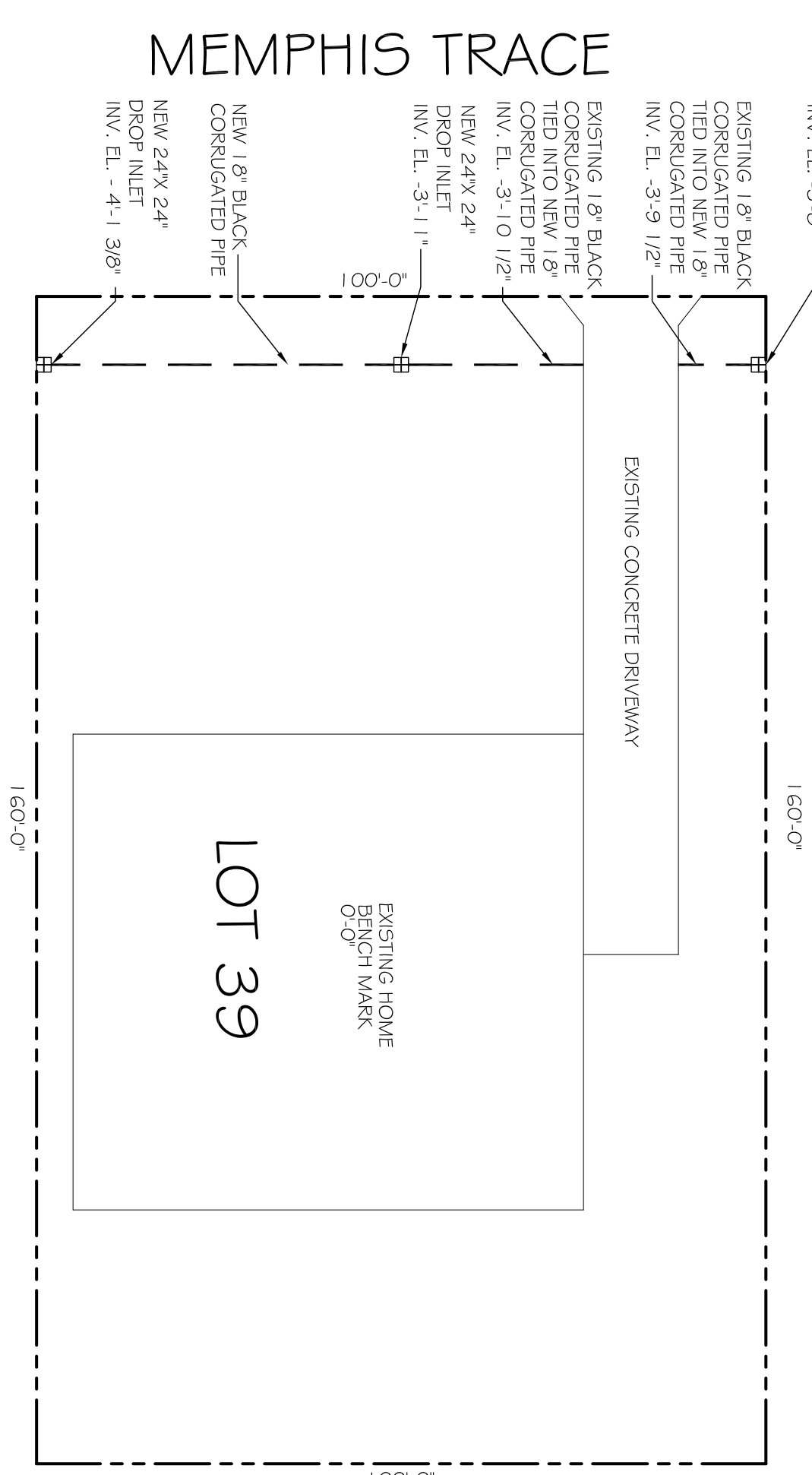
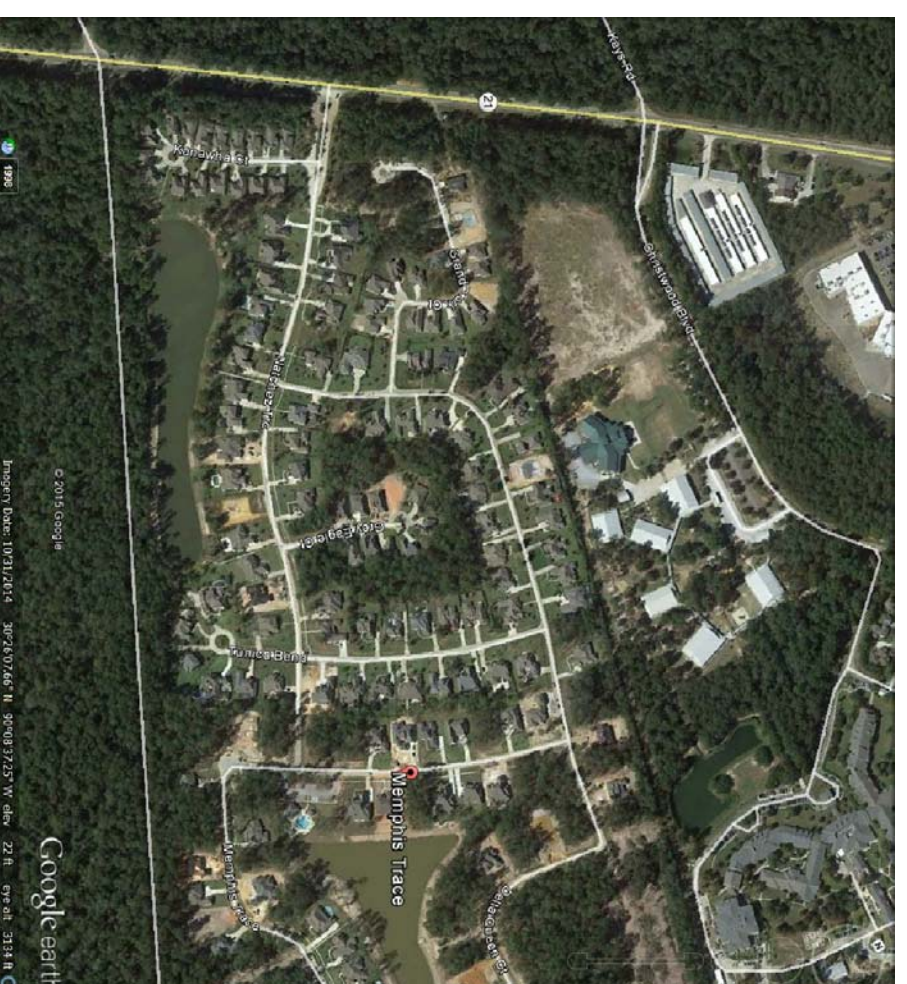
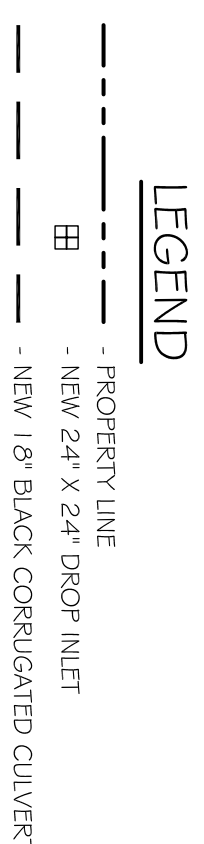


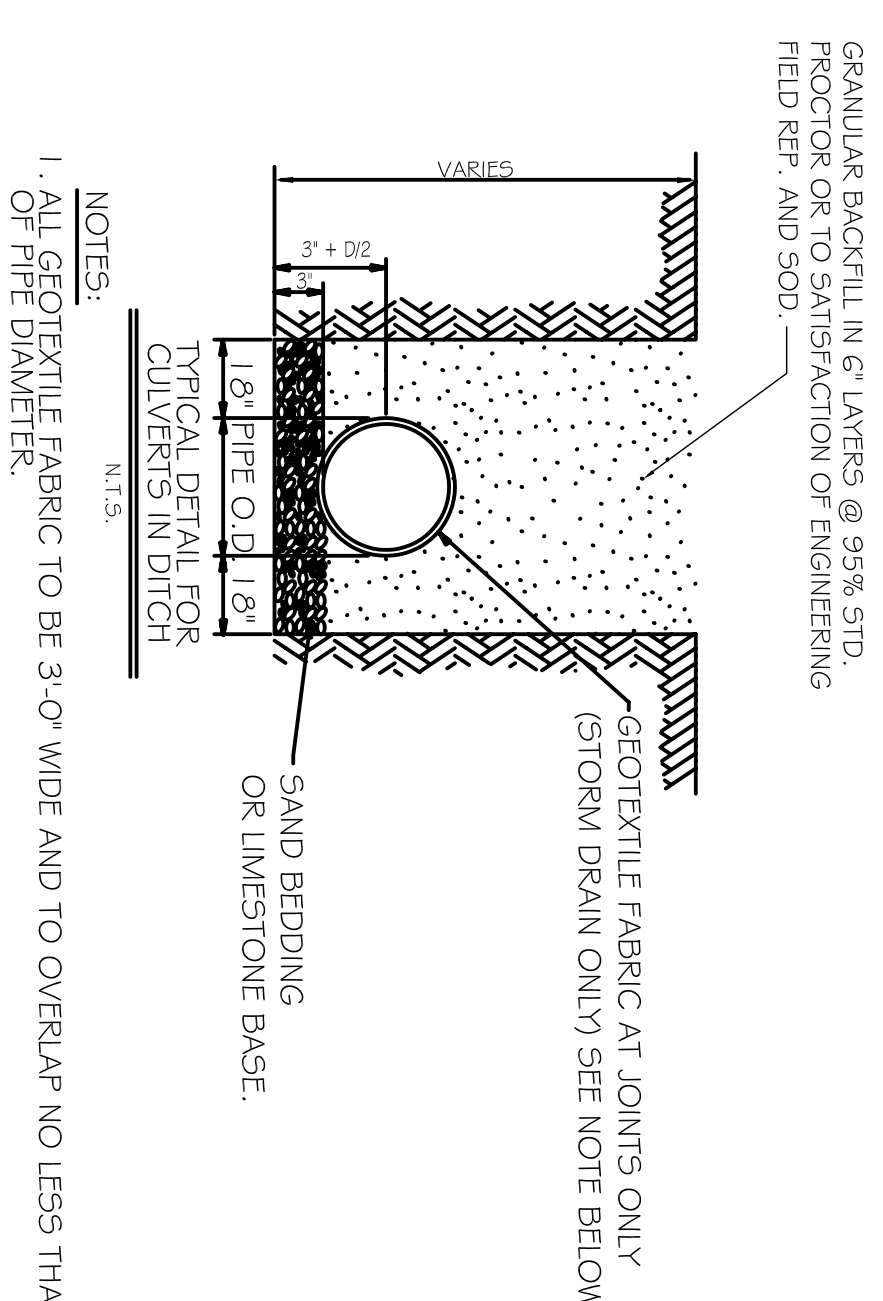
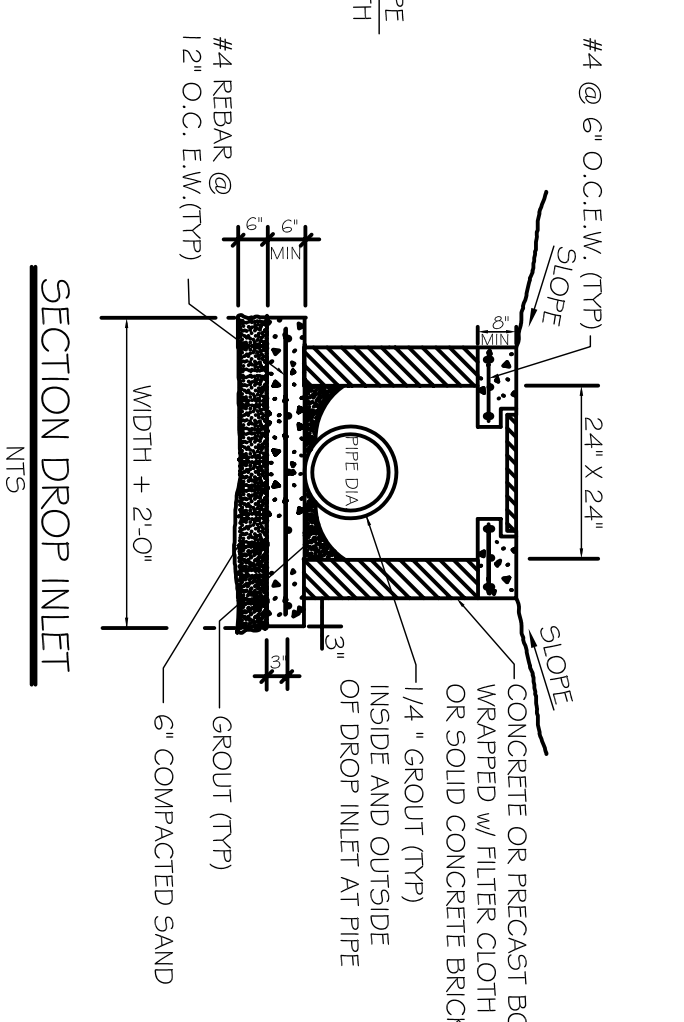
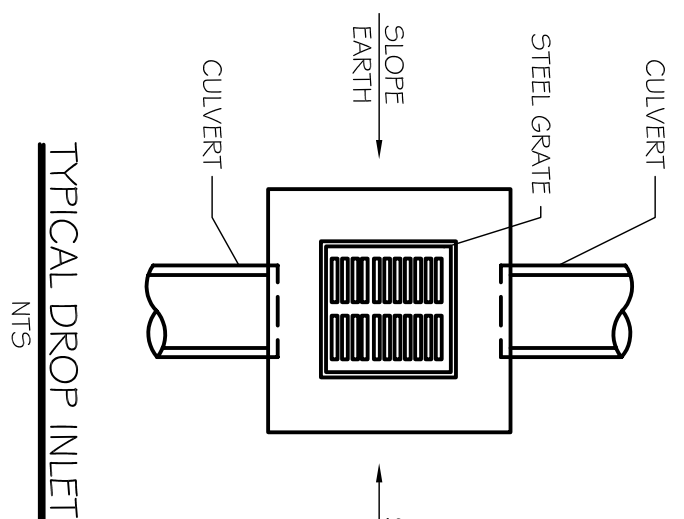
EXISTING SITE DRAINAGE PLAN
SCALE: 1"=20'-0"



NEW SITE DRAINAGE PLAN
SCALE: 1"=20'-0"



VICINITY SITE MAP
SCALE: N.T.S.



- NOTES:
1. ALL GEOTEXTILE FABRIC TO BE 3'-0" WIDE AND TO OVERLAP NO LESS THAN 1/2' OF PIPE DIAMETER.
2. ADDITIONAL BEDDING MATERIAL MAY BE REQUIRED AS DIRECTED BY THE FIELD ENGINEER.

DAMMON
ENGINEERING, INC.

Architects & Engineers
www.dammonengineering.com
Chief Architect: Kevin J. Kinchen, NCARB
Chief Engineer: Brian Mistich, PE
554 Old Spanish Trail
Stidell, LA 70458
PH: 985.649.5832
F: 985.641.5950

REVISIONS		DATE
#	DESCRIPTION	

JOB No: 6302015		DATE:	
DRAWN BY: JTL		CHECKED BY: CKD	
SHEET TITLE: NEW DRAINAGE PLAN			
DRAWING NUMBER:			
SHEET No: 1 OF 1			

MEMPHIS
TRACE
COVINGTON LA

100