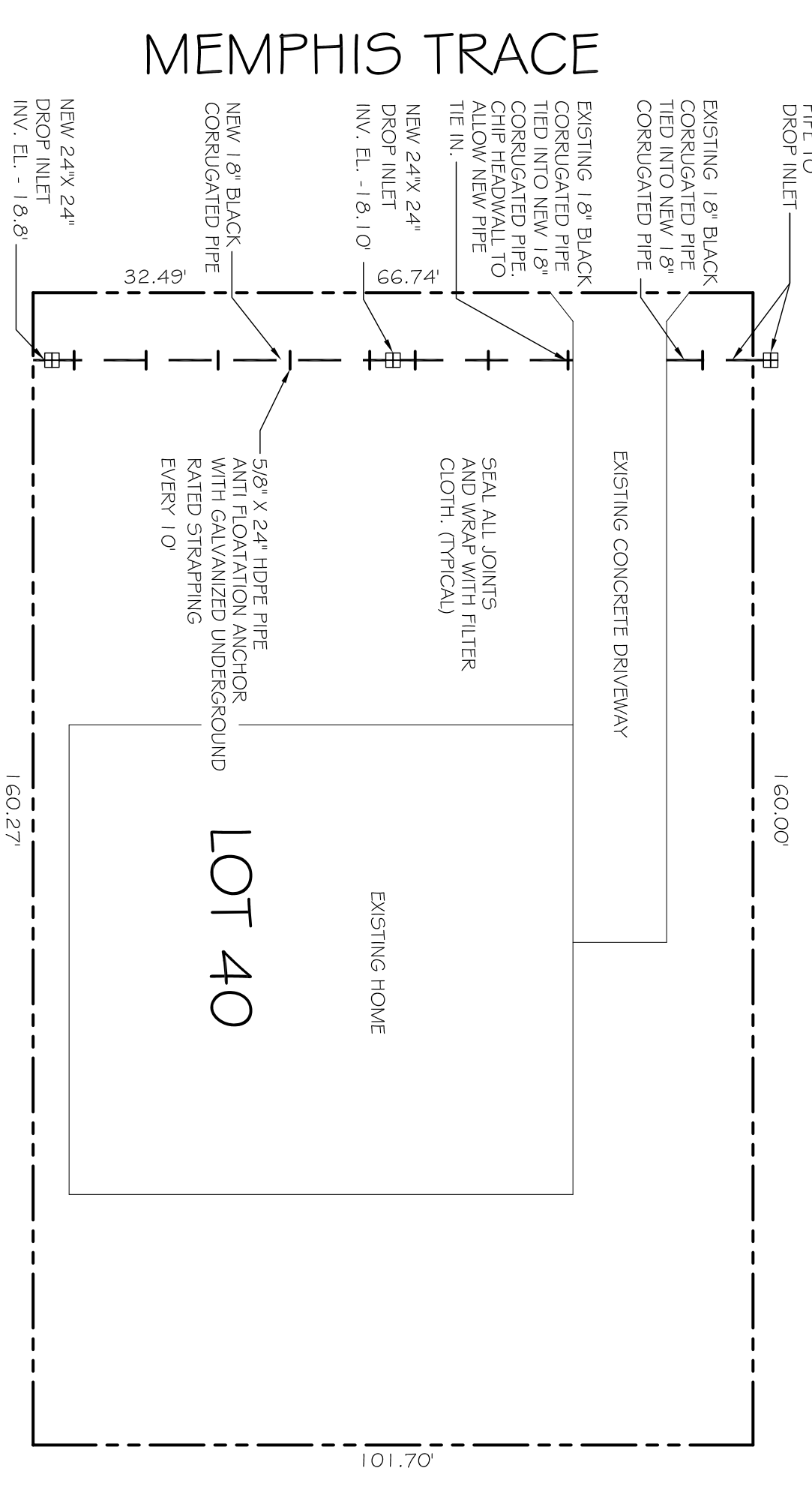
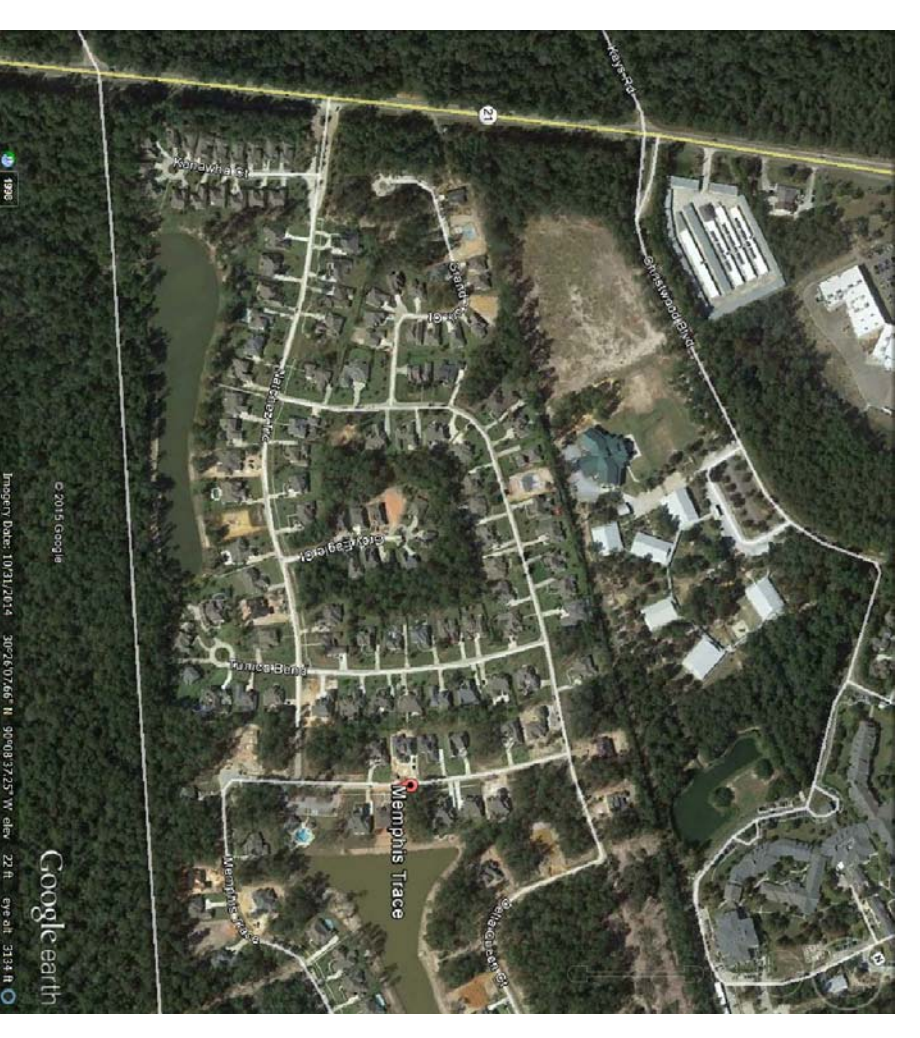


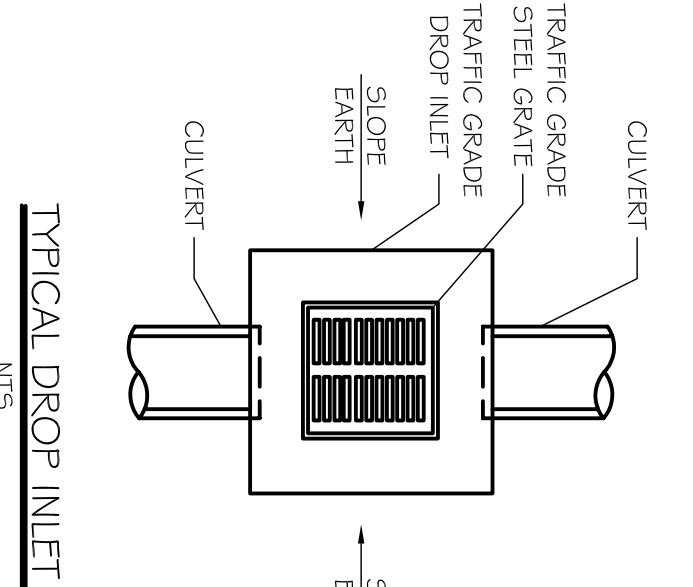
EXISTING SITE DRAINAGE PLAN
SCALE: 1"=20'-0"



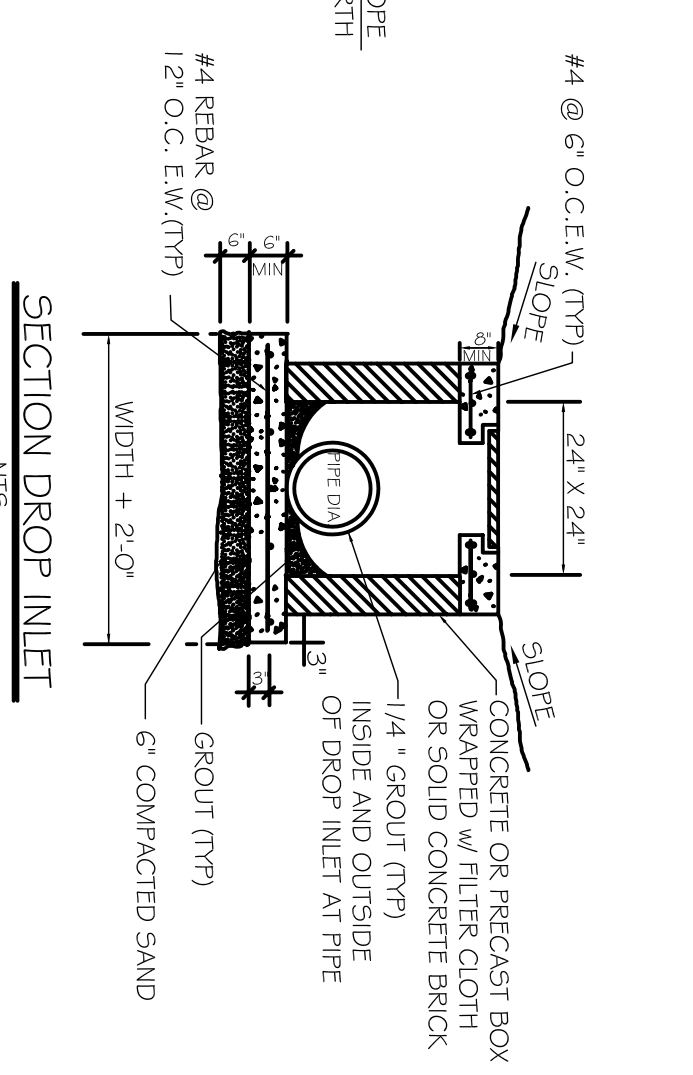
NEW SITE DRAINAGE PLAN
SCALE: 1"=20'-0"



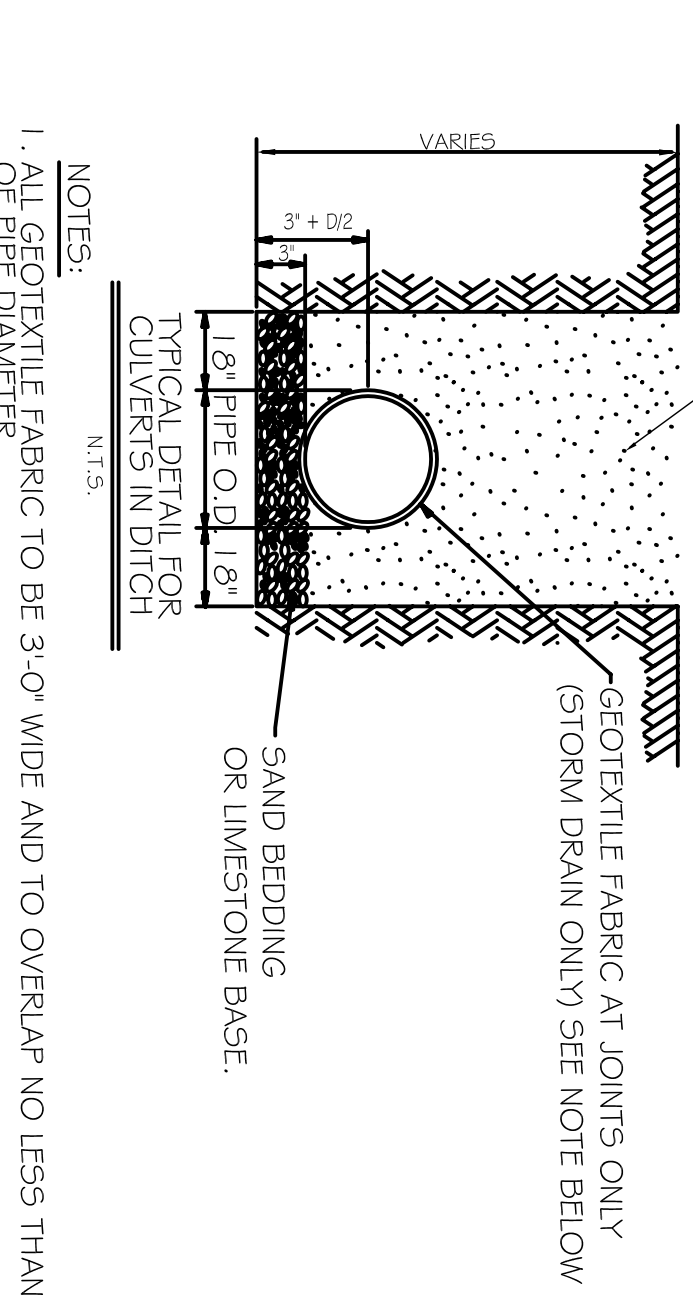
VICINITY SITE MAP
SCALE: N.T.S.



TYPICAL DROP INLET
N.T.S.



SECTION DROP INLET
N.T.S.



- NOTES:
1. ALL GEOTEXTILE FABRIC TO BE 3'-0" WIDE AND TO OVERLAP NO LESS THAN 1/2 OF PIPE DIAMETER.
2. ADDITIONAL BEDDING MATERIAL MAY BE REQUIRED AS DIRECTED BY THE FIELD ENGINEER.

- LEGEND
- PROPERTY LINE
- NEW 24" X 24" DROP INLET
- NEW 1.5" BLACK CORRUGATED CULVERT

REVISIONS		DATE
#	DESCRIPTION	

DAMMON ENGINEERING, INC.
Architects & Engineers

Chief Architect: Kevin J. Kinchen, NCARB
Chief Engineer: Brian Mistich, PE
554 Old Spanish Trail
Stidell, LA 70458

www.dammoneengineering.com
info@dammoneengineering.com
PH: 985.649.5832
F: 985.641.5950

DAMMON ENGINEERING, INC.
Architects & Engineers

Chief Architect: Kevin J. Kinchen, NCARB
Chief Engineer: Brian Mistich, PE
554 Old Spanish Trail
Stidell, LA 70458

www.dammoneengineering.com
info@dammoneengineering.com
PH: 985.649.5832
F: 985.641.5950

JOB No: 16302015 DATE: 7-7-15
DRAWN BY: CKD CHECKED BY: BAM

SHEET TITLE:
NEW DRAINAGE PLAN

DRAWING NUMBER:
c100

SHEET No: 1 OF 1