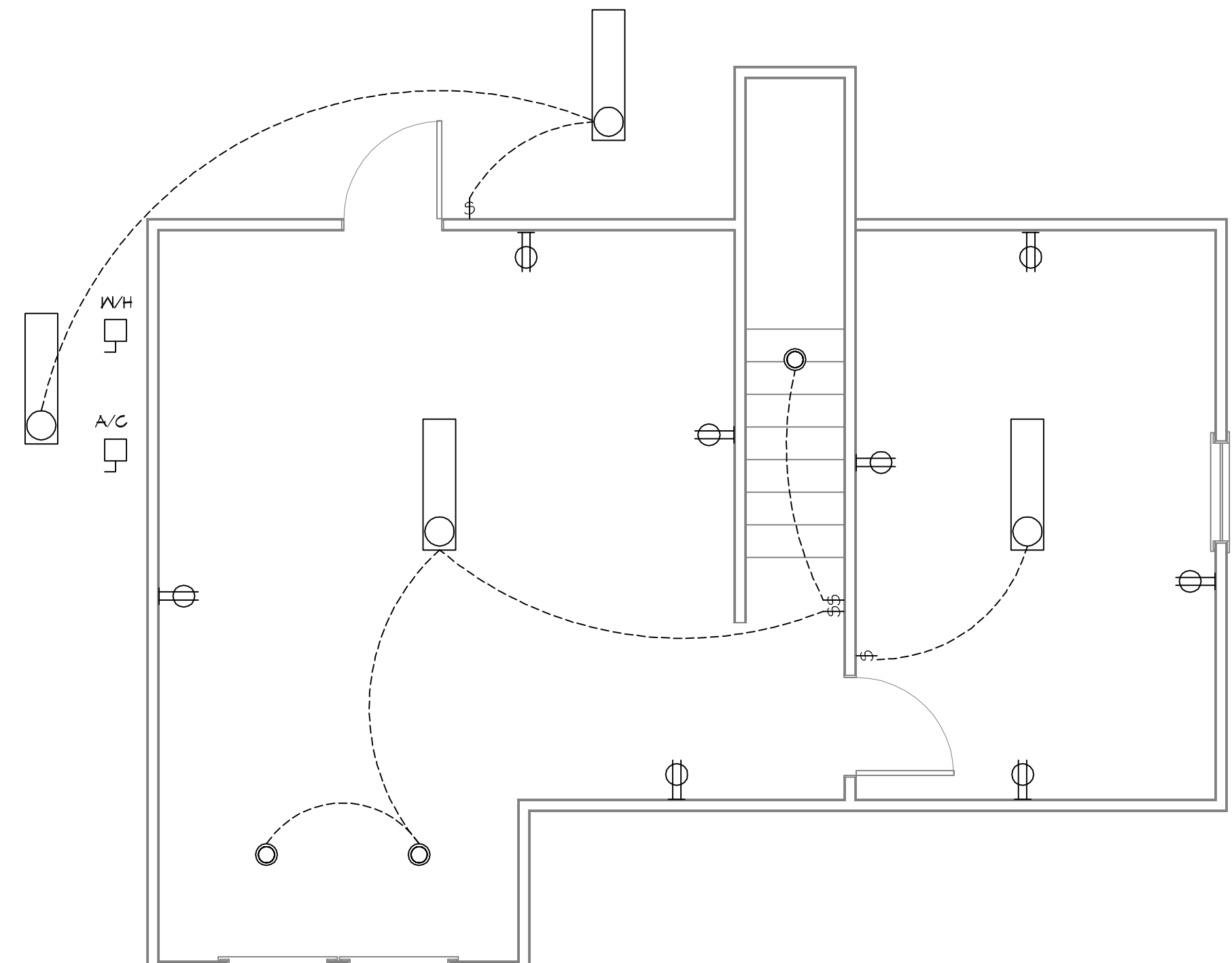
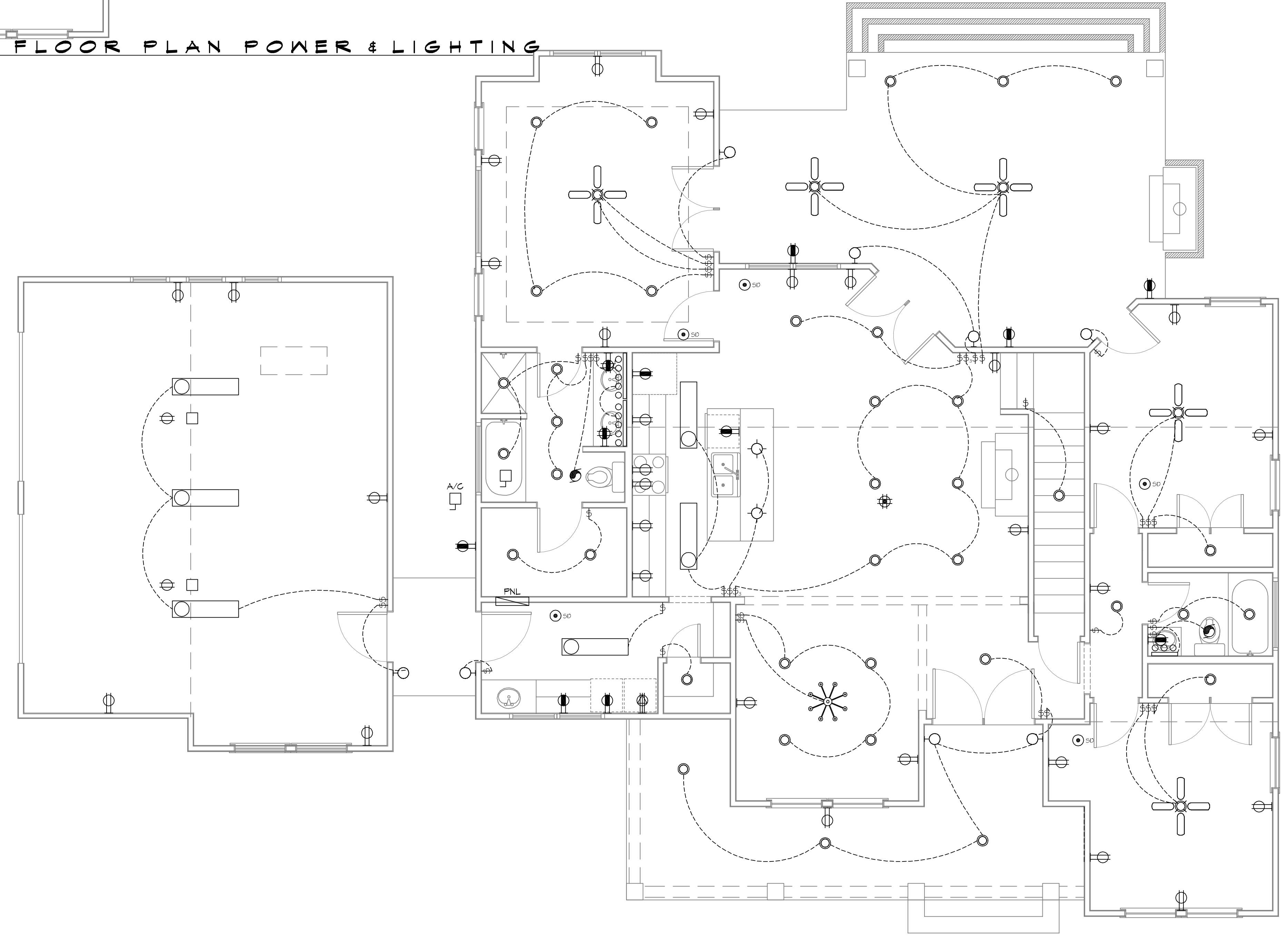


THE MAKE, A/C, REVISIONS, DAMMON ENGINEERING, INC., 554 Old Spanish Trail, Slidell, LA 70458, December 1, 2010 13:11:11



20 SECOND FLOOR PLAN POWER & LIGHTING
SCALE: 1/4" = 1'-0"



19 FIRST FLOOR PLAN POWER & LIGHTING
SCALE: 1/4" = 1'-0"

LIGHTING LEGEND

POWER LEGEND

SYMB

	STANDARD 120V DUPLEX RECEPTACLE, 18" AFF (UNLESS OTHERWISE NOTED)
	SINGLE-POLE DEDICATED RECEPTACLE
	GFCI DUPLEX RECEPTACLE
	DEDICATED GFCI DUPLEX RECEPTACLE
	240V RECEPTACLE - MOUNTED AT 30" AFF
	JUNCTION BOX
	WEATHER-PROOF GFCI DUPLEX RECEPTACLE MOUNTED AT 30" AFF (UNLESS OTHERWISE NOTED)
	STANDARD 120V DUPLEX RECEPTACLE - CEILING MOUNTED
	SINGLE POLE RECEPTACLE
	WALL MOUNTED DATA OUTLET
	QUAD OUTLET
	FUSED DISCONNECT, FUSE PER MANUFACTURERS RECOMMENDATIONS.

PRE-WIRE FOR THE FOLLOWING:

- TELEPHONE "ONE INCOMING LINE"
- CABLE VISION "ONE OUTLET PER ROOM MINIMUM"
- SECURITY SYSTEM - COORDINATE W/ OWNER
- COORDINATE ELECTRICAL SYSTEM WITH MECHANICAL CONTRACTOR
- ALL WIRING TO BE COPPER MIN. 12/2 W/ GROUND
- VERIFY LOCATION OF FLOOR OUTLETS IN FAMILY ROOM
- PROVIDE 110V OUTLET FOR GARAGE DISPOSAL UNDER KITCHEN SINK
- PROVIDE 110V OUTLET FOR WHIRLPOOL TUB MOTOR UNDER WHIRLPOOL TUB IN MASTER BATH
- PROVIDE 220V OUTLET FOR CLOTHES DRYER
- COORDINATE SURROUND SYSTEM W/ OWNER

ELECTRICAL NOTES:

- MAIN FEED INTO HOUSE TO BE TRENCHED UNDERGROUND FROM SUPPLY POLE TO METER THEN MAIN DISCONNECT OUTSIDE.
- ALL SMOKE DETECTORS TO BE ELECTRIC POWERED WITH BATTERY BACKUP AND WIRED TO SET ALL ALARMS OFF IF ONE IS TRIPPED.
- ALL EXTERIOR, KITCHEN, AND BATH OUTLETS TO BE GROUND FAULT CIRCUIT INTERRUPT EQUIPPED AND ON A SEPARATE CIRCUIT.
- ELECTRICAL DISCONNECTS ARE TO BE AT A/C UNIT, CONDENSING UNIT, AND WATER HEATER.
- HEAT VENT LIGHTS ARE TO BE ON A SEPARATE CIRCUIT.
- OUTLETS, INCLUDING PHONE AND CABLE, MAY BE ADDED OR CHANGED UPON OWNERS REQUEST.
- ELECTRICAL CONTRACTOR TO VERIFY EQUIPMENT TYPE AND SIZE.
- INSTALL LIGHTS IN ATTIC SPACE W/ SWITCH AT FOOT OF DISP. STAIRS
- ELECTRICAL SERVICE TO BE A 42 CIRCUIT 200 AMP MAIN LOCATED IN THE HOUSE.
- A SUB-PANEL MAY NEED TO BE ADDED FOR ENOUGH CIRCUITS.
- HOUSE TO BE WIRED FOR A SECURITY SYSTEM.
- ALL KITCHEN OUTLETS ARE TO BE GFI EXCEPT APPLIANCE OUTLETS NOT EASILY ACCESSIBLE.
- ARC FAULT BREAKERS ARE TO BE USED IN ALL BEDROOMS.
- IF GAS FIRED APPLIANCES ARE USED IN HOME, CARBON MONOXIDE ALARMS ARE NEEDED (IRC R315).

DAMMON ENGINEERING, INC.
 LOUISIANA & MISSISSIPPI
 Chief Engineer: Brian Mistich, PE
 554 Old Spanish Trail
 Slidell, LA 70458
 www.dammonengineering.com
 info@dammonengineering.com
 PH: 985.649.9832

REVISIONS	DATE
#	DESCRIPTION

SEAL:
 Brian A. Mistich
 LICENSED PROFESSIONAL ENGINEER
 STATE OF MISSISSIPPI
 20971

NEW RESIDENTIAL
CRAIG BERGERON
 6410 HIKO COURT
 DIAMONDHEAD, MS 39525
 JOB No: _____ DATE: 08-26-2014
 DRAWN BY: _____ RLD/ CHECKED BY: _____ CND

SHEET TITLE:
POWER AND LIGHTING PLAN
 DRAWING NUMBER:
E101
 SHEET No: 10 of 10