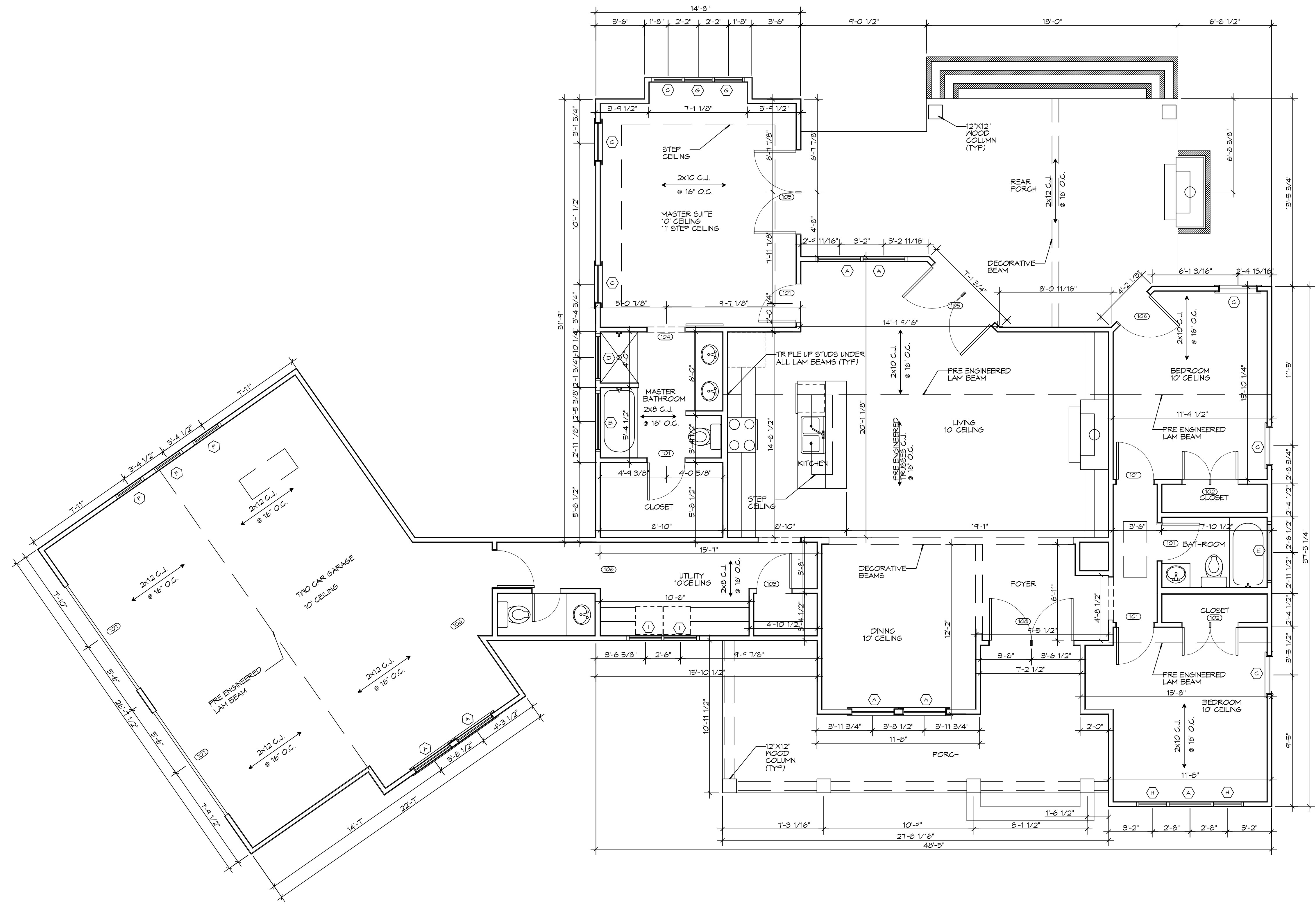


FILE NAME: J:\RESIDENTIAL\New Residential\Woods\Woods.dwg DATE: 08-26-2019 10:42:37

WINDOW SCHEDULE				
MK	SIZE	FRAME	TYPE	REMARKS
A	3'-0" x 6'-6"	FIBERGLASS	OPERABLE	DOUBLE HUNG
B	4'-0" x 5'-6"	FIBERGLASS	FIXED	PICTURE WINDOW
C	2'-8" x 5'-6"	FIBERGLASS	OPERABLE	DOUBLE HUNG
D	3'-0" x 1'-6"	FIBERGLASS	FIXED	TRANSOM WINDOW
E	4'-0" x 1'-6"	FIBERGLASS	FIXED	TRANSOM WINDOW
F	2'-0" x 2'-0"	FIBERGLASS	FIXED	PICTURE WINDOW
G	2'-0" x 5'-6"	FIBERGLASS	OPERABLE	DOUBLE HUNG
H	2'-0" x 6'-6"	FIBERGLASS	OPERABLE	DOUBLE HUNG
I	2'-4" x 4'-0"	FIBERGLASS	OPERABLE	DOUBLE HUNG

DOOR SCHEDULE							
MK	WIDTH	HEIGHT	THK	DOOR MAT	FRAME MAT	RATED	REMARKS
100	(2) 3'-0"	8'-0"	1-3/4"	INSUL MTL	MTL	NR	
101	2'-8"	8'-0"	1-3/4"	MASONITE	WOOD	NR	
102	(2) 2'-0"	8'-0"	1-3/4"	MASONITE	WOOD	NR	
103	2'-6"	8'-0"	1-3/4"	MASONITE	WOOD	NR	
104	2'-8"	8'-0"	1-3/4"	MASONITE	WOOD	NR	BARN DOOR
105	(2) 3'-0"	8'-0"	1-3/4"	INSUL MTL	MTL	NR	
106	3'-0"	8'-0"	1-3/4"	INSUL MTL	MTL	NR	
107	(2) 9'-0"	8'-0"	-	MTL	MTL	NR	GARAGE DOOR

FINISH SCHEDULE					
ROOM NAME	FLOOR	BASE	WALL	CEILING	REMARKS
FIRST FLOOR	LAMINATE WOOD	T BASEBOARD	5/8" GYP BD	5/8" GYP BD	TYPE 'X'
BATHROOMS	CERAMIC	CERAMIC	5/8" GYP BD	5/8" GYP BD	MOISTURE RESISTANT TYPE 'X'



**2 LEVEL 1**  
SCALE: 1/4"=1'-0"

**DAMMON ENGINEERING, INC.**  
 LOUISIANA & MISSISSIPPI  
 Chief Engineer: Brian Mitchell, PE  
 554 Old Spanish Trail  
 Slidell, LA 70668  
 www.dammonengineering.com  
 info@dammonengineering.com  
 PH: 985.649.9532

#	DESCRIPTION	DATE

Missing or  
File: P:\S  
Sheet: 1

**NEW RESIDENTIAL**  
**CRAIG BERGERON**  
 6410 HUNCO COURT  
 DIAMONDHEAD, MS 39425  
 JOB No: 2019 DATE: 08-26-2019  
 DRAWN BY: RLD CHECKED BY: CKD

SHEET TITLE:  
FLOOR PLANS  
LEVEL 1 & LEVEL 2

DRAWING NUMBER:  
**A101**

SHEET No: 4 of 10