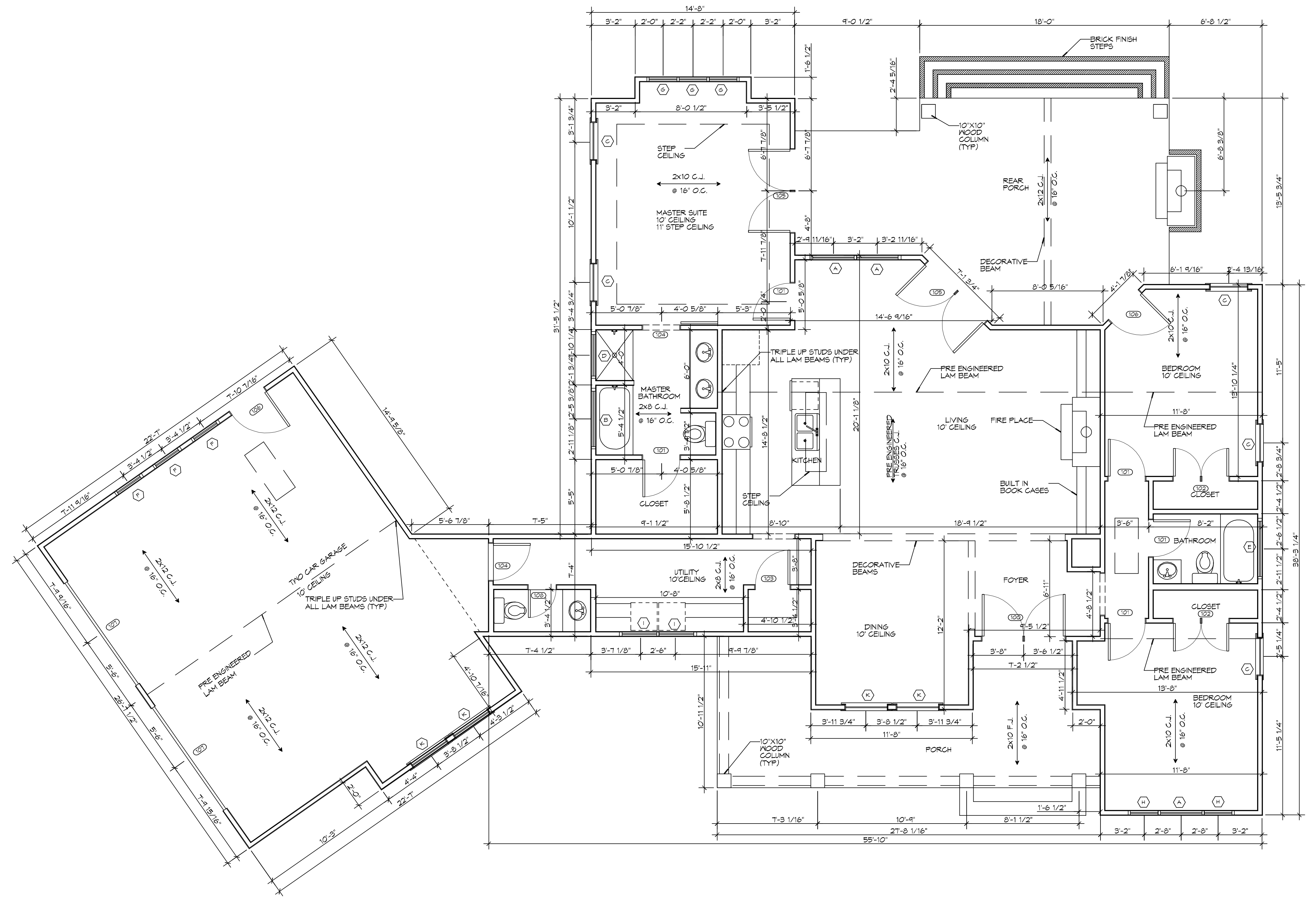


FILE NAME: J:\RESIDENTIAL\308 Dammon\308 Dammon.dwg DATE: 02-25-2021 11:07:30

WINDOW SCHEDULE				
MK	SIZE	FRAME	TYPE	REMARKS
A	3'-0" W x 6'-0" H	FIBERGLASS	OPERABLE	DOUBLE HUNG
B	4'-0" W x 5'-6" H	FIBERGLASS	FIXED	PICTURE WINDOW
C	2'-8" W x 5'-6" H	FIBERGLASS	OPERABLE	DOUBLE HUNG
D	3'-0" W x 1'-4" H	FIBERGLASS	FIXED	TRANSOM WINDOW
E	4'-0" W x 1'-4" H	FIBERGLASS	FIXED	TRANSOM WINDOW
F	2'-0" W x 2'-0" H	FIBERGLASS	FIXED	PICTURE WINDOW, *SEE ELEVATIONS
G	2'-0" W x 5'-6" H	FIBERGLASS	OPERABLE	DOUBLE HUNG
H	2'-0" W x 6'-0" H	FIBERGLASS	OPERABLE	DOUBLE HUNG
I	2'-6" W x 4'-0" H	FIBERGLASS	OPERABLE	DOUBLE HUNG
J	2'-0" W x 4'-0" H	FIBERGLASS	OPERABLE	DOUBLE HUNG, *SEE ELEVATIONS
K	3'-0" W x 5'-6" H	FIBERGLASS	OPERABLE	DOUBLE HUNG
L	2'-0" W x 3'-6" H	FIBERGLASS	OPERABLE	DOUBLE HUNG, *SEE ELEVATIONS

DOOR SCHEDULE						
MK	WIDTH	HEIGHT	THK	DOOR MAT	FRAME MAT	REMARKS
100	(2) 3'-0"	8'-0"	1-3/4"	INSUL MTL	MTL	
101	2'-8"	8'-0"	1-3/4"	MASONITE	WOOD	
102	(2) 2'-0"	8'-0"	1-3/4"	MASONITE	WOOD	
103	2'-6"	8'-0"	1-3/4"	MASONITE	WOOD	
104	2'-8"	8'-0"	1-3/4"	MASONITE	WOOD	BARN DOOR
105	(2) 3'-0"	8'-0"	1-3/4"	INSUL MTL	MTL	
106	3'-0"	8'-0"	1-3/4"	INSUL MTL	MTL	
107	(2) 9'-0"	8'-0"	-	MTL	MTL	GARAGE DOOR
108	2'-0"	8'-0"	1-3/4"	INSUL MTL	MTL	

FINISH SCHEDULE					
ROOM NAME	FLOOR	BASE	WALL	CEILING	REMARKS
FIRST FLOOR	LAMINATE WOOD	T BASEBOARD	1/2" GYP BD	1/2" GYP BD	
BATHROOMS	CERAMIC	CERAMIC	1/2" GYP BD	1/2" GYP BD	MOISTURE RESISTANT



**3 FLOOR PLAN**  
SCALE: 1/4"=1'-0"

**DAMMON ENGINEERING, INC.**  
 LOUISIANA & MISSISSIPPI  
 Chief Engineer: Brian M. Mitch, PE  
 554 Old Spanish Trail  
 Slidell, LA 70688  
 www.dammonengineering.com  
 info@dammonengineering.com  
 PH: 985.649.9832

#	DESCRIPTION	DATE

SEAL:

**NEW RESIDENTIAL**  
**CRAIG BERGERON**  
 6410 HUKO COURT  
 DIAMONDHEAD, MS 39425  
 JOB No: 2021 DATE: 02-25-2021  
 DRAWN BY: RLD CHECKED BY: CKD

SHEET TITLE:  
FLOOR PLAN

DRAWING NUMBER:  
**A101**