

1 FOUNDATION PLAN

SCALE: 1/4"=1'-0"

GENERAL FOUNDATION NOTES

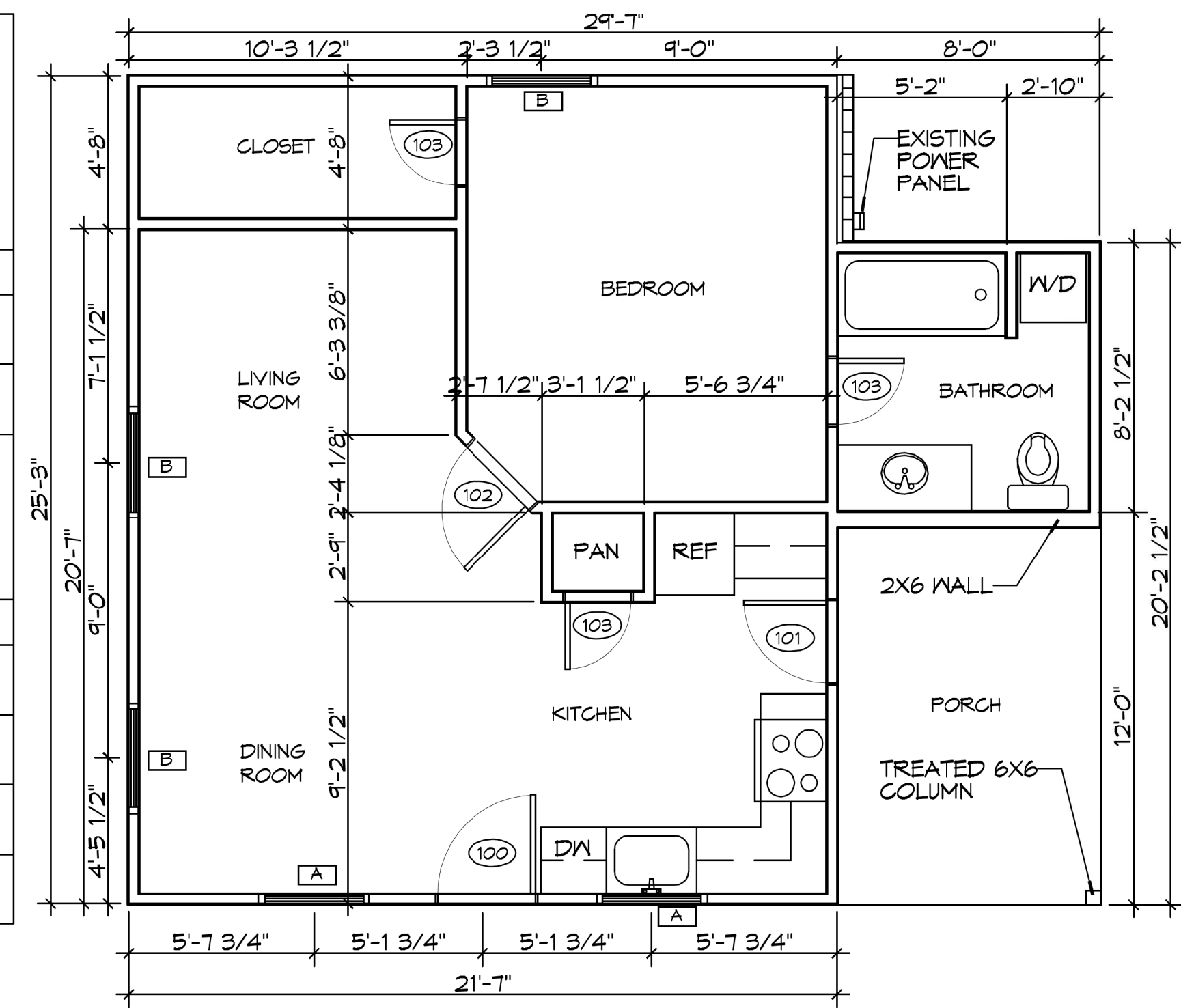
1. ALL DIMENSIONS ARE EDGE OF CONCRETE (EOC) TO EDGE OF CONCRETE (EOC) UNLESS NOTED OTHERWISE.
2. VERIFY ALL PLUMBING ROUGH-IN LOCATIONS ON ARCHITECTURAL DWGS.
3. CONCRETE MIX SHALL HAVE A MINIMUM COMPRESSIVE STRENGTH OF 4000 PSI AT 28 DAYS. CONCRETE MIX SHALL BE IN ACCORDANCE WITH ACI-318.
4. ALL CONVENTIONAL REINFORCING STEEL SHALL MEET ASTM-A615 (GRADE 60).
5. ONE LAYER OF POLYETHYLENE VAPOR BARRIER SHALL BE PLACED UNDER ALL CONCRETE. VAPOR RETARDER TO BE MINIMUM 10 MIL, THICKNESS; ASTM E 1745 CLASS A, PERMEANCE LESS THAN 0.01 PERMS, EQUAL TO STEGO INDUSTRIES STEGO WRAP, ECOSHIELD-E 15 MIL BY EPFO, OR IRONBAR 15 BY FLATIRON FILMS. PROVIDE APPROPRIATE ACCESSORIES FOR A COMPLETE SYSTEM.
6. ALL REINFORCING STEEL AND MESH SHALL BE SECURELY SUPPORTED TO PREVENT BOTH VERTICAL AND HORIZONTAL MOVEMENT DURING CONCRETE PLACEMENT.
7. THE CONTRACTOR SHALL VERIFY ALL DROPS, OFFSETS, BRICK LEDGES, DIMENSIONS AND CONFIGURATIONS. CONTRACTOR MUST BE RESPONSIBLE FOR SAME.
8. GRADE BEAM DIMENSIONS MAY VARY BY -5%, +20%.
9. NEW SPREAD CONCRETE FOOTINGS AND CONTINUOUS FOOTINGS, BEARING ON COMPACTED STRUCTURAL FILL AT LEAST 2 FEET BELOW FINISHED GRADE, SHOULD BE DESIGNED FOR MINIMUM NET ALLOWABLE BEARING PRESSURES OF 1200 PSF AND 2000 PSF, RESPECTIVELY, BASED ON DEAD LOADS AND DESIGN LIVE LOADS.
10. ALL SOIL BELOW SLAB SHALL RECEIVE TERMITE TREATMENT.

WINDOW SCHEDULE

MK	WIDTH	HEIGHT	TYPE
A	3'-0"	3'-0"	OPERABLE
B	3'-0"	6'-0"	OPERABLE

DOOR SCHEDULE

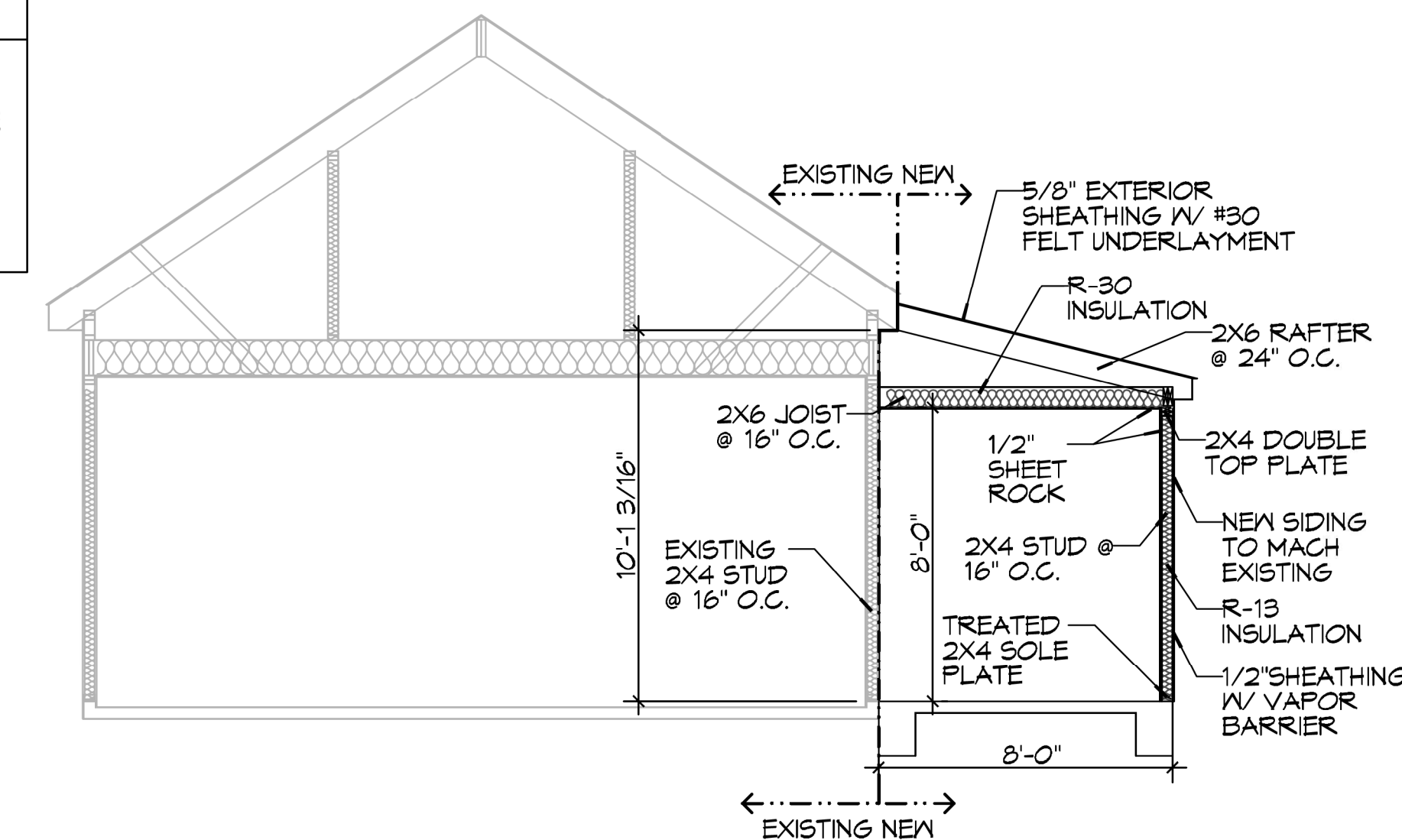
MK	WIDTH	HEIGHT	NOTES
100	3'-0"	6'-8"	EXTERIOR DOOR
101	2'-6"	6'-8"	EXTERIOR DOOR
102	2'-8"	6'-8"	INTERIOR DOOR
103	2'-0"	6'-8"	INTERIOR DOOR



2 FLOOR PLAN

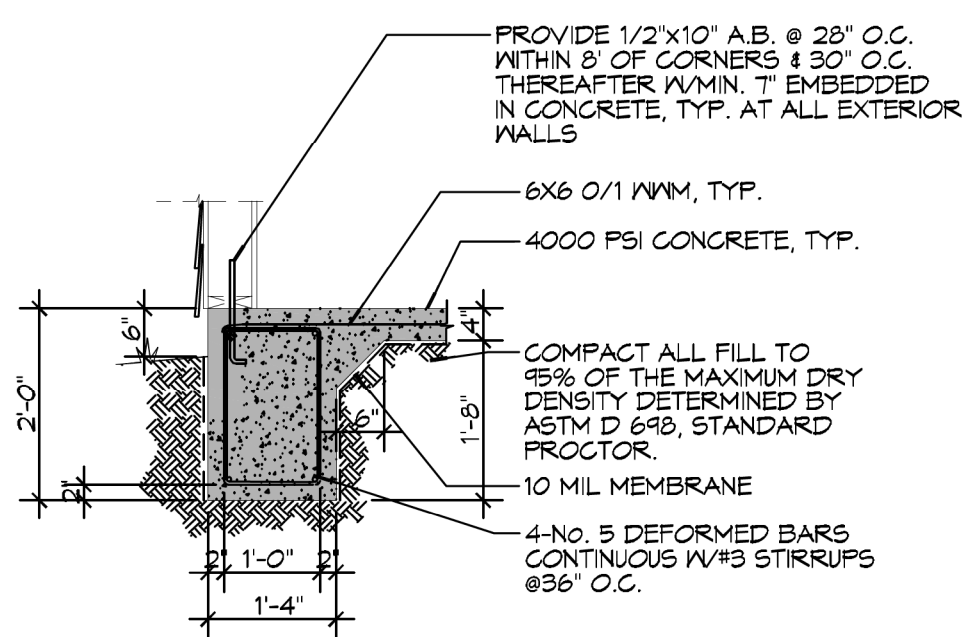
SCALE: 1/4"=1'-0"

WIND SPEED
 THE CONSTRUCTION FOR SAID RESIDENCE, WHERE VULT WIND SPEED IS 141 mph and VASD WIND SPEED IS 110 mph, WIND EXPOSURE ZONE C. THIS DESIGN IS IN ACCORDANCE WITH: AMERICAN WOOD COUNCIL, WOOD FRAME CONSTRUCTION MANUAL FOR ONE AND TWO FAMILY DWELLINGS (AWFCM) 2015 EDITION AS WELL AS THE INTERNATIONAL RESIDENTIAL CODE (IRC) 2015 EDITION.



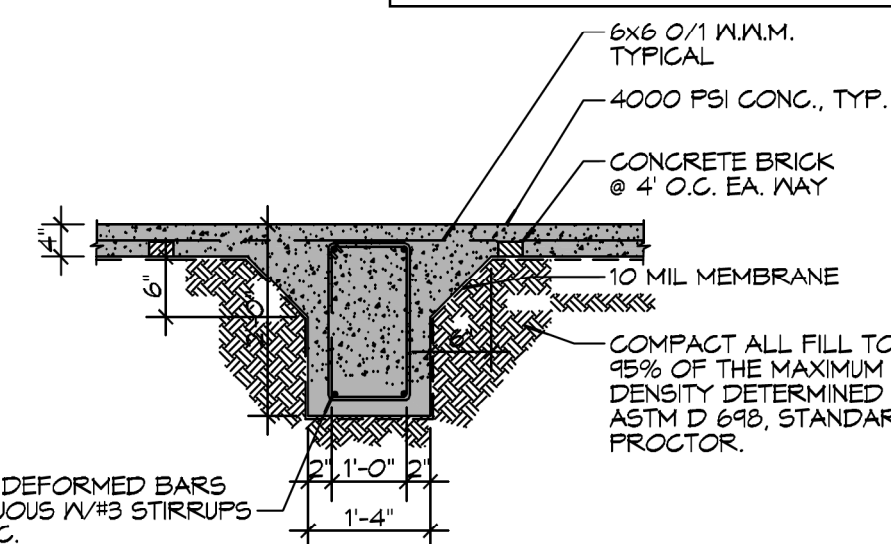
3 SECTION VIEW

SCALE: 1/4"=1'-0"



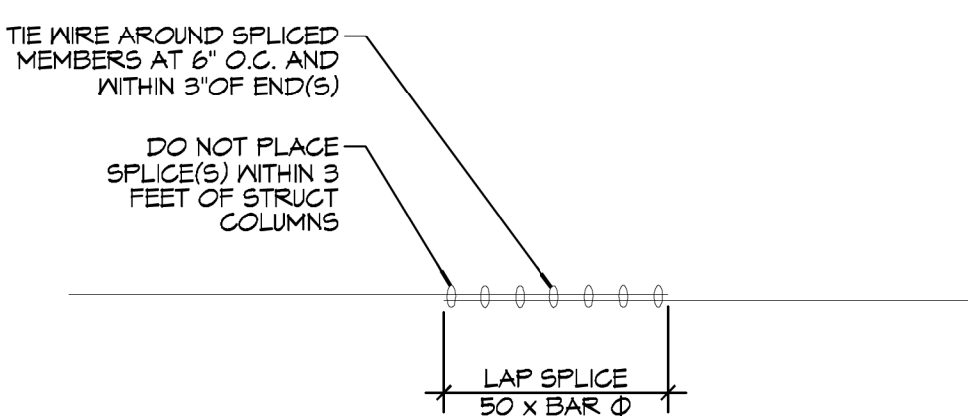
A FOUNDATION DETAIL

SCALE: 1/2" = 1' - 0"



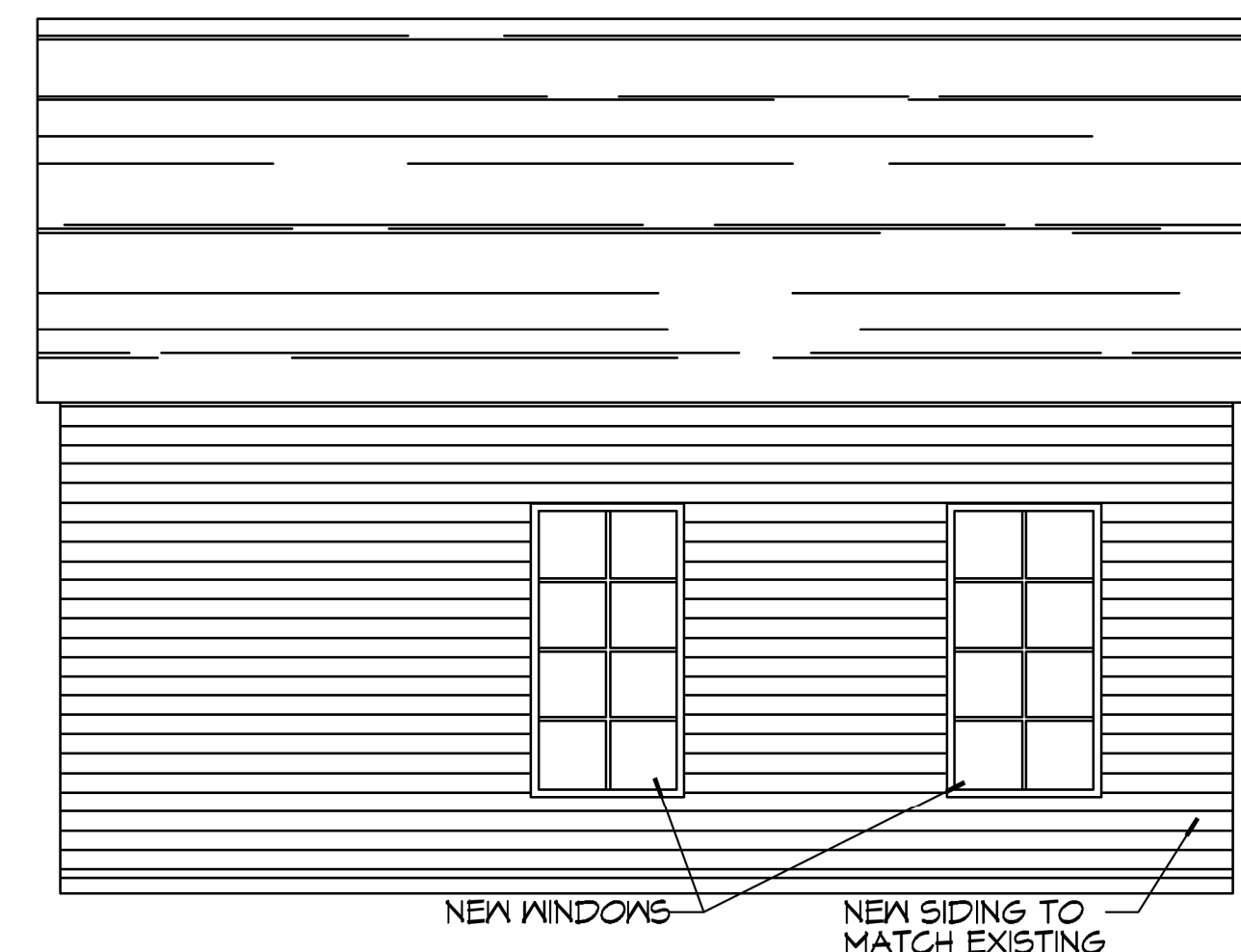
B FOUNDATION DETAIL

SCALE: 1/2" = 1' - 0"



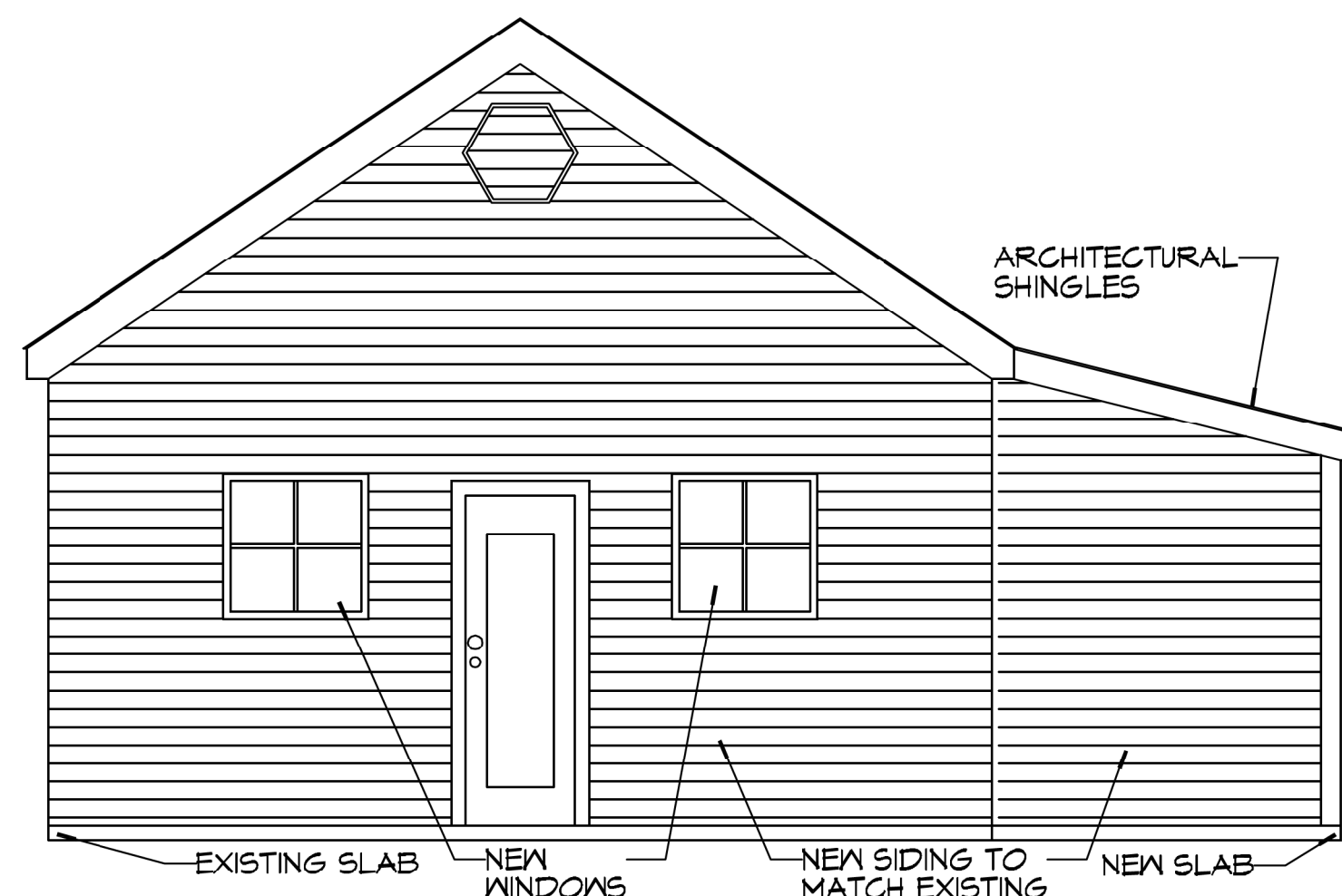
2 FOUNDATION DETAIL

SCALE: 1/2" = 1' - 0"



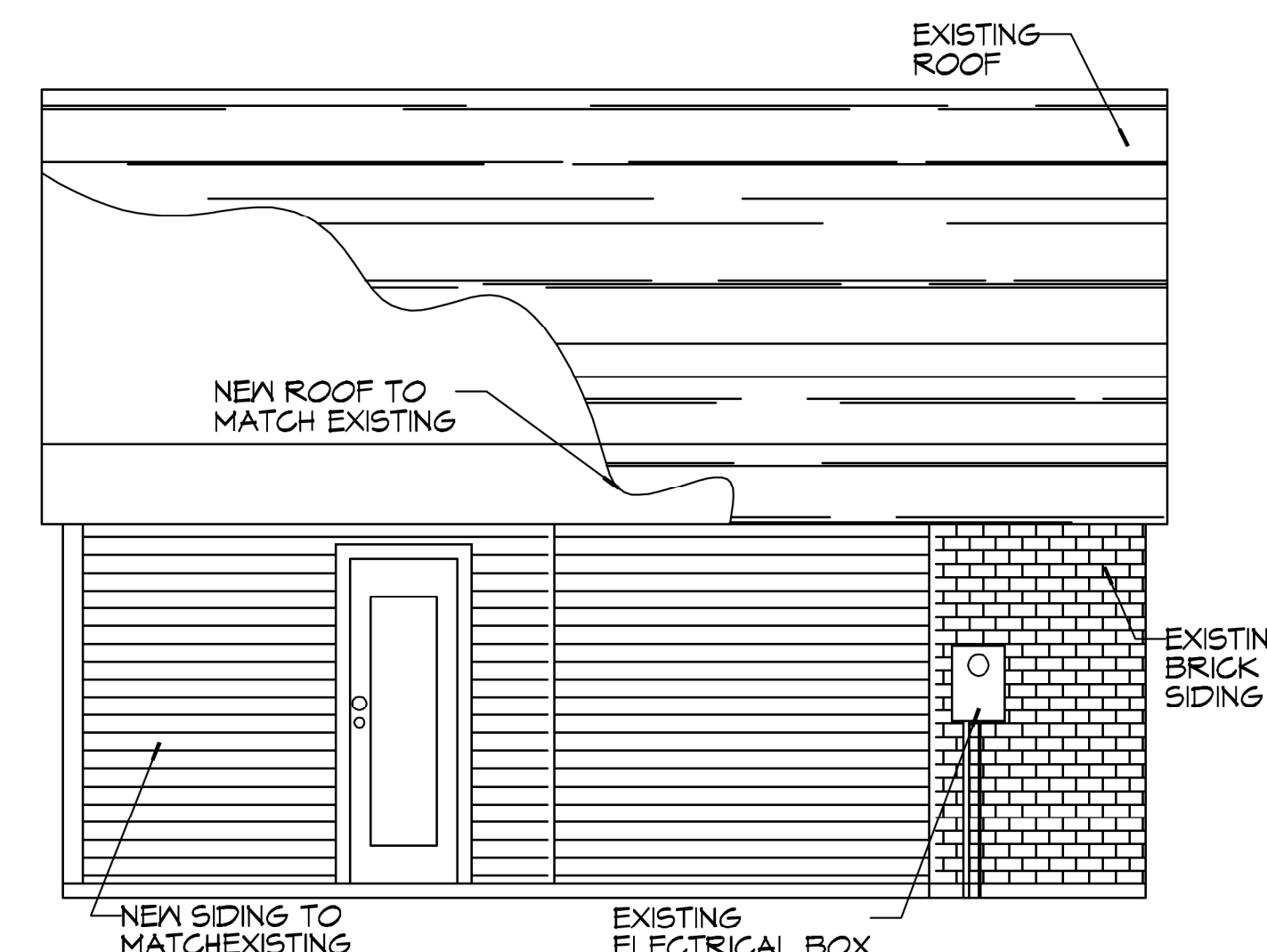
4 LEFT ELEVATION VIEW

SCALE: 1/4"=1'-0"



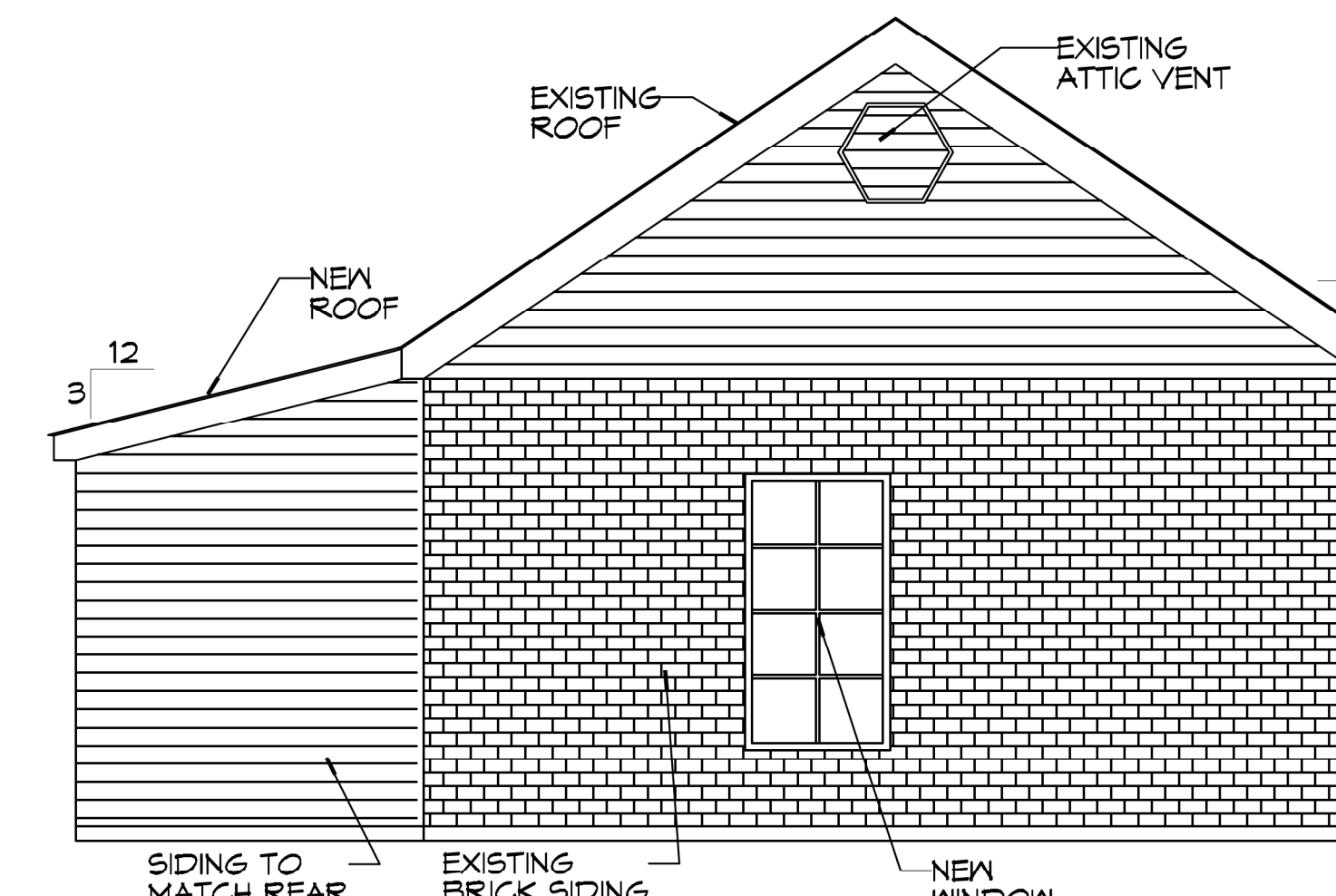
5 FRONT ELEVATION VIEW

SCALE: 1/4"=1'-0"



6 RIGHT ELEVATION VIEW

SCALE: 1/4"=1'-0"



7 REAR ELEVATION VIEW

SCALE: 1/4"=1'-0"

DAMMON ENGINEERING, INC.
 LOUISIANA & MISSISSIPPI
 Chief Engineer: Brian M. Misch, PE
 554 Old Spanish Trail
 Slidell, LA 70458
 www.dammonengineering.com
 info@dammonengineering.com
 PH: 985.649.5832

#	DESCRIPTION	DATE



ADDITION
D A Y S A N T
 98245 JOHN WESSBOR
 PEARL RIVER, LA
 JOB No: 05-19-2021
 DRAWN BY: TAYLOR
 CHECKED BY: CKD

SHEET TITLE:
FLOOR PLAN

DRAWING NUMBER:
A101
 SHEET No: 1 of 2