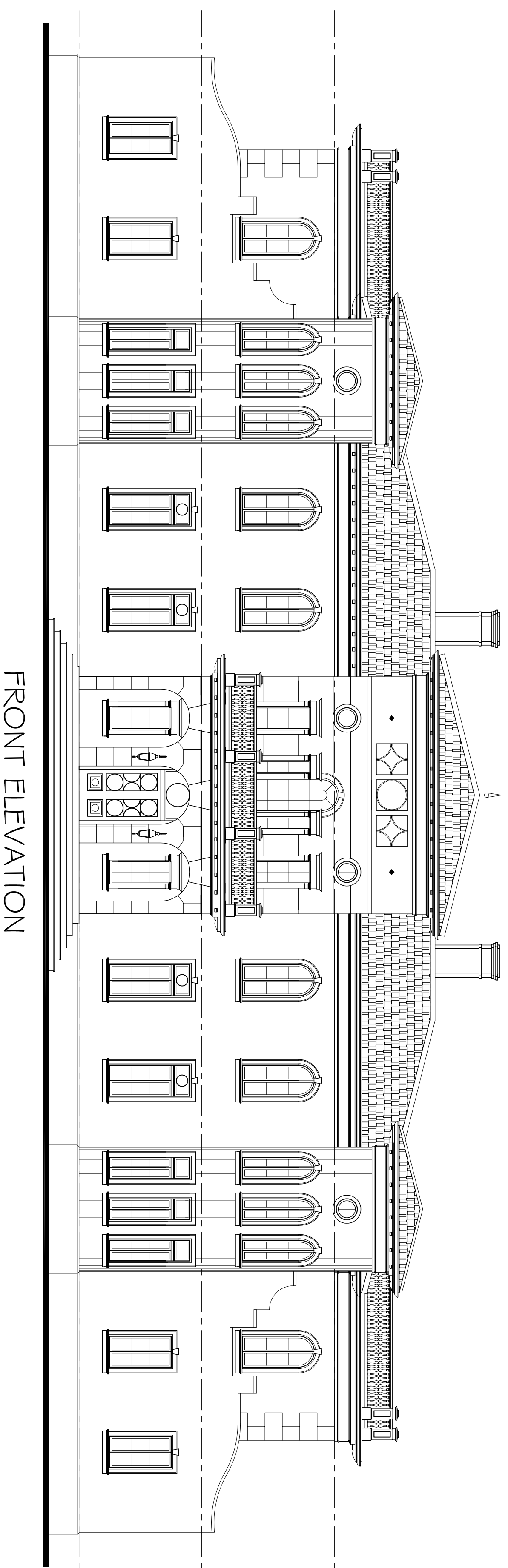


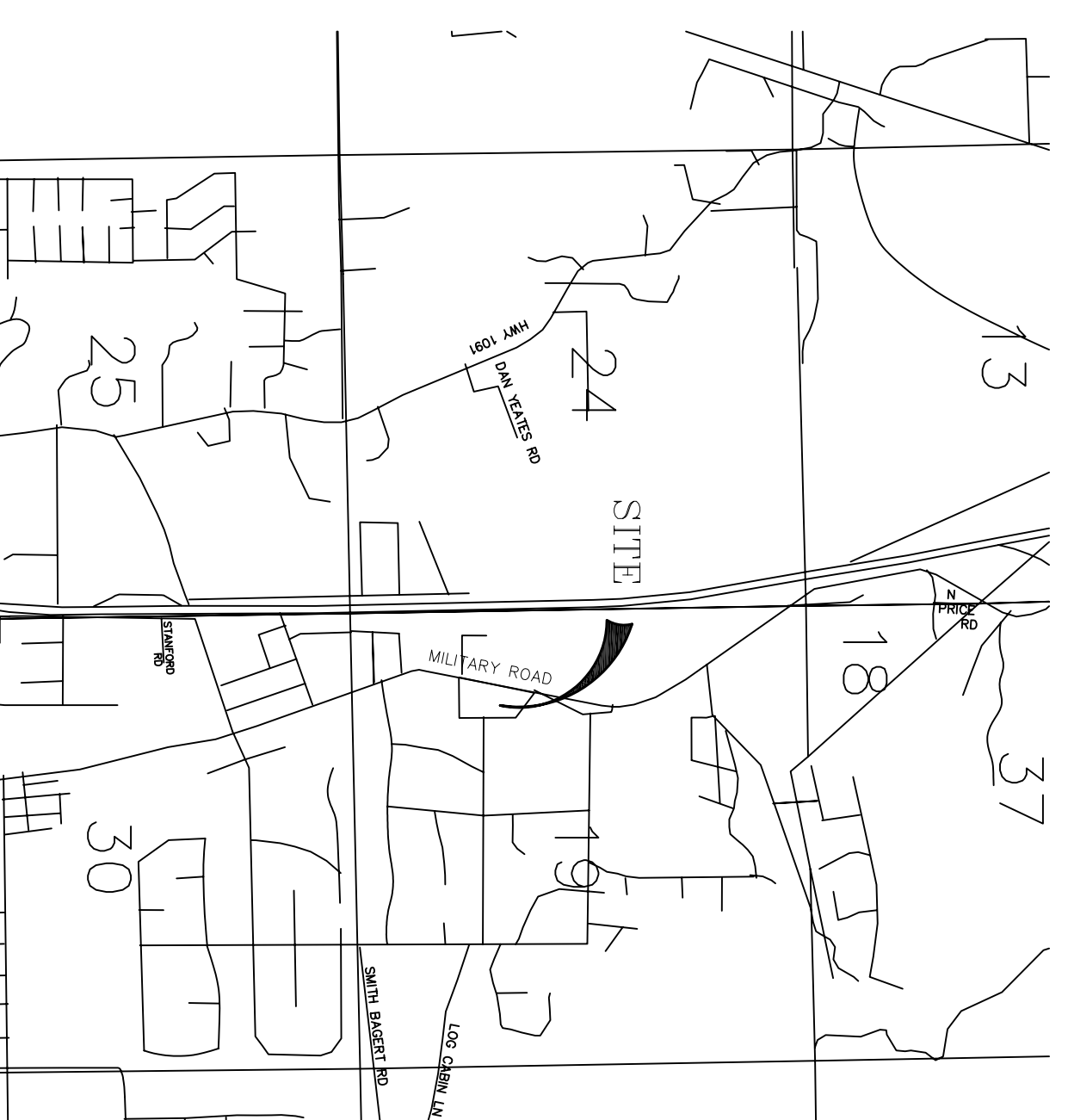
# THE LAWRENCE RESIDENCE

MILITARY ROAD  
SLIDELL, LA 70458



TOTAL GROUND FLOOR AREA: 10,063 SQ.FT.  
TOTAL SECOND FLOOR AREA: 9,931 SQ.FT.  
TOTAL SQUARE FEET: 19,994 SQ.FT.

| INDEX OF DRAWINGS |   |         |
|-------------------|---|---------|
| SHT#              | DWG#                                      | REVISID |
| 1                 | COVERSHEET                                |         |
| 2                 | C-1 SITE PLAN                             |         |
| 3                 | A-1 FIRST FLOOR PLAN                      |         |
| 4                 | A-2 SECOND FLOOR PLAN                     |         |
| 5                 | A-3 FRONT EXTERIOR ELEVATION              |         |
| 6                 | A-4 STRAPPING DETAILS                     |         |
| 7                 | A-5 ROOF PLAN                             |         |
| 8                 | M-1 FIRST & SECOND FLOOR MECHANICAL PLANS |         |
| 9                 | E-1 FIRST FLOOR POWER PLAN                |         |
| 10                | E-2 SECOND FLOOR POWER PLAN               |         |
| 11                | E-3 FIRST FLOOR LIGHTING PLAN             |         |
| 12                | E-4 SECOND FLOOR LIGHTING PLAN            |         |
| 13                | E-5 ATTIC POWER & LIGHTING PLAN           |         |
| 14                | P-1 FIRST FLOOR PLUMBING PLAN             |         |
| 15                | P-2 SECOND FLOOR PLUMBING PLAN            |         |
| 16                | P-3 PLUMBING RISERS, NOTES, & DETAILS     |         |



**DESIGN CRITERIA:**

THE CONSTRUCTION FOR SAID RESIDENCE, WHERE BASIC WIND SPEED IS 130 MILES PER HOUR, WIND EXPOSURE ZONE C, IS DESIGNED IN ACCORDANCE WITH: AMERICAN FOREST AND PAPER ASSOCIATION (AF&PA) WOOD FRAME CONSTRUCTION MANUAL FOR ONE AND TWO FAMILY DWELLINGS (WFCM) 2001 EDITION, AS WELL AS THE INTERNATIONAL RESIDENTIAL CODE (IRC) 2009 EDITION

In joint venture with:

**DAMMON**  
ENGINEERING, INC.

Architects & Engineers  
www.dammonengineering.com  
Chief Architect: Kevin J. Kitchin, NCA88  
Chief Engineer: Brian Witsch, PE  
554 Old Spanish Trail  
Slidell, LA 70458  
PH: 985.649.5832  
F: 985.641.5950

PERMIT SET  
NOT FOR CONSTRUCTION

The Lawrence Residence  
Military Road  
Slidell, LA

Sheet #: 1 of 16

|                       |             |
|-----------------------|-------------|
| Project #: 05-08-2014 | Revision: - |
| Date: 05-08-2014      | Revision: - |
| Scale: 3/32" = 1'-0"  | Revision: - |
| Drawn By: JIL         | Revision: - |
| Checked By: CKD       | Revision: - |
| Revision: -           | Revision: - |
| Revision: -           | Revision: - |

Cover

MELANCON ORTEGA DESIGNS  
architectural + interiors  
NEW ORLEANS, LA  
504.483.7727 • 504.483.7729 • F

PERMIT SET

PRELIMINARY (NOT FOR CONSTRUCTION)