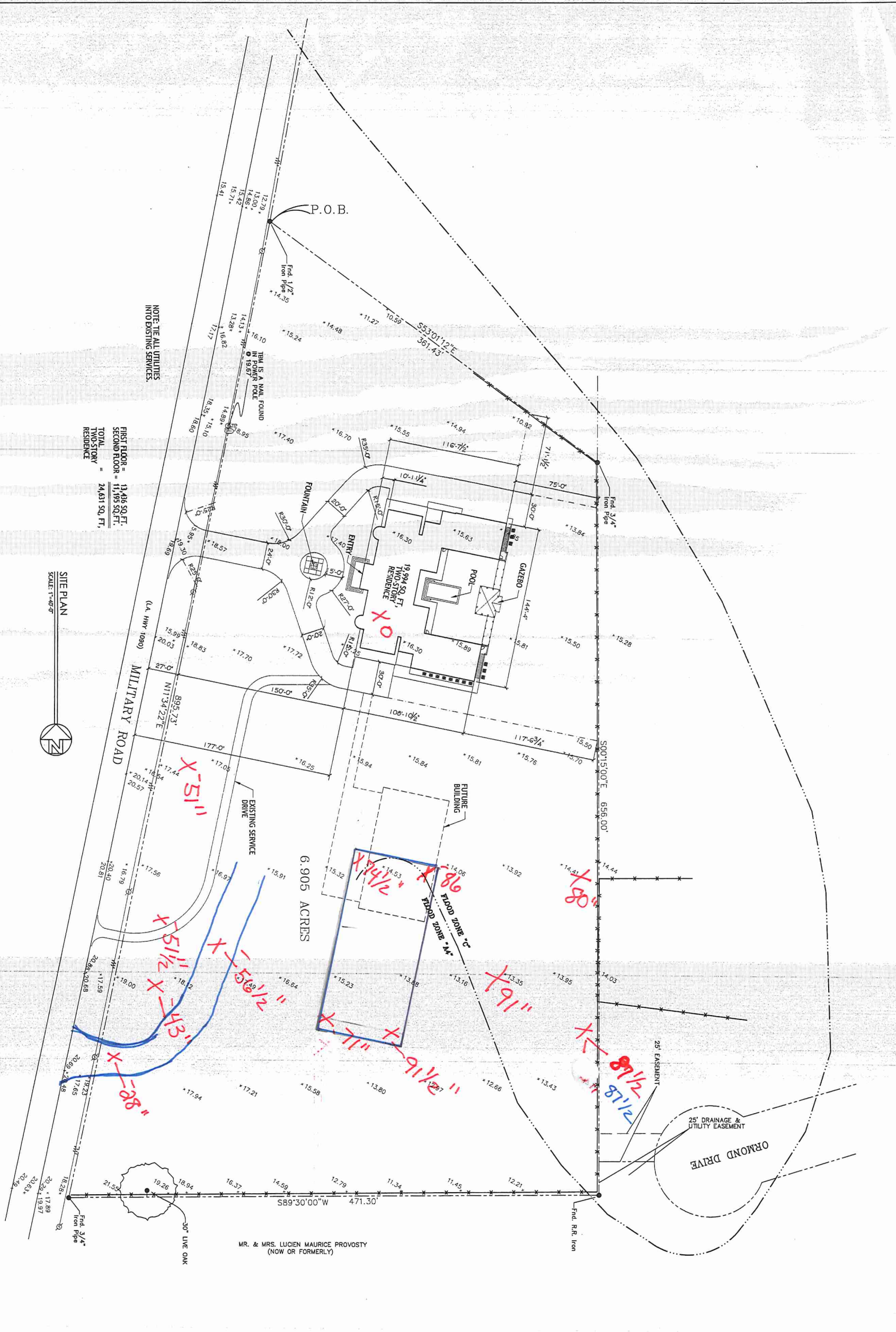


PERMIT SET



NOTE: THE ALL UTILITIES INTO EXISTING SERVICES.

FIRST FLOOR = 11,448 SQ. FT.  
SECOND FLOOR = 11,993 SQ. FT.  
TOTAL TWO-STORY RESIDENCE = 24,431 SQ. FT.



In Joint Venture with:

**DAMMON**  
ENGINEERING, INC.  
Architects & Engineers

Chief Architect: Kenji A. Kikuchi, NCEAB  
Chief Engineer: Brian Mutchler, PE  
554 Old Spanish Trail  
Slidell, LA 70368

www.dammonengineering.com  
dammoneng@att.net  
PH: 985.649.8832  
F: 985.641.9590

Project #: 2208		Revision: -
Date: 05-27-2014		Revision: -
Scale: 3/32" = 1'-0"		Revision: -
Drawn By: JIL		Revision: -
Checked By: CAD		Revision: -
Revision: -		Revision: -



The Lawrence Residence  
Military Road  
Slidell, LA

PERMIT SET