

DAMMON
ENGINEERING, INC

CHIEF ENGINEER
EMMETT
DAMMON, P.E.

CHIEF ARCHITECT
ROBERT
WILTSE

1095 FLORIDA AVENUE
SUDELL, LA. 70458
OFFICE: 985-649-5632
FAX: 985-641-5950

WEBSITE:
WWW.DAMMONENGINEERING.COM
EMAIL:
DAMMONENG@BLSOUTH.NET

ARCHITECTURE
ENGINEERING
STUDIES
PLANNING
INVESTIGATION
EXPERT WITNESS

ADDITION TO
LOUIS NEFF
LOG HOME AT 21
LOG CABIN LANE
SUDELL, LA

SITE
PLAN

REV:

SCALE: AS NOTED

JOB#: 2079

DATE: 10-11-10

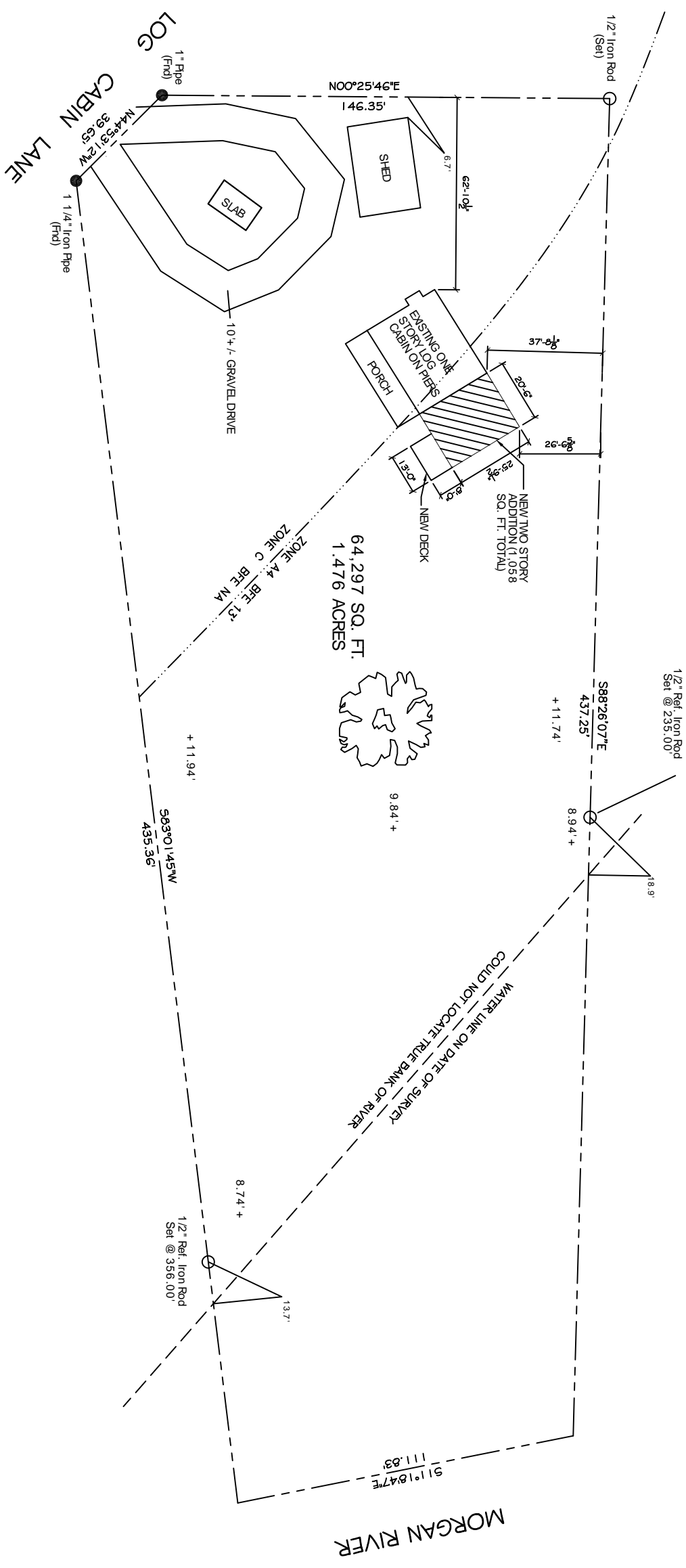
SHEET 2

C-1

OF 12

SITE LEGEND

- PROPERTY LINE
- - - - - UTILITY / EASEMENT LINE
- BUILDING SETBACK MINIMUM
- BUILDING OUTLINE



SITE PLAN
SCALE: 1" = 20'

