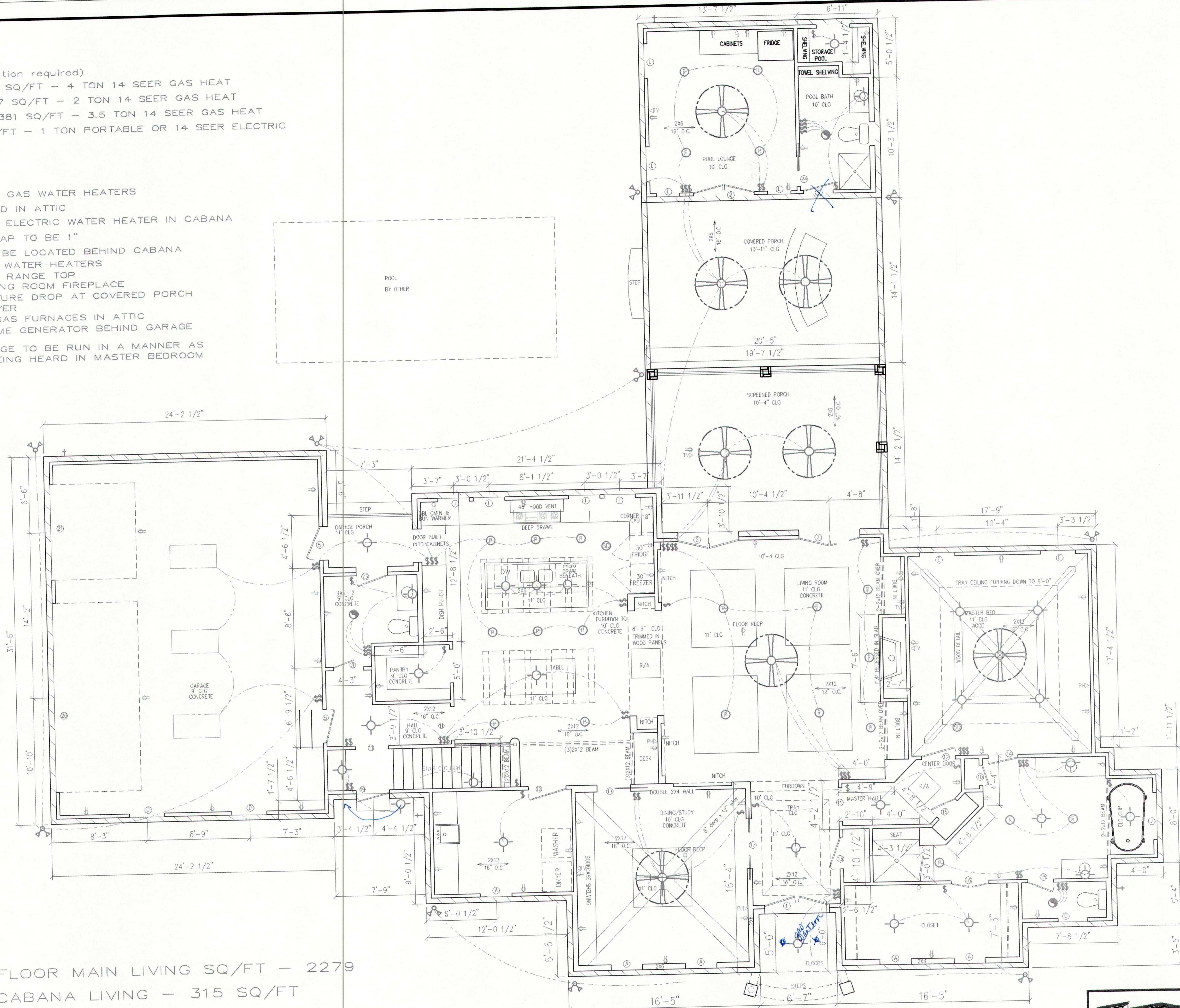


A/C SYSTEMS (Verification required)
 MAIN LIVING - 1451 SQ/FT - 4 TON 14 SEER GAS HEAT
 MASTER WING - 657 SQ/FT - 2 TON 14 SEER GAS HEAT
 SECOND FLOOR - 1381 SQ/FT - 3.5 TON 14 SEER GAS HEAT
 CABANA - 282 SQ/FT - 1 TON PORTABLE OR 14 SEER ELECTRIC

- PLUMBING:
- 2 - 55 GALLON GAS WATER HEATERS TO BE INSTALLED IN ATTIC
 - 1 - 30 GALLON ELECTRIC WATER HEATER IN CABANA
 - WATER METER TAP TO BE 1"
 - POOL PUMP TO BE LOCATED BEHIND CABANA
 - Gas Drops: (2) WATER HEATERS
48" RANGE TOP
LIVING ROOM FIREPLACE
FUTURE DROP AT COVERED PORCH
DRYER
3 GAS FURNACES IN ATTIC
HOME GENERATOR BEHIND GARAGE
 - BATH 3 DRAINAGE TO BE RUN IN A MANNER AS TO PREVENT BEING HEARD IN MASTER BEDROOM



FIRST FLOOR MAIN LIVING SQ/FT - 2279
 POOL CABANA LIVING - 315 SQ/FT
 SECOND FLOOR LIVING SQ/FT - 1381
 GARAGE & PORCH'S SQ/FT - 1375
 TOTAL SQ/FT UNDER BEAM - 5350

FIRST FLOOR PLAN

1/4" = 1'

WINDOW SCHEDULE			
MK	SIZE	HEADER	DESCRIPTION
A	2880	9'-4"	VINYL EYEBROW
B	2880	9'-4"	VINYL EYEBROW TEMPERED
C	2640	8'-0"	VINYL
D	3260	7'-8"	VINYL
E	3080	7'-8"	VINYL
F			
G	3050	7'-0"	VINYL
H	3050	6'-10"	VINYL ARCH TOP
I	3850	8'-8"	VINYL
J	4040	7'-0"	VINYL TEMPERED
K	2840	8'-0"	VINYL
L	3070	8'-0"	VINYL
M	2850	7'-10" FROM STAR PLATFORM	VINYL EYEBROW TEMPERED

DOOR SCHEDULE			
MK	SIZE	JAMB	DESCRIPTION
1	5'-0"x8'-0"	4 9/16"	EXTERIOR WOOD DOUBLE DOOR FULL GLASS ARCH TOP
2	5'-0"x8'-0"	4 9/16"	EXTERIOR FIBERGLASS DOUBLE DOOR FULL GLASS
3	2'-8"x8'-8"	4 9/16"	EXTERIOR FIBERGLASS W/7'-0" TRANSOM FULL GLASS
4	2'-8"x8'-8"	4 9/16"	EXTERIOR SOLID FIBERGLASS DOOR
5	2'-8"x8'-8"	4 9/16"	EXTERIOR FIBERGLASS HALF GLASS
6	2'-8"x8'-8"	4 9/16"	INTERIOR DOOR
7	2'-8"x8'-8"	4 9/16"	INTERIOR DOOR
8	2'-8"x8'-8"	4 9/16"	INTERIOR DOOR
9	2'-0"x8'-8"	4 9/16"	INTERIOR DOOR
10	1'-8"x8'-8"	4 9/16"	INTERIOR DOOR
11	2'-8"x8'-0"	4 9/16"	CASED OPENING
12	2'-8"x8'-0"	4 9/16"	INTERIOR DOOR
13	2'-8"x8'-0"	4 9/16"	INTERIOR DOOR
14	2'-8"x8'-0"	4 9/16"	INTERIOR DOOR
15	2'-0"x8'-0"	4 9/16"	INTERIOR DOOR
16	3'-0"x8'-8"	4 9/16"	INTERIOR DOUBLE DOOR WITH BALL HINGE
17	4'-0"x8'-8"	6 9/16"	INTERIOR DOUBLE POCKET DOOR
18	4'-0"x8'-0"	6 9/16"	INTERIOR DOUBLE DOOR W/ BALL HINGE FULL GLASS
19	2'-8"x8'-0"	4 9/16"	EXTERIOR WOOD HALF GLASS
20	16'x8'	4 9/16"	GARAGE DOOR
21	8'x8'	4 9/16"	GARAGE DOOR
22	4'-0"x8'-8"	4 9/16"	BI-FOLD INTERIOR DOOR
23	2'-8"x8'-8"	4 9/16"	EXTERIOR FIBERGLASS HALF GLASS
24	2'-4"x8'-8"	4 9/16"	INTERIOR POCKET DOOR



RESIDENCE FOR:
PATRICIA & RAY POSECAI

SCALE: NOTED APPROVED BY:
 DATE: JULY 15, 2011 S.E.L.

TURTLE CREEK
 SLIDELL LA

CONTACT NUMBER:
 985-445-7128

DRAWN BY:
 SCOTT LASSERE

SHEET
 2 OF 5

www.lassereconstruction.com