



D & C Investments
Slidell, LA

Prepared for:
Chuck Dammon
Dammon Engineering

Prepared by:
Chip Beshenich
Specification
Lightolier Gulfcoast
1520 Kuebel St.
Harahan, LA 70123
504-473-1913
Fax: 504-733-8303

Design Phase



Project Summary

Project Summary

	<u>Interior</u>	<u>Exterior</u>	<u>Project</u>
Total Area:	0.00 sq. ft.	111844.90 sq. ft.	111844.90 sq. ft.
Connected Load:	0.00 W	2750.00 W	2750.00 W
Unit Power Density:	0.00 W/sq. ft.	0.025 W/sq. ft.	0.025 W/sq. ft.
Total Budget:	\$0.00	\$0.00	\$0.00

Interior Analysis




	<u>Actual Ill.*</u>	<u>Target Ill.*</u>	<u>Actual</u>	<u>Target</u>	<u>Total</u>	<u>% Int. Load</u>	<u>Total</u>	<u>% Int. Cost</u>
*Illuminance units: fc								
Zonal cavity illuminance does not take into account								
objects within the space, or daylighting.								
**Unit Power Density units: W/sq. ft.								

Luminaire Analysis

<u>Type</u>	<u>Quantity</u>	<u>Load (W)</u>	<u>Total Load(W)</u>	<u>% of Prj. Load</u>	<u>Cost (\$)</u>	<u>Total Cost(\$)</u>	<u>% of Prj. Cost</u>
P1	4	400.0	1600.0	58.18%	\$0.00	\$0.00	0.00%
P2	1	800.0	800.0	29.09%	\$0.00	\$0.00	0.00%
S1	0	400.0	0.0	0.00%	\$0.00	\$0.00	0.00%
S1.1	0	400.0	0.0	0.00%	\$0.00	\$0.00	0.00%
W2	2	175.0	350.0	12.73%	\$0.00	\$0.00	0.00%



Luminaire Schedule

Type	Symbol	Brand Name	Catalog Number	Description	Lamp	Number Lamps	Lamp
P1		Lytepoles	901-5018-25-BLK-D1	1(S1.1) on a 25. foot pole with a 2.5 foot pedestal		N/A	
P2		Lytepoles	901-5018-25-BLK-D2-180	1(S1) and 1(S1.1) on a 25. foot pole with a 2.5 foot pedestal		N/A	
S1		Hadco	PA3-C-S-A-4-400H-VOLT		400 Watt Metal Halide	1	400
S1.1		Hadco	PA3-C-S-A-4-400H-VOLT-H	House Side Shield	400 Watt Metal Halide	1	400
W2		Hadco	GS1D173MAL	CAST ALUMINUM HOUSING FORMED SEGMENTED SPECULAR REFLECTOR	175 Watt Metal Halide	1	175



Room / Site Summary

Site

Calculation Summary

	<u>Attained</u>	<u>Target</u>
Zonal Cavity Illum*:	N/A fc	N/A fc
Unit Power Density:	0.025 W/sq. ft.	N/A W/sq. ft.

*Zonal cavity illuminance does not take into account objects within the space, or daylighting.

Area Summary

Overall Size: 406.289 ft x 275.285 ft x N/A ft
 Reflectances: Ceiling: N/A
 Walls: N/A
 Floor: N/A

Total Cost: \$0.00

Luminaire Type Summary

<u>Type</u>	<u>Catalog Number</u>	<u>Quantity</u>
P1	Lytepoles 901-5018-25-BLK-D1	4
P2	Lytepoles 901-5018-25-BLK-D2-180	1
W2	Hadco "Wall Mounted" GS1D173MAL	2

Luminaire Location Summary

<u>Type</u>	<u>X</u>	<u>Y</u>	<u>Z</u>	<u>Orient</u>	<u>Tilt</u>	<u>Spin</u>	<u>AimX</u>	<u>AimY</u>	<u>AimZ</u>	<u>LLF</u>	<u>Tilt Factor</u>
P1	99.70	-76.30	0.00	360.00	0.00	0.00	n/a	n/a	n/a		
P1	99.74	-229.30	0.00	180.00	0.00	0.00	n/a	n/a	n/a		
P1	-81.46	-121.83	0.00	-90.00	0.00	0.00	n/a	n/a	n/a		
P1	-81.20	-184.87	0.00	-90.00	0.00	0.00	n/a	n/a	n/a		
P2	122.84	-152.86	0.00	0.00	n/a	n/a	n/a	n/a	n/a		
W2	-11.738	-	12.00	-180.00	0.00	0.00	n/a	n/a	n/a	0.8	1.0
W2	28.262	-	12.00	-180.00	0.00	0.00	n/a	n/a	n/a	0.8	1.0



Calculation Grid: Arbitrary Grid (Site)

Horizontal Illuminance

Calculation Grid Summary

Grid Name: Arbitrary Grid	Grid Origin: (-106.96, -247.11)	Grid Surface: n/a
Grid Type: Horizontal Illuminance	Grid Orient:	Grid Hinge: 0
Grid Units: Footcandles	Grid Elev.: 2.50	Grid Azimuth: 0

Statistical Area Summary

<u>Stat. Area</u>	<u>Ave</u>	<u>Max</u>	<u>Min</u>	<u>Ave/Min</u>	<u>Max/Min</u>	<u>Std. Dev.</u>
Arbitrary Grid	1.84	8.07	0.00	Undefined	Undefined	1.67

Calculation Grid

	0.00	10.25	20.49	30.74	40.98	51.23	61.48	71.72	81.97	92.21	102.46	112.71	122.95	133.20	143.44
185.81	0.03	0.05	0.24	0.47	0.60	0.63	0.58	0.49	0.33	0.20	0.00	0.01	0.01	0.03	0.08
175.48	0.05	0.08	0.33	0.88	1.15	1.10	1.00	0.73	0.45	0.00	0.01	0.01	0.02	0.06	0.20
165.16	0.08	0.12	0.40	1.47	1.73	1.85	1.58	1.06							
154.84	0.14	0.23	0.35	1.63	2.88	2.46	1.76	1.29							
144.52	0.19	0.35	0.51	1.32	3.90	3.34	1.89	1.63							
134.19	0.13	0.38	0.84	1.17	2.67	2.43	1.39	1.79							
123.87	0.15	0.47	1.14	1.64	3.55	2.93	1.74	2.01							
113.55	0.16	0.43	0.99	1.82	4.17	3.48	2.14	2.22							
103.23	0.25	0.41	0.81	2.71	5.18	4.99	3.43	2.49							
92.90	0.25	0.39	0.66	3.48	5.07	4.42	3.33	2.36							
82.58	0.24	0.42	0.86	2.44	5.11	4.94	3.26	2.48							
72.26	0.15	0.41	1.03	1.74	3.48	3.26	2.01	2.16							
61.94	0.15	0.46	1.13	1.59	3.53	2.90	1.70	1.97							
51.61	0.13	0.38	0.76	1.08	2.77	2.60	1.38	1.75							
41.29	0.18	0.32	0.47	1.25	3.58	3.43	1.99	1.61							
30.97	0.13	0.20	0.33	1.77	2.61	2.30	1.84	2.33	6.17	8.07	7.29	4.39	6.12	7.32	7.57
20.65	0.07	0.11	0.38	1.32	1.62	1.74	1.64	1.72	1.32	0.60	0.65	1.95	1.07	0.41	0.72



Horizontal Illuminance

Calculation Grid

	153.69	163.94	174.18	184.43	194.68	204.92	215.17	225.41	235.66	245.91	256.15	266.40	276.64	286.89
185.81	0.11	0.16	0.26	0.38	0.46	0.51	0.43	0.40	0.29	0.20	0.16	0.13	0.11	0.08
175.48	0.38	0.51	0.48	0.57	0.82	1.08	0.93	0.64	0.48	0.57	0.51	0.40	0.24	0.14
165.16	0.87	1.40	2.00	1.69	1.33	1.55	1.39	1.75	1.99	1.90	1.25	0.80	0.49	0.27
154.84	1.12	1.71	2.70	4.04	3.76	3.52	3.06	4.71	3.77	2.57	1.94	1.28	0.79	0.45
144.52	1.11	1.90	2.50	3.72	3.14	3.11	3.10	4.32	3.92	3.46	2.52	1.77	1.05	0.61
134.19	1.07	1.76	2.21	2.69	2.37	2.59	2.78	3.66	4.19	3.99	3.35	2.41	1.41	0.78
123.87	0.91	1.44	1.92	2.57	2.92	3.81	4.32	4.16	4.62	5.11	3.86	2.58	1.69	1.00
113.55	0.76	1.16	1.78	2.22	2.35	3.84	4.89	4.88	5.29	6.50	4.67	2.60	1.92	1.06
103.23	0.76	1.18	1.79	1.86	2.04	3.27	5.10	6.40	6.33	5.66	3.70	1.94	1.96	1.10
92.90	0.74	1.19	1.87	1.83	2.01	3.19	5.42	7.32	7.18	6.48	3.88	1.98	1.99	1.13
82.58	0.75	1.15	1.75	1.88	2.07	3.43	5.51	6.04	5.94	6.24	3.90	2.02	1.94	1.07
72.26	0.80	1.22	1.83	2.38	2.56	3.98	4.67	4.53	5.04	6.17	4.70	2.75	1.89	1.10
61.94	0.95	1.53	2.00	2.60	2.82	3.38	3.87	4.18	4.67	4.70	3.59	2.54	1.60	0.94
51.61	1.10	1.87	2.24	2.78	2.40	2.55	2.72	3.55	3.98	3.84	3.17	2.25	1.32	0.73
41.29	1.11	1.81	2.61	4.08	3.50	3.36	3.29	4.78	4.01	3.15	2.33	1.63	0.98	0.57
30.97	3.63	2.00	2.51	3.39	3.18	3.13	2.68	4.21	3.33	2.43	1.79	1.15	0.73	0.40
20.65	1.86	1.54	1.61	1.07	1.05	1.28	1.14	1.07	1.46	1.56	1.09	0.68	0.40	0.22



Calculation Grid: Arbitrary Grid (Site) (Page 3)

Horizontal Illuminance

Calculation Grid

	0.00	10.25	20.49	30.74	40.98	51.23	61.48	71.72	81.97	92.21	102.46	112.71	122.95	133.20	143.44
10.32	0.04	0.07	0.31	0.80	1.07	1.01	0.94	0.76	0.50	0.29	0.19	0.22	0.15	0.11	0.23
0.00	0.03	0.05	0.21	0.40	0.53	0.57	0.53	0.47	0.32	0.21	0.12	0.07	0.06	0.05	0.08



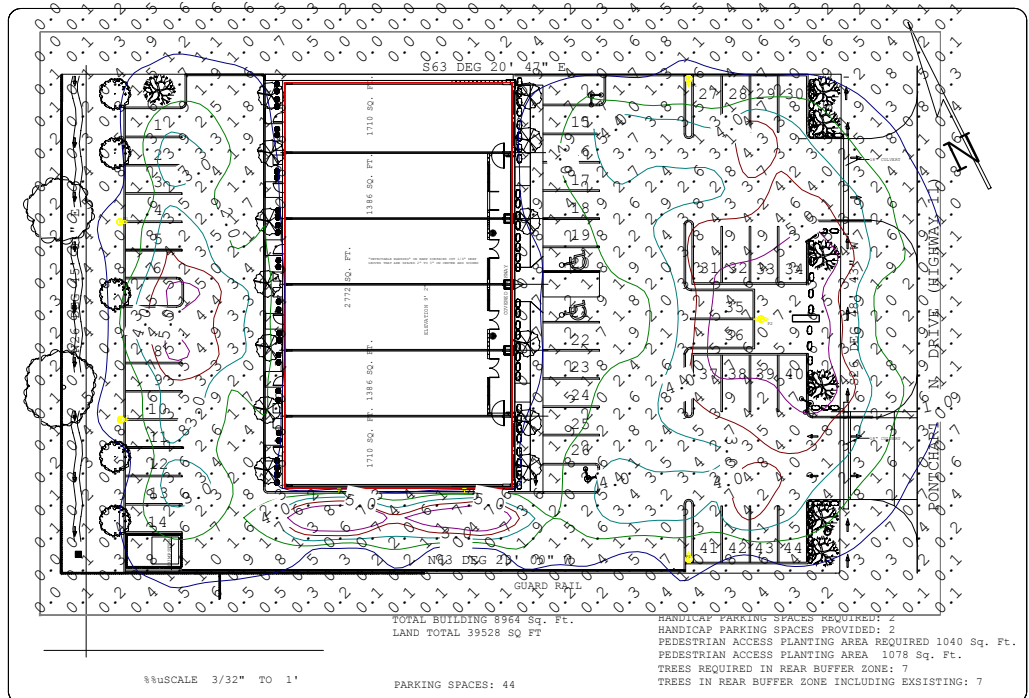
Calculation Grid: Arbitrary Grid (Site) (Page 4)

Horizontal Illuminance


Calculation Grid

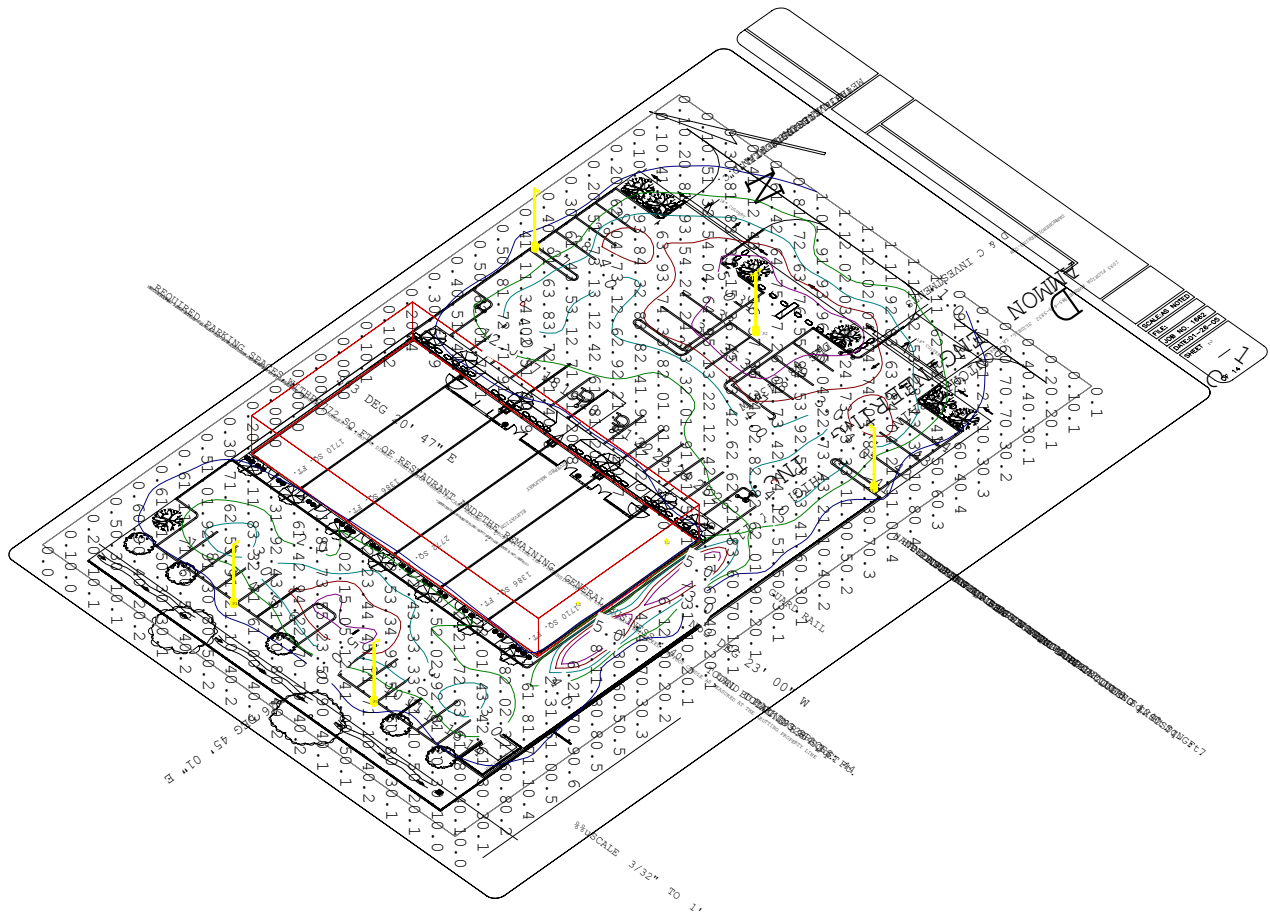
	153.69	163.94	174.18	184.43	194.68	204.92	215.17	225.41	235.66	245.91	256.15	266.40	276.64	286.89
10.32	0.34	0.35	0.37	0.52	0.73	1.00	0.81	0.57	0.41	0.34	0.34	0.30	0.20	0.12
0.00	0.10	0.16	0.23	0.35	0.37	0.36	0.33	0.36	0.25	0.17	0.13	0.11	0.09	0.07

REQUIRED PARKING SPACES, WITH 2172 SQ. FT. OF RESTAURANT AND 916 REMAINING, GENERAL BUSINESS: 40



Site Plan View
Scale: Scale to Fit

	D & C Investments Slidell, LA	
	Lightolier Gulfcoast	Harahan, LA
2/27/2005	Prepared for: Dammon Engineering	



Site Isometric View

Scale: Scale to Fit



D & C Investments
Slidell, LA

Lightolier Gulfcoast

Harahan, LA

2/27/2005

Prepared for: Dammon Engineering