



Pontchatrain Retail Center
Slidell, LA





Prepared for:
Chuck Dammon
Dammon Engineering

Prepared by:
Chip Beshenich
Specification
Lightolier Gulfcoast
1520 Kuebel St.
Harahan, LA 70123
504-473-1913
Fax: 504-733-8303

Design Phase



Luminaire Schedule

Type	Symbol	Brand Name	Catalog Number	Description	Lamp	Number Lamps	Lamp
P1		Lytepoles	901-5018-25-BLK-D1	1(S2) on a 25. foot pole with a 2.5 foot pedestal		N/A	
P2		Lytepoles	901-5018-25-BLK-D1	1(S1.1) on a 25. foot pole with a 2.5 foot pedestal		N/A	
P3		Lytepoles	901-6018-25-BLK-D3-90	2(S1.1) and 1(S1) on a 25. foot pole with a 2.5 foot pedestal		N/A	
S1.1		Hadco	PA3-C-S-A-4-400H-VOLT-H	House Side Shield	400 Watt Metal Halide	1	400
S1		Hadco	PA3-C-S-A-4-400H-VOLT		400 Watt Metal Halide	1	400
S2		Hadco	PA3-C-S-A-2-400H-VOLT	Type II Distribution	400 Watt Metal Halide	1	400
W1		Exceline	PC2M15MAL		150 Watt Metal Halide	1	150



Room / Site Summary

Site

Calculation Summary

	<u>Attained</u>	<u>Target</u>
Zonal Cavity Illum*:	N/A fc	N/A fc
Unit Power Density:	0.023 W/sq. ft.	N/A W/sq. ft.

*Zonal cavity illuminance does not take into account objects within the space, or daylighting.

Area Summary

Overall Size: 384.00 ft x 257.778 ft x N/A ft
 Reflectances: Ceiling: N/A
 Walls: N/A
 Floor: N/A

Total Cost: \$0.00

Luminaire Type Summary

<u>Type</u>	<u>Catalog Number</u>	<u>Quantity</u>
P1	Lytepoles 901-5018-25-BLK-D1	1
P2	Lytepoles 901-5018-25-BLK-D1	1
P3	Lytepoles 901-6018-25-BLK-D3-90	1
W1	Exceline "Precision Cutoff Medium Series" PC2M15MAL	2

Luminaire Location Summary

<u>Type</u>	<u>X</u>	<u>Y</u>	<u>Z</u>	<u>Orient</u>	<u>Tilt</u>	<u>Spin</u>	<u>AimX</u>	<u>AimY</u>	<u>AimZ</u>	<u>LLF</u>	<u>Tilt Factor</u>
P1	48.94	63.46	0.00	0.00	0.00	0.00	n/a	n/a	n/a		
P2	48.99	157.73	0.00	0.00	0.00	0.00	n/a	n/a	n/a		
P3	224.39	158.40	0.00	180.00	n/a	n/a	n/a	n/a	n/a		
W1	80.332	218.147	15.00	0.00	0.00	0.00	n/a	n/a	n/a	0.8	1.0
W1	140.332	218.147	15.00	0.00	0.00	0.00	n/a	n/a	n/a	0.8	1.0



Calculation Grid: Arbitrary Grid (Site)

Horizontal Illuminance

Calculation Grid Summary

Grid Name: Arbitrary Grid	Grid Origin: (12.08, 12.86)	Grid Surface: n/a
Grid Type: Horizontal Illuminance	Grid Orient:	Grid Hinge: 0
Grid Units: Footcandles	Grid Elev.: 0.00	Grid Azimuth: 0

Statistical Area Summary

<u>Stat. Area</u>	<u>Ave</u>	<u>Max</u>	<u>Min</u>	<u>Ave/Min</u>	<u>Max/Min</u>	<u>Std. Dev.</u>
Arbitrary Grid	1.70	6.85	0.00	Undefined	Undefined	1.39

Calculation Grid

	0.00	10.02	20.04	30.06	40.08	50.10	60.12	70.14	80.16	90.19	100.21	110.23	120.25	130.27	140.29
229.64			0.14	0.20	0.37	0.67	0.25	0.22	0.44	0.64	0.54	0.70	0.30	0.26	0.44
219.20			0.19	0.68	1.01	1.01	0.65	0.53	1.01	1.19	1.58	1.12	0.72	0.52	1.04
208.76			0.15	0.44	1.25	1.60	2.03	2.16	1.92	1.45	1.36	1.20	2.09	2.15	1.82
198.32			0.07	0.25	0.73	0.97									
187.89			0.11	0.27	1.10	1.45									
177.45			0.19	0.27	1.07	2.05									
167.01			0.28	0.40	0.71	2.60	3.29	1.95	1.41	1.16					
156.57			0.32	0.60	0.77	1.92	2.40	1.44	1.10	1.21					
146.13			0.38	0.82	0.99	2.28	2.52	1.51	1.14	1.38					
135.70			0.34	0.73	0.95	1.96	2.31	1.52	1.18	1.28					
125.26			0.38	0.61	1.09	3.37	3.87	2.17	1.52	1.24					
114.82			0.36	0.67	1.78	3.12	3.51	2.57	1.70	1.14					
104.38			0.27	0.76	2.49	3.50	3.17	2.50	1.64	0.97					
93.94			0.23	0.89	2.68	3.69	3.54	2.43	1.37	0.83					
83.50			0.23	0.72	2.21	3.01	2.81	2.17	1.23	0.69					
73.07			0.21	0.57	1.57	2.94	2.98	1.90	1.06	0.56	0.11	0.06	0.01	0.00	0.00
62.63			0.19	0.57	1.25	3.02	2.96	1.65	0.79						



Horizontal Illuminance

Calculation Grid

	150.31	160.33	170.35	180.37	190.39	200.41	210.43	220.45	230.47	240.49	250.51	260.53	270.56	280.58	290.60
229.64	0.59	0.37	0.34	0.32	0.33	0.36	0.38	0.42	0.41	0.37	0.33	0.27	0.23		
219.20	0.82	1.03	0.73	0.55	0.56	0.61	0.67	0.74	0.72	0.69	0.59	0.49	0.39		
208.76	1.54	0.96	0.74	0.85	0.93	1.01	1.16	1.25	1.17	1.16	0.98	0.80	0.61		
198.32	0.48	0.70	0.95	1.23	1.54	1.68	1.99	2.08	1.99	1.79	1.54	1.23	0.89		
187.89	0.64	1.00	1.51	1.75	2.01	1.83	2.04	2.40	2.63	2.59	2.26	1.73	1.21		
177.45	0.73	1.27	1.94	2.47	3.09	2.85	3.25	3.60	4.09	3.82	2.72	2.31	1.53		
167.01	0.78	1.30	1.96	3.34	4.96	4.69	5.33	5.27	6.57	5.16	3.03	2.28	1.79		
156.57	0.80	1.27	2.00	2.88	4.18	5.01	6.28	5.92	6.01	4.18	2.80	2.22	1.98		
146.13	0.88	1.44	1.97	2.08	2.89	4.91	6.38	5.94	4.36	2.94	2.52	2.40	2.21		
135.70	0.81	1.27	1.99	2.77	4.00	4.98	6.30	5.91	5.62	4.00	2.78	2.22	2.01		
125.26	0.78	1.30	1.98	3.39	5.01	4.90	5.53	5.48	6.85	5.19	3.03	2.27	1.82		
114.82	0.73	1.27	1.97	2.58	3.33	3.06	3.47	3.79	4.37	4.04	2.77	2.34	1.56		
104.38	0.65	1.03	1.56	1.82	2.08	1.85	2.06	2.44	2.72	2.69	2.32	1.81	1.25		
93.94	0.50	0.73	1.01	1.29	1.61	1.77	2.01	2.17	2.09	1.88	1.61	1.28	0.93		
83.50	0.34	0.46	0.61	0.83	0.95	1.06	1.25	1.33	1.24	1.22	1.03	0.84	0.64		
73.07	0.21	0.27	0.37	0.49	0.55	0.63	0.69	0.77	0.76	0.73	0.62	0.52	0.41		
62.63															



Horizontal Illuminance

Calculation Grid

	300.62	310.64	320.66	330.68
229.64				
219.20				
208.76				
198.32				
187.89				
177.45				
167.01				
156.57				
146.13				
135.70				
125.26				
114.82				
104.38				
93.94				
83.50				
73.07				
62.63				



Horizontal Illuminance

Calculation Grid

	0.00	10.02	20.04	30.06	40.08	50.10	60.12	70.14	80.16	90.19	100.21	110.23	120.25	130.27	140.29
52.19			0.26	0.73	1.34	2.81	2.46	1.32	0.58						
41.75			0.20	0.60	1.20	2.64	2.60	1.41	0.63						
31.31			0.16	0.45	1.35	2.91	2.79	1.60	0.73						
20.88			0.21	0.49	1.62	2.51	2.32	1.56	0.71						
10.44			0.17	0.64	1.71	2.58	2.56	1.37	0.56						
0.00															



Horizontal Illuminance

Calculation Grid

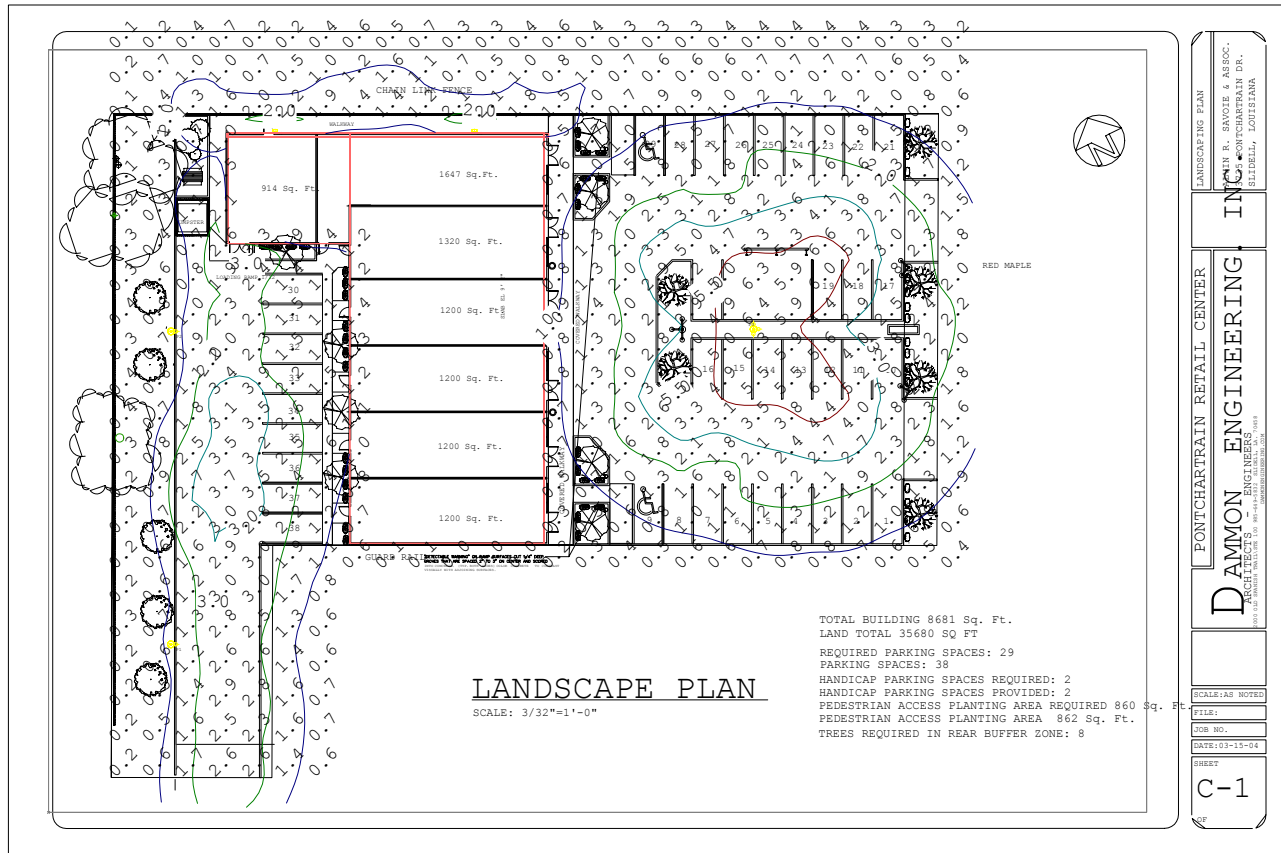
	150.31	160.33	170.35	180.37	190.39	200.41	210.43	220.45	230.47	240.49	250.51	260.53	270.56	280.58	290.60
52.19															
41.75															
31.31															
20.88															
10.44															
0.00															



Horizontal Illuminance

Calculation Grid

	300.62	310.64	320.66	330.68
52.19				
41.75				
31.31				
20.88				
10.44				
0.00				



Site Plan View
Scale: Scale to Fit



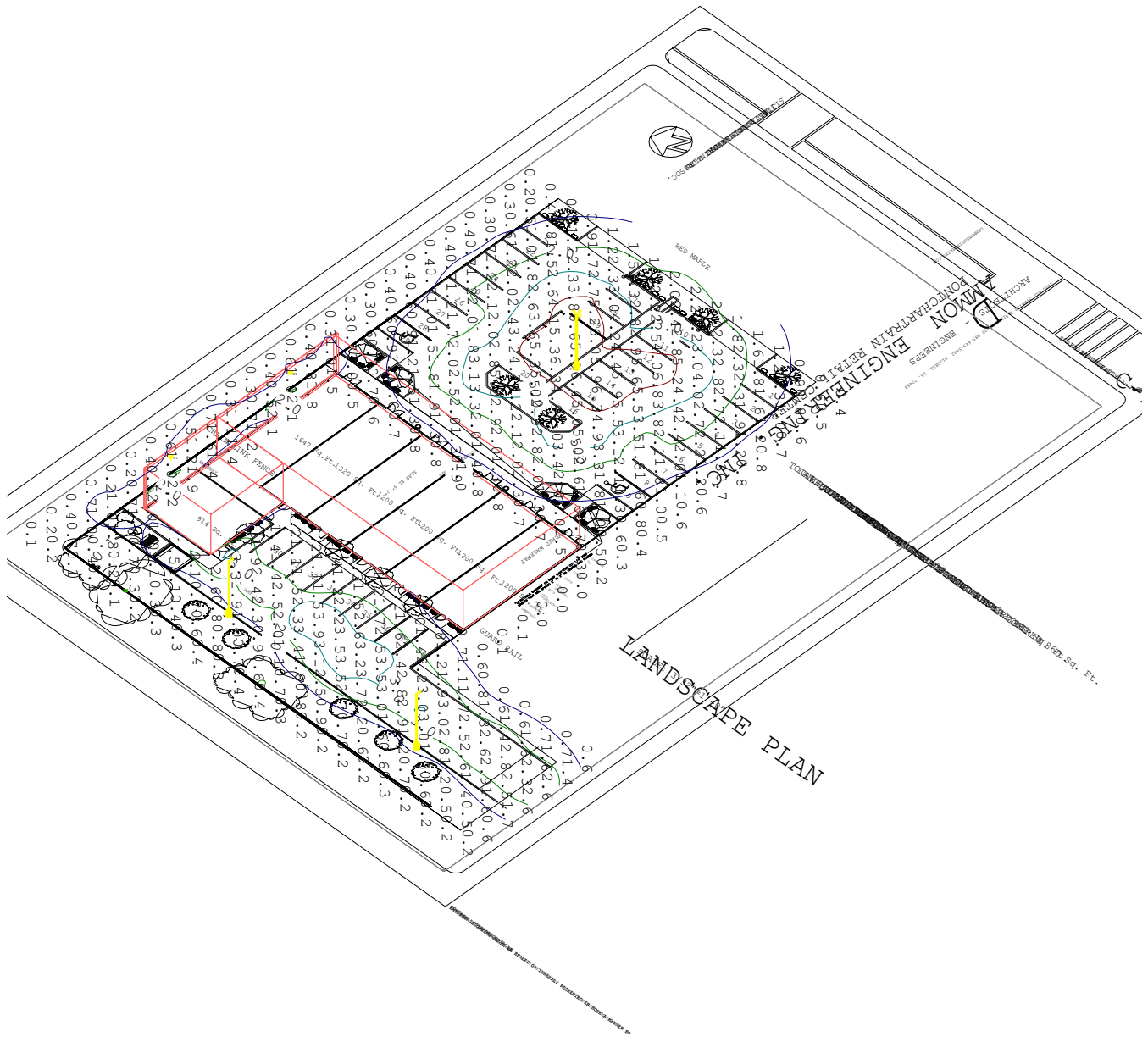
Pontchartrain Retail Center
Slidell, LA

Lightolier Gulfcoast

Harahan, LA

2/27/2005

Prepared for: Dammon Engineering



Site Isometric View

Scale: Scale to Fit



Pontchatrain Retail Center
Slidell, LA

Lightolier Gulfcoast

Harahan, LA

2/27/2005

Prepared for: Dammon Engineering