

DAMMON
ENGINEERING, INC.

CHIEF ENGINEER
EMILETT
DAMMON, P.E.
CHIEF ARCHITECT
ROBERT
WILTSE

1095 FLORIDA AVENUE
SUITE LL, LA, 70458
OFFICE: 985-649-5832
FAX: 985-641-5950

WEBSITE:
WWW.DAMMONENGINEERING.COM
EMAIL:
DAMMONENG@BELL SOUTH.NET

ARCHITECTURE
ENGINEERING
STUDIES
PLANNING
INVESTIGATION
EXPERT WITNESS

**RESTAURANT
RENOVATION**

OSAKA
287 S. MORRISON BLVD
HAMMOND, LA

**FOUNDATION
PLAN**

REV:

SCALE: AS NOTED

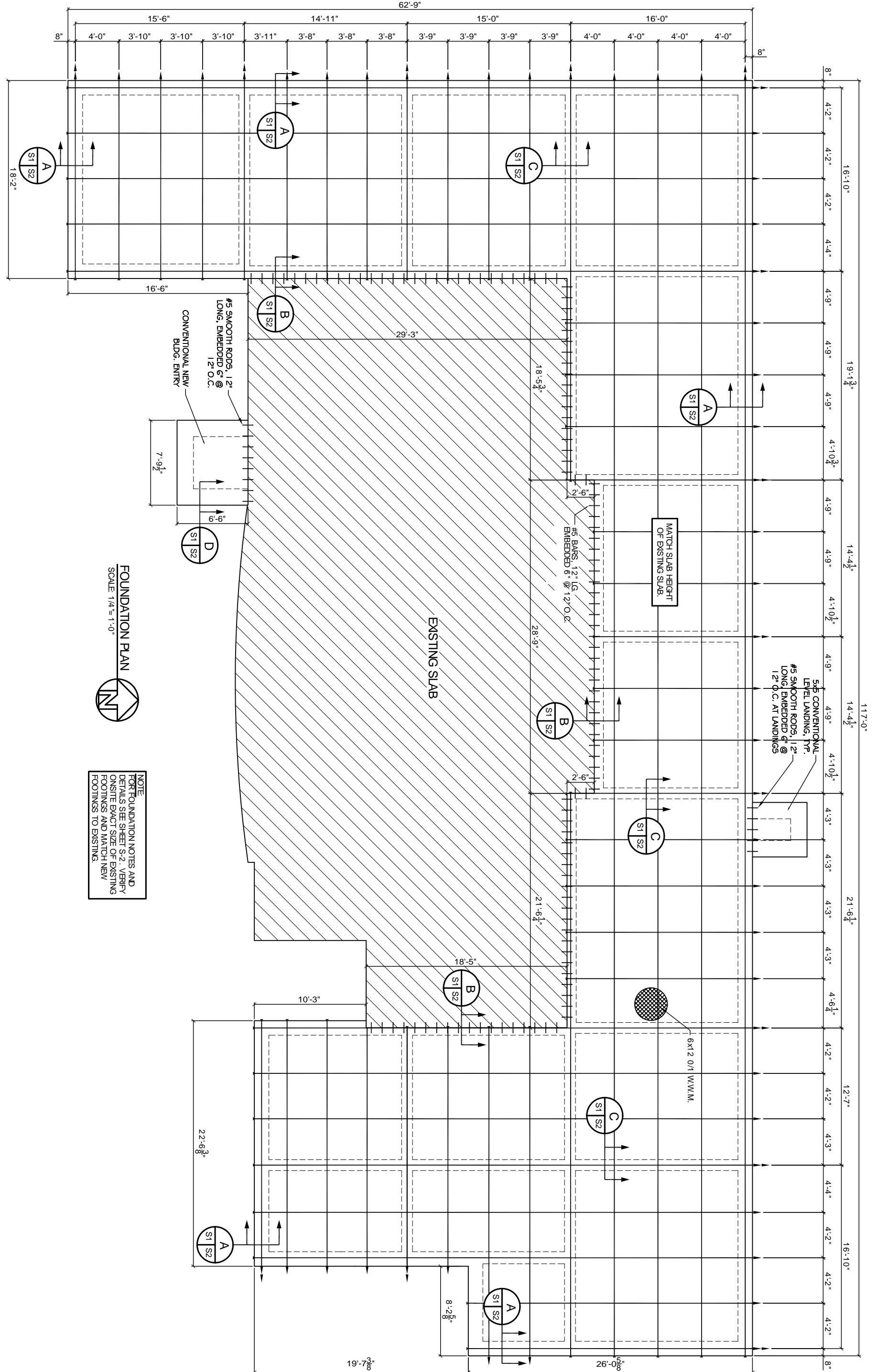
JOB#: 1943

DATE: 7-25-08

SHEET 4

S-1

OF 22



FOUNDATION PLAN
SCALE: 1/4" = 1'-0"

NOTE
FOR FOUNDATION NOTES AND
DETAILS SEE SHEET S-2. VERIFY
ON-SITE EXACT SIZE OF EXISTING
FOOTINGS AND MATCH NEW
FOOTINGS TO EXISTING.