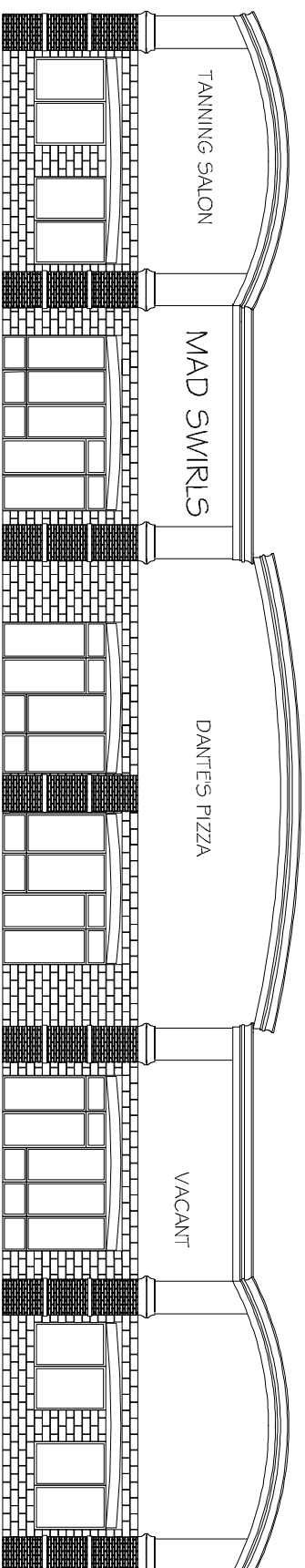


# MAD SWIRLS

## RENOVATION



FRONT ELEVATION

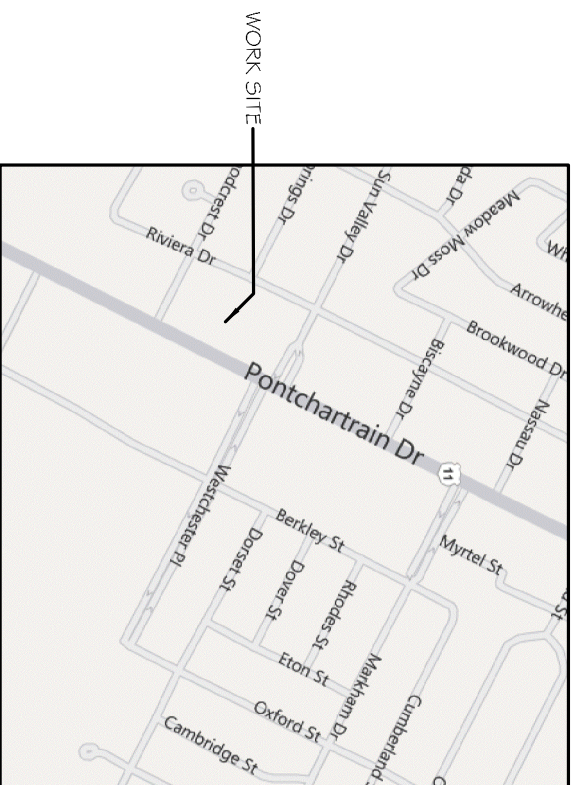
### INTERNATIONAL BUILDING CODE 2006

- OCCUPANCY CLASSIFICATION: BUSINESS, GROUP B. (SEC. 304.1)
- OCCUPANT LOAD: (TBL. 1004.1.1)
- BUSINESS AREAS = 100 GROSS SQ.FT. / OCCUPANT
- 1,302 SQ.FT. GROSS BUILDING = TOTAL OF 14 OCCUPANTS
- EXIT ACCESS REQUIREMENTS: (SEC. 101.9)
- EXIT REQUIRED FOR < 49 OCCUPANTS IN BUSINESS OCCUPANCY (2 EXIT PROVIDED)
- EXIT ACCESS TRAVEL DISTANCE = 200 UNSPRINKLED
- CONSTRUCTION CLASSIFICATION: (SEC. 602.2) TYPE II B
- FIRE RESISTANCE RATING REQUIREMENTS FOR BLDG. ELEMENTS: (TBL. 601) STRUCTURAL FRAME = 0 HRS.
- BEARING WALLS (INTERIOR AND EXTERIOR) = 0 HRS.
- NON-BEARING WALLS = 0 HRS.
- FLOOR CONSTRUCTION = 0 HRS.
- ROOF CONSTRUCTION = 0 HRS.
- FIRE RESISTANCE RATING REQUIREMENTS FOR EXTERIOR WALLS: (TBL. 602) EXTERIOR WALLS WITH  $t < 7$  = < 90' FIRE SEPARATION DISTANCE = 0 HR.
- FIRE ALARM SYSTEM REQUIREMENTS: (SEC. 907)
- THIS BLDG. DOES NOT REQUIRE A FIRE ALARM SYSTEM IN ACCORDANCE WITH SEC. 907.2.2 & SEC. 907.2.7
- CONSTRUCTION DOCUMENTS: (SEC. 1603)
- THIS BLDG. SHALL BE DESIGNED IN ACCORDANCE WITH IBC SECTION 1609 AS A FULLY ENCLOSED BLDG. USING THE FOLLOWING INFORMATION:
- WIND DESIGN DATA:
- DETERMINATION OF WIND LOADS SHALL BE IN ACCORDANCE WITH IBC SEC. 1609.4
- BASIC WIND SPEED (3 SECOND GUST) = 130 MPH (FIG. 1609)
- IMPORTANCE FACTOR: CATEGORY II BLDG.,  $I_E = 1.00$ ,  $I_S = 1.00$ ,  $I_W = 1.00$  (TBL. 1604.5)
- EXPOSURE B
- DESIGN WIND PRESSURE (ASCE 7-05 FIG. 6-2): 33.6 PSF
- INTERNAL PRESSURE COEFFICIENT (ASCE 7-05 FIG. 6-5):  $\pm 0.18$
- LIVE LOADS: (SEC. 1607)
- ASSEMBLY AREA WITH MOVABLE SEATS (TBL. 1607.1): 100 PSF
- OFFICE (TBL. 1607.1): 50 PSF
- ROOF LIVE LOAD (TBL. 1607.1) = 20 PSF UNIFORM, 300 LB. CONCENTRATED
- GROUND SNOW LOAD (FIG. 1608.2) = 0 PSF

BASED ON THE SURVEY OF THIS PROPERTY BY J.V. BURKES & ASSOC., INC.  
THIS PROPERTY IS IN A SPECIAL FLOOD HAZARD AREA.  
F.I.R.I.M. COMMUNITY MAP NO. 220204 0010C E; DATE 4/2/199

3971 PONTCHARTRAIN DRIVE  
UNIT 3  
SLIDELL, LA

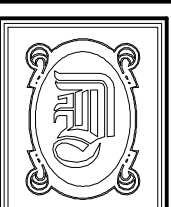
SQUARE FEET TOTAL: 1,302 SQ. FT.



VICINITY MAP  
N.T.S.



INDEX OF DRAWINGS	
DWG#	DRAWING NAME
-	COVER SHEET
A-1	FLOOR PLAN / REFLECTED CEILING PLAN
EP-1	ELECTRICAL POWER PLANS



**DAMMON ENGINEERING, INC.**  
554 OLD SPANISH TRAIL OFFICE: (985) 649-5832  
SLIDELL, LA 70458 FAX: (985) 641-5950  
WEBSITE: WWW.DAMMONENGINEERING.COM  
EMAIL: DAMMONENG@BELLSOUTH.NET

DATE: 05-02-11  
JOB NO. 2110

MAD SWIRLS  
3971 PONTCHARTRAIN DR.  
SUITE 3  
SLIDELL, LA 70458