

HVAC NOTES

1. CONCEALED DUCTWORK TO BE GALVANIZED SHEET METAL LINED WITH NEOPRENE COATED 1/2" THICK, 15 POUNDS PER CUBIC FOOT DUCT INSULATION. MIN R-6. INSTALLED PER SMACNA STANDARDS.
2. EXPOSED DUCTWORK TO BE GALVANIZED SHEET METAL LINED WITH NEOPRENE COATED 1/2" THICK, 15 POUNDS PER CUBIC FOOT DUCT INSULATION. MIN R-6. INSTALLED PER SMACNA STANDARDS.
3. CONDENSATE OVERFLOW DRAIN LINES SHALL BE PVC SCH 40 AND SHALL BE INSTALLED COMPLETELY SEPARATE TO SANITARY SEWER. DRAINING TO BE RUN TO PLUMBERS P-TRAPE WITHIN FIVE FEET OF AIR HANDLING UNITS.
4. ROUND FLEXIBLE DUCT TO BE UL-181, CLASS 1, AIR DUCT MATERIALS.
5. DUCT SIZES SHOWN ARE CLEAR, NETSE DIMENSIONS.
6. IN ALL SYSTEMS OVER 2000 CFM AND LESS THAN 15,000 CFM, SMOKE DETECTORS SHALL BE INSTALLED IN ACCORDANCE WITH NFPA 72E. IN THE RETURN DUCT DOWNSTREAM OF THE AIR HANDLING UNIT AND ALL FILTERS TO AUTOMATICALLY STOP THE FAN.
7. PROVIDE UL LISTED 125 F. FREESTAT IN RETURN AIR OF EACH SYSTEM UNDER 2000 CFM TO SHUT DOWN THE FAN IN THE EVENT OF FIRE.
8. PROVIDE UL RATED FIRE DAMPERS WHERE REQUIRED AT ALL DUCT PENETRATIONS OF 8" OR GREATER.
9. ALL AIR HANDLING SYSTEMS TO BE BALANCED TO ASSURE PROPER AIR FLOWS PER PLANS.
10. ALL AIR HANDLING SYSTEMS TO BE AUTOMATIC CHANGEOVER WITH HEAT SWITCH.
11. EXHAUST FAN EQUAL TO AVOID PEN-110 OR EQUAL. FAN SHALL BE CONTROLLED BY A SWITCH ON THE WALL IN THE SAME LOCATION AS LIGHT SWITCHES. PROVIDE BACK DRAMT DAMPER TO PREVENT REVERSE FLOW AND INSTALL FAN PROOF GRILLE VENT IN PROPER ROOF LOCATION FOR EXHAUST.
12. ALL SUPPLY AIR VENTS SHALL BE EQUIPPED WITH AIR CONTROL DAMPERS.
13. ALL SUPPLY AIR VENTS SHALL BE SHOWN ON ARCH DRAWS.
14. LOCATE OUTDOOR UNITS AS SHOWN ON ARCH DRAWS.
15. REFRIGERANT LINES SHALL BE SIZED BY UNIT MANUFACTURER AND INSTALLED ACCORDING TO MANUFACTURER'S INSTRUCTIONS.
16. FRESH AIR SHALL BE SUPPLIED TO EACH AIR HANDLER THROUGH EXTERIOR WALL DUCT SUPPLIED WITH A CONTROL DAMPER.
17. INSTALL FIRE DAMPER WHERE S.A. & R.A. DUCTS PENETRATE 1 HOUR RATED CEILING.
18. ALL ELECTRICAL, MECHANICAL, AND PLUMBING PENETRATING FIRE WALLS SHALL BE FIRE CALLED. (PENETRATIONS THROUGH RATED CONSTRUCTION SHALL BE SEALED WITH A MATERIAL CAPABLE OF PREVENTING THE PASSAGE OF FLAMES AND HOT GASES WHEN TESTED IN ACCORDANCE WITH ASTM E-141).
19. ALL MECHANICAL SERVICES ARE DRAWN DIAGNOSTICALLY. CONTRACTOR TO VERIFY ALL SERVICE LOCATIONS ON SITES BY VISUAL INSPECTION, ETC.
20. FIELD VERIFY ALL SERVICE LOCATIONS ON SITES BY VISUAL INSPECTION, ETC.
21. REFER TO RELEVANT CEILING PLAN FOR FAN, GRILLE AND DIFFUSER LOCATIONS AND COORDINATE AS REQUIRED.
22. FINAL LOCATION OF TEMPERATURE CONTROLS TO BE COORDINATED WITH OWNER AT JOB SITE.
23. PROVIDE AND INSTALL SMOKE DETECTORS AS APPROVED BY LOCAL AHS. PLACE NEAR R.A. AND S.A. OPENINGS OF AHU AND PROVIDE WITH ACCESS PANEL, WIRING BY ELECTRICAL CONTRACTOR.
24. FRESH AIR INTAKES ARE REQUIRED TO HAVE MOTORIZED OR GRAVITY DAMPERS TO SHUT OFF WHEN SYSTEM IS NOT RUNNING.

SINGLE PACKAGE ROOF-TOP AC UNITS SCHEDULE

UNIT NUMBER	TOTAL CAPACITY	MINIMUM CAPACITY	STATIC PRESSURE	EXTERIOR AIR	COOLING CAPACITY	ELECTRICAL DATA	TRANE	MODEL NUMBER	UNIT WEIGHT								
RTU-1	4000	400	0.50	11.97000	101.410	80	67	60.1	57.9	208	3	1.7	49.6	60	200.000	15C120F	1200
RTU-2	4000	400	0.50	11.97000	101.410	80	67	60.1	57.9	208	3	1.7	49.6	60	200.000	15C120F	1200
RTU-3	6000	400	0.50	18.61000	151.000	80	67	60.8	56.9	208	3	2.9	1.00		250.000	15D160F	2500

GAS-FIRED INFARED TUBE HEATERS SCHEDULE

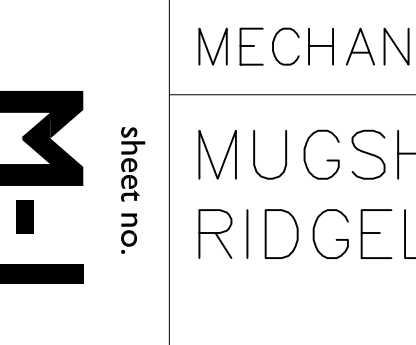
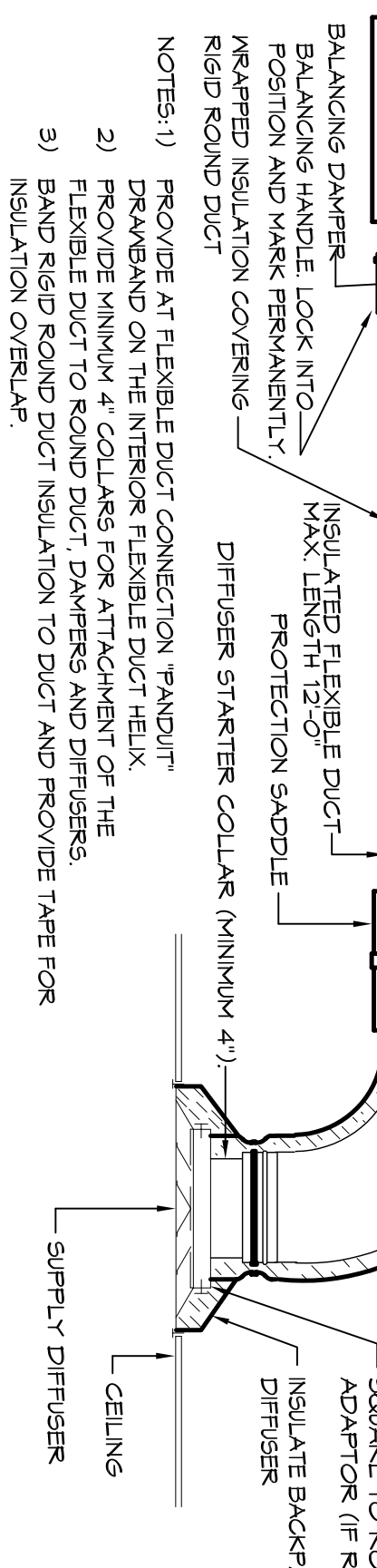
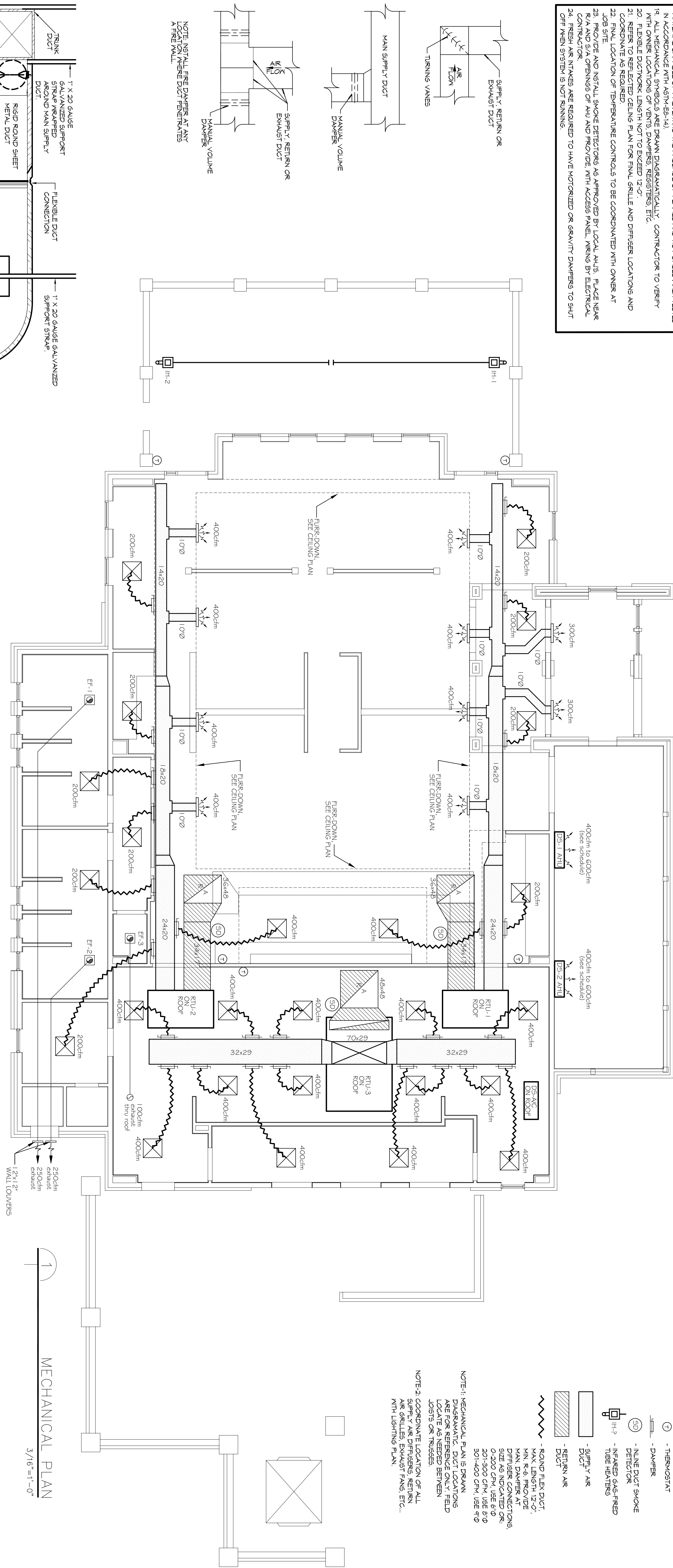
UNIT NO.	SERVICE AREA	BTUH	MINIMUM MOUNT HT.	ELECTRICAL (V/PH/Hz/amps)
H-1	DINING PANO	50,000	10 FT.	120V/160A/3ø
H-2	DINING PANO	50,000	10 FT.	120V/160A/3ø

MINI-SPLIT DUCTLESS AC SYSTEM SCHEDULE

UNIT NUMBER	ROOM	TONS	BTUH	SEASONAL ENERGY RATIO	MINIMUM CAPACITY	COOLING CAPACITY	AIR HANDLING UNIT	CONDENSING UNIT	WEIGHT			
AC-1	3	120	480	12.0	34,000	16,000	44XWV (2)	474	6535A	2091	2845	165

EXHAUST FAN SCHEDULE

NO.	LOCATION	CFM	EXT. S.F.	MOTOR HP(W)	TYPE	DRIVE	ELECTRICAL (V/PH/Hz)	MANUF.
EF-1	WOMEN RESTROOM	250	0.3	2.12(W)	CEILING DIRECT	120V/160	BROWN	
EF-2	WOMEN RESTROOM	250	0.3	2.12(W)	CEILING DIRECT	120V/160	BROWN	
EF-3	RESTROOM	100	0.3	1.21(W)	CEILING DIRECT	120V/160	BROWN	



In joint venture with:

DAMMON ENGINEERING, INC.
Architects & Engineers

Chief Architect: Kevin J. Kirchner, NCBAB
Senior Engineer: Brian Minton, PE
www.dammonengineering.com
dammon@dammonengineering.com
5615 S. University Blvd., Suite 200
Siddell, LA 70458
F: 985.641.5950

MECHANICAL PLAN

MUGSHOTS GRILL & BAR

RIDGELAND, MS

sheet no. _____ of _____ sheets

M-1

Meyer Engineers, Ltd.
ENGINEERS & ARCHITECTS

Meyer Engineers, Ltd.
4937 Hearst Street . Suite 1B . Metairie, Louisiana 70001
2031 Claiborne Street . Mandeville, Louisiana 70448
phone.504.885.9892 . fax.504.887.5056
website.www.meyer-e-l.com

Project no. 20-1348
JTL
drawn
checked
date
revised

07.09.2014
00.00.0000
00.00.0000
00.00.0000