

**LEGEND**  
 --- SANITARY WASTE TO GREASE TRAP  
 - - - - - SANITARY WASTE DIRECTLY TO SEWER LINE

**PLUMBING PLAN**  
 3/16" = 1'-0"

**PLUMBING ABBREVIATIONS**

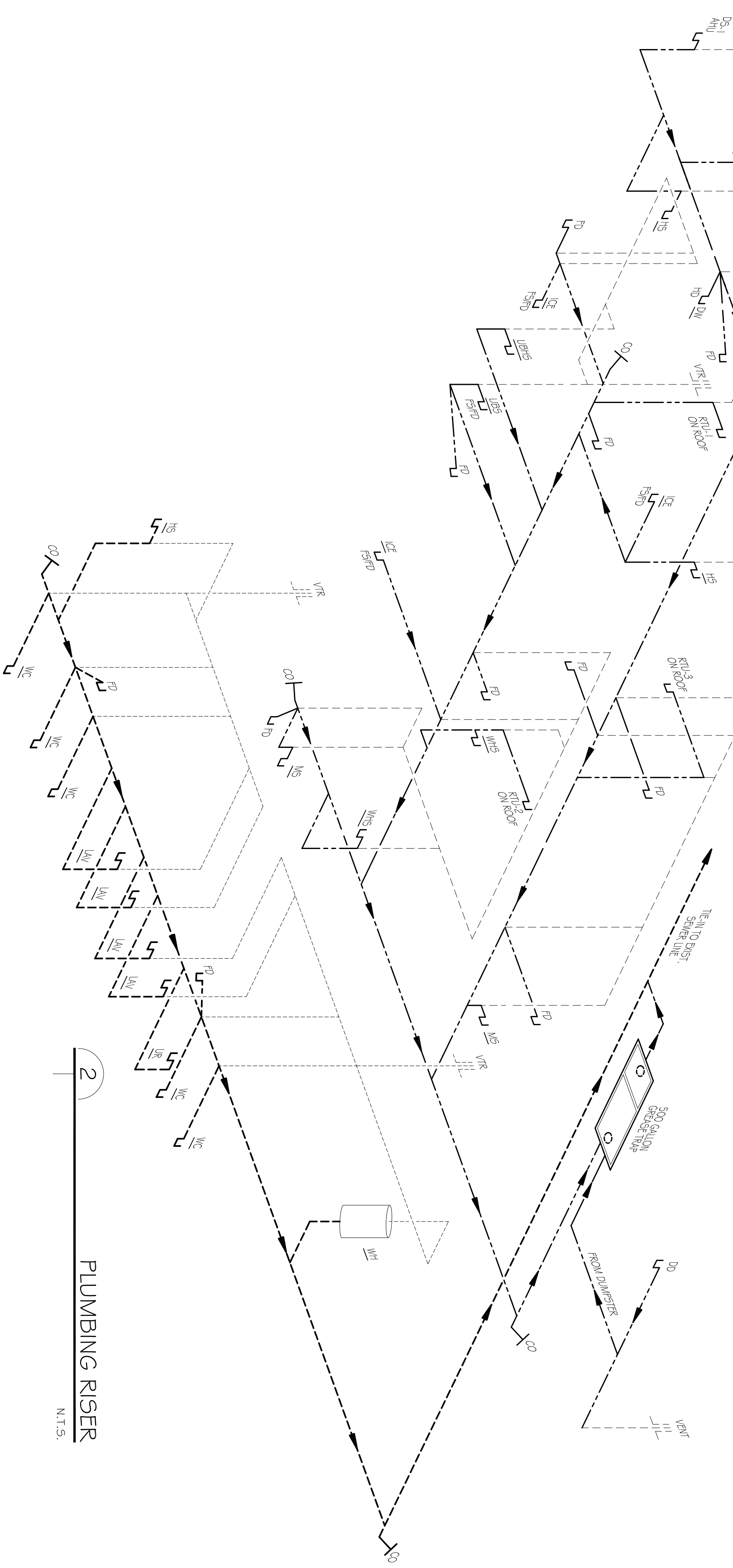
SYM.	DESCRIPTION
WC	WATER CLOSET
UR	URINAL
LAV	LAVATORY
MOP	MOP SINK
FS/HD	FLOOR SINK W/LOOK DRAIN
HD	HUB DRAIN
HS	HAND SINK
WHS	WALL-MNTD. HAND SINK
UBS	UNDER BAR SINK
FD	FLOOR DRAIN
WH	WATER HEATER
AHU	AHU DRAIN
DD	DISHWASHER DRAIN
DW	DISH WASHER
TS	TRIPLE SINK

**PLUMBING FIXTURE SCHEDULE**

MARK	DESCRIPTION	TYPE	ROUGH-IN SIZES	NOTES
			WASTE VENT CW H.W.	
WC	WATER CLOSET	VALVE	4" - 4"	1" - -
UR	URINAL	-	2" - 2"	1" - -
LAV	LAVATORY	-	2" - 2"	1/2" - 1/2"
MOP	MOP SINK	-	2" - 2"	1/2" - 1/2"
FS/HD	FLOOR SINK W/LOOK DRAIN	-	2" - 2"	1/2" - 1/2"
HD	HUB DRAIN	-	2" - 2"	1/2" - 1/2"
HS	HAND SINK	-	2" - 2"	1/2" - 1/2"
WHS	WALL-MNTD. HAND SINK	-	2" - 2"	1/2" - 1/2"
UBS	UNDER BAR SINK	-	2" - 2"	1/2" - 1/2"
FD	FLOOR DRAIN	-	2" - 2"	1/2" - 1/2"
WH	WATER HEATER	-	2" - 2"	3/4" - 3/4"
AHU	AHU DRAIN	-	4" - 2"	- -
DD	DISHWASHER DRAIN	-	2" - 2"	1/2" - 1/2"
DW	DISH WASHER	-	2" - 2"	1/2" - 1/2"
TS	TRIPLE SINK	-	2" - 2"	1/2" - 1/2"

**FIXTURE NOTES:**  
 1. PROVIDE CHAIR CARRIER FOR WALL HUNG FIXTURES.  
 2. PROVIDE CHAR CARRIER FOR WALL HUNG FIXTURES.  
 3. INSTALL CONTINUOUS SHIP VALVE ON ALL FLOOR DRAINS.

In joint venture with:



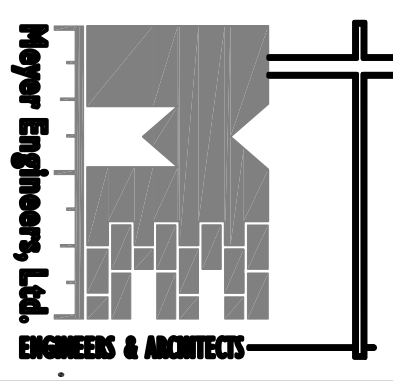
**PLUMBING RISER**  
 N.T.S.

**DAMMON ENGINEERING, INC.**  
*Architects & Engineers*

Chief Architect: Kevin J. Kirchen, NCARB  
 Chief Engineer: Brian Maston, PE  
 5000 S. Main Street  
 Sibley, LA 70458  
 www.dammonengineering.com  
 dammoneng@dammoneng.com  
 F: 985.641.5950

PLUMBING PLAN & RISER  
 MUGSHOTS GRILL & BAR  
 RIDGELAND, MS

sheet no. **P-1**  
 of \_\_\_\_\_ sheets



**Meyer Engineers, Ltd.**  
 4937 Hearst Street . Suite 1B . Metairie, Louisiana 70001  
 2031 Claiborne Street . Mandeville, Louisiana 70448  
 phone.504.885.9892 . fax.504.887.5056  
 website.www.meyer-e-l.com

Project no.	20-1348/
drawn	JTL
checked	CKD
date	07/22/2014
revised	