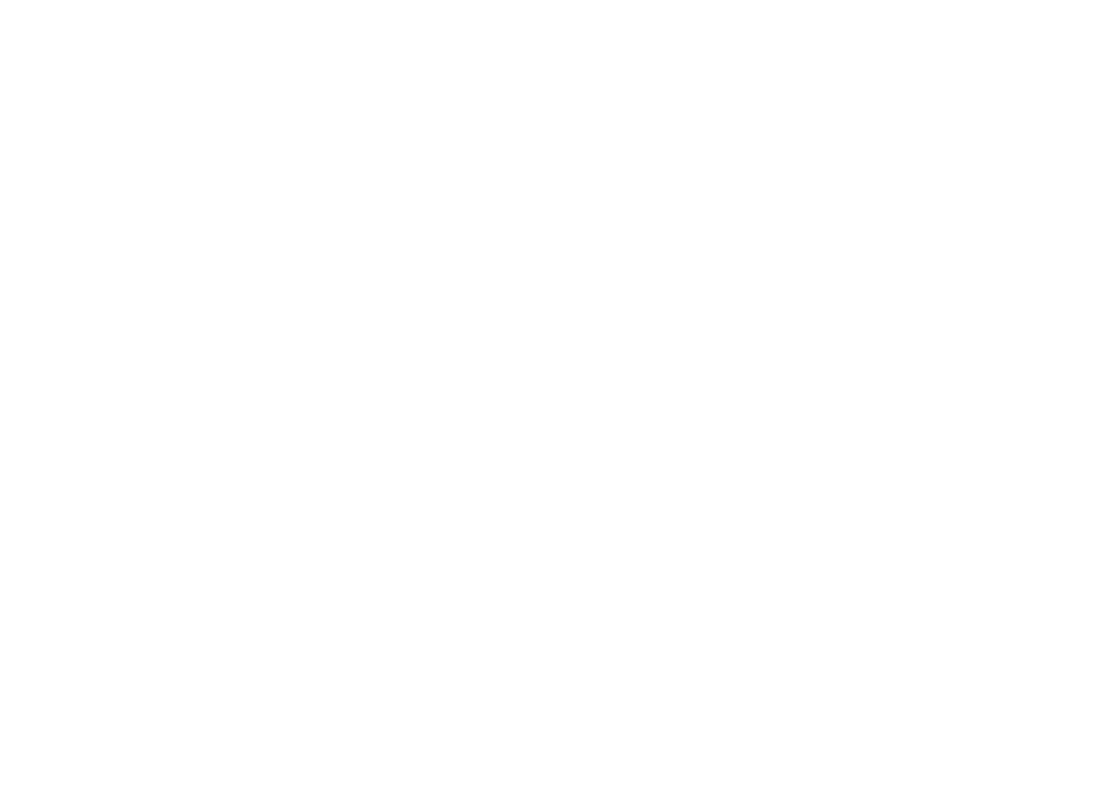
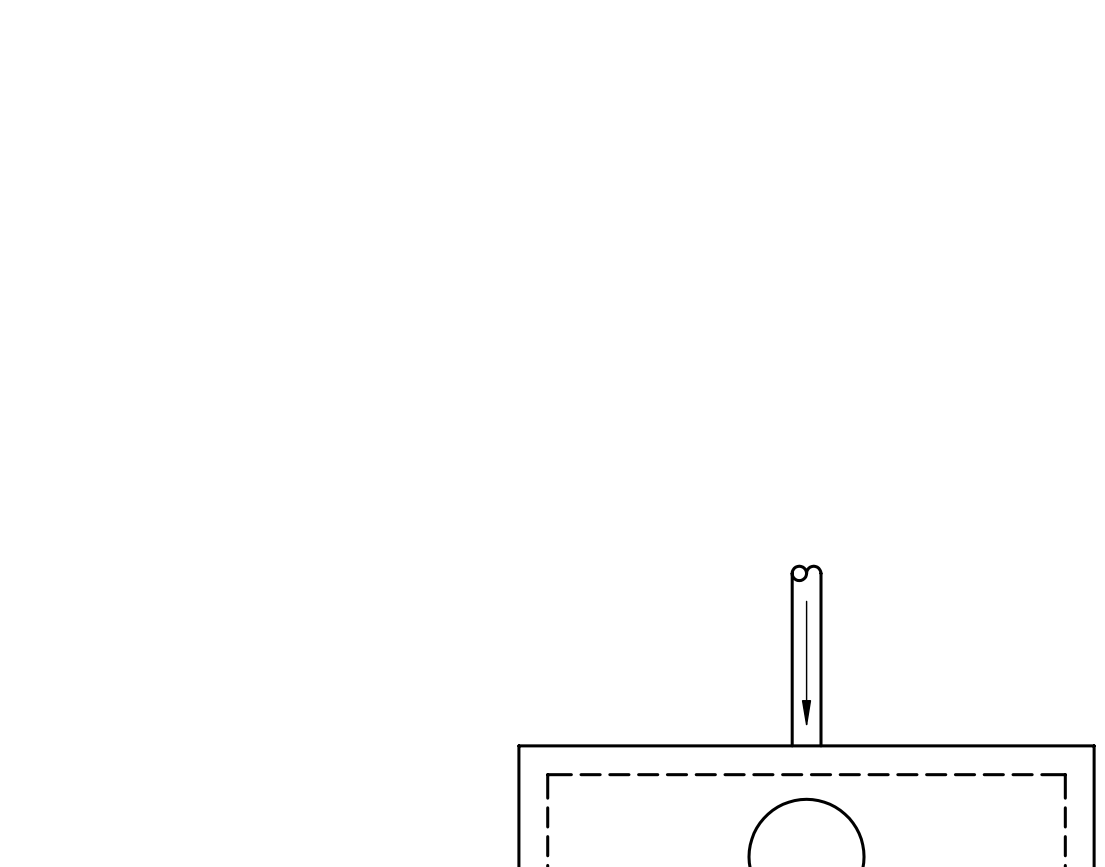
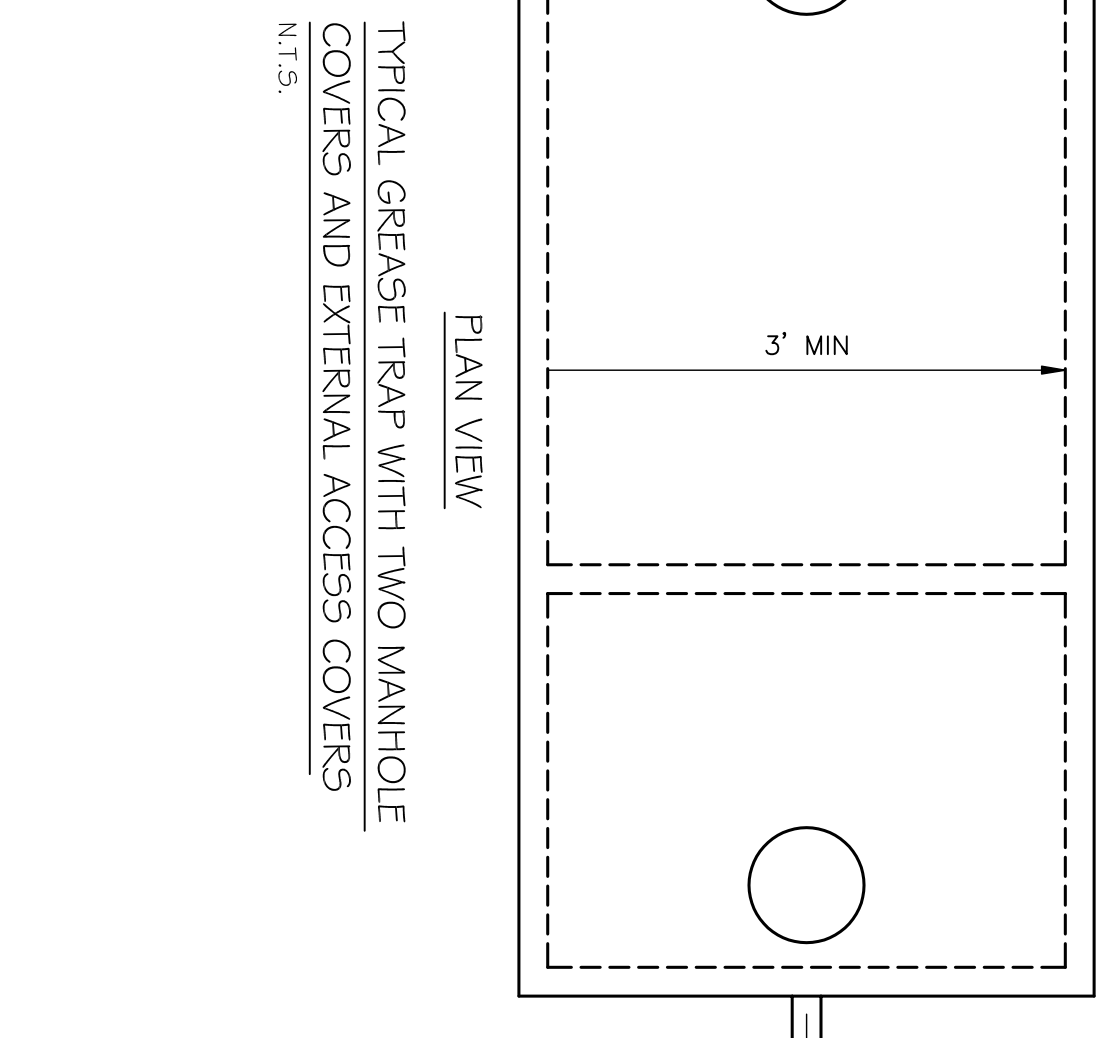


- PLUMBING NOTES**
1. PROVIDE ALL LABOR, MATERIAL, AND EQUIPMENT FOR A COMPLETE OPERATING SYSTEM. THE SYSTEM SHALL INCLUDE HOT AND COLD WATER PIPING, SEWER AND VENT PIPING, INSULATION, WATER HEATER, HANGERS, VALVES & SUPPORTS WITHOUT ANY RESTRICTIONS TO COLUMN, CUT AND PATCH AS REQUIRED TO INSTALL PIPES.
 2. ALL WORK AND MATERIAL SHALL CONFORM STRICTLY TO THE LATEST LOCAL, CITY, PARISH, STATE AND NATIONAL GOVERNING CODES.
 3. ALL WORK SHALL BE DONE IN ACCORDANCE WITH ALL EXISTING UTILITY LOCATIONS, ELEVATIONS, AND SIZES PRIOR TO COMMENCING ANY WORK. CONTRACTOR SHALL LAY NECESSARY FITS FOR THE UTILITIES CONNECTIONS.
 4. CONTRACTOR IS RESPONSIBLE TO VERIFY THE EXISTING INVERTS AND SET NEW INVERTS OF SEWERAGE AND DRAINAGE PIPES.
 5. SEWERAGE LINES 3-INCH AND SMALLER SHALL BE SLOPED 1/8" PER FOOT AND LINE 4-INCH AND LARGER SHALL BE 1/4" PER FOOT.
 6. TEST ALL PIPING AT REQUIRED PRESSURE.
 7. TEST ALL PIPING AND FITTINGS DECONTAMINATED WITH STRUCTURAL SYSTEM, MECHANICAL SYSTEM AND ELECTRICAL TO INSURE NO TRACES WILL CONFLICT WITH EACH OTHER.
 8. DO NOT SCALE DRAWINGS. SEE ARCHITECTURAL DRAWINGS FOR EXACT LOCATIONS OF DOORS, WINDOWS, WALLS, FIXTURES, ETC.
 9. ALL WATER MAINS AND PIPING NOT SHOWN FOR CLARITY. ALL LOCATIONS FIELD VERIFIED.
 10. DOMESTIC HOT AND COLD WATER PIPING AND FITTINGS UNDER SLAB SHALL BE ASTM B88 COPPER WATER DOMESTIC WATER PIPING AND FITTINGS ABOVE THE SLAB SHALL BE ASTM B88 COPPER WATER TUBE, TYPE L. HARD DRAWN WITH COPPER PRESSURE TIE FITTINGS. ANSI B1.6.22. THE JOINTS SHALL BE SOLDERED TYPING USING ASTM B32. ALLOY GRADE 95A (95.5) SOLDER.
 12. SOIL, WASTE, VENT PIPING AND FITTINGS ABOVE THE SLAB SHALL BE SERVICE WEIGHT CAST IRON PIPE WITH BELL AND SPIGOT ENDS AND ONE PIECE NEOPRENE INSERT TYPE GASKET. USE PVC SCHEDULE 40 WORKING PRESSURE AND FITTINGS ABOVE THE FLOOR SHALL BE INSULATED WITH 1/2" THICK FIBERGLASS INSULATION AND JACKET.
 13. ALL ELECTRICAL, MECHANICAL AND PLUMBING PENETRATING FIRE PARTITIONS SHALL BE FIRE CALKED. (PREVENTIONS THROUGH RATED CONSTRUCTION SHALL BE SEALED WITH A MATERIAL CAPABLE OF PREVENTING THE PASSAGE OF FLAMES AND HOT GASES WHEN TESTED IN ACCORDANCE WITH ASTM E014.)
 15. ALL PLUMBING LINES SHOWN ARE DIAGRAMMATIC.



In joint venture with:

DAMMON ENGINEERING, INC.
Architects & Engineers

Chief Engineer: Brian Metcalf, PE
 334 Old Spanish Trail
 Metairie, LA 70008

www.dammonengineering.com
 dammon@dammoneng.com
 F: 985.641.3590

sheet no. **P-3**
 of _____ sheets

PLUMBING NOTES & DETAILS

MUGSHOTS GRILL & BAR
 RIDGELAND, MS

Meyer Engineers, Ltd.
 4937 Hearst Street . Suite 1B . Metairie, Louisiana 70001
 2031 Claiborne Street . Mandeville, Louisiana 70448
 phone.504.885.9892 . fax.504.887.5056
 website.www.meyer-e-l.com

Meyer Engineers, Ltd.
 ENGINEERS & ARCHITECTS