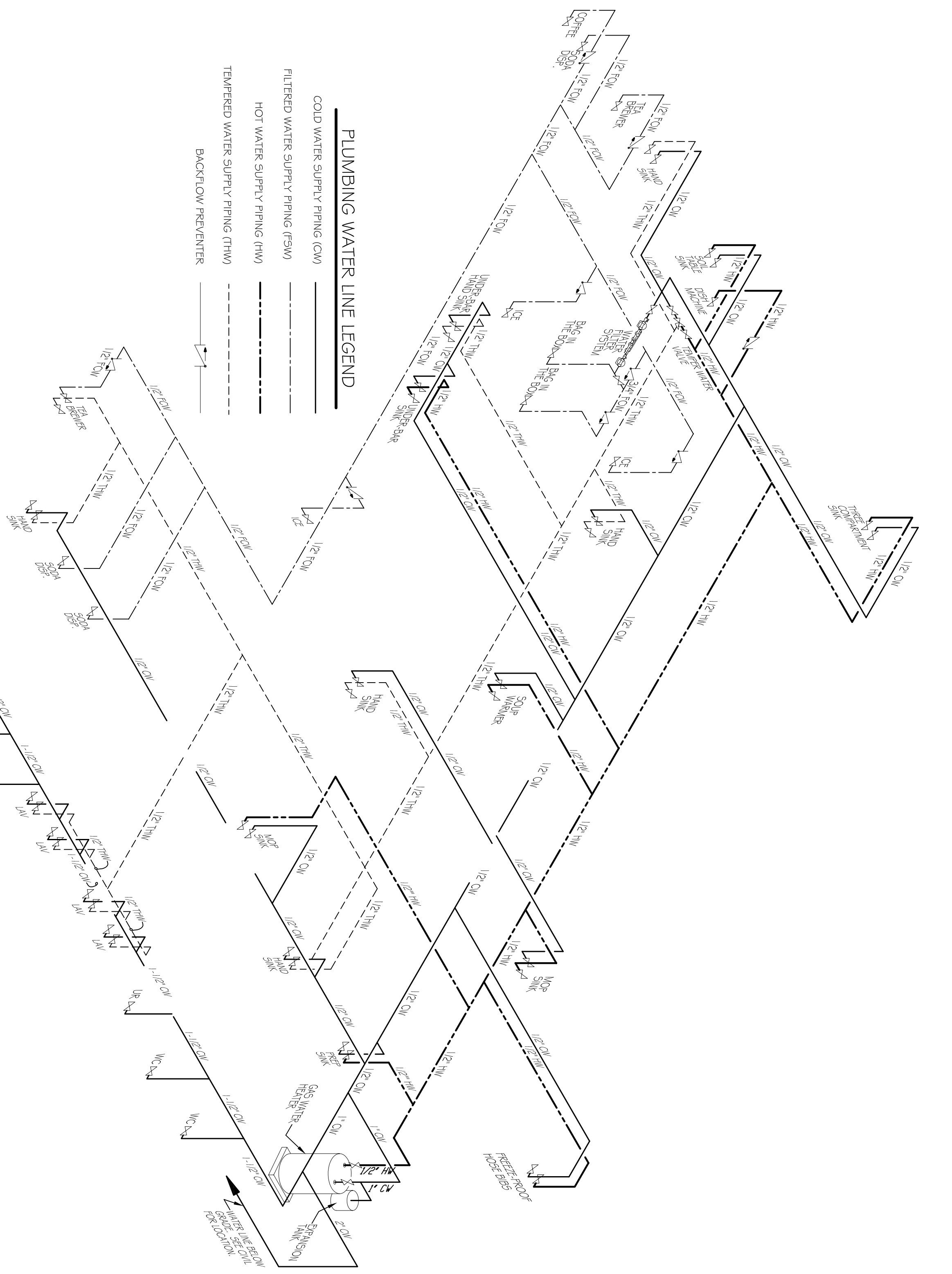
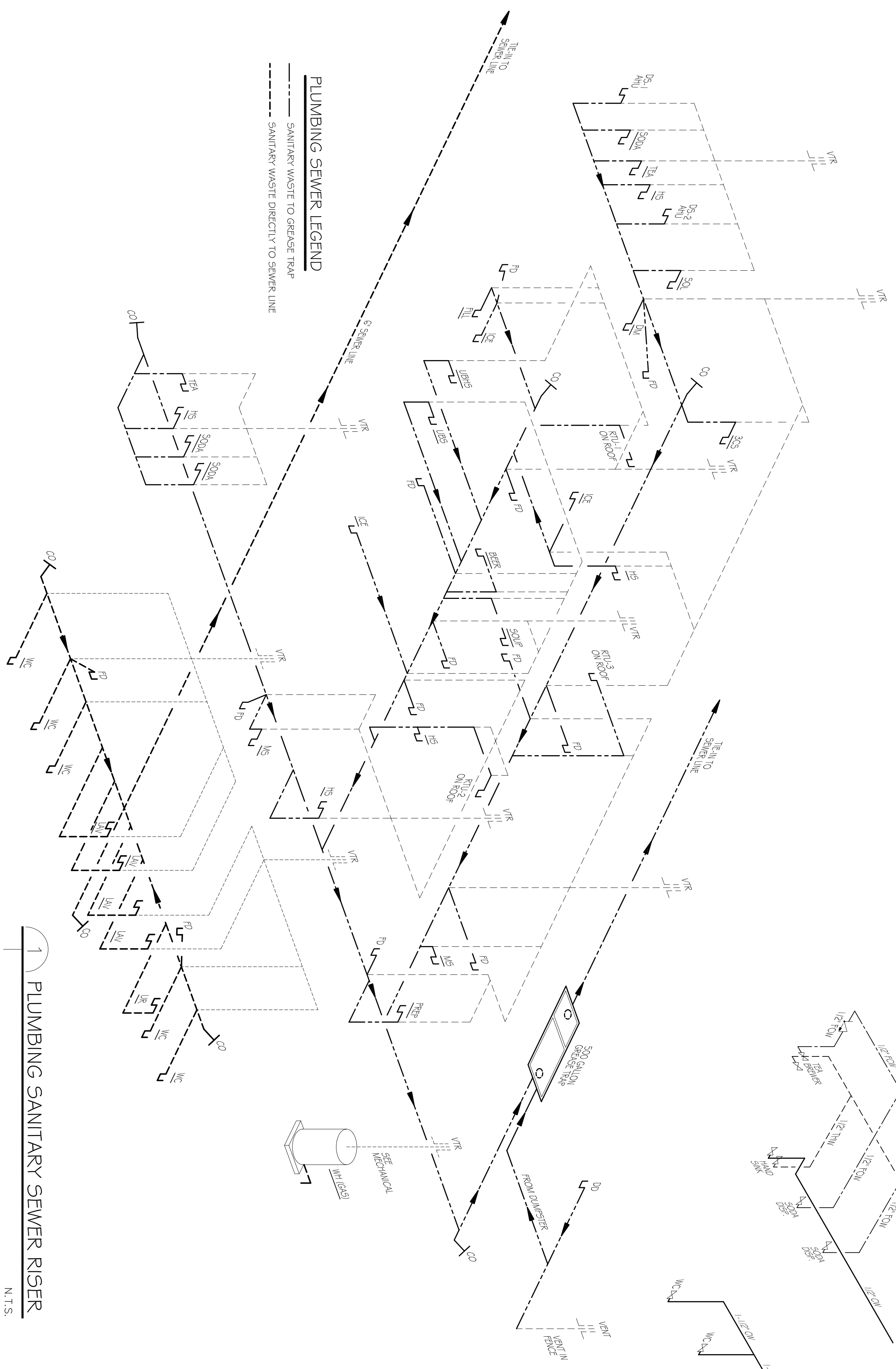


3 PLUMBING GAS SUPPLY RISER
N.T.S.



2 PLUMBING WATER SUPPLY RISER
N.T.S.

GAS EQUIPMENT LEGEND		BTU/H INPUT
WATER HEATER		160,000
RU-1 (ROOFTOP) A/C		200,000
RU-2 (ROOFTOP) A/C		200,000
RU-3 (ROOFTOP) A/C		250,000
IH-1 (INFRARED HEATER)		50,000
IH-1 (INFRARED HEATER)		50,000
CHERRIQUEL KITCHEN EQUIP. K-297		200,000
GRIDDLE KITCHEN EQUIP. K-247		113,000
HOT PLATE KITCHEN EQUIP. K-167		44,000
LARGE FRIGER KITCHEN EQUIP. K-177		110,000
SMALL FRIGER KITCHEN EQUIP. K-187		110,000
SMALL FRIGER KITCHEN EQUIP. K-197		110,000
TOTAL USAGE		1,367,000 TOTAL
APPROX. DISTANCE FROM REGULATOR TO FARTHEST TAKE OFF: 156'		
GAS TYPE: NATURAL GAS		



1 PLUMBING SANITARY SEWER RISER
N.T.S.

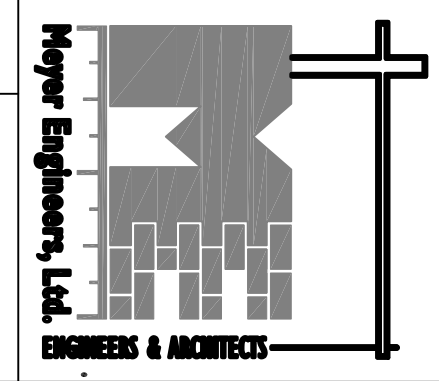
In joint venture with:

DAMMON
ENGINEERING, INC.

Architects & Engineers

Chief Engineer: Brian Welch, PE
334 Old Spanish Trail
Sibley, LA 70458

www.dammonengineering.com
dammon@dammonengineering.com
F: 985.641.1590



Meyer Engineers, Ltd.
4937 Hearst Street . Suite 1B . Metairie, Louisiana 70001
2031 Claiborne Street . Mandeville, Louisiana 70448
phone.504.885.9892 . fax.504.887.5056
website.www.meyer-e-l.com

Project no.	20-1348/
drawn	JTL
checked	CKD
date	08.21.2014
revised	