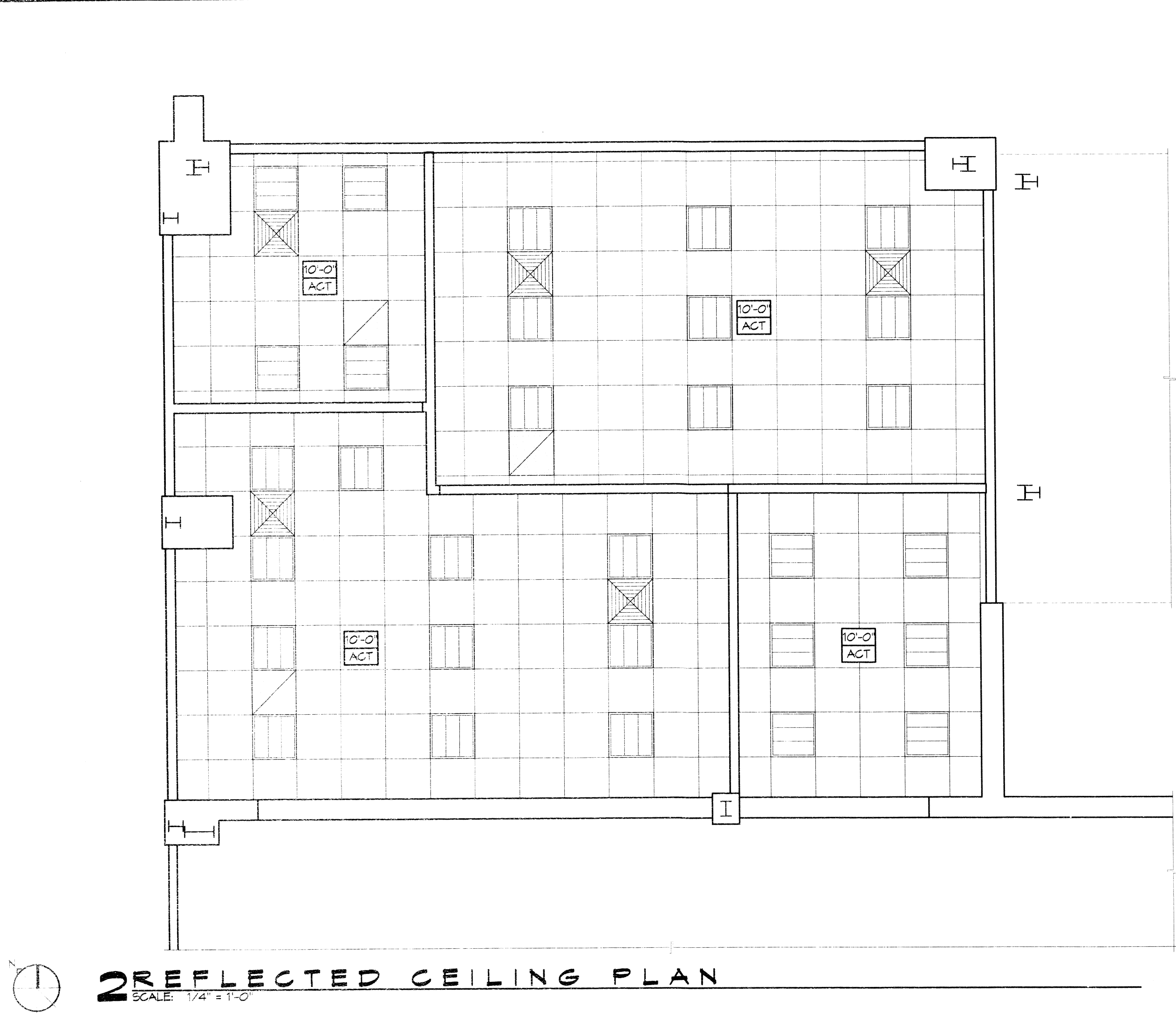


**3 PARTITIONS**  
SCALE: 1/2" = 1'-0"



**2 REFLECTED CEILING PLAN**  
SCALE: 1/4" = 1'-0"

### RCP NOTES

- ALL CEILING HEIGHTS INDICATED ON PLANS ARE FROM TOP OF FINISH FLOOR TO UNDERSIDE OF FINISH CEILING UNLESS OTHERWISE NOTED.
- REFER TO PARTITION TYPES FOR WALL/PARTITION ASSEMBLY AND INFORMATION.
- SEE SHEET E101 FOR LIGHT FIXTURE TYPES. SEE MECHANICAL DRAWINGS FOR DIFFUSER AND GRILLE TYPES.
- PROVIDE ADEQUATE CLEARANCES FOR DUCTS AND RELATED APPURTENANT ITEMS NECESSARY TO MAINTAIN THE SPECIFIED CEILING HEIGHT ABOVE THE FINISH FLOOR FOR LIGHT FIXTURES.
- PROVIDE HANGER AND SAFETY WIRE FOR LIGHT FIXTURES, SPEAKERS, AND AIR SUPPLY/RETURN DIFFUSERS (AS REQUIRED).
- ALL ELEMENTS SUSPENDED FROM THE DECK THAT OVERHANGS A PEDESTRIAN WAY SHALL BE A MINIMUM OF 60 INCHES ABOVE THE WALKING SURFACE AS MEASURED FROM THE BOTTOM OF THE OBSTRUCTION.

### RCP LEGEND

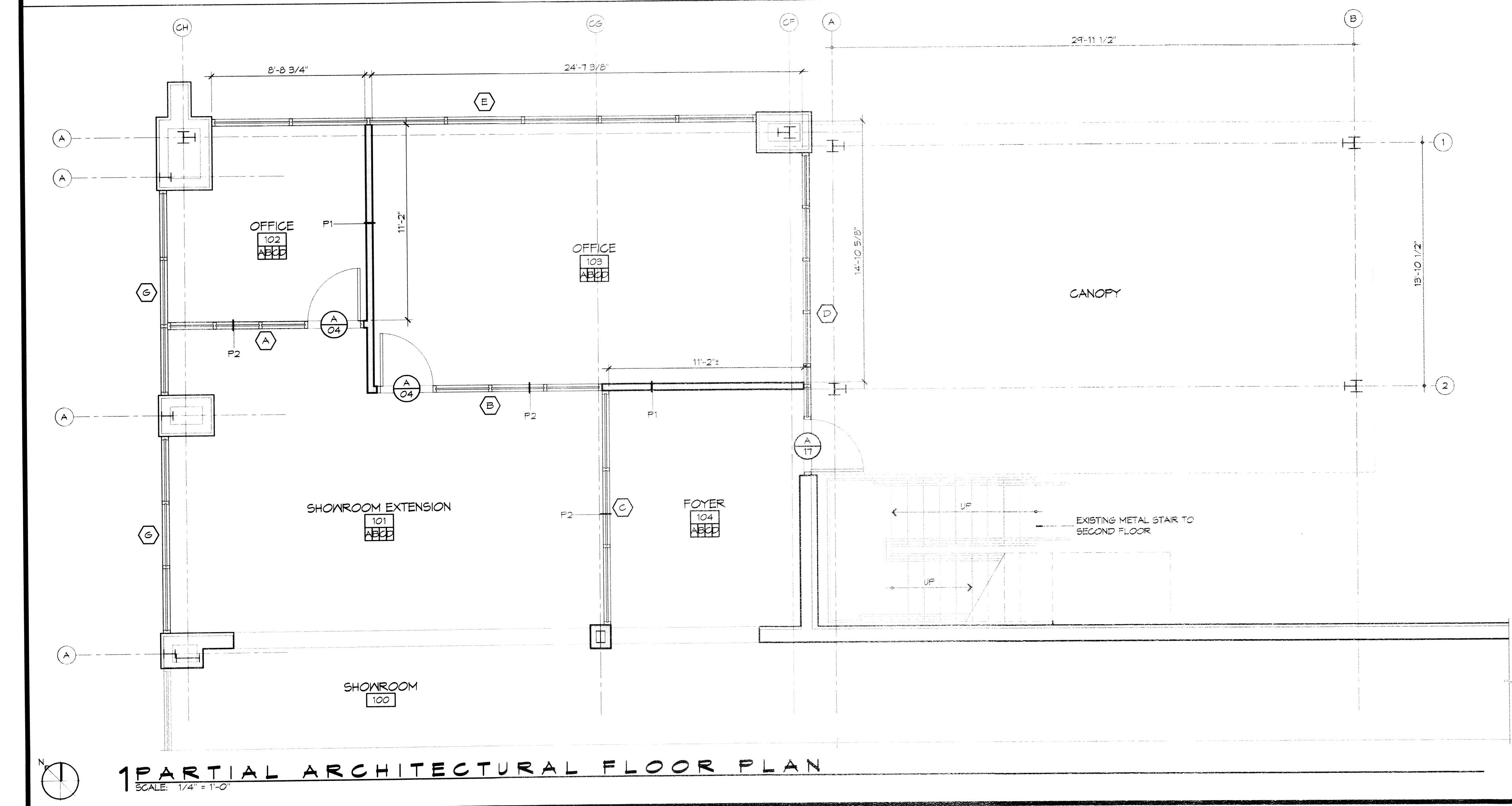
SYMBOL	DESCRIPTION
[Symbol]	2X2' RECESSED FLUORESCENT LIGHT FIXTURE
[Symbol]	1X4' SUSPENDED HIGH BAY LIGHT FIXTURES
[Symbol]	SURFACE MOUNTED FLUORESCENT LIGHT FIXTURE STRIP
[Symbol]	CEILING FAN
[Symbol]	PENDANT LIGHT FIXTURE
[Symbol]	RECESSED LIGHT FIXTURE
[Symbol]	SURFACE MOUNTED LIGHT FIXTURE
[Symbol]	EXHAUST FAN
[Symbol]	HVAC SUPPLY AIR DIFFUSER
[Symbol]	HVAC RETURN AIR GRILL
[Symbol]	GYPSUM BOARD CEILING
[Symbol]	2X2' SUSPENDED ACOUSTICAL CEILING TILE SYSTEM
[Symbol]	METAL SOFFIT PANEL

**DAMMON ENGINEERING, INC.**  
Architects & Engineers

Chief Architect: Kevin J. Kinchen, NCARB  
Chief Engineer: Brian Misch, PE  
554 Old Spanish Trail  
PH: 951-647-5311

#	DESCRIPTION	DATE

SEAL:



**1 PARTIAL ARCHITECTURAL FLOOR PLAN**  
SCALE: 1/4" = 1'-0"

### DOOR SCHEDULE

LOCKSET WITHOUT A DEADBOLT	LOCKSETS WITH A DEADBOLT
01 CLASSROOM LOCKSET	10 APARTMENT LOCKSET
02 CLASSROOM SECURITY LOCKSET	11 CLASSROOM SECURITY LOCKSET
03 INSTITUTIONAL LOCKSET	12 DORMITORY LOCKSET
04 OFFICE LOCKSET	13 STOREROOM LOCKSET
05 PASSAGE LOCKSET	14 STORE DOOR LOCKSET
06 PRIVACY LOCKSET	15 DEADBOLT ONLY
07 PUBLIC RESTROOM LOCKSET	16 DEADBOLT (KEYED OUTSIDE)
08 STOREROOM LOCKSET	17 DEADBOLT (KEYED ONE SIDE)
09 HOTEL/MOTEL	18 DEADLOCK (KEYED OUTSIDE - THUMBTURN INSIDE)

**NOTE:**  
SEE STOREFRONT ELEVATIONS FOR DOOR FRAME TYPES.

### FINISH SCHEDULE

A. 12"x12" CERAMIC TILE FLOOR
B. 4" RUBBER BASE
C. 5/8" GYPSUM WALL BOARD - PAINTED
D. 24"x24" SUSPENDED ACOUSTICAL CEILING TILE

### LEGEND

[Symbol]	EXISTING PARTITION TO REMAIN
[Symbol]	NEW PARTITION
[Symbol]	ITEMS TO BE DEMOLISHED

### GENERAL FLOOR PLAN NOTES

- INSULATION AND INSULATION ASSEMBLIES SHALL MEET THE REQUIREMENTS OF IBC 2012 SECTION 719.
  - A. CONCEALED INSULATION SHALL HAVE A FLAME SPREAD OF 0-25 AND SMOKE DEVELOPED INDEX OF 0-450, EXCEPT THAT IN COMBUSTIBLE (WOOD FRAME) CONSTRUCTION.
  - B. FACING SHALL COMPLY WITH IBC 2012.
- ALL MATERIALS SHALL BE NEW AND UL LISTED.
- NO WORK SHALL BE CONCEALED UNTIL APPROVED BY LOCAL INSPECTORS.
- CONSTRUCTION SHALL COMPLY WITH ALL PARISH, STATE, AND LOCAL CODES.
- CONTRACTOR TO GUARANTEE WORK FOR ONE YEAR FROM DATE OF SUBSTANTIAL COMPLETION.
- CONTRACTOR SHALL FURNISH WATER AND POWER FROM EXISTING SOURCES.
- EXTERIOR CAULKING SHALL BE THIKOL CAULK.
- PAINT SHALL BE SHERWIN WILLIAMS OR EQUIVALENT AND APPROPRIATE FOR THE SUBSTRATE TO WHICH IT IS APPLIED AS RECOMMENDED BY PAINT MANUFACTURER. ALL WORK TO RECEIVE THREE COATS (ONE PRIMER COAT, TWO FINISH COATS) UNLESS OTHERWISE RECOMMENDED BY PAINT MANUFACTURER. COLORS TO BE SELECTED BY OWNER.
- PROVIDE CLEANUP ON A REGULAR BASIS. NO TRASH SHALL BE STORED INSIDE BUILDING PREMISES.
- ALL BATT INSULATION SHALL HAVE A CLASS "A" (0-25) FLAME SPREAD IN COMPLIANCE WITH IBC 2012.
- USE 2X6 WOOD STUDS, OR TWO 2X4 WOOD STAGGERED STUDS WITH 2X6 SILL PLATE AT ALL WALLS WHERE 4" PIPE IS INDICATED. SEE PLUMBING RISER DIAGRAM FOR PIPE SIZE.
- PROVIDE GALVANIZED METAL PAN WITH DRAIN AT ALL WATER HEATERS.
- ALL FLOORING SHALL MEET OR EXCEED ADA GUIDELINES REQUIREMENTS FOR SLIP RESISTANCE.
- INTERIOR LOCKS ON DOORS IN MEANS OF EGRESS SHALL NOT REQUIRE THE USE OF A KEY, SPECIAL KNOWLEDGE, OR SPECIAL DEVICE TO OPEN IN THE DIRECTION OF EGRESS. ALL DOORS SHALL HAVE LEVER TYPE HANDLES.
- INTERIOR WALLS AND CEILING SHALL HAVE A FLAME SPREAD OF 0-200 AND A SMOKE DEVELOPMENT RATING OF 0-450.
- ALL WORK SHALL COMPLY WITH THE LATEST EDITION OF ALL LOCAL, STATE, AND NATIONAL CODES COVERING THE TYPE OF WORK BEING PERFORMED.
- PROVIDE PORTABLE FIRE EXTINGUISHERS IN ACCORDANCE WITH NFPA 101. SEE APPENDIX "E" OF NFPA 101 FOR DISTRIBUTION OF EXTINGUISHERS.
- ALL FIRE WALLS SHALL EXTEND TIGHT TO ROOF DECK AND BE SEALED WITH AN APPROVED FIRE CAULK.
- ALL ELECTRICAL, MECHANICAL, AND PLUMBING MATERIALS PENETRATING FIRE WALLS SHALL BE FIRE CAULKED. (PENETRATIONS THROUGH RATED CONSTRUCTION SHALL BE SEALED WITH A MATERIAL CAPABLE OF PREVENTING THE PASSAGE OF FLAMES AND HOT GASES WHEN TESTED IN ACCORDANCE WITH ASTM-E814.)
- SERVICE COUNTERS SHALL HAVE AN ACCESSIBLE WRITING SURFACE IN COMPLIANCE WITH ADAAGS ACCESSIBILITY GUIDELINES 2010, SECTION 902.3.

STATE FIRE MARSHAL  
467778  
AS PER REVIEW LETTER  
BY: GHASSAN HATTA

RENOVATIONS TO:

**HONDA OF SLIDELL**

510 EAST HORIZON BEACH ROAD  
SLIDELL, LA 70461  
JOB No: MA02-2015  
DATE: 2/23/15

SHEET TITLE:  
ARCHITECTURAL FLOOR PLAN AND REFLECTED CEILING PLAN

DRAWING NUMBER:  
**A101**

SHEET No: 4 of 6