

**LIFE-SAFETY INFORMATION**

**APPLICABLE CODES**  
 NFPA 101 LIFE-SAFETY CODE 2012  
 OCCUPANCY TYPE(S) AND CHAPTER(S)  
 ASSEMBLY (CHAPTER 12), INDUSTRIAL (CHAPTER 40), BUSINESS (CHAPTER 38)  
 MULTIPLE, MIXED, OR SEPARATE OCCUPANCY (REFERENCE CHAPTER 6)  
 N/A

**OCCUPANT LOAD FACTOR** (REFERENCE TABLE 7.3.1.2)

LEVEL	ASSEMBLY (BANQUET HALL)	INDUSTRIAL (KITCHEN)	BUSINESS	TOTAL OCCUPANT LOAD - LEVEL
LEVEL 1	3,214 SF NET 1 SF/OCCUPANT NET 460 OCCUPANTS	317 SF NET 2 OCCUPANTS	1,975 SF 100 SF/OCCUPANT 21 OCCUPANTS	483 OCCUPANTS
LEVEL 2	2,382 SF NET 1 SF/OCCUPANT NET 341 OCCUPANTS	441 SF NET 1 SF/OCCUPANT NET 64 OCCUPANTS	317 SF NET 2 OCCUPANTS	407 OCCUPANTS
TOTAL OCCUPANT LOAD 890 OCCUPANTS				

*exceeds 300 persons*

**CONSTRUCTION TYPE(S)** (REFERENCE CHAPTERS, TABLE A.8.2.1.2 AND COMMENTARY TABLE B.1 IN HANDBOOK)  
 III(200)

**MINIMUM EXIT SEPARATION DISTANCE FOR REMOTELY LOCATED EXITS**  
 (REFERENCE SECTION 7.5; SPECIFY 1/2 OR 1/3 DIAGONAL DISTANCE OF AREA SERVED)  
 1/3 DIAGONAL = 34'-2"

**MAXIMUM DEAD-END CORRIDORS** (REFERENCE OCCUPANCY CHAPTER AND TABLE A.7.6)  
 20'

**MAXIMUM COMMON PATH OF TRAVEL DISTANCE** (REFERENCE OCCUPANCY CHAPTER AND TABLE A.7.6)  
 75'

**MAXIMUM TRAVEL DISTANCE TO EXITS** (REFERENCE OCCUPANCY CHAPTER AND TABLE A.7.6)  
 250'

**EXTINGUISHMENT REQUIREMENTS** FULLY SPRINKLED  
**DETECTION, ALARM, AND COMMUNICATION SYSTEMS** THIS BUILDING SHALL HAVE A FULL FIRE ALARM  
**ALLOWABLE HEIGHT AND BUILDING AREA** PER IBC EQUIVALENT CONSTRUCTION TYPE

**RECEPTION HALL RENOVATION**

**BEV INCORPORATED**

111 COUSIN STREET  
 SLIDELL, LA 70458

**LIFE-SAFETY LEGEND**

SYMBOL	DESCRIPTION
↖	EXITS
45	DOOR FIRE RATINGS (MINUTES)
36	DOOR WIDTH/EGRESS CAPACITY
⊙	EXIT LIGHT
FE	FIRE EXTINGUISHER AND CABINET
FE	FIRE EXTINGUISHER W/ WALL MTD BRACKET
—	COMMON PATH OF TRAVEL
.....	TRAVEL DISTANCE
●	DECISION POINT
---	SMOKE PARTITION
---	ONE-HOUR FIRE RATED PARTITION
---	TWO-HOUR FIRE RATED PARTITION
---	TWO-HOUR FIRE/SMOKE PARTITION
---	FOUR-HOUR RATED PARTITION

**BUILDING CODE INFORMATION**

**APPLICABLE CODES**  
 IBC 2012  
 ASSEMBLY GROUP A-2 (BANQUET HALL) (IBC 2012 SECTION 503)  
 BUSINESS GROUP B (IBC 2012 SECTION 504)

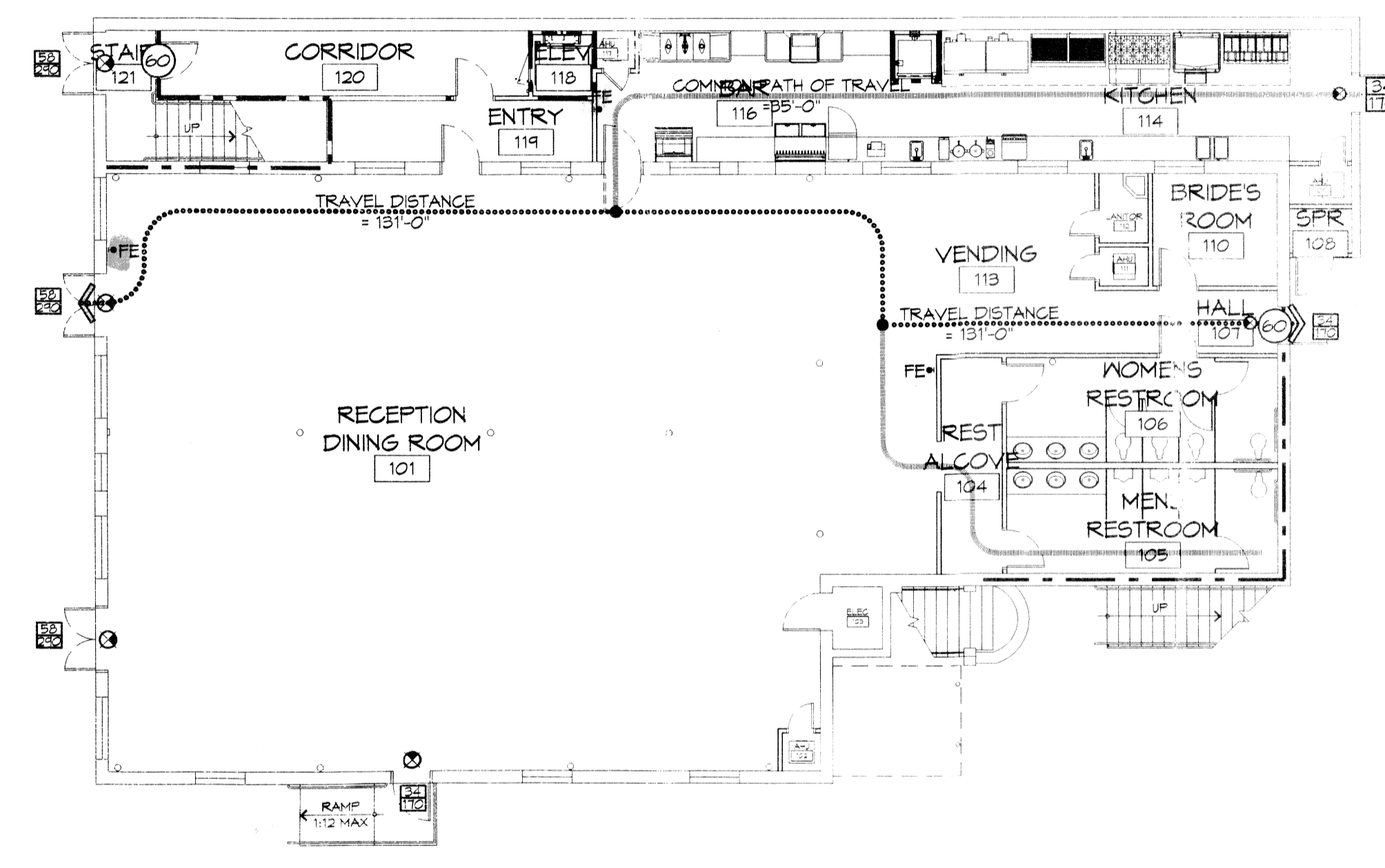
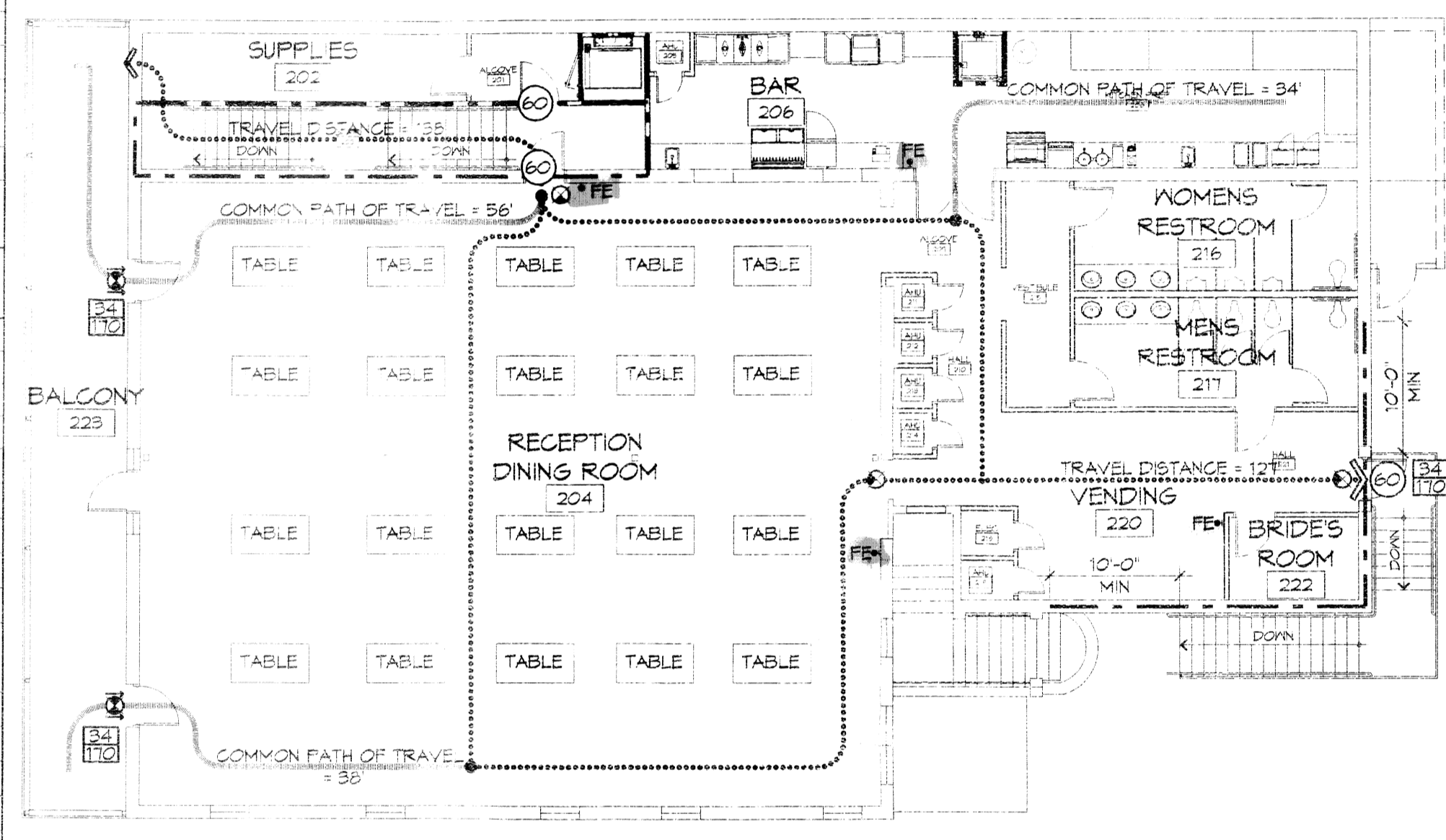
**OCCUPANT LOAD CALCULATIONS** (TABLE 1004.1.2)

LEVEL	ASSEMBLY (GROUP A-2)	ASSEMBLY (GROUP A-2) - KITCHEN	BUSINESS (GROUP B)	TOTAL OCCUPANT LOAD - LEVEL
LEVEL 1	3,214 SF NET 1 SF/OCCUPANT NET 460 OCCUPANTS	317 SF NET 2 OCCUPANTS	1,975 SF 100 SF/OCCUPANT 20 OCCUPANTS	482 OCCUPANTS
LEVEL 2	2,382 SF NET 1 SF/OCCUPANT NET 341 OCCUPANTS	441 SF NET 1 SF/OCCUPANT NET 64 OCCUPANTS	317 SF NET 2 OCCUPANTS	407 OCCUPANTS
TOTAL OCCUPANT LOAD 889 OCCUPANTS				

*exceeds 300 persons*

**CONSTRUCTION TYPE(S)** (TABLE 503)  
 III(B) (SECTION 503)

**ALLOWABLE HEIGHT AND BUILDING AREA LIMITED BY TYPE OF CONSTRUCTION**  
 MAXIMUM HEIGHT IN STORIES (SECTION 503 & 504, TABLE 503) 3  
 MAXIMUM AREA IN SQUARE FEET (SECTION 503, 506 & 507, TABLE 503) 14,000



2 LIFE-SAFETY PLAN - LEVEL 2  
 SCALE: 3/32" = 1'-0"

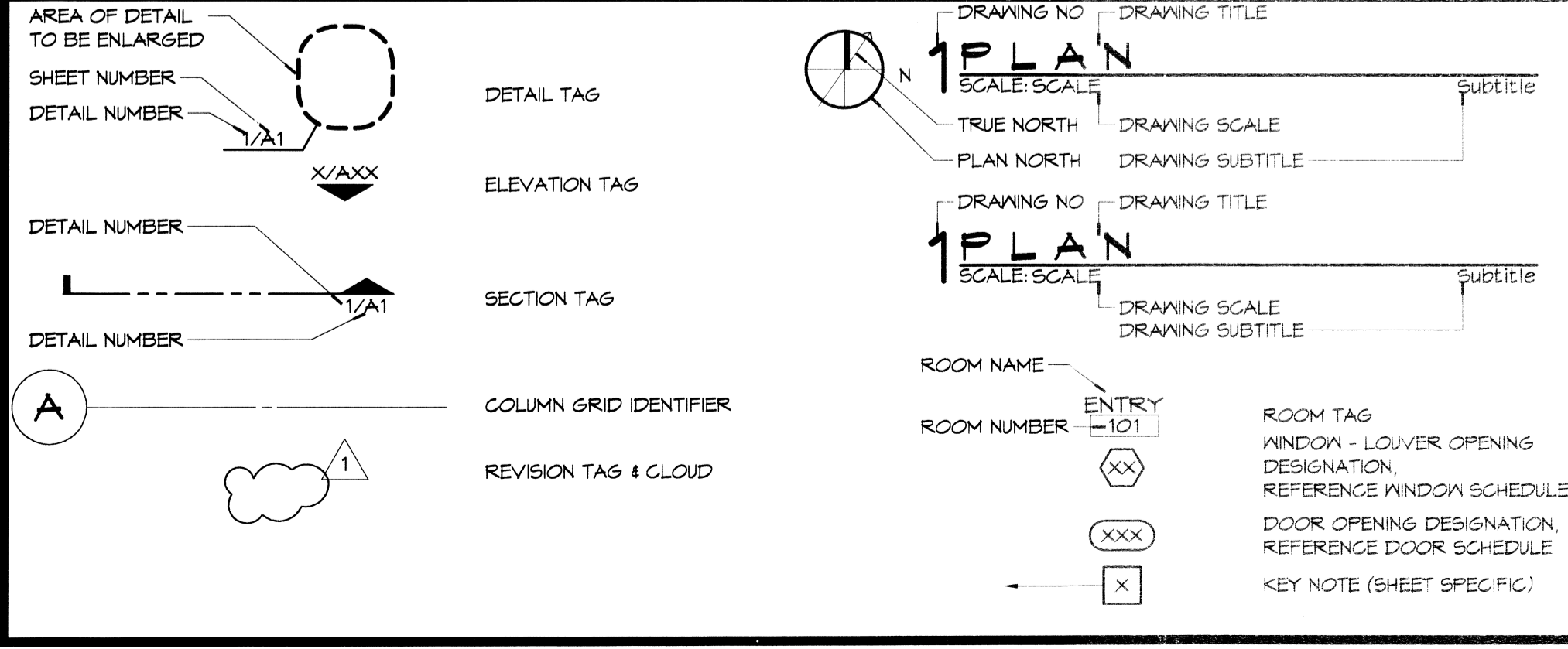
1 LIFE-SAFETY PLAN - LEVEL 1  
 SCALE: 3/32" = 1'-0"

**WIND SPEED DESIGN REQUIREMENTS**

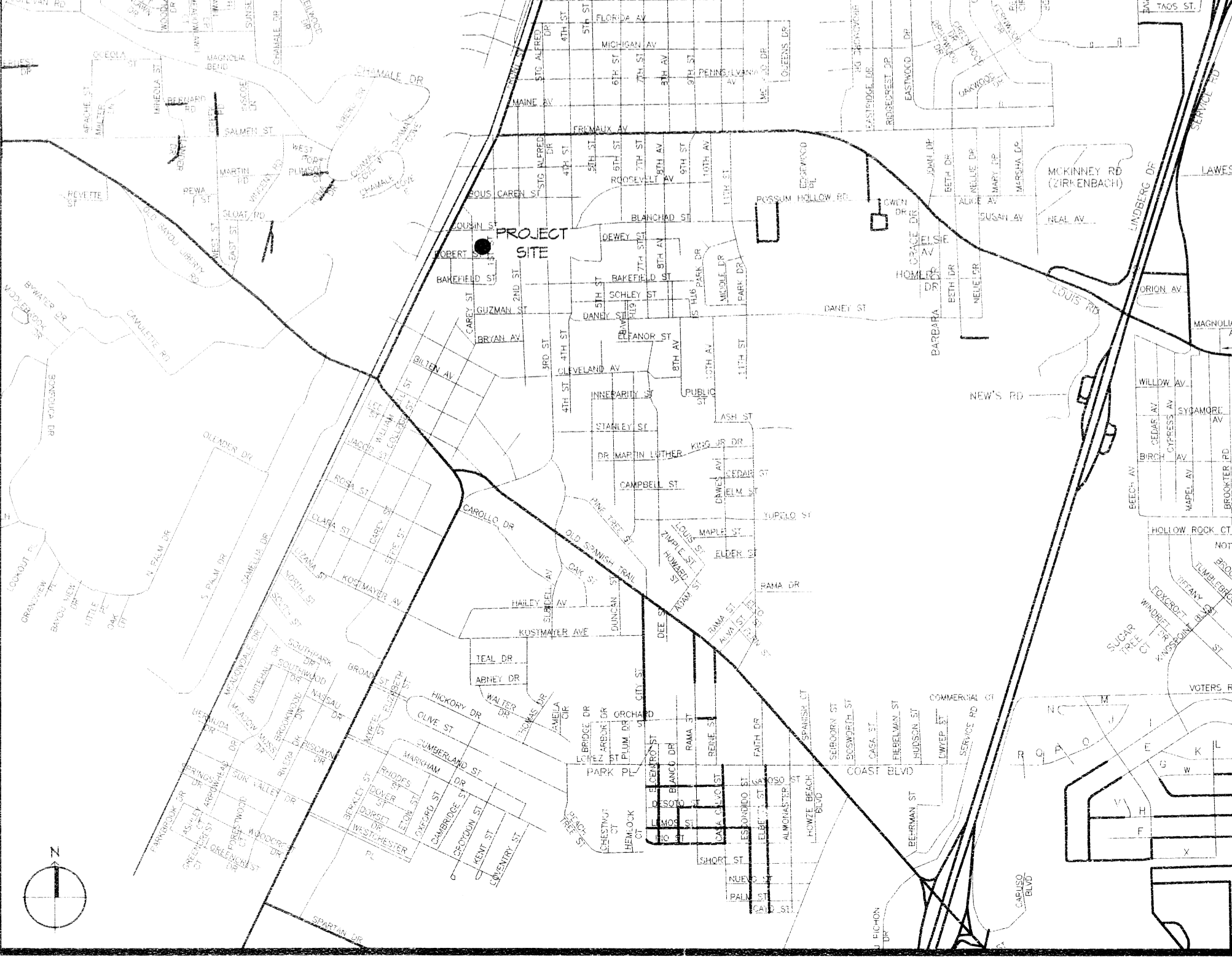
THIS BUILDING SHALL BE DESIGNED WITH IBC SEC 1609 AS A FULLY ENCLOSED BLDG USING THE FOLLOWING INFORMATION:

**WIND DESIGN DATA:**  
 DETERMINATION OF WIND LOADS SHALL BE IN ACCORDANCE WITH IBC SEC 1609.3 (A), (B), OR (C) DEPENDING ON THE RISK CATEGORY  
 BASIC WIND SPEED (3 SECOND GUST) = 132 MPH (IBC FIG 1609C)  
 RISK FACTOR: CATEGORY I BLDG SURFACE ROUGHNESS = C  
 TOPOGRAPHIC FACTOR = 1 EXPOSURE = C  
 DESIGN WIND PRESSURE (ASCE 7-10 TABLE 26.6-1): 34.7 PSF  
 INTERNAL PRESSURE COEFFICIENT (ASCE 7-10 TABLE 26.11-1): ± 0.18  
 LIVE LOADS (IBC SEC 1607)  
 STORAGE, LIGHT (IBC TABLE 1607.1): 125 PSF  
 ROOF LIVE LOADS (IBC TABLE 1607.1): 20 PSF UNIFORM, 300 LB CONCENTRATED  
 SNOW LOADS (IBC TABLE 1608):  
 GROUND SNOW LOAD (IBC FIG 1608.2): 5 PSF

**GRAPHIC SYMBOLS**



**VICINITY MAP**



**SHEET INDEX**

SHEET #	SHEET TITLE
G1	GENERAL INFORMATION, LIFE-SAFETY PLANS, AND CODE DATA
D1	ADAAG INFORMATION SHEET
D2	DEMOLITION PLAN - LEVEL 1
D3	DEMOLITION PLAN - LEVEL 2
A1	ARCHITECTURAL FLOOR PLAN - LEVEL 1
A2	ARCHITECTURAL FLOOR PLAN - LEVEL 2
A3	SCHEDULES AND NOTES
A4	STAIRS PLAN, SECTIONS, ELEVATIONS, & DETAILS
P1	PLUMBING PLAN - LEVEL 1
P2	PLUMBING PLAN - LEVEL 2
P3	SANITARY RISERS & DETAILS
M1	MECHANICAL PLAN - LEVEL 1
M2	MECHANICAL PLAN - LEVEL 2
M3	MECHANICAL NOTES, SCHEDULES & DETAILS
E1	ELECTRICAL POWER PLAN - LEVEL 1
E2	ELECTRICAL LIGHTING PLAN - LEVEL 2
E3	ELECTRICAL POWER PLAN - LEVEL 1
E4	ELECTRICAL LIGHTING PLAN - LEVEL 2
E5	ELECTRICAL CIRCUIT PANELS & ONE-LINE DIAGRAMS

**GENERAL NOTES**

- ALL MATERIALS AND WORK, INCIDENTAL TO THE CONSTRUCTION OF THIS PROJECT, SHALL CONFORM TO ALL GOVERNING CODES, AND REGULATIONS OF AGENCIES IN AUTHORITY.
- CONTRACTOR SHALL PROVIDE ALL PUBLIC PROTECTIONS NECESSARY AS REQUIRED BY LAW.
- THE DRAWINGS, SPECIFICATIONS AND ANY SUBSEQUENTLY ISSUED ADDENDA, AMENDMENTS OR SUCH CHANGE ORDERS APPROVED BY THE OWNER AND THE CONTRACTOR ARE PART OF THESE CONTRACT DOCUMENTS.
- DO NOT SCALE DRAWINGS. CONSULT WITH THE ARCHITECT REGARDING ANY ITEMS IN THE CONTRACT DOCUMENTS THAT REQUIRE CLARIFICATION.
- TRASH SHALL BE REMOVED FROM THE SITE NOT LESS THAN TWICE MONTHLY.
- THE GENERAL CONTRACTOR SHALL VERIFY EXISTING CONDITIONS PRIOR TO COMMENCING WORK AND REPORT ANY AND ALL DISCREPANCIES TO THE ARCHITECT.
- CONTRACTOR VEHICLES AND EQUIPMENT NECESSARY FOR CONSTRUCTION MAY BE PARKED ON THE SITE. OTHER VEHICLES PARKED ON THE SITE REQUIRE THE OWNER'S PERMISSION.
- NAMING A CERTAIN BRAND, MAKE OR MANUFACTURER IS TO DESIGNATE THE GENERAL STYLE, TYPE, CHARACTER AND QUALITY STANDARD OF THE PRODUCT DESIRED. SUBSTITUTION REQUESTS MUST BE SUBMITTED PRIOR TO BIDDING.
- ALL MATERIALS/EQUIPMENT SHALL BE INSTALLED PER MANUFACTURER'S RECOMMENDATIONS. WORK NOT CONSISTENT WITH MANUFACTURER'S RECOMMENDATIONS WILL BE REJECTED BY OWNER/ARCHITECT.

**PROJECT STATISTICS**

SQUARE FOOTAGE	
LEVEL 1	5,456 SF
LEVEL 2	5,347 SF
TOTAL ENCLOSED SPACE	10,803 SF

**PROJECT LOCATION:**  
 211 COUSIN STREET  
 SLIDELL, LA 70458  
 OWNER:  
 REED INGRAM

465406  
 REVIEWED FOR  
 STATE FIRE MARSHAL  
 AS PER REV. W. LETTER  
 BY: WILLIAM D. JONES, ARCHITECT, CH.

**DAMMON ENGINEERING, INC.**  
 Architects & Engineers  
 www.dammonengineering.com  
 info@dammon.com  
 Chief Engineer: Brian W. Mitchell, PE  
 211 Cousin Street, Slidell, LA 70458  
 Phone: 985.649.9832  
 Fax: 985.641.9950

DATE	REVISIONS

SEAL:

RECEPTION HALL RENOVATION FOR:  
**BEV, INCORPORATED**  
 211 COUSIN STREET  
 SLIDELL, LOUISIANA 70458  
 JOB NO: 2220 DATE: MARCH 13, 2015  
 DRAWN BY: KSK CHECKED BY: KSK

SHEET TITLE:  
 GENERAL INFORMATION, LIFE-SAFETY PLANS, AND CODE DATA

DRAWING NUMBER:  
**G1**

SHEET No: 1 of 14