

DATE: 03/11/15
 PROJECT: RECEPTION HALL RENOVATION
 DRAWING NO: 465406
 SHEET: MECHANICAL NOTES, SCHEDULES & DETAILS
 SCALE: N.T.S.
 PROJECT LOCATION: 211 COVEN STREET, SUITE 100, SLIDELL, LOUISIANA 70458
 CLIENT: BEV, INCORPORATED
 ARCHITECT: WILLIAM D. JONES, ARCHITECT, CBO
 ENGINEER: DAMMON ENGINEERING, INC.
 PROJECT MANAGER: BRUCE W. MARCH
 PROJECT ENGINEER: KEVIN J. KITCHEN, N.CARB
 PROJECT SUPERVISOR: BRIAN M. MITCHELL, P.E.
 PHONE: 985.441.5952
 FAX: 985.441.5950

DAMMON

ENGINEERING, INC.

Architects & Engineers

www.dammonengineering.com
 info@dammonengineering.com
 Chief Engineer: Brian Mitchell, P.E.
 Chief Architect: Kevin J. Kitchen, N.CARB
 594 Old Spanish Trail
 Slidell, LA 70458

FIRST FLOOR DUCTLESS SYSTEM A/C UNIT SCHEDULE (ZONE-1)

UNIT NAME/TYPE #	TOTAL BTU	CFM	O.A.	HEAT (KW)	ELECTRICAL			COMMENTS
					VOLTAGE	MCA	CKT BRKRS	
DS1-1/DSO-1 DUCTLESS 3 TON (2.84) 34,100 BTU		1137	296		208V,1Ø	23.0	MP1-1,3,15	NOTE: ALL DUCTLESS A/C SYSTEMS TO BE FLUITSU 3GRCLX AUU3GRCLX 4 AOU3GRCLX *DS1* DESIGNATES A DUCTLESS SYSTEM INTERIOR UNIT AND *DSO* DESIGNATES A DUCTLESS SYSTEM OUTSIDE UNIT
DS1-2/DSO-2 DUCTLESS 3 TON (2.84) 34,100 BTU		1137	296		208V,1Ø	23.0	MP1-14,16	
DS1-3/DSO-3 DUCTLESS 3 TON (2.84) 34,100 BTU		1137	296		208V,1Ø	23.0	MP1-17,19	
DS1-4/DSO-4 DUCTLESS 3 TON (2.84) 34,100 BTU		1137	296		208V,1Ø	23.0	MP1-18,20	
DS1-5/DSO-5 DUCTLESS 3 TON (2.84) 34,100 BTU		1137	296		208V,1Ø	23.0	MP1-21,23	
DS1-6/DSO-6 DUCTLESS 3 TON (2.84) 34,100 BTU		1137	296		208V,1Ø	23.0	MP1-22,24	

SPLIT SYSTEM A/C UNIT SCHEDULE (BOTH FLOORS)

TOTAL BTU	CFM	O.A.	HEAT (KW)	ELECTRICAL			COMMENTS
				VOLTAGE	MCA	CKT BRKRS	
AC #1 (ZONE 1-FIRST FLOOR) 60,000 BTU (5 TON)				208V,3Ø	21.5	MP1-1,3,5	NOTE: ALL A/C TO BE SPLIT-SYSTEM HVAC TO BE DAIKIN OR EQUAL
AC #2 (ZONE 2-FIRST FLOOR) 60,000 BTU (5 TON)				208V,3Ø	21.5	MP2-1,3,5	
AC #3 (FOR KITCHEN HOOD ONLY-FIRST FLOOR) 60,000 BTU (5 TON)				208V,3Ø	21.5	MP2-2,4,6	
AC #4 (ZONE 3-FIRST FLOOR) 60,000 BTU (5 TON)				208V,3Ø	21.5	MP2-7,9,11	
AC #5 (ZONE 4-SECOND FLOOR) 60,000 BTU (5 TON)				208V,3Ø	21.5	MP2-8,10,12	
AC #6 (ZONE 5-SECOND FLOOR) 60,000 BTU (5 TON)				208V,3Ø	21.5	MP2-13,15,17	
AC #7 (ZONE 5-SECOND FLOOR) 60,000 BTU (5 TON)				208V,3Ø	21.5	MP2-14,16,18	
AC #8 (ZONE 5-SECOND FLOOR) 60,000 BTU (5 TON)				208V,3Ø	21.5	MP1-2,4,6	
AC #9 (ZONE 5-SECOND FLOOR) 60,000 BTU (5 TON)				208V,3Ø	21.5	MP1-7,9,11	
AC #10 (ZONE 6-SECOND FLOOR) 60,000 BTU (5 TON)				208V,3Ø	21.5	MP1-8,10,12	

SPLIT SYSTEM AHU UNIT SCHEDULE (BOTH FLOORS)

TOTAL BTU	CFM	O.A.	HEAT (KW)	ELECTRICAL			COMMENTS
				VOLTAGE	MCA	CKT BRKRS	
60,000 BTU (5 TON) AHU #1 (ZONE 1-FIRST FLOOR)	2,000	296	20	208V,3Ø	54	HP1-1,2,3,4,5,6	NOTE: ALL A/C TO BE SPLIT-SYSTEM HVAC WITH SERVICE DISCONNECT FACTORY INSTALLED. AMANA OR EQUAL
60,000 BTU (5 TON) AHU #2 (ZONE 2-FIRST FLOOR)	2,000	212	20	208V,3Ø	54	HP1-7,8,9,10,11,12	
60,000 BTU (5 TON) AHU #3 (HOOD-1ST FLOOR)	2,000	168	20	208V,3Ø	54	HP1-13,14,15,16,17,18	
60,000 BTU (5 TON) AHU #4 (ZONE 3-1ST FLOOR)	2,000	194	20	208V,3Ø	54	KP1-1,2,3,4,5,6	
60,000 BTU (5 TON) AHU #5 (ZONE 4-2ND FLOOR)	2,000	179	20	208V,3Ø	54	KP2-1,2,3,4,5,6	
60,000 BTU (5 TON) AHU #6 (ZONE 5-2ND FLOOR)	2,000	123	20	208V,3Ø	54	KP2-7,8,9,10,11,12	
60,000 BTU (5 TON) AHU #7 (ZONE 5-2ND FLOOR)	2,000	123	20	208V,3Ø	54	KP2-13,14,15,16,17,18	
60,000 BTU (5 TON) AHU #8 (ZONE 5-2ND FLOOR)	2,000	123	20	208V,3Ø	54	HP2-1,2,3,4,5,6	
60,000 BTU (5 TON) AHU #9 (ZONE 5-2ND FLOOR)	2,000	123	20	208V,3Ø	54	HP2-7,8,9,10,11,12	
60,000 BTU (5 TON) AHU #10 (ZONE 6-2ND FLOOR)	2,000	204	20	208V,3Ø	54	HP2-13,14,15,16,17,18	

FAN SCHEDULE

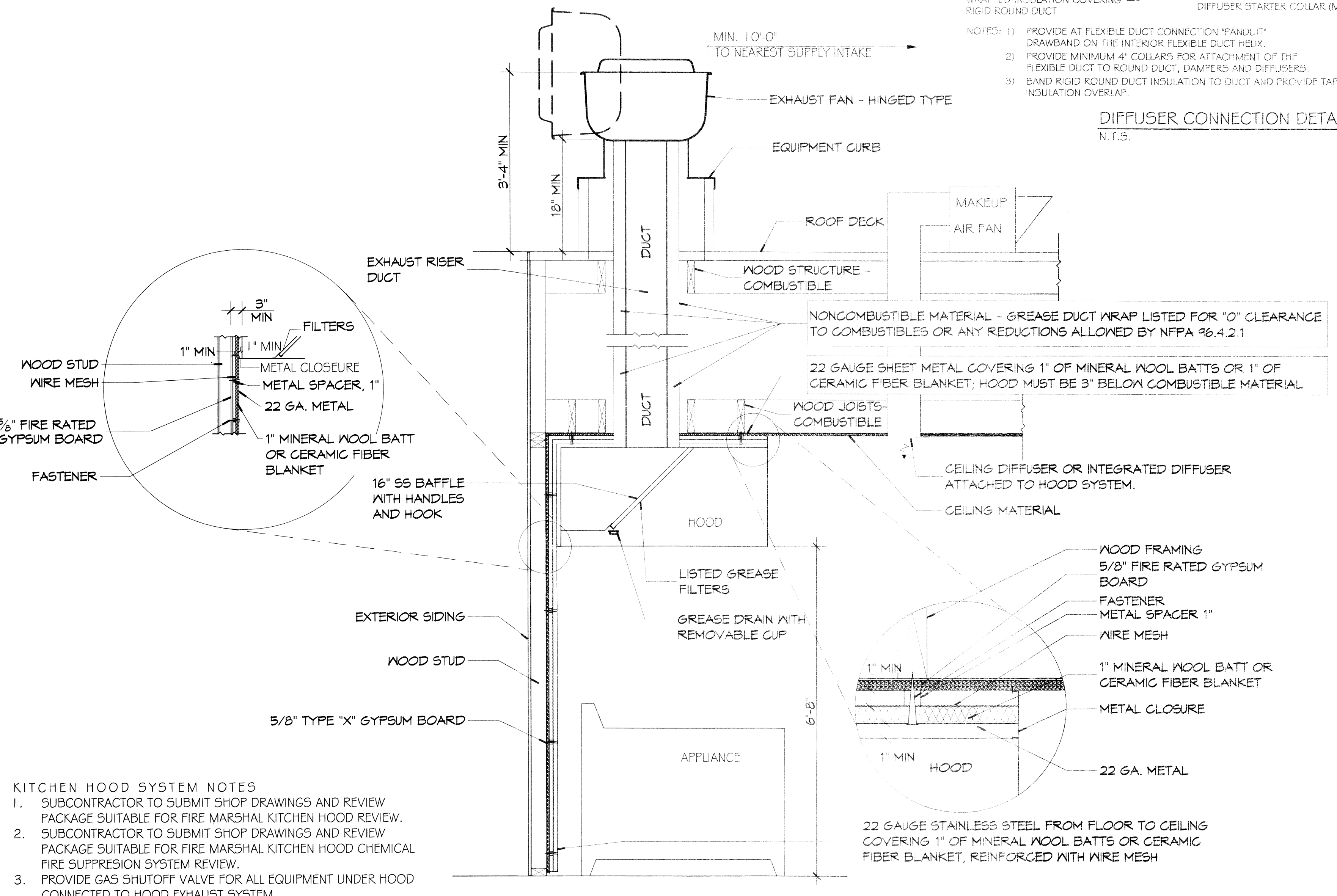
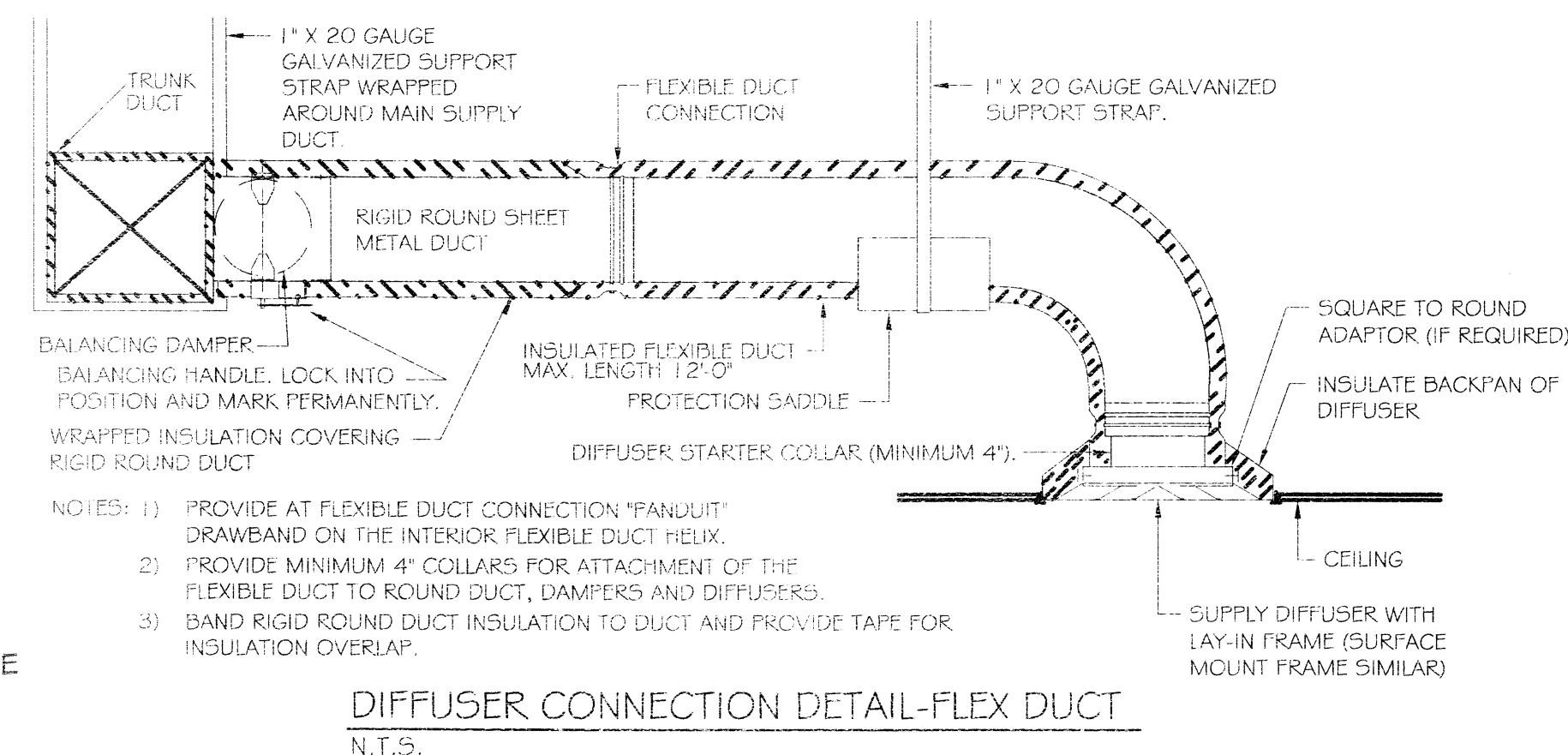
TYPE	LOCATION	CFM	VOLTAGE	TYPE	MANUFACTURER
SF-1	REAR EXTERIOR WALL-FIRST FLOOR (FOR KITCHEN HOOD)	5400	120	HOOD	ACCUREX
EF-1	REAR EXTERIOR WALL-FIRST FLOOR (FOR KITCHEN HOOD)	3650	120	HOOD	ACCUREX
EF-2	REAR EXTERIOR WALL-FIRST FLOOR (FOR KITCHEN HOOD)	3650	120	HOOD	ACCUREX
EF-3	JANITORS CLOSET-FIRST FLOOR	75	120	VENT	BROAN OR EQUAL
EF-4	WOMENS TOILET-FIRST FLOOR	300	120	VENT	BROAN OR EQUAL
EF-5	MENS TOILET-FIRST FLOOR	300	120	VENT	BROAN OR EQUAL
EF-6	MENS TOILET-SECOND FLOOR	300	120	VENT	BROAN OR EQUAL
EF-7	WOMENS TOILET-SECOND FLOOR	300	120	VENT	BROAN OR EQUAL

AIR BALANCE SCHEDULE

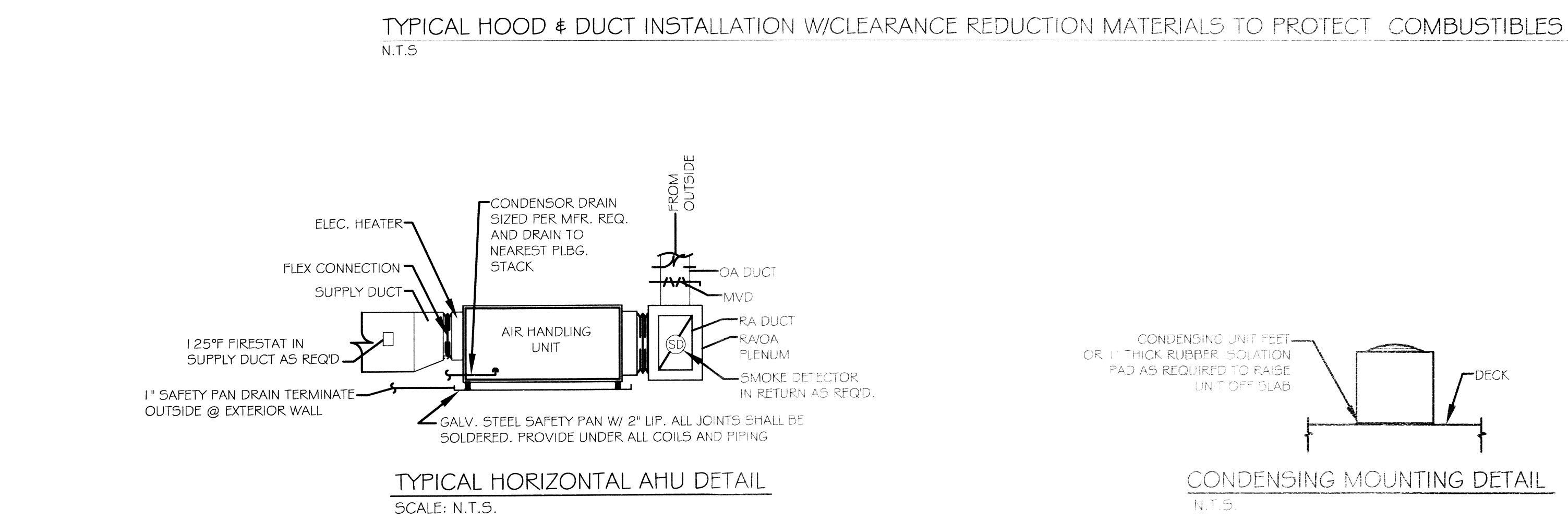
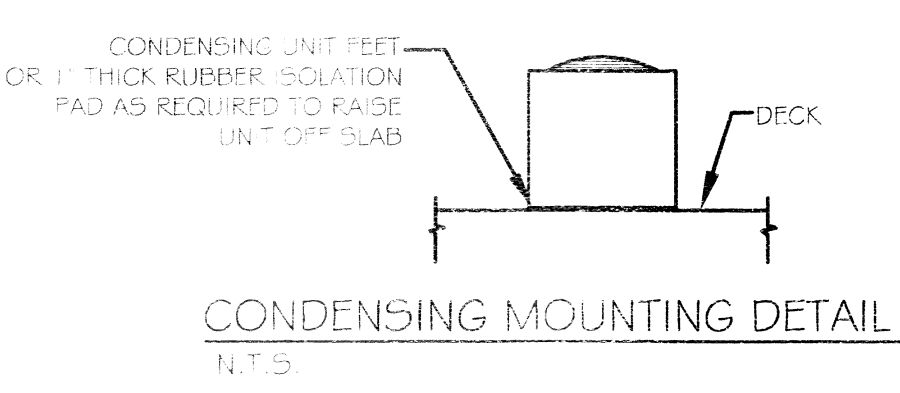
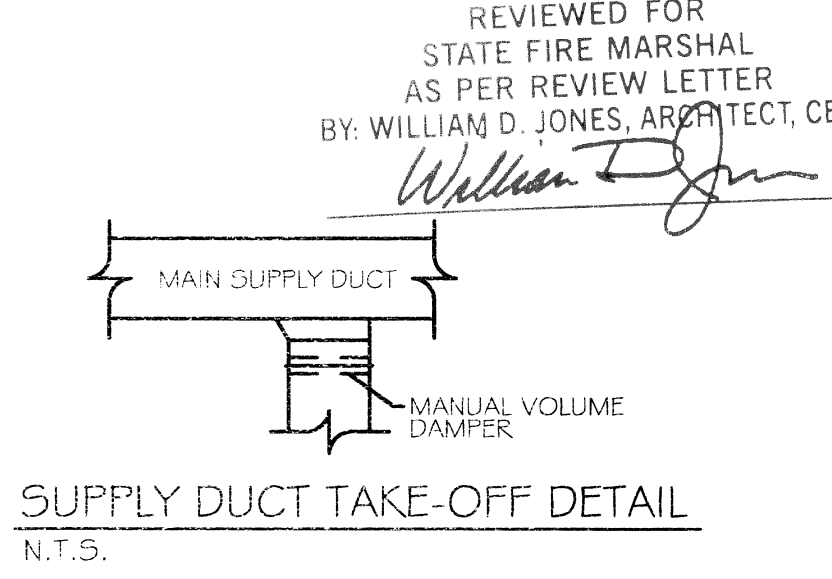
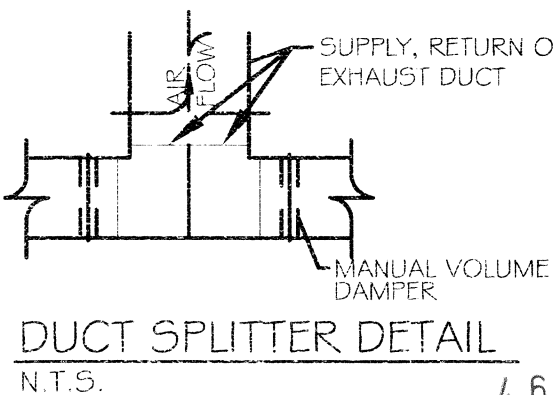
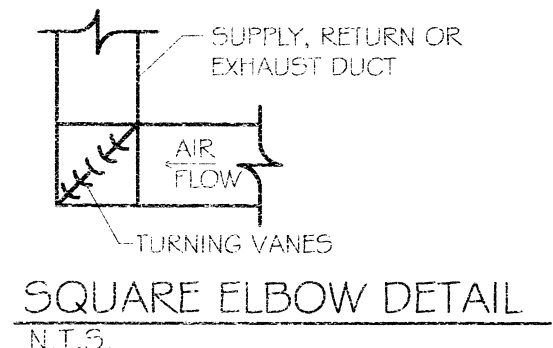
	AHU-1	AHU-2	AHU-3	AHU-4	AHU-5	AHU-6,7,8,9	AHU-10	DS1	SF-1	EF-1,2	EF-3	EF-4,5,6,7
OUTSIDE AIR FLOW (CFM)	296	212	168	194	179	123	204	296	5,400			
RETURN AIR FLOW (CFM)	1,704	1,796	1,832	1,806	1,806	1,806	1,806	841				
SUPPLY AIR FLOW (CFM)	2,000	2,000	2,000	2,000	2,000	2,000	2,000	1,137				
EXHAUST AIR FLOW (CFM)										3,650	75	300
BUILDING PRESSURE (CFM)	296	212	168	194	179	123	204	296	5,400	-75	-300	
QUANTITIES	1	1	1	1	1	4	1	6	1	2	1	4
TOTAL PRESSURIZATIONS	296	212	168	194	179	492	204	1,776	5,400	-7700	-75	-1200

RESULTING BUILDING PRESSURIZATION (CFM) -222

- ### HVAC NOTES
- CONCEALED DUCTWORK TO BE UL-181, CLASS 1, FIBERGLASS DUCTBOARD. DUCTS SHALL BE SIZED TO: MAIN DUCTS TO 1000 CFM & SECONDARY DUCTS TO 800 CFM. TO BE INSTALLED PER SMACNA STANDARDS.
 - EXPOSED DUCTWORK TO BE GALVANIZED SHEET METAL PER SMACNA STANDARDS. LINE WITH NEOPRENE COATED 1.0" 1.5 POUNDS PER CUBIC FOOT DUCT INSULATION.
 - ROUND FLEXIBLE DUCT TO BE UL-181, CLASS 1, AIR DUCT MATERIALS.
 - DUCT SIZES SHOWN ARE CLEAR INSIDE DIMENSIONS.
 - IN ALL SYSTEMS OVER 2000 CFM AND LESS THAN 15,000 CFM, SMOKE DETECTORS SHALL BE INSTALLED IN ACCORDANCE WITH NFPA 72E IN THE RETURN DUCT DOWNSTREAM OF THE AIR HANDLING UNIT AND ALL FILTERS TO AUTOMATICALLY STOP THE FAN.
 - PROVIDE U.L. LISTED 125°F FIRESTAT IN RETURN AIR OF EACH SYSTEM UNDER 2000 CFM TO SHUT DOWN THE FAN IN THE EVENT OF FIRE.
 - PROVIDE U.L. RATED FIRE DAMPERS WHERE REQUIRED AT ALL DUCT PENETRATIONS OF FIRE-RATED ASSEMBLIES AND WHERE REQUIRED BY CODE, INCLUDING OUTSIDE AIR INTAKES.
 - CONDENSATE DRAINS TO BE PVC PIPE RUN TO PLUMBERS P-TRAP WITHIN FIVE FEET OF AIR HANDLING UNITS.
 - ALL AIR HANDLING SYSTEMS TO BE BALANCED TO ASSURE PROPER AIR FLOWS PER PLANS.
 - ALL THERMOSTATS TO BE AUTOMATIC CHANGEOVER WITH HEAT SWITCH.
 - RESTROOM EXHAUST FAN TO BE BROAN OR EQUAL. FAN SHALL BE CONTROLLED BY A SWITCH ON THE WALL IN THE SAME LOCATION AS LIGHT SWITCH(S). PROVIDE BACK DRAFT DAMPER.
 - PROVIDE AND INSTALL WATER PROOF GRILLE VENT IN PROPER ROOF LOCATION FOR PLUMBING FIXTURE EXHAUST.
 - ALL SUPPLY AIR VENTS SHALL BE EQUIPPED WITH AIR CONTROL DAMPERS.
 - LOCATE OUTDOOR UNITS AS SHOWN ON ARCH. DWGS.
 - REFRIGERANT LINES SHALL BE SIZED BY UNIT MANUFACTURER AND INSTALLED ACCORDING TO MANUFACTURERS INSTRUCTIONS.
 - FRESH AIR SHALL BE SUPPLIED TO EACH AIR HANDLER THROUGH EXTERIOR WALL DUCT SUPPLIED WITH A CONTROL DAMPER.
 - INSTALL FIRE DAMPER WHERE S.A. & R.A. DUCTS PENETRATE 1 HOUR RATED CEILING.
 - ALL ELECTRICAL, MECHANICAL, AND PLUMBING PENETRATING FIRE WALLS SHALL BE FIRE CAULKED. (PENETRATIONS THROUGH RATED CONSTRUCTION SHALL BE SEALED WITH A MATERIAL CAPABLE OF PREVENTING THE PASSAGE OF FLAMES AND HOT GASES WHEN TESTED IN ACCORDANCE WITH ASTM E-814).
 - ALL MECHANICAL SYMBOLS ARE DRAWN DIAGRAMMATICALLY. CONTRACTOR TO VERIFY WITH OWNER LOCATIONS OF VENTS, DAMPERS, REGISTERS, ETC.
 - REFER TO STRUCTURAL DRAWINGS TO COORDINATE LOCATION(S) & MOUNTING OF MECHANICAL EQUIPMENT.
 - FLEXIBLE DUCTWORK LENGTH NOT TO EXCEED 10'-0".
 - REFER TO REFLECTED CEILING PLAN FOR FINAL GRILLE AND DIFFUSER LOCATIONS AND COORDINATE AS REQUIRED.
 - FINAL LOCATION OF TEMPERATURE CONTROLS TO BE COORDINATED WITH OWNER AT JOB SITE.
 - PROVIDE AND INSTALL SMOKE DETECTORS AS APPROVED BY LOCAL AHS. PLACE NEAR R/A AND S/A OPENINGS OF AHU AND PROVIDE, WITH ACCESS PANEL, WIRING BY ELECTRICAL CONTRACTOR.
 - FRESH AIR INTAKES ARE REQUIRED TO HAVE MOTORIZED OR GRAVITY DAMPERS TO SHUT OFF WHEN SYSTEM IS NOT RUNNING.



- ### KITCHEN HOOD SYSTEM NOTES
- SUBCONTRACTOR TO SUBMIT SHOP DRAWINGS AND REVIEW PACKAGE SUITABLE FOR FIRE MARSHAL KITCHEN HOOD REVIEW.
 - SUBCONTRACTOR TO SUBMIT SHOP DRAWINGS AND REVIEW PACKAGE SUITABLE FOR FIRE MARSHAL KITCHEN HOOD CHEMICAL FIRE SUPPRESSION SYSTEM REVIEW.
 - PROVIDE GAS SHUTOFF VALVE FOR ALL EQUIPMENT UNDER HOOD CONNECTED TO HOOD EXHAUST SYSTEM.
 - PROVIDE SHUNT TRIP BREAKERS FOR ALL EQUIPMENT UNDER HOOD CONNECTED TO HOOD EXHAUST SYSTEM.



#	DESCRIPTION	DATE

SEAL:

3/11/15

RECEPTION HALL RENOVATION FOR:

BEV, INCORPORATED

211 COVEN STREET
SLIDELL, LOUISIANA 70458

JOB No: 2220 DATE: MARCH 05, 2015
DRAWN BY: KSK CHECKED BY: CAC

SHEET TITLE:
MECHANICAL NOTES,
SCHEDULES & DETAILS

DRAWING NUMBER:

MB

SHEET No: 14 of 13