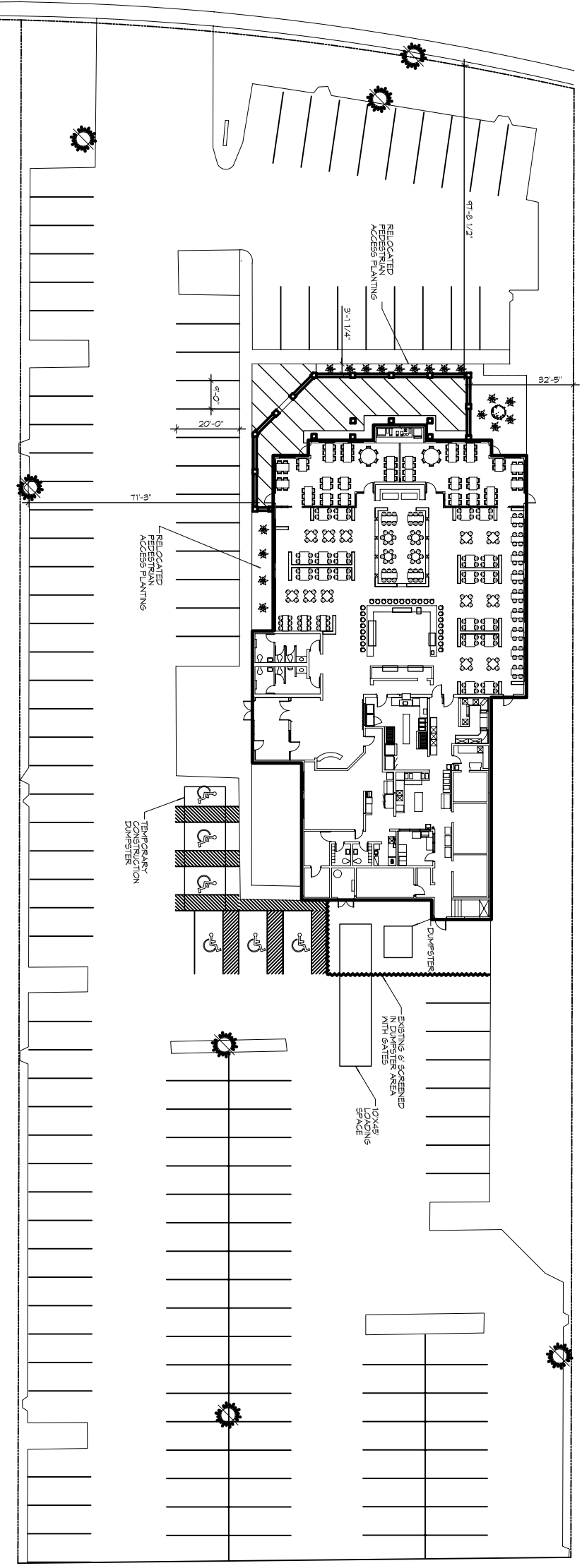


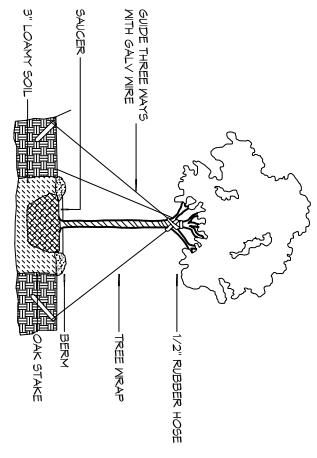


100% OVER ALL SITE PLAN WITH EXISTING PARKING AND NEW PEDESTRIAN ACCESS PLANTING



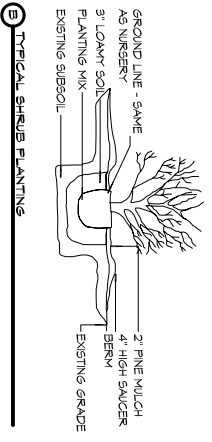
LEGEND

-  LITTLE SEW MASCUDA
SMALL TREES AND ALL TREES OTHER THAN CLASS "X"
TREES AT THE TIME OF PLANTING SHALL HAVE A MINIMUM OF
AT LEAST ONE AND ONE-HALF (1-1/2) INCHES VEASED (6")
6 INCHES ABOVE THE ROOT BALL AND A MINIMUM HEIGHT OF
8-10 FEET AND A MATURE HEIGHT OF 20 FEET AS PER THE
NATIONAL NURSERY ASSOCIATION STANDARDS.
-  AZALEA
SHRUB, A RELATIVELY LOW-GROWING BUSHY PLANT USUALLY
WITH WOODY STEMS. FOR THE PURPOSE OF THIS DEFINITION,
GROUND COVER TREES AND ANNUALS ARE NOT CONSIDERED
SHRUBS. ALL SHRUBS, AT THE TIME OF PLANTING, SHALL HAVE
A MINIMUM HEIGHT OF TWO (2) FEET.



NOTE:
ALWAYS PLANT EQUAL TO OR 1" - 2"
ABOVE GROUND.

1) TYPICAL TREE PLANTING



2) TYPICAL SHRUB PLANTING

BUILDING RENOVATION PROJECT FOR EL PASO RESTAURANT	
1100 ROBERT BOULEVARD SLIDELL, LA 70458	
JOB No: 2242	DATE: 07-04-15
DRAWN BY: CKD	CHECKED BY: BAN

REVISIONS		DATE
#	DESCRIPTION	

DAMMON
ENGINEERING, INC.
Architects & Engineers

Chief Architect: Kevin J. Kinchen, NCARB
 Chief Engineer: Brian Mistich, PE
 554 Old Spanish Trail
 Slidell, LA 70458

www.dammonengineering.com
 info@dammonengineering.com
 PH: 985.649.5832
 F: 985.641.5950

C102

DRAWING NUMBER:

SHEET TITLE:
OVER ALL SITE PLAN
WITH PARKING AND NEW
LANDSCAPING

SHEET NO. 1 OF 24