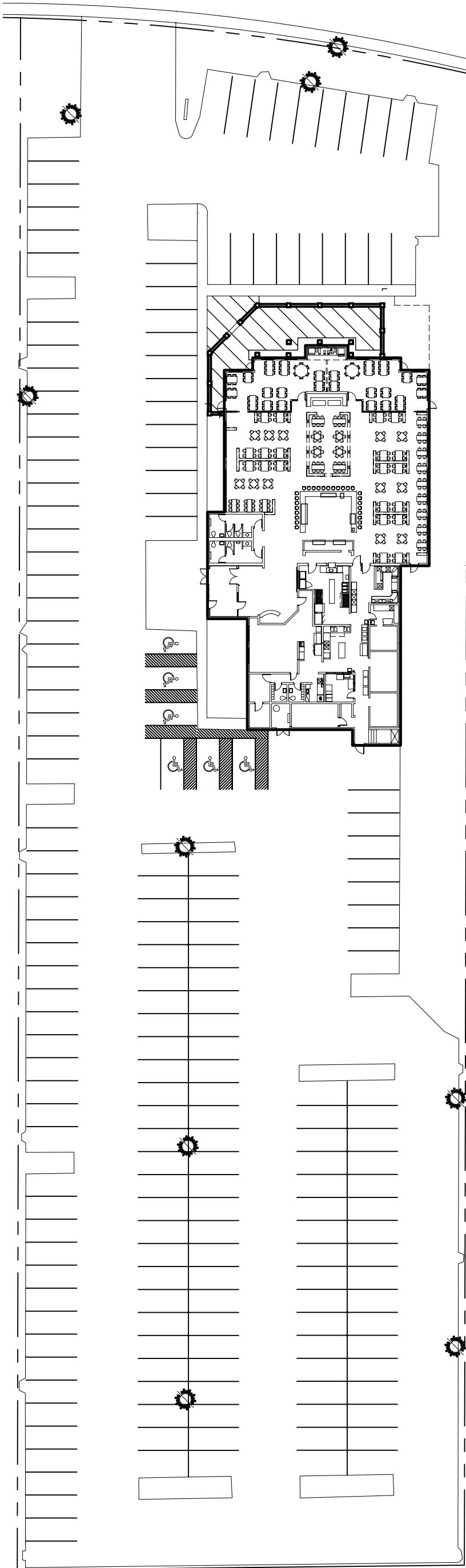


100%
SCALE: 1/8"=1'-0"
OVER ALL SITE PLAN WITH PARKING



BUILDING RENOVATION PROJECT FOR
EL PASO RESTAURANT
1100 ROBERT BOULEVARD
SLIDELL, LA 70458

JOB No: 2242 DATE: 07-04-15
DRAWN BY: CKD CHECKED BY: BAM

We show drawings and specifications, design and arrangements represented thereby and shall remain the property of Dammon Engineering, and no part thereof shall be copied, reproduced, or used in connection with any work or project other than the specific project for which they have been prepared and developed without written consent of Dammon Engineering. We will contract with those drawings or specifications that constitute the contract and shall not be bound by any other drawings or specifications.

| # | DESCRIPTION | REVISIONS | |
|---|-------------|-----------|--|
| | | DATE | |
| | | | |
| | | | |
| | | | |
| | | | |
| | | | |
| | | | |
| | | | |
| | | | |
| | | | |
| | | | |

DAMMON
ENGINEERING, INC.
Architects & Engineers

Chief Architect: Kevin J. Kinchen, NCARB
Chief Engineer: Brian Mistich, PE
554 Old Spanish Trail
Slidell, LA 70458

www.dammonengineering.com
info@dammonengineering.com
PH: 985.649.5832
F: 985.641.5950

DRIVING NUMBER:
C102
SHEET NO: 1 OF 4