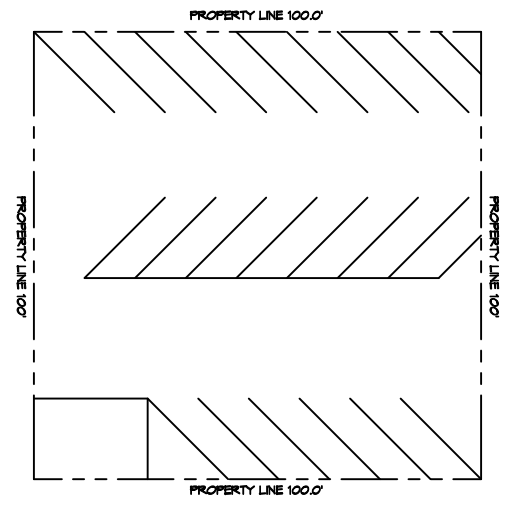
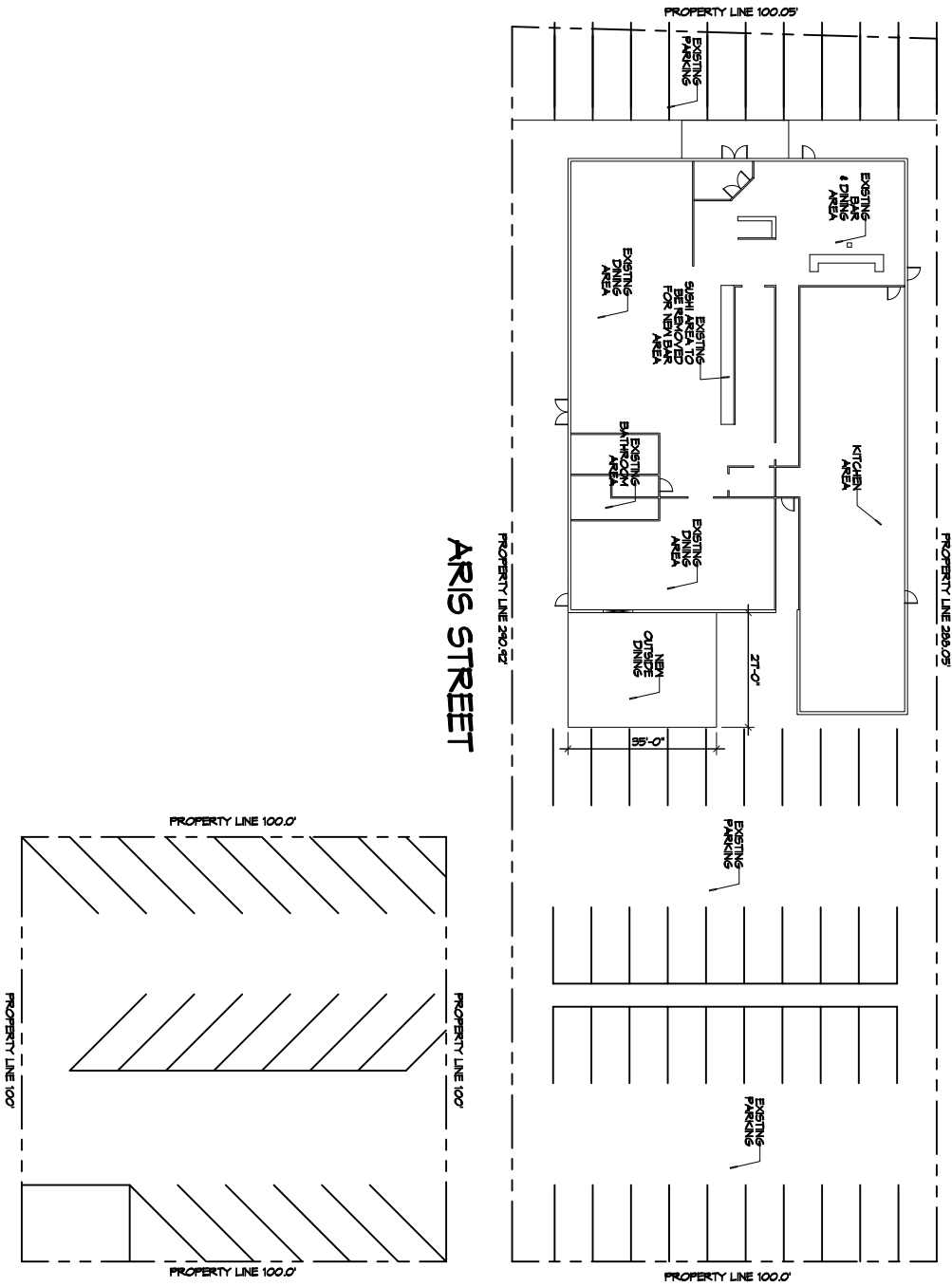




1 OVER ALL SITE PLAN WITH EXISTING PARKING
SCALE: 1/320' = 1" = 0'

ARIS STREET



SHEET TITLE
OVER ALL SITE PLAN WITH PARKING

RESTAURANT
601 VETERANS BLVD.
METAIRIE AVE, LA
JOB No: 2242 DATE: 11-22-15

The above drawings and specifications, designs and a complete representation of the work to be done and shall remain the property of Dammon Engineering, Inc. and no part thereof shall be copied, reproduced, or used in connection with any work or project other than the specific project for which they were prepared without the written consent of Dammon Engineering, Inc.

| REVISIONS | | |
|-----------|-------------|------|
| # | DESCRIPTION | DATE |
| | | |
| | | |
| | | |
| | | |
| | | |
| | | |
| | | |
| | | |
| | | |

DAMMON
ENGINEERING, INC.
Architects & Engineers

Chief Architect: Kevin J. Kinchen, NCARB
Chief Engineer: Brian Mistich, PE
554 Old Spanish Trail

www.dammonengineering.co
info@dammonengineering.co
PH: 985.649.581

C102
SHEET NO. 1 OF 1

DRAWING NUMBER