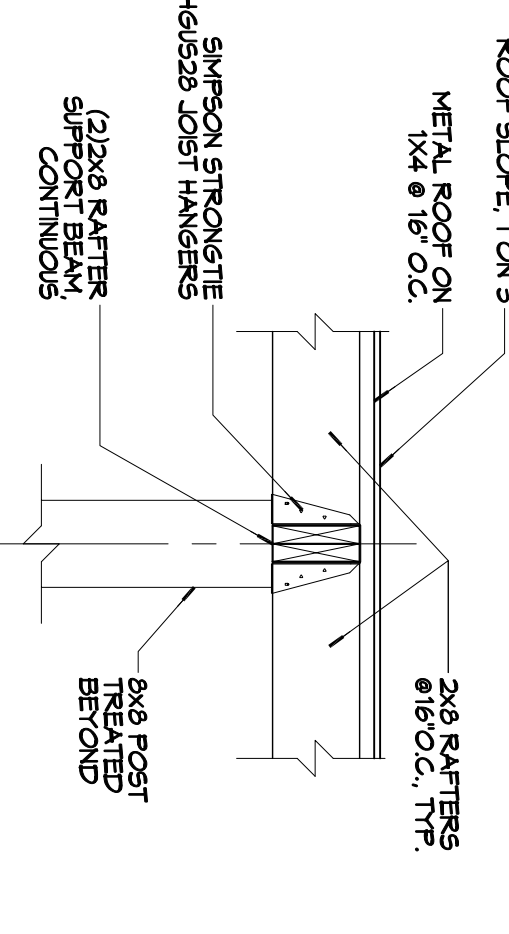
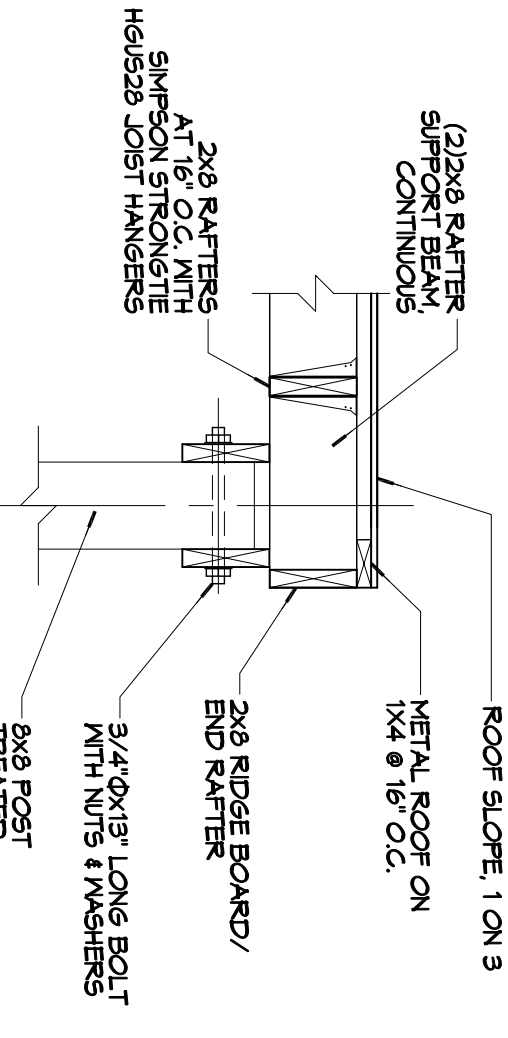


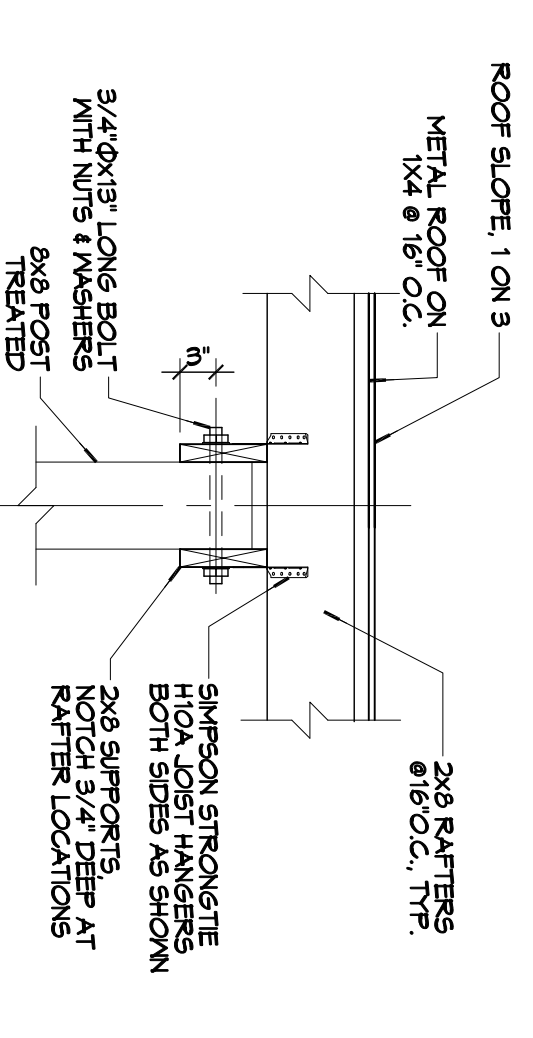
7 PATIO ROOF DETAIL
SCALE: 3/4"=1'-0"



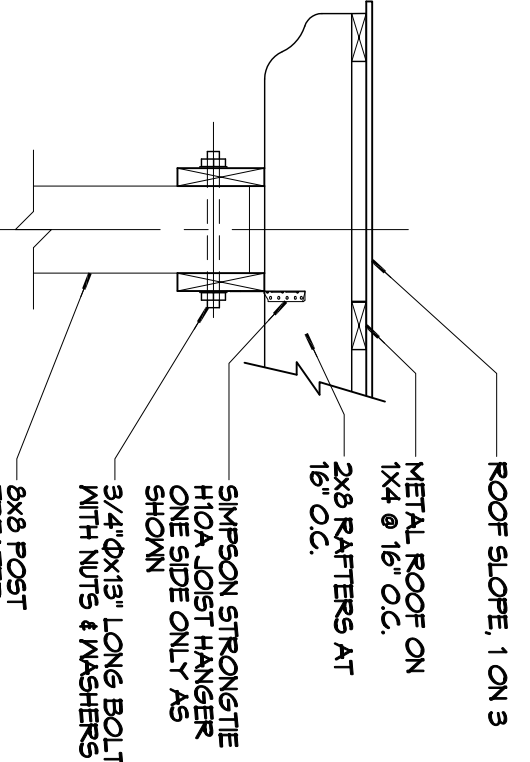
8 PATIO ROOF DETAIL
SCALE: 3/4"=1'-0"



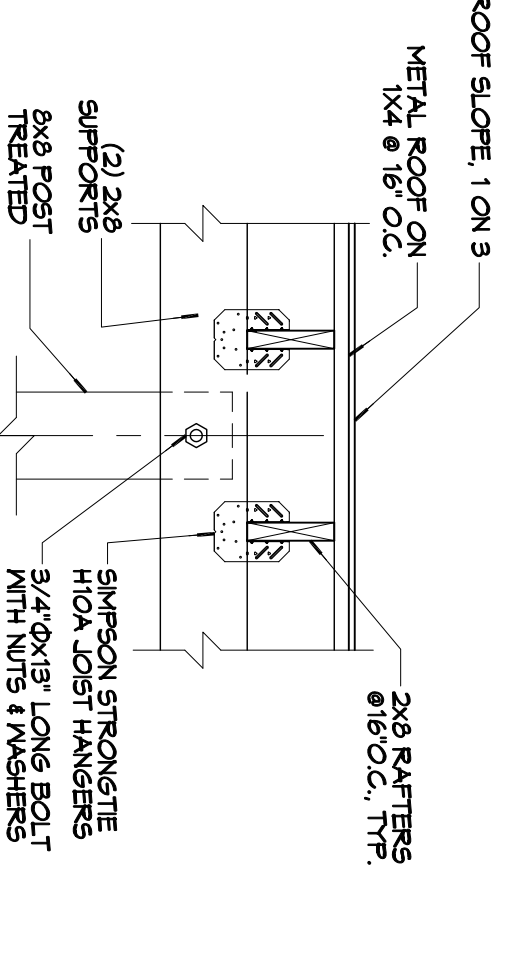
9 PATIO ROOF DETAIL
SCALE: 3/4"=1'-0"



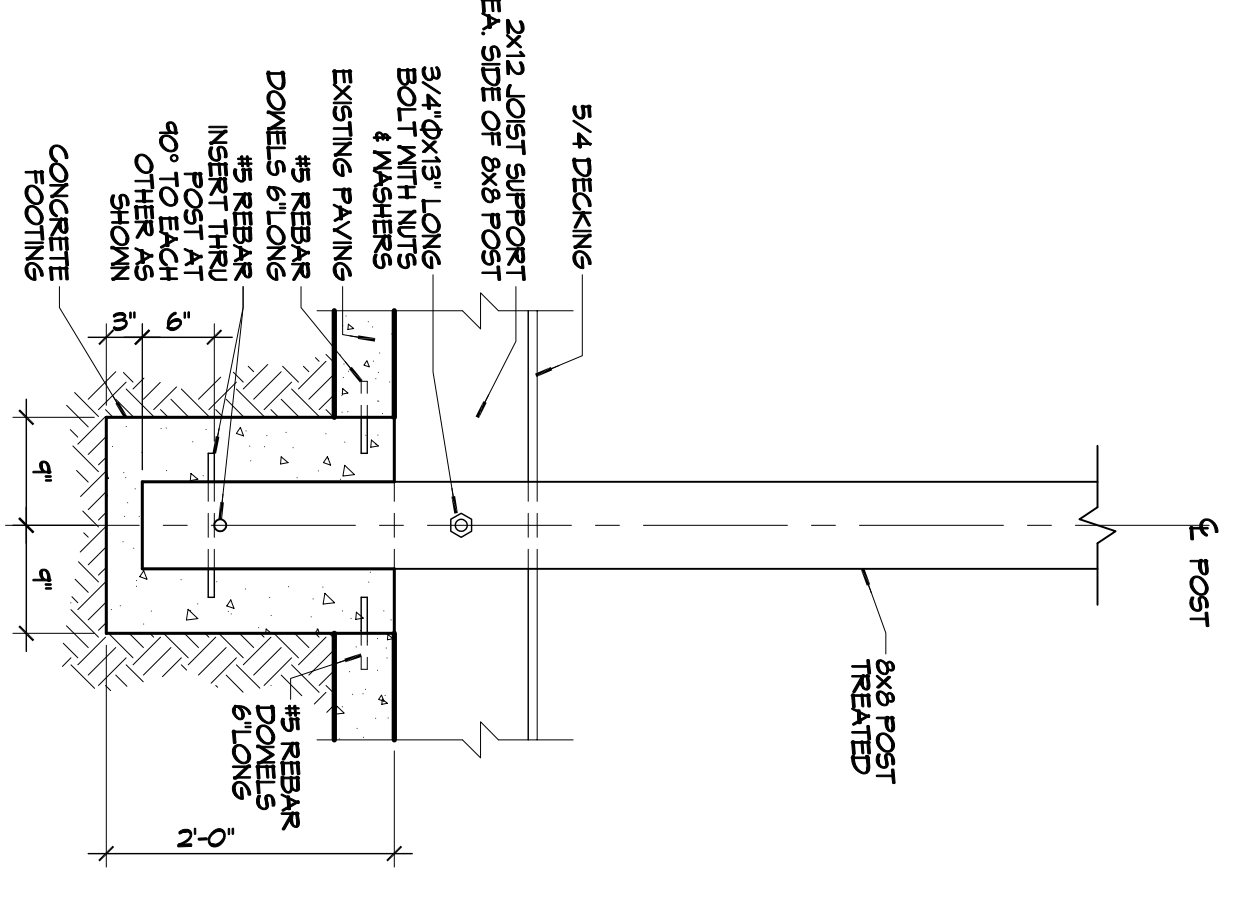
10 PATIO ROOF DETAIL
SCALE: 3/4"=1'-0"



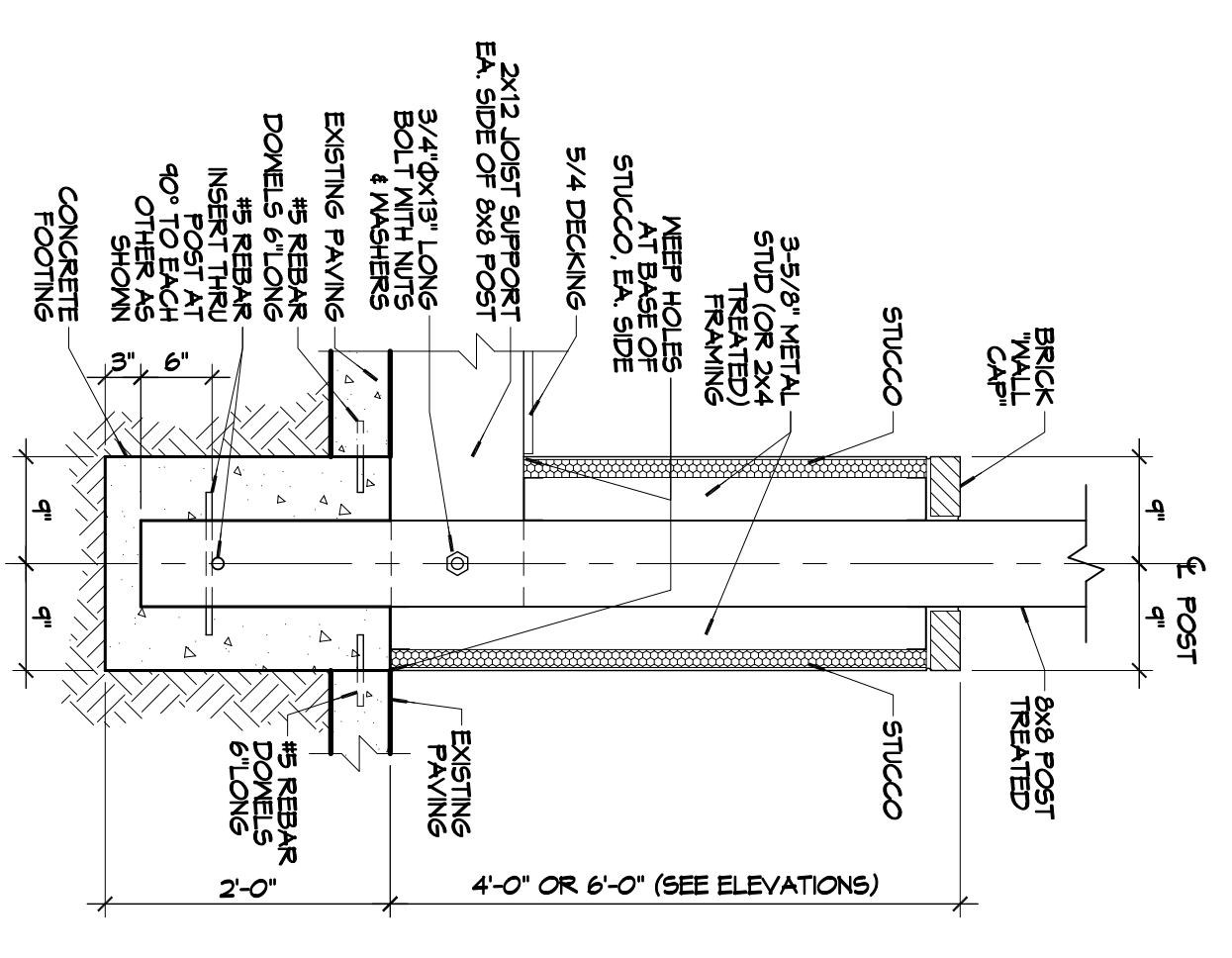
11 PATIO ROOF DETAIL
SCALE: 3/4"=1'-0"



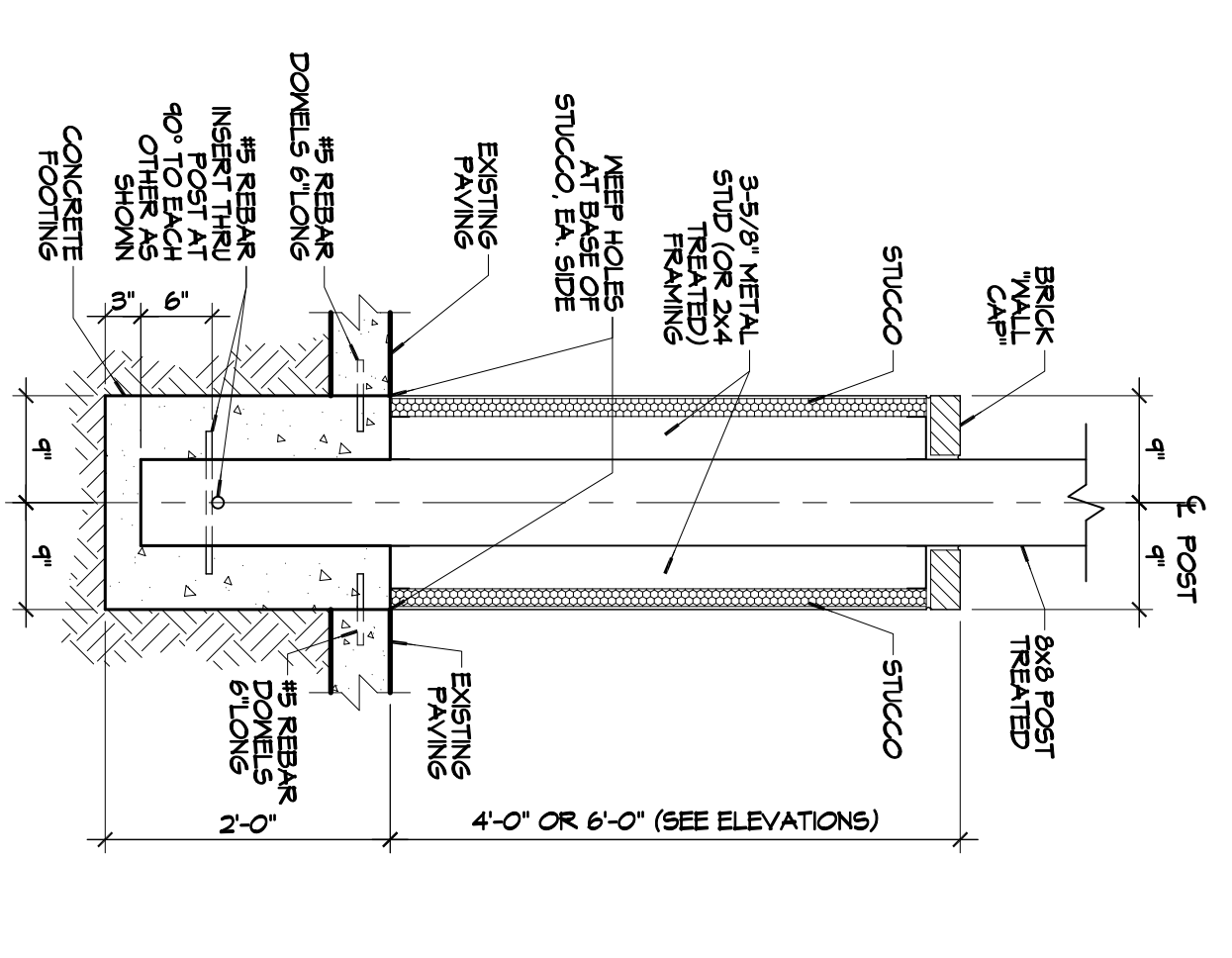
12 PATIO ROOF DETAIL
SCALE: 3/4"=1'-0"



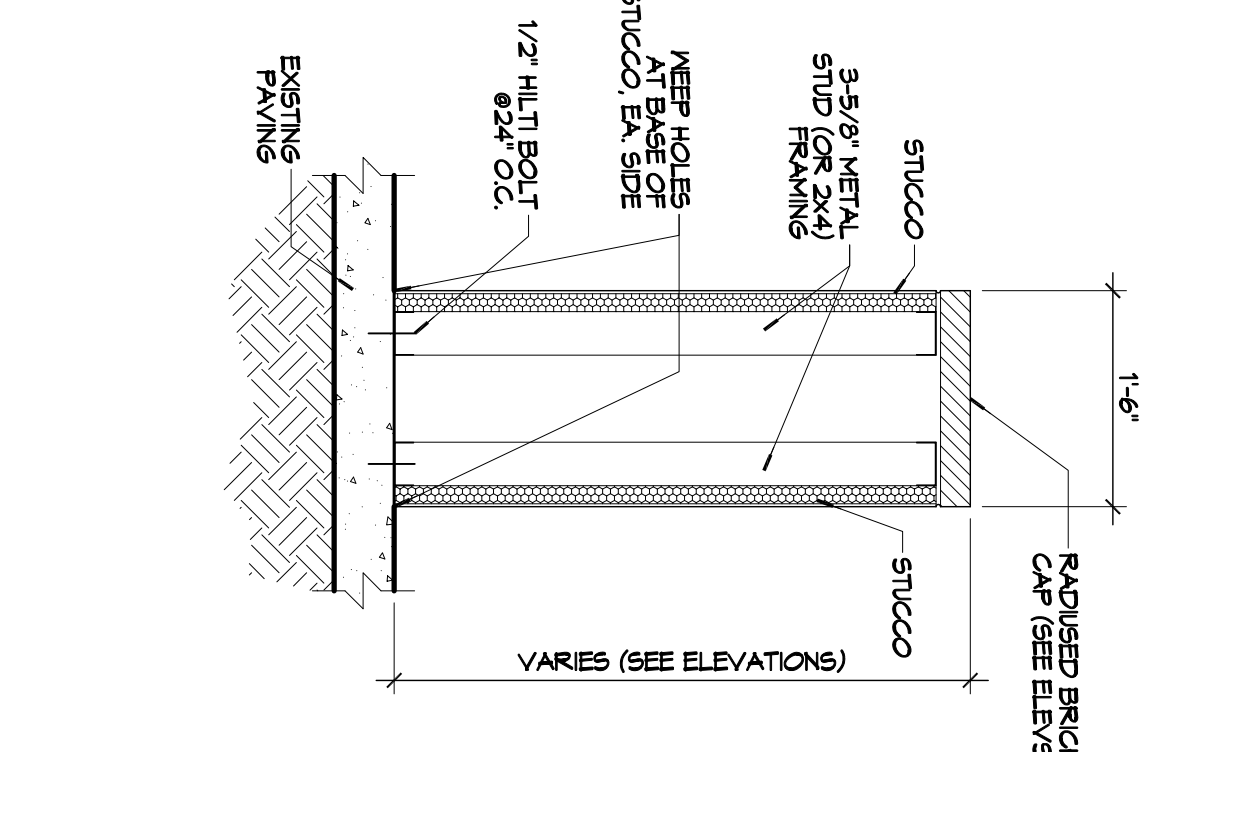
6 PATIO WALL SECT. @ POST
SCALE: 3/4"=1'-0"



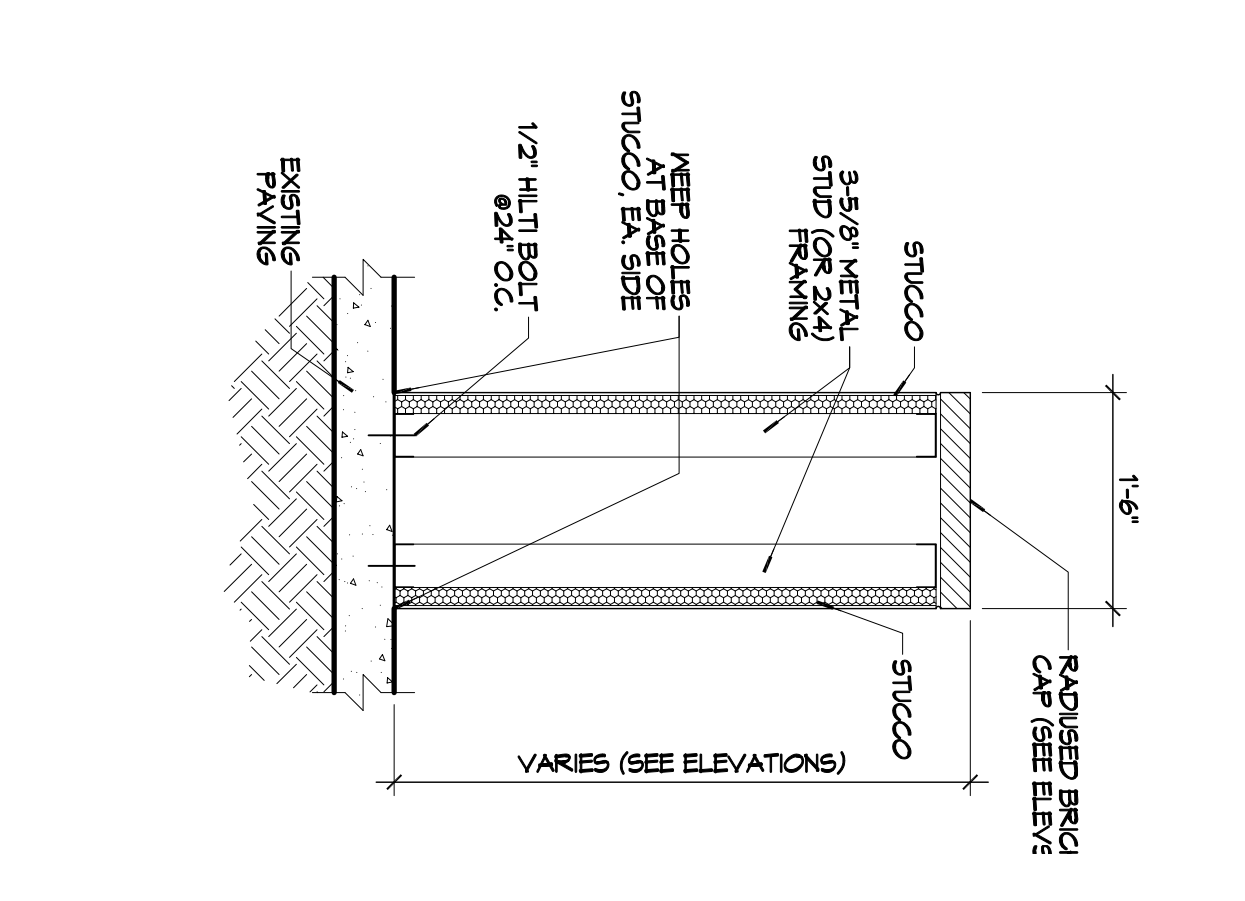
5 PATIO WALL SECT. @ POST
SCALE: 3/4"=1'-0"



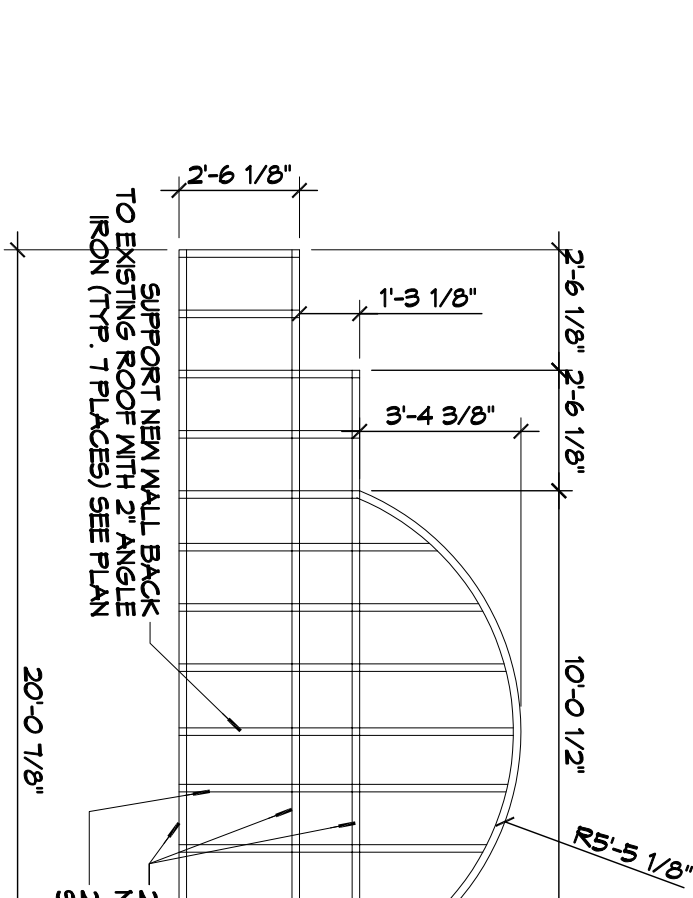
4 PATIO WALL SECT. @ POST
SCALE: 3/4"=1'-0"



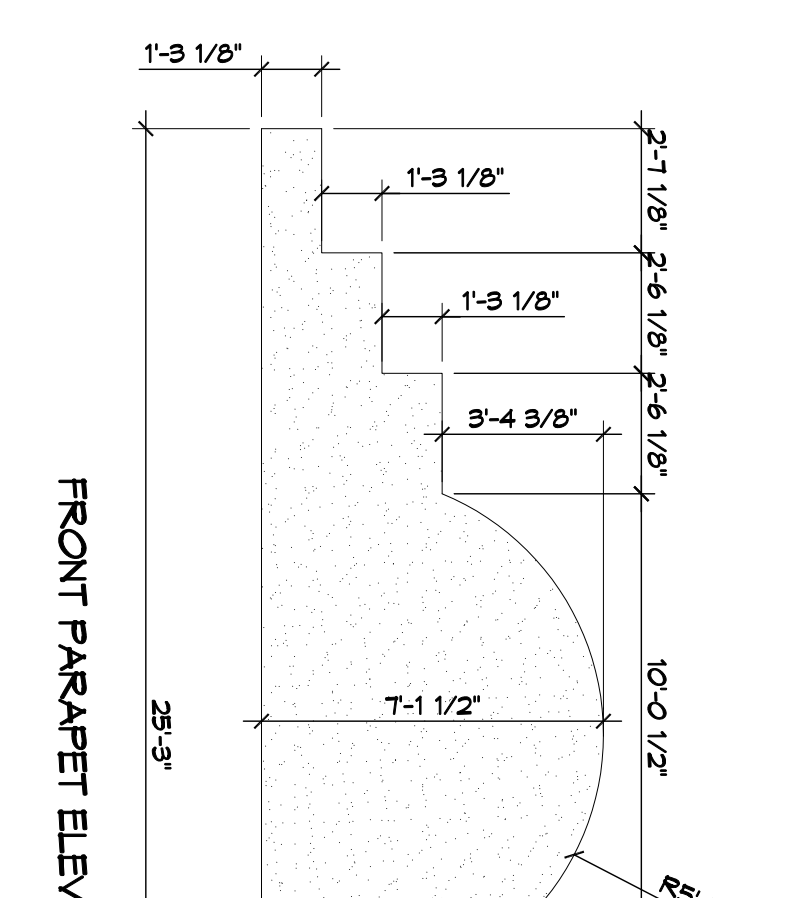
3 PATIO WALL SECTION
SCALE: 3/4"=1'-0"



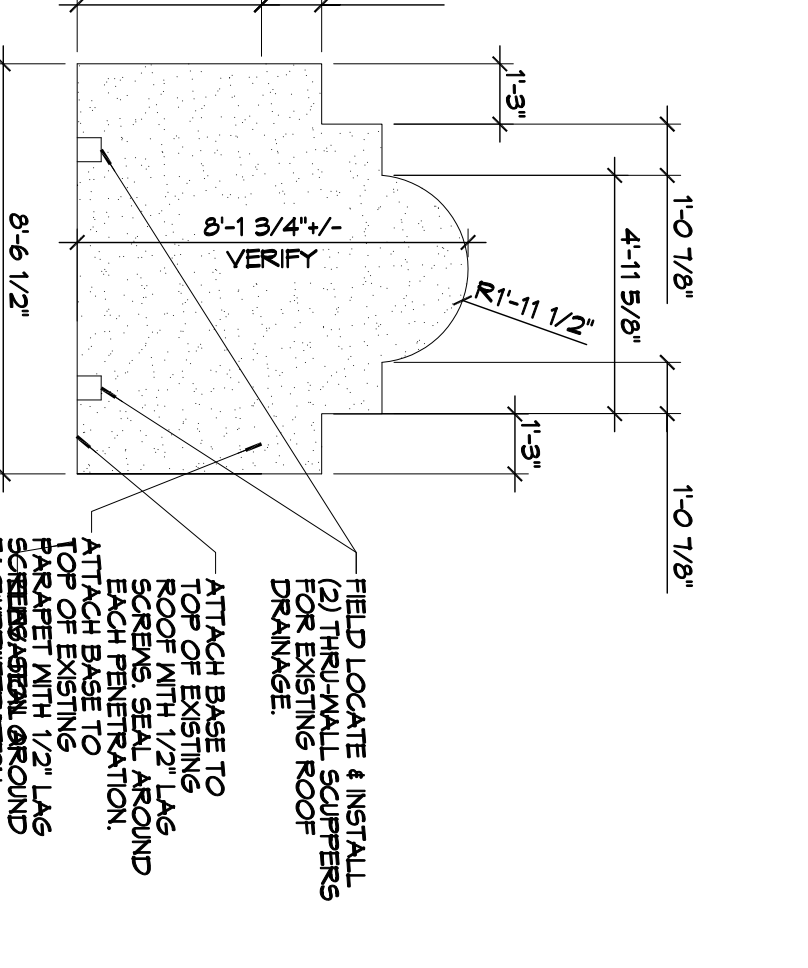
3 PATIO WALL SECTION
SCALE: 3/4"=1'-0"



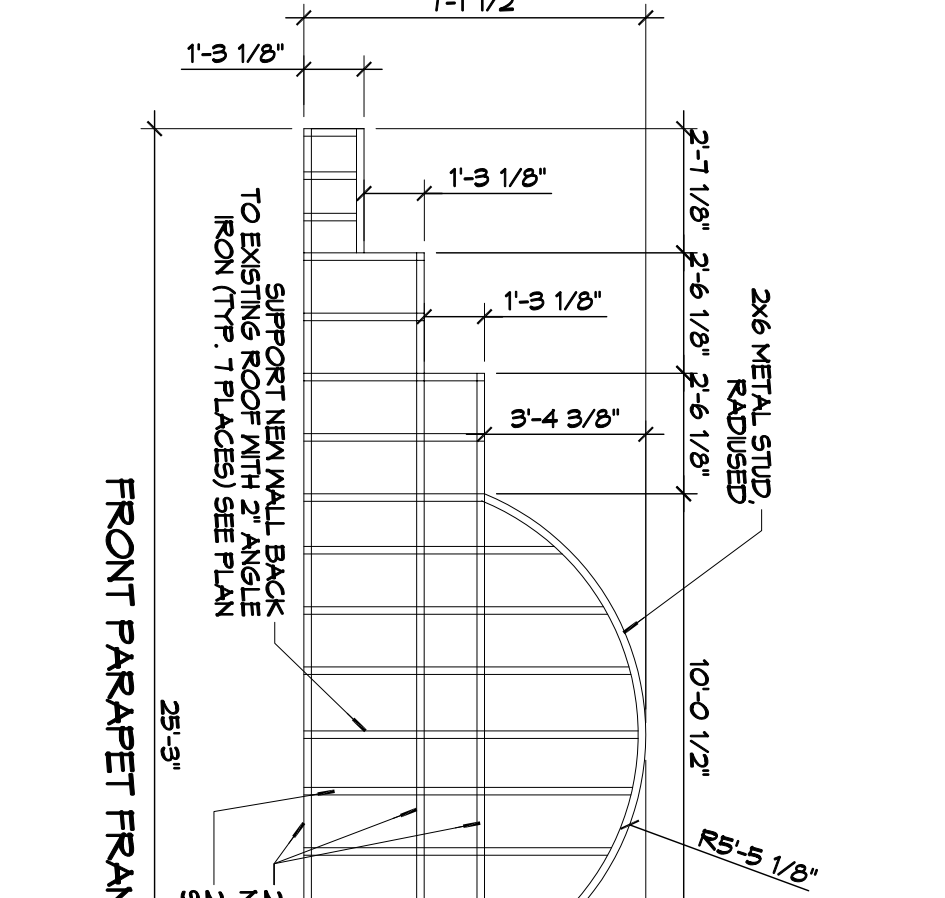
3 REAR PARAPET ELEVATIONS
SCALE: 1/4"=1'-0"



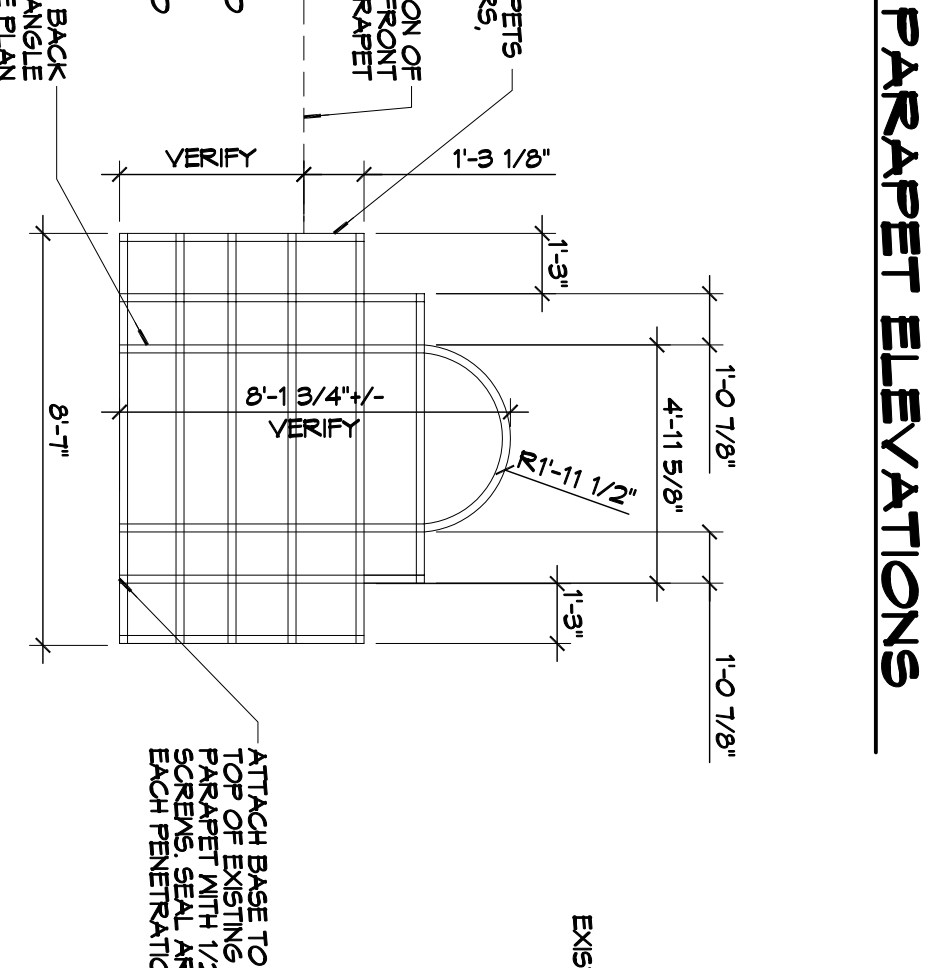
FRONT PARAPET ELEVATION



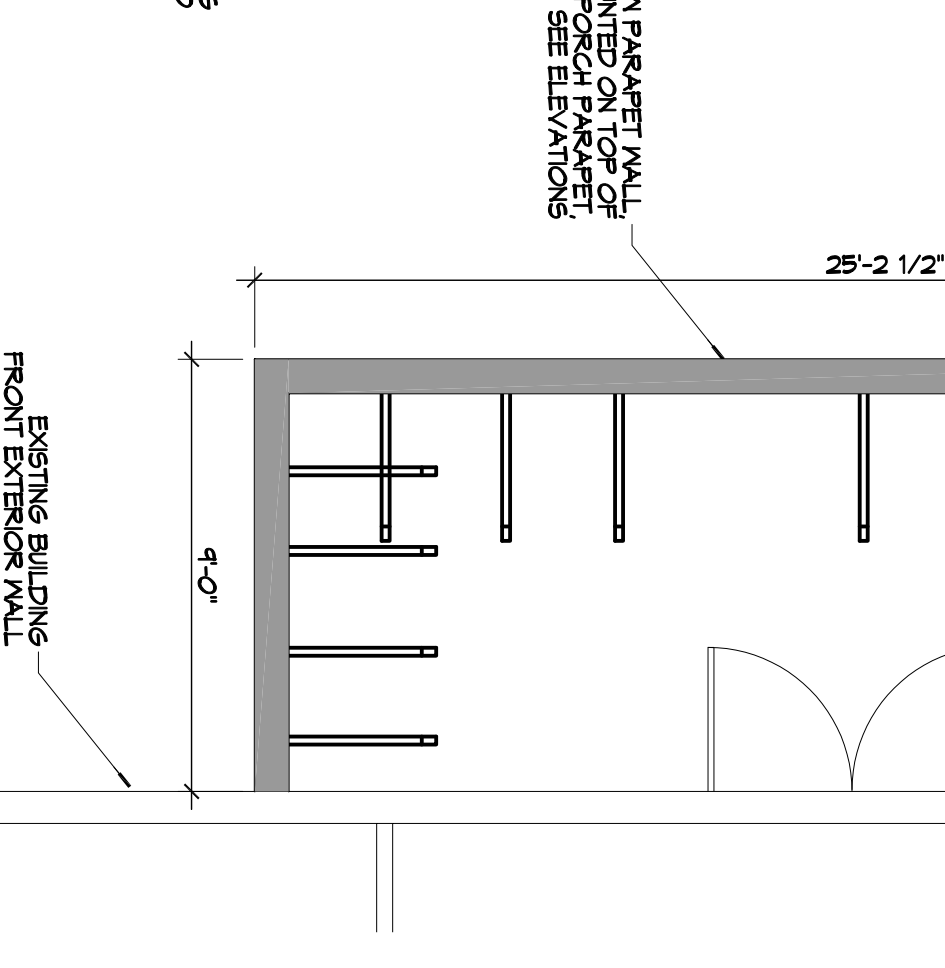
SIDE PARAPET ELEVATION



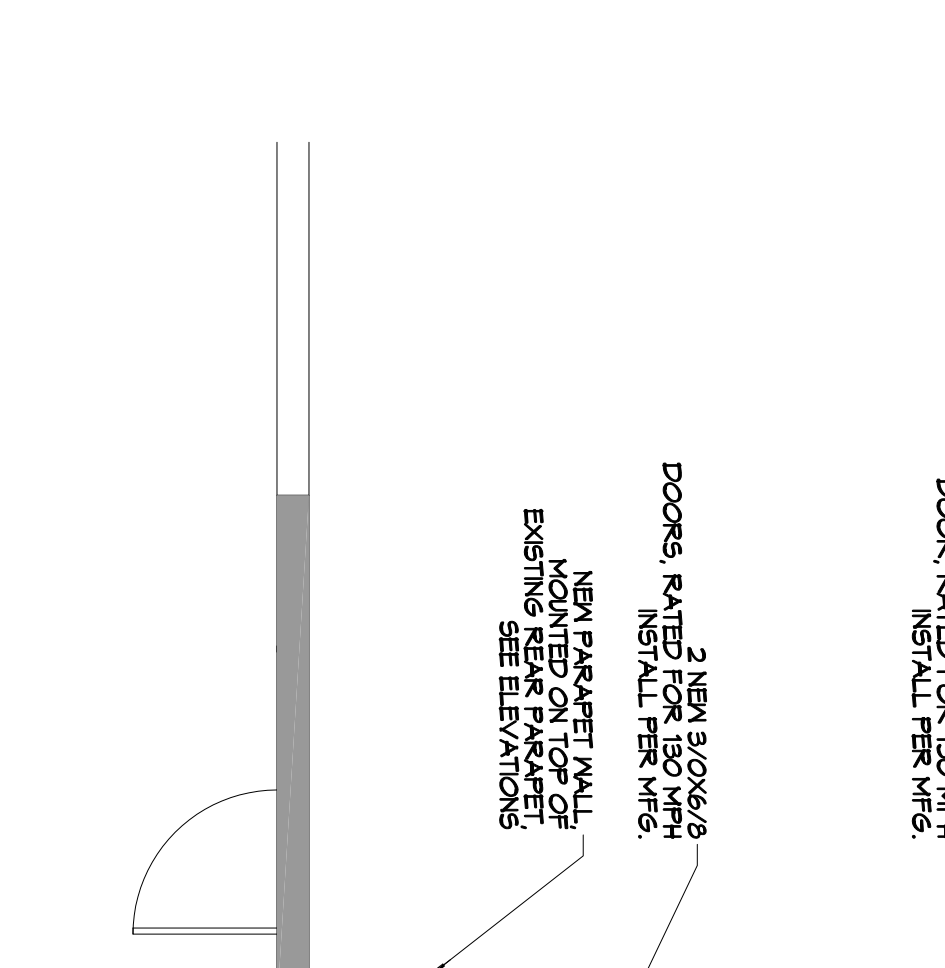
FRONT PARAPET FRAMING



SIDE PARAPET FRAMING



1 FRONT PORCH PARAPET PLAN
SCALE: 1/4"=1'-0"



13 REAR PARAPET PLAN
SCALE: 1/4"=1'-0"

DESIGN CRITERIA:

THE CONSTRUCTION FOR SAID RESIDENCE, WHERE BASIC ACCORDANCE WITH THE MINIMUM PER HOUR, IS DESCRIBED IN AMERICAN FRAME AND PAPER ASSOCIATION (AF&PA) WOOD FRAME CONSTRUCTION MANUAL FOR ONE AND TWO FAMILY DWELLINGS (FROM 2001 ED. (NO. 1) AND AS WELL AS THE INTERNATIONAL RESIDENTIAL CODE (IRC) AS THE INTERVENING RESIDENTIAL CODE (IRC) FURNISHES SPECIFICATIONS. ALL NEW WORK SHALL BE FURNISHED STRIPPED.

DOOR RATED SET BY 130 MPH INSTALL PER MFG.
NEW 8' ROLLUP DOOR RATED SET BY 130 MPH INSTALL PER MFG.
DOORS RATED FOR 130 MPH INSTALL PER MFG.
NEW PARAPET WALL MOUNTED ON TOP OF EXISTING REAR PARAPET SEE ELEVATIONS

| REVISIONS | | DATE |
|-----------|-------------|------|
| # | DESCRIPTION | |
| | | |
| | | |

DAMMON ENGINEERING, INC.
LOUISIANA & MISSISSIPPI
Chief Engineer: Brian Mistich, PE
554 Old Spanish Trail
Slidell, LA 70458
www.dammonengineering.com
info@dammonengineering.com
PH: 985.649.5832 F: 985.641.9590

SHEET TITLE:
COVERED FRONT PORCH NEW PARAPET DETAILS & TRELLIS DETAILS

A103

601 VETERANS BLVD. METAIRIE AVE, LOUISIANA
JOB No: 2266 DATE: 12/16/19
DRAWN BY: CKD/JTL CHECKED BY: BAM

4 of 44