

**LIFE-SAFETY INFORMATION**

<b>APPLICABLE CODES</b>	NFPA 101 LIFE-SAFETY CODE 2012
<b>OCCUPANCY TYPE(S) AND CHAPTER(S)</b>	ASSEMBLY (REFERENCE CHAPTER 6.12)
<b>OCCUPANT LOAD FACTOR</b>	3165 SF PER OCCUPANT (NET)
<b>ASSEMBLY (NET)</b>	211 OCCUPANTS
<b>KITCHEN (GROSS)</b>	3336 SF PER OCCUPANT
<b>KITCHEN (GROSS)</b>	3336 SF PER OCCUPANT
<b>CLASSIFICATION OF HAZARD OF CONTENTS</b>	(REFERENCE CHAPTER AND 6.2.2 SPECIFY LOW, ORDINARY, OR HIGH)
<b>CONSTRUCTION TYPE(S)</b>	(REFERENCE CHAPTER 6, TABLE A.6.2.1.2 AND COMMENTARY TABLE B.1 IN HANDBOOK)
<b>MINIMUM EXIT SEPARATION DISTANCE FOR REMOTELY LOCATED EXITS</b>	(REFERENCE SECTION 7.5, SPECIFY 1/2 OR 1/3 DIAGONAL DISTANCE OF AREA SERVED)
<b>1/2 DIAGONAL =</b>	75'-10"
<b>MAXIMUM COMMON PATH OF TRAVEL DISTANCE</b>	(REFERENCE OCCUPANCY CHAPTER AND TABLE A.7.6)
<b>ASSEMBLY = 20 FT</b>	(REFERENCE OCCUPANCY CHAPTER AND TABLE A.7.6)
<b>MAXIMUM DEAD-END CORRIDOR DISTANCE</b>	(REFERENCE OCCUPANCY CHAPTER AND TABLE A.7.6)
<b>ASSEMBLY = 20 FT</b>	(REFERENCE OCCUPANCY CHAPTER AND TABLE A.7.6)
<b>MAXIMUM TRAVEL DISTANCE TO EXITS</b>	(REFERENCE OCCUPANCY CHAPTER AND TABLE A.7.6)
<b>ASSEMBLY = 200 FT</b>	(REFERENCE OCCUPANCY CHAPTER AND TABLE A.7.6)
<b>EXTINGUISHMENT REQUIREMENTS</b>	NOT SPRINKLED (NOT REQUIRED)
<b>DETECTION, ALARM, AND COMMUNICATION SYSTEMS</b>	NOT REQUIRED
<b>ALLOWABLE HEIGHT AND BUILDING AREA</b>	PER IBC EQUIVALENT CONSTRUCTION TYPE

**BUILDING CODE INFORMATION**

<b>APPLICABLE CODES: IBC 2012</b>	CHAPTER 9, USE AND OCCUPANCY CLASSIFICATION
<b>ASSEMBLY A2</b>	RESTAURANTS, CATERING AND SIMILAR DINING FACILITIES SECTION 903.9
<b>OCCUPANT LOAD</b>	(TABLE 1004.4 & 1004.1.2)
<b>FIXED SEATING / TABLE AND CHAIRS</b>	15 SF PER OCCUPANT (NET)
<b>KITCHEN, COMMERCIAL</b>	200 SF PER OCCUPANT (GROSS)   3336 S.F. (GROSS)   17 OCCUPANTS
<b>CONSTRUCTION TYPE(S)</b>	(TABLE 603)
<b>ALLOWABLE HEIGHT AND BUILDING AREA LIMITED BY TYPE OF CONSTRUCTION</b>	
<b>GROUP</b>	MAXIMUM HEIGHT IN STORES   4500
<b>A2</b>	MINIMUM HEIGHT IN STORES   9,041

**WIND SPEED DESIGN REQUIREMENTS**

THIS BUILDING SHALL BE DESIGNED WITH IBC SEC 1609.4.6 A FULLY ENCLOSED BLDG USING THE FOLLOWING INFORMATION:

WIND DESIGN DATA:

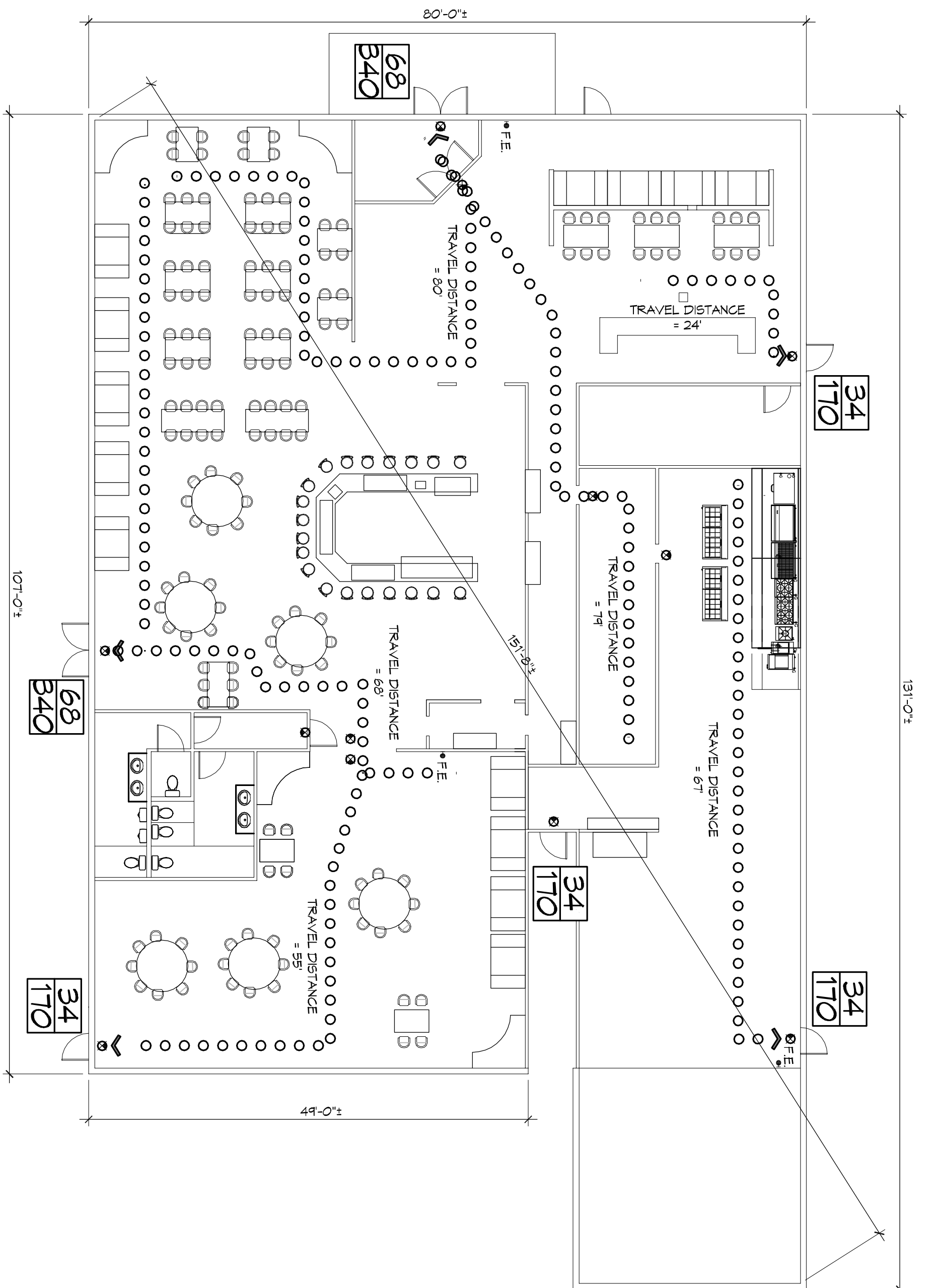
DETERMINATION OF WIND LOADS SHALL BE IN ACCORDANCE WITH IBC SEC 1603.3 (A), (B), OR (C) DEPENDING ON THE RISK CATEGORY

V ULTIMATE WIND SPEED (S SECOND 6.97) =	130 MPH (IBC FIG. 1603C)
V NOMINAL WIND SPEED (60/3.1)	101 MPH
RISK FACTOR (CATEGORY II BLDG)	C
TOPOGRAPHIC EXPOSURE =	C
DESIGN WIND PRESSURE (ASCE 7-10 TABLE 28.6-1):	47.5 PSF
INTERNAL PRESSURE COEFFICIENT (ASCE 7-10 TABLE 28.11-1):	+ 0.18
LIVE LOADS (IBC SEC. 1607):	50 PSF
OFFICE (IBC TABLE 1607.1):	100 PSF
OFFICE LOBBY (IBC TABLE 1607.1):	100 PSF
CORRIDORS 1ST FLOOR	250 PSF
STORAGE WAREHOUSE	100 PSF & 1,000 LBS CONCENTRATED
RETAIL STORES 1ST FLOOR	100 PSF & 1,000 LBS CONCENTRATED
ROOF LIVE LOADS (IBC TABLE 1607.1):	20 PSF & 300 LB CONCENTRATED
GROUND SNOW LOAD (IBC FIG. 1603.2):	5 PSF

**FLOOD ZONE INFORMATION**

<b>F.R.M. COMMUNITY MAP NO 22051C 0155 E, REVISED 3/23/1995</b>	
<b>FLOOD ZONE:</b>	AE
<b>BASE FLOOD ELEVATION:</b>	3.5 NGVD
<b>ELEVATIONS REFER TO NGVD 1929 DATUM</b>	

**EL PASO MEXICAN RESTAURANT  
RENOVATION  
OF AN EXISTING RESTAURANT**



**LIFE-SAFETY LEGEND**

SYMBOL	DESCRIPTION
➤	EXITS
⊙	EXIT LIGHT
⋯	TRAVEL DISTANCE
⦿	FIRE EXTINGUISHER W/ WALL MTD BRACKET
⊠	DOOR WIDTH/CAPACITY

**VICINITY MAP**

**1:1 LIFE-SAFETY PLAN**

SCALE: 3/32" = 1'-0"



**SHEET INDEX**

SHEET #	SHEET TITLE
0001	GENERAL INFORMATION SHEET
0100	EXISTING SITE PLAN & PARKING
A101	ARCHITECTURAL FLOOR PLAN, PLUMBING & ELECTRICAL
A102	FRONT PORCH PARAPET DETAILS & REAR PARAPET DETAILS

**PROJECT STATISTICS**

EXISTING SQUARE FOOTAGE	4041 SF PER FLOOR
-------------------------	-------------------

**PROJECT LOCATION**

601 VETERANS BLVD, METAIRIE, LOUISIANA 70058  
 CONTACT:  
 REGISLDO CHAVEZ  
 (504) 655-1649

**DAMMON ENGINEERING, INC.**  
 LOUISIANA & MISSISSIPPI

Chief Engineer: Brian Mistich, PE  
 554 Old Spanish Trail  
 Slidell, LA 70458  
 www.dammonengineering.com  
 info@dammonengineering.com  
 PH: 985.649.5832 F: 985.641.5950

**REVISIONS**

#	DESCRIPTION	DATE

**GENERAL INFORMATION SHEET**

SHEET TITLE: 601 VETERANS BLVD, METAIRIE, LOUISIANA

JOB No: 2266 DATE:  

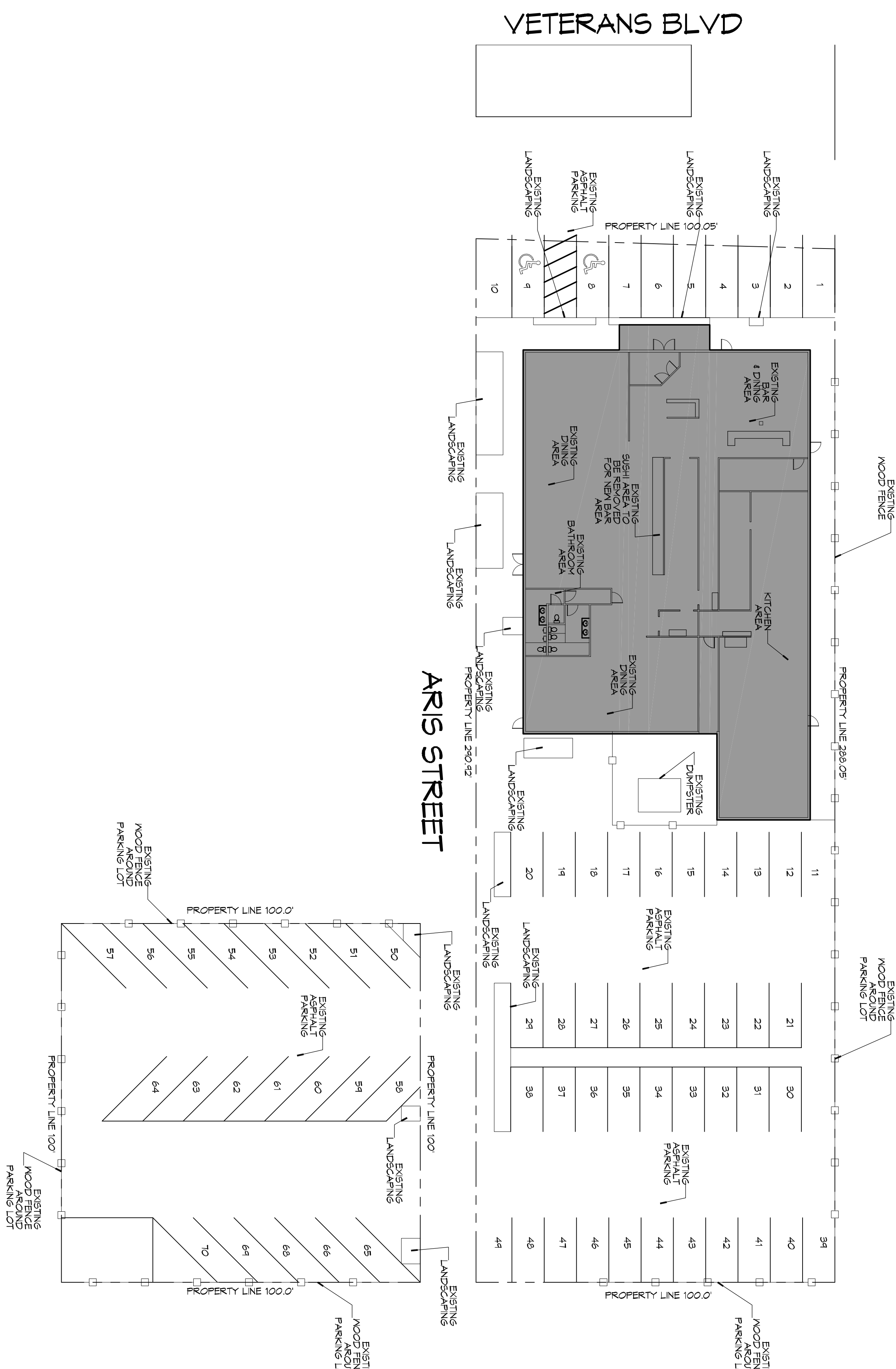
DRAWN BY: CKD CHECKED BY: BAM

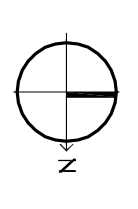
601 VETERANS BLVD, METAIRIE, LOUISIANA

THESE PLANS HAVE BEEN PREPARED BY ME OR UNDER MY SUPERVISION AND TO THE BEST OF MY KNOWLEDGE COMPLY WITH ALL LOCAL, STATE AND FEDERAL REQUIREMENTS

**5001**

1 of 4




  
 SCALE: 1"=30'-0"
   
**EXISTING SITE PLAN & PARKING**

I HAVE RESEARCHED THE BUILDING AND RELATED ZONES OF JEFFERSON PARISH COUNTY, THE LOUISIANA STATE ENGINEER'S BOARD AND THE BOARD OF ARCHITECTS BY MY KNOWLEDGE AND BELIEF THESE DRAWINGS ARE IN COMPLIANCE THEREWITH.

**DAMMON**  
**ENGINEERING, INC.**  
 LOUISIANA & MISSISSIPPI

Chief Engineer: Brian Mistich, PE  
 554 Old Spanish Trail  
 Stidell, LA 70458  
 www.dammonengineering.com  
 info@dammonengineering.com  
 PH: 985.649.5832 F: 985.641.5950

REVISIONS		DATE
#	DESCRIPTION	

**W L M S T A S O M E X I C A N**  
**R E S T A U R A N T**

601 VETERANS BLVD,  
 METAIRE AVE, LOUISIANA

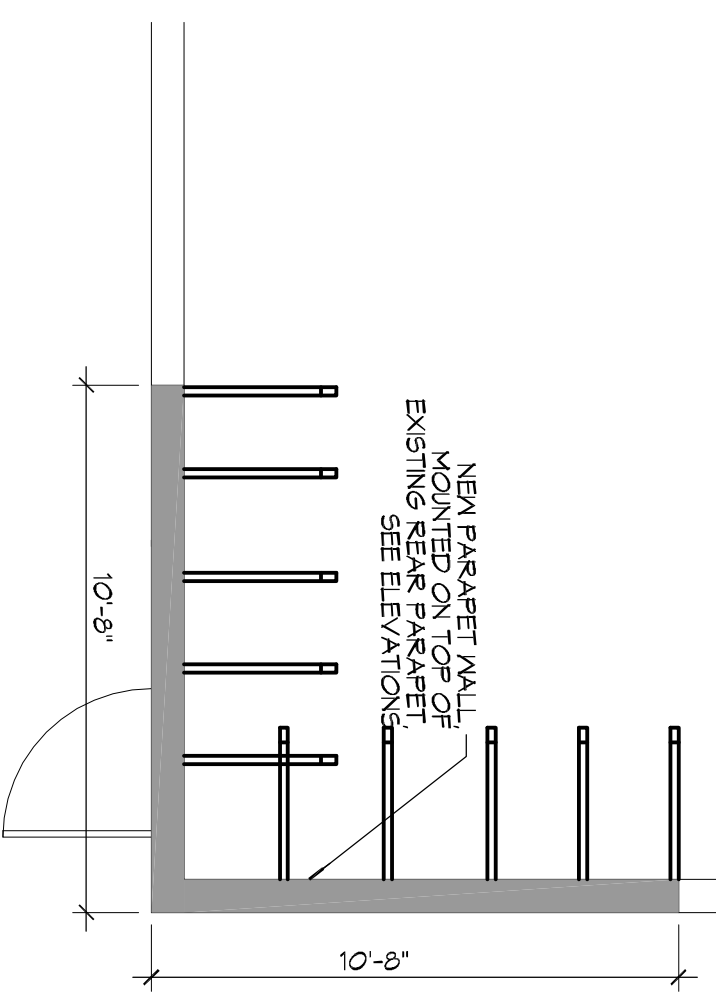
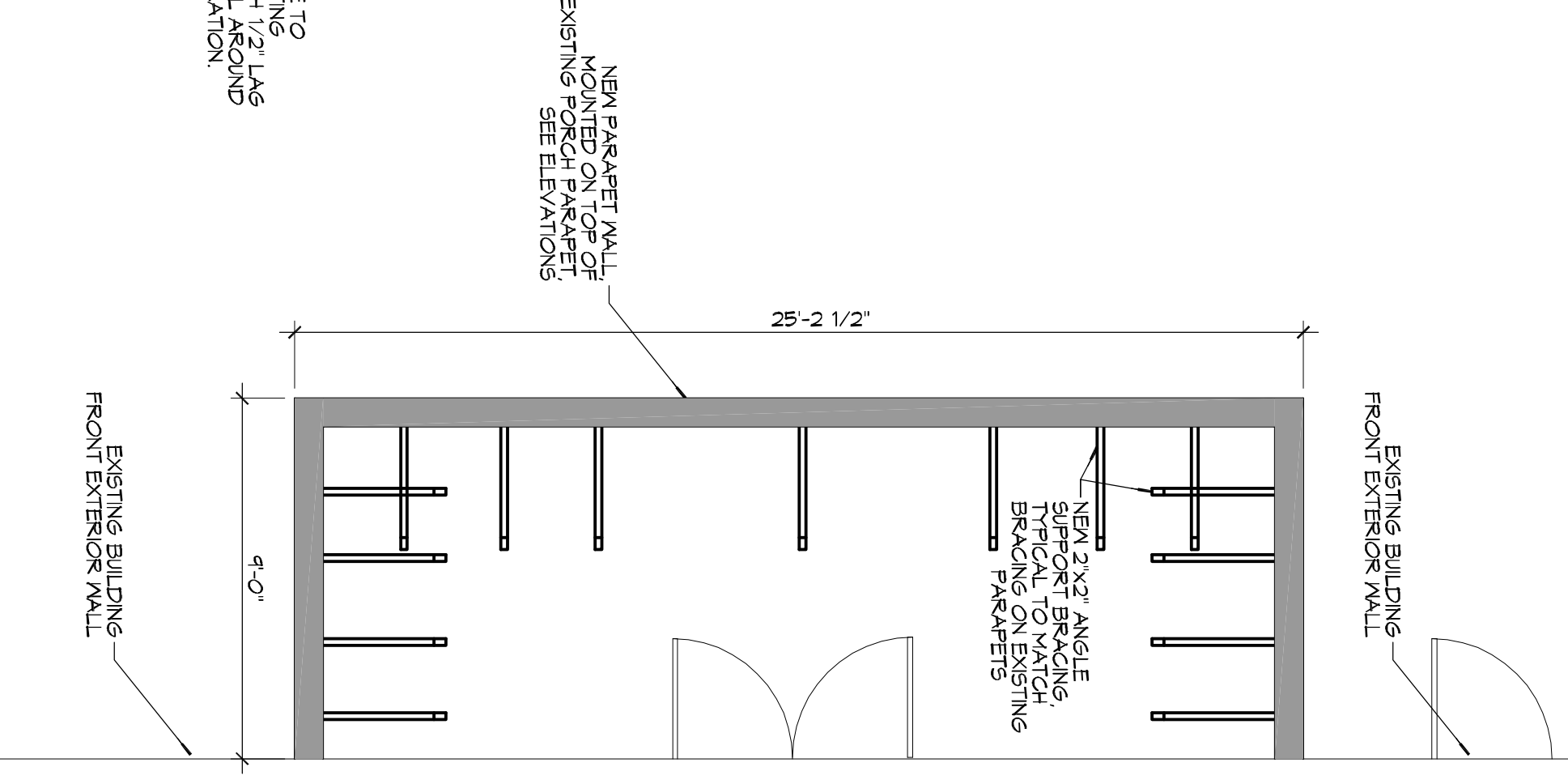
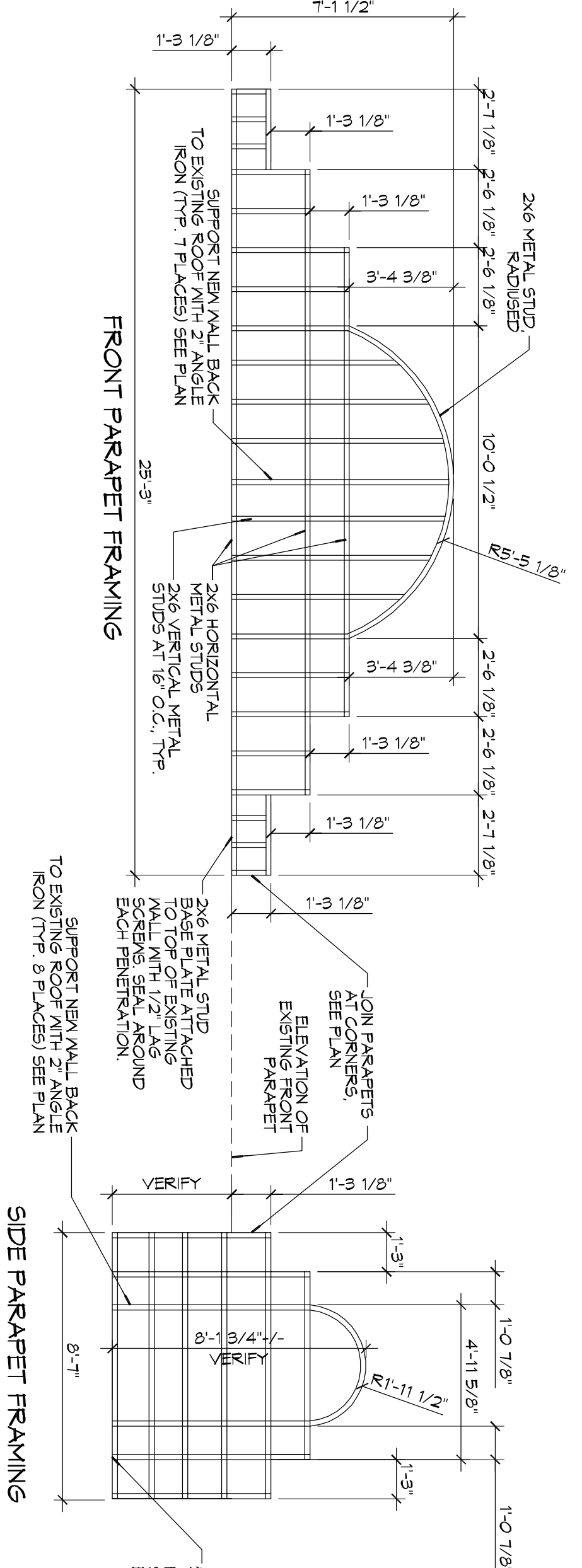
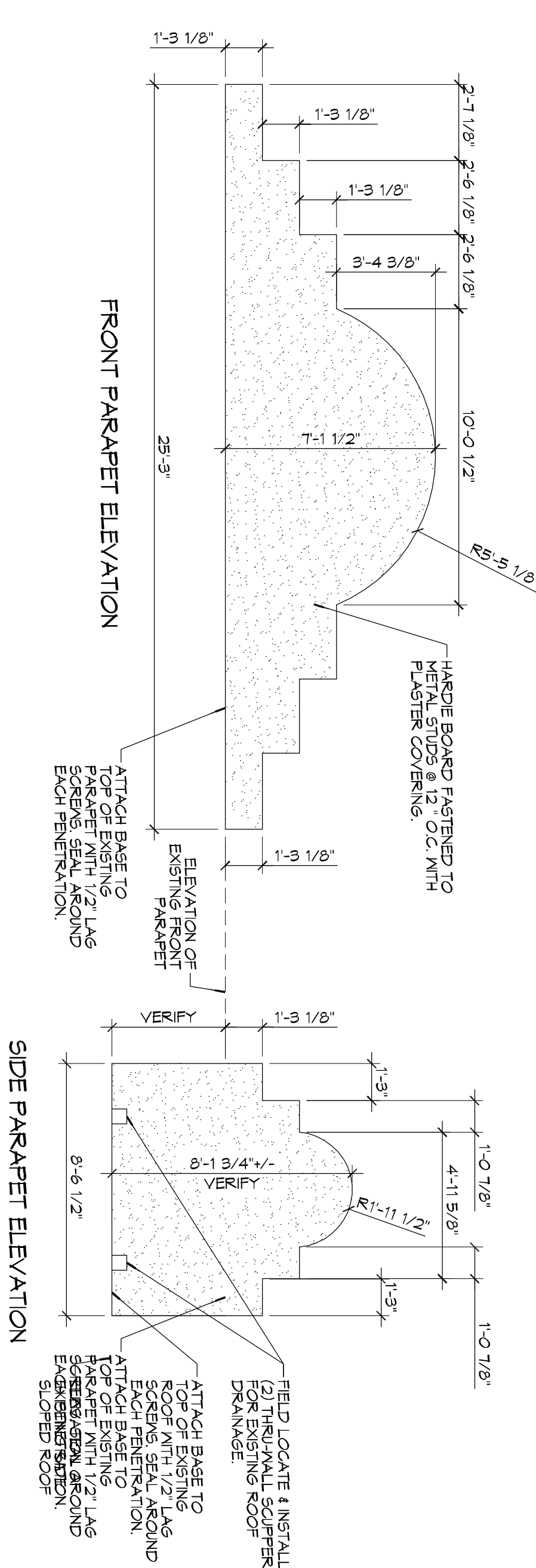
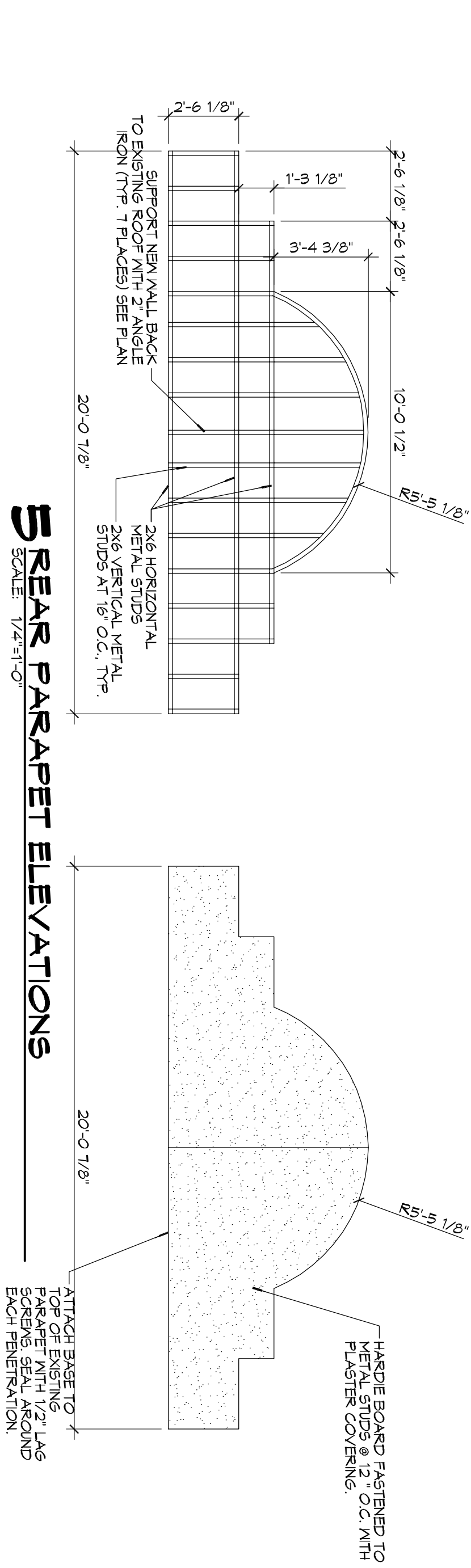
JOB No: 2266 DATE: 01-08-16  
 DRAWN BY: CKD CHECKED BY: BAN

SHEET TITLE:  
**EXISTING SITE PLAN & PARKING**

DRAWING NUMBER:  
**0100**

SHEET No: 2 of 4





**DESIGN CRITERIA:**  
 THE CONSTRUCTION FOR SAID RESIDENCE, WHERE BASIC CONSTRUCTION METHODS PER HOUR, IS DESIGNED IN ACCORDANCE WITH: AMERICAN FOREST AND PAPER ASSOCIATION (AF&PA) WOOD FRAME CONSTRUCTION MANUAL FOR ONE AND TWO FAMILY DWELLINGS (WFCM) 2001 EDITION AS WELL AS THE INTERNATIONAL RESIDENTIAL CODE (IRC) 2012 EDITION CHAPTER 4. ALL NEW WORK SHALL BE HURRICANE STRAPPED.

**DAMMON ENGINEERING, INC.**  
 LOUISIANA & MISSISSIPPI

Chief Engineer: Brian Mistich, PE  
 554 Old Spanish Trail  
 Stidell, LA 70458

www.dammonengineering.com  
 info@dammonengineering.com  
 PH: 985.649.5832 F: 985.641.5950

REVISIONS		DATE
#	DESCRIPTION	

**ZACON**

SHEET TITLE:  
 FRONT PORCH PARAPET DETAILS & REAR PARAPET DETAILS

DRAWING NUMBER:  
**A102**

JOB No: 2266 DATE: 01-08-16

DRAWN BY: CKD/JTL CHECKED BY: BAM

601 VETERANS BLVD.  
 METAIRIE AVE, LOUISIANA

**A102**

4 of 4