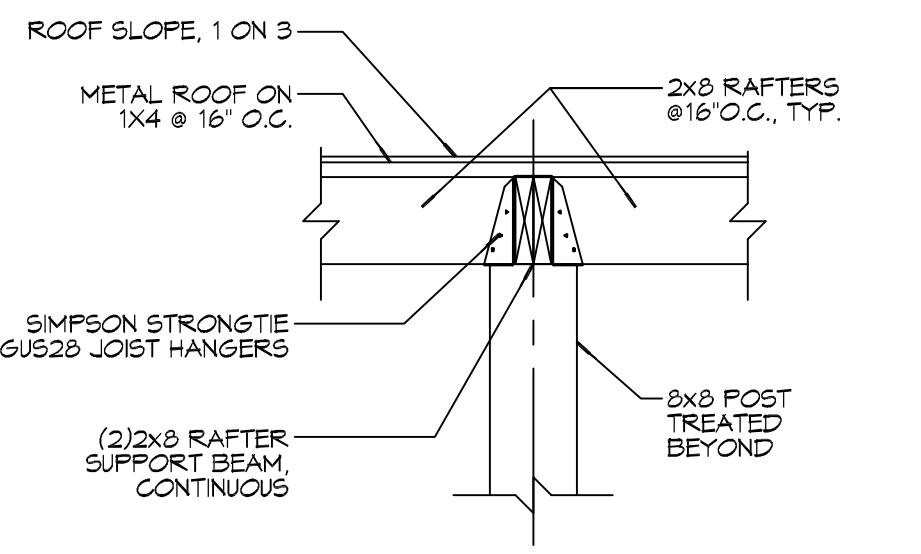
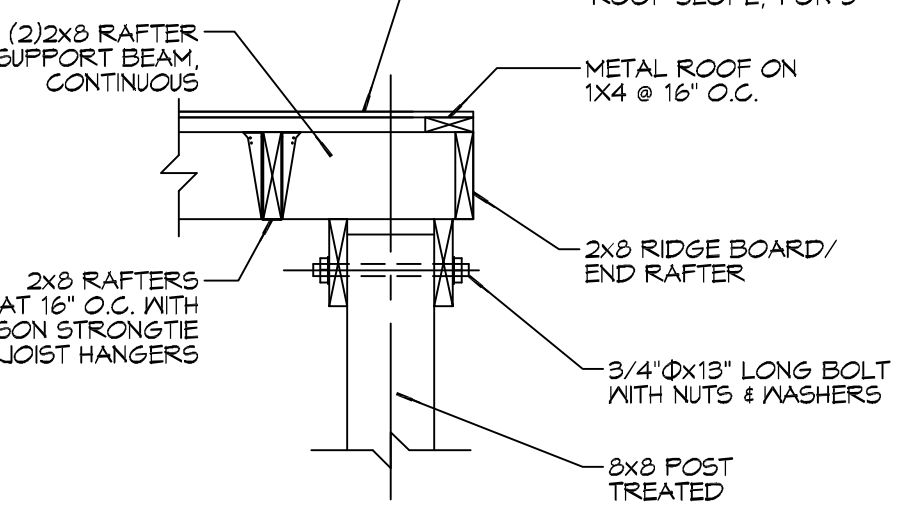


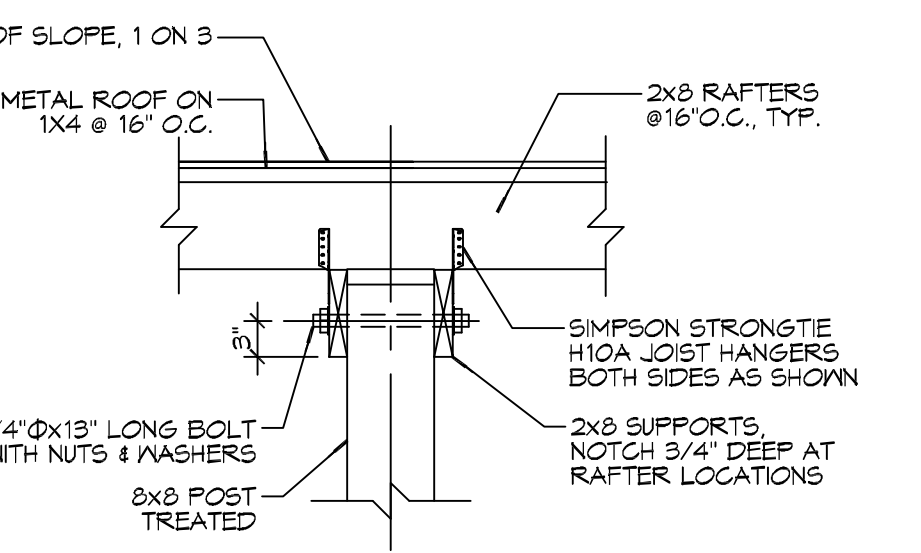
7 PATIO ROOF DETAIL
SCALE: 3/4"=1'-0"



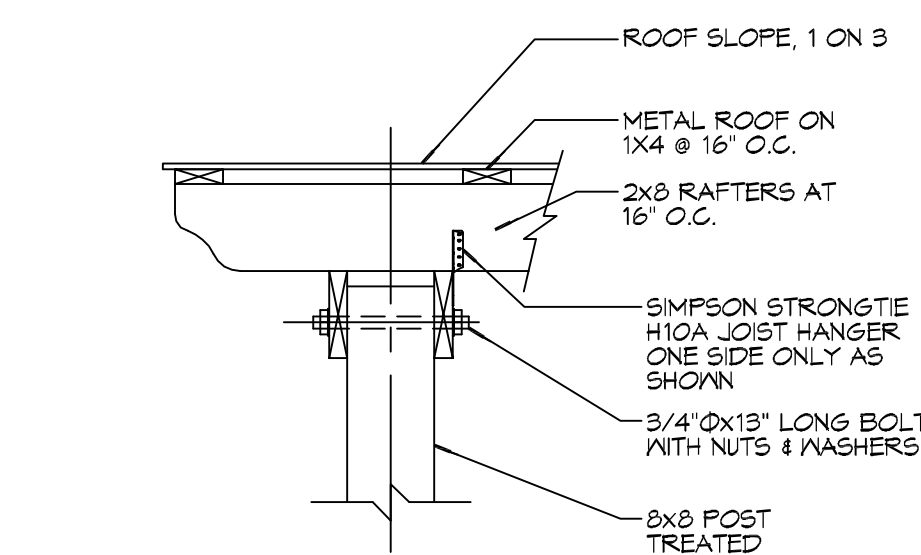
8 PATIO ROOF DETAIL
SCALE: 3/4"=1'-0"



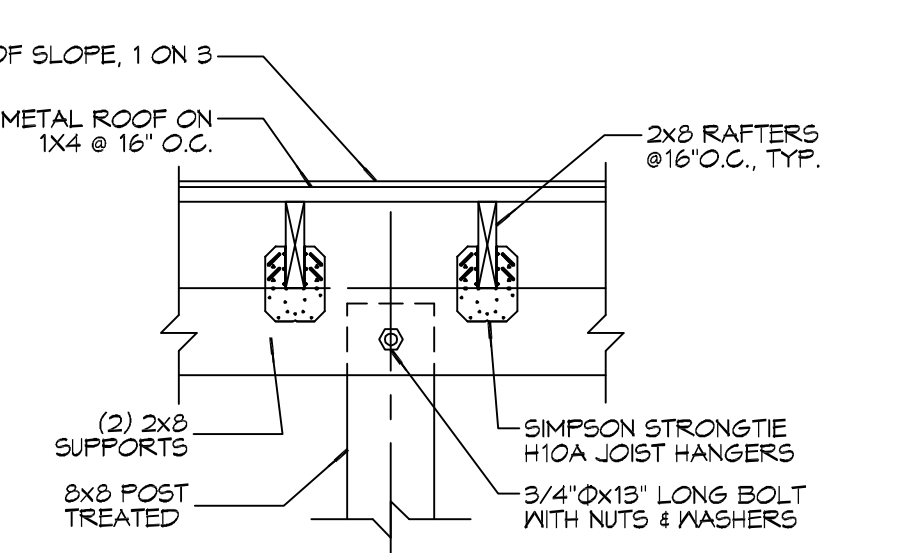
9 PATIO ROOF DETAIL
SCALE: 3/4"=1'-0"



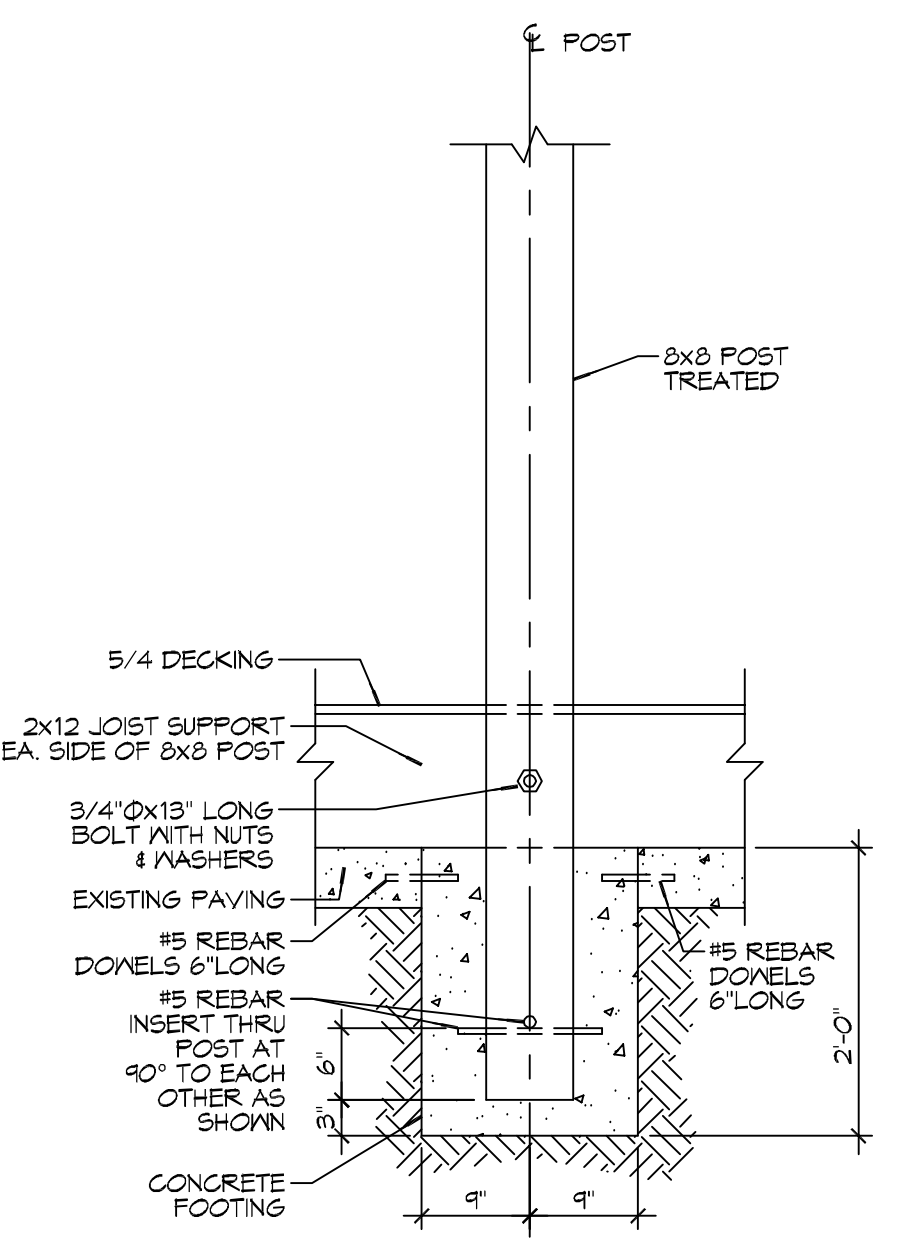
10 PATIO ROOF DETAIL
SCALE: 3/4"=1'-0"



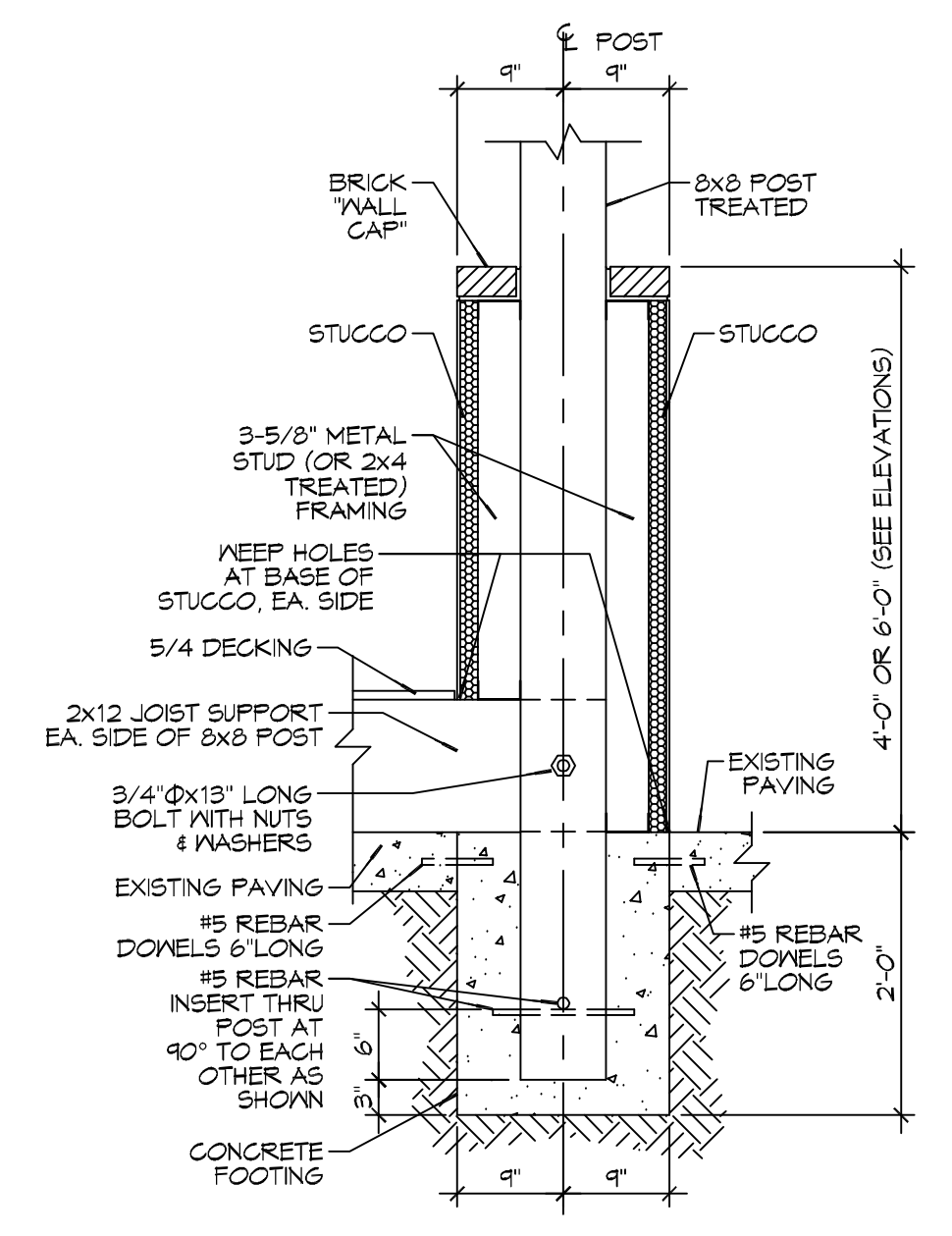
11 PATIO ROOF DETAIL
SCALE: 3/4"=1'-0"



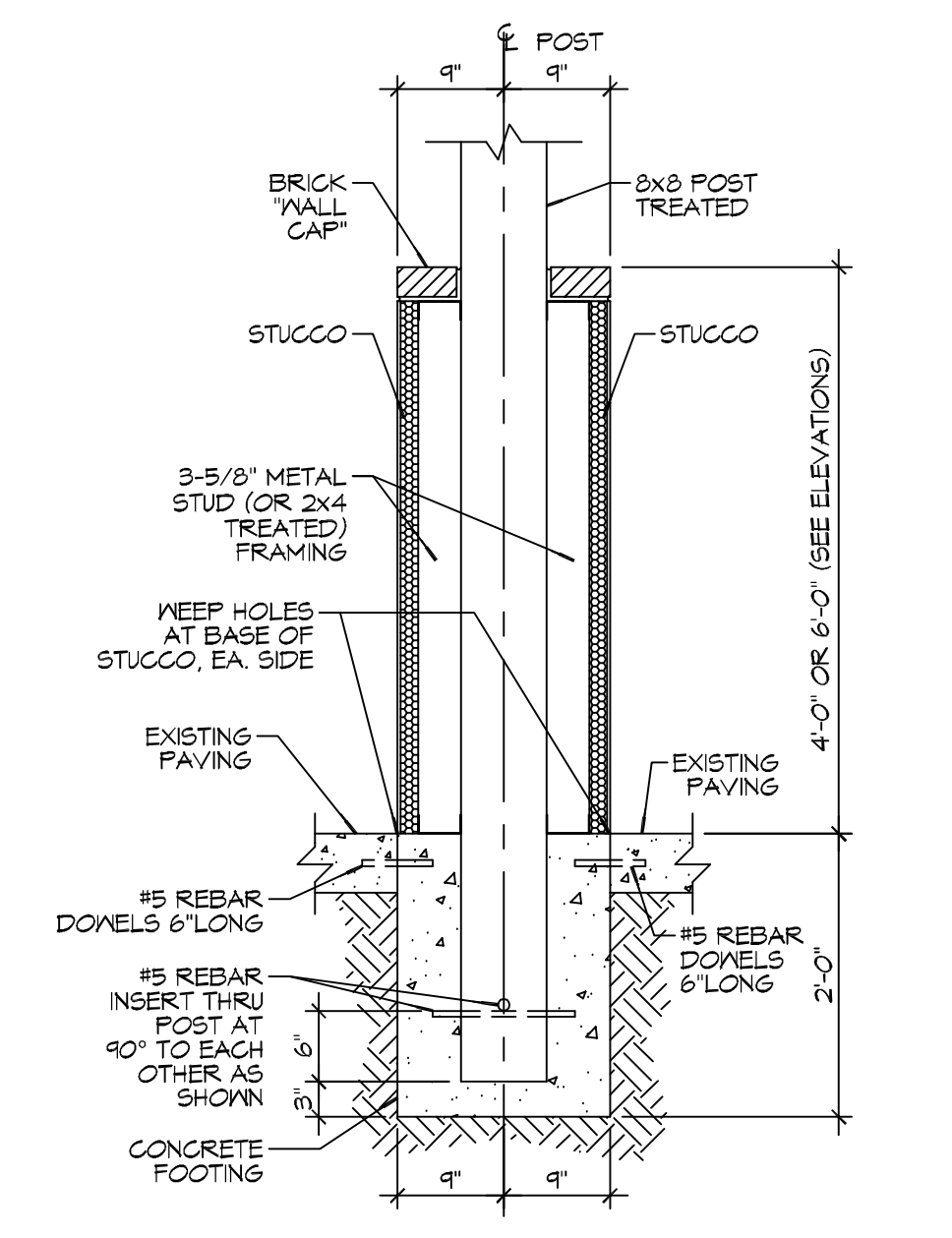
12 PATIO ROOF DETAIL
SCALE: 3/4"=1'-0"



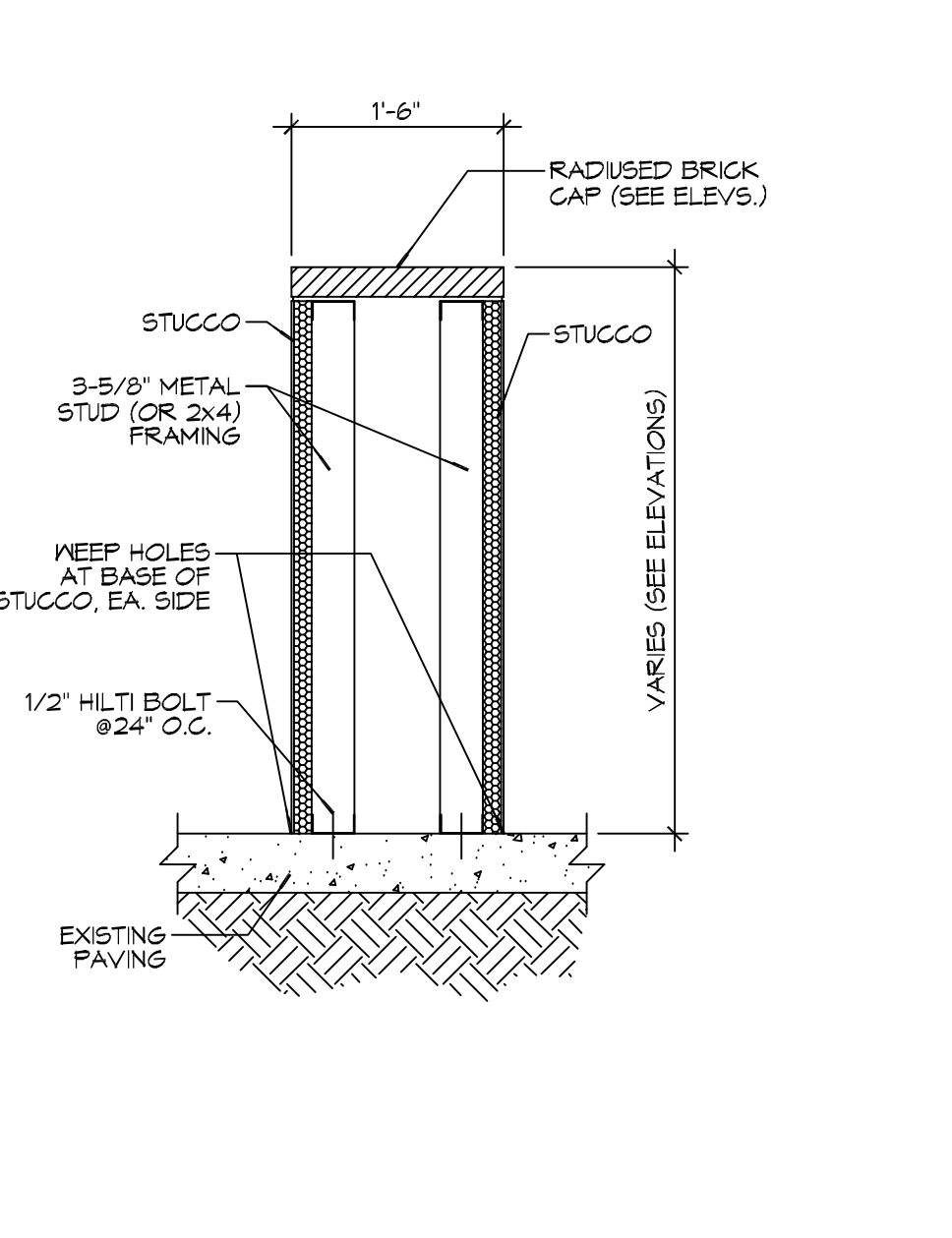
6 PATIO WALL SECT. @ POST
SCALE: 3/4"=1'-0"



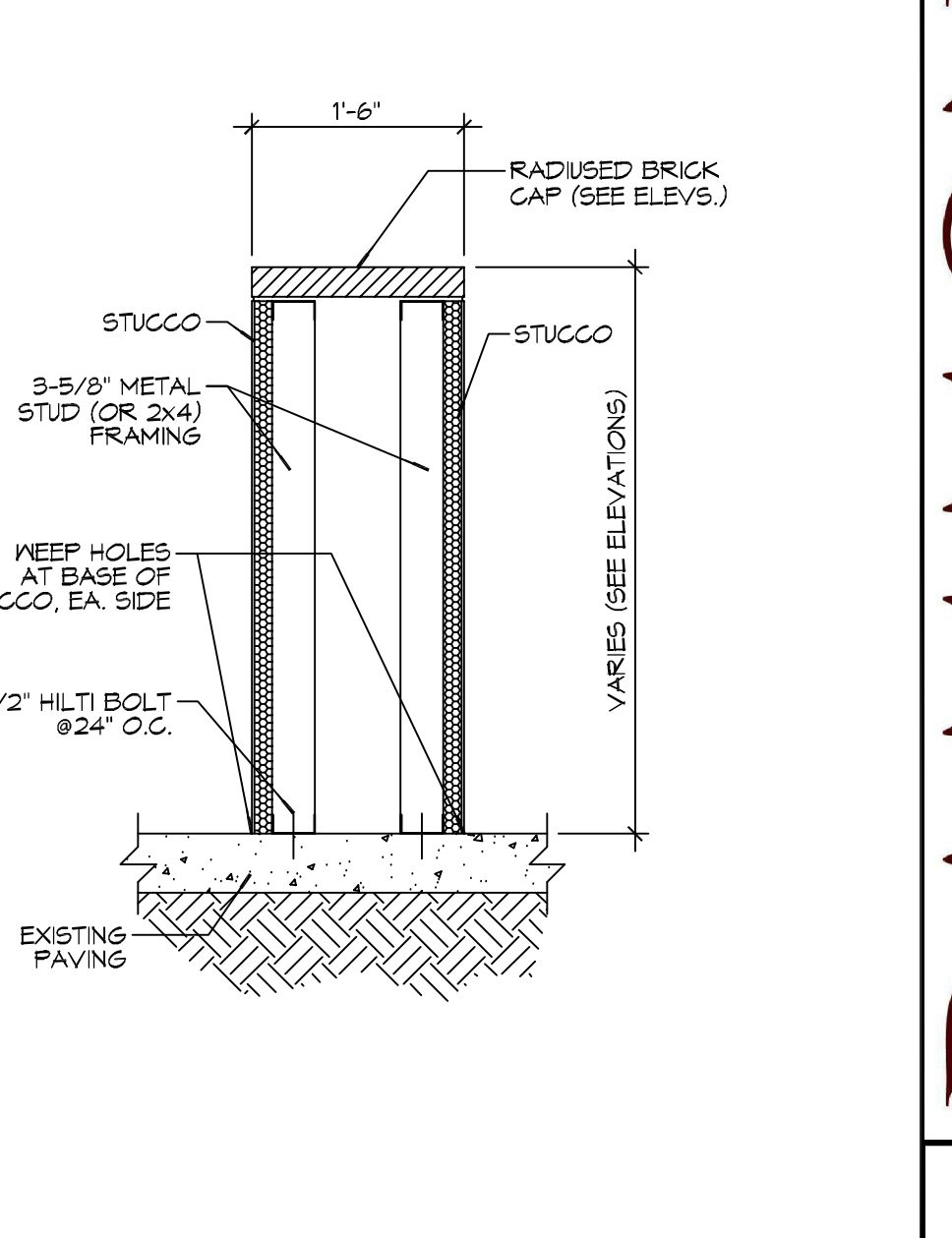
5 PATIO WALL SECT. @ POST
SCALE: 3/4"=1'-0"



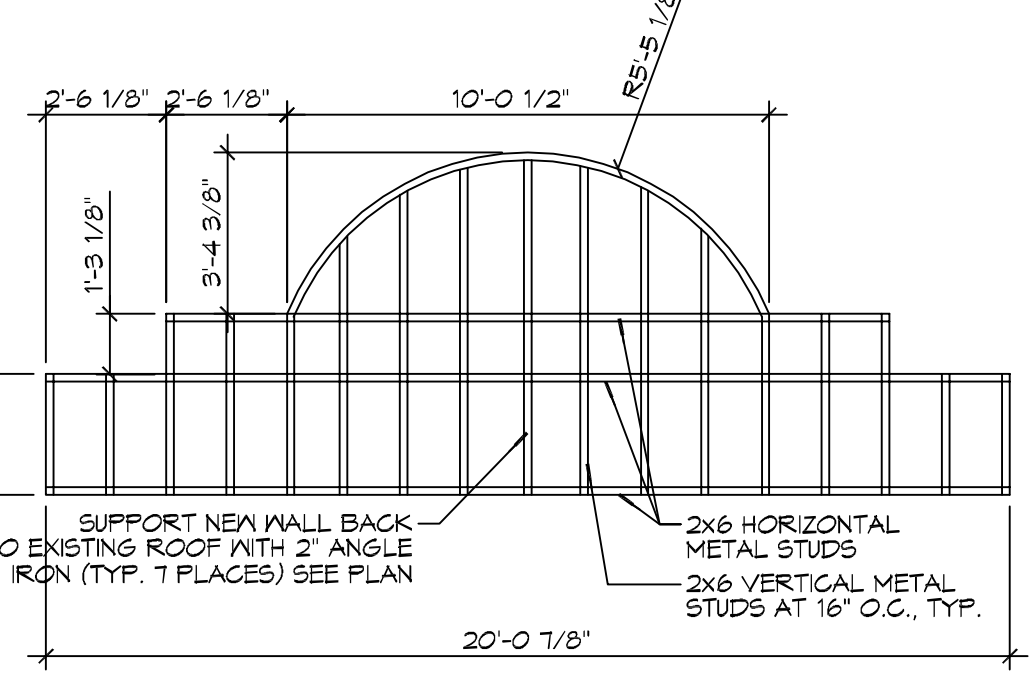
4 PATIO WALL SECT. @ POST
SCALE: 3/4"=1'-0"



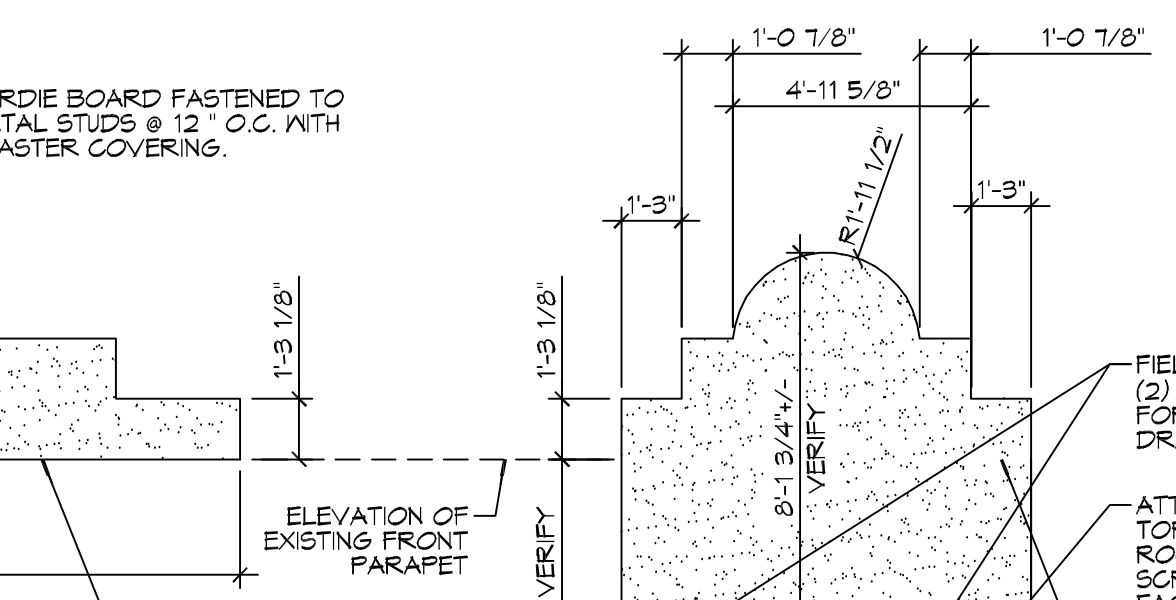
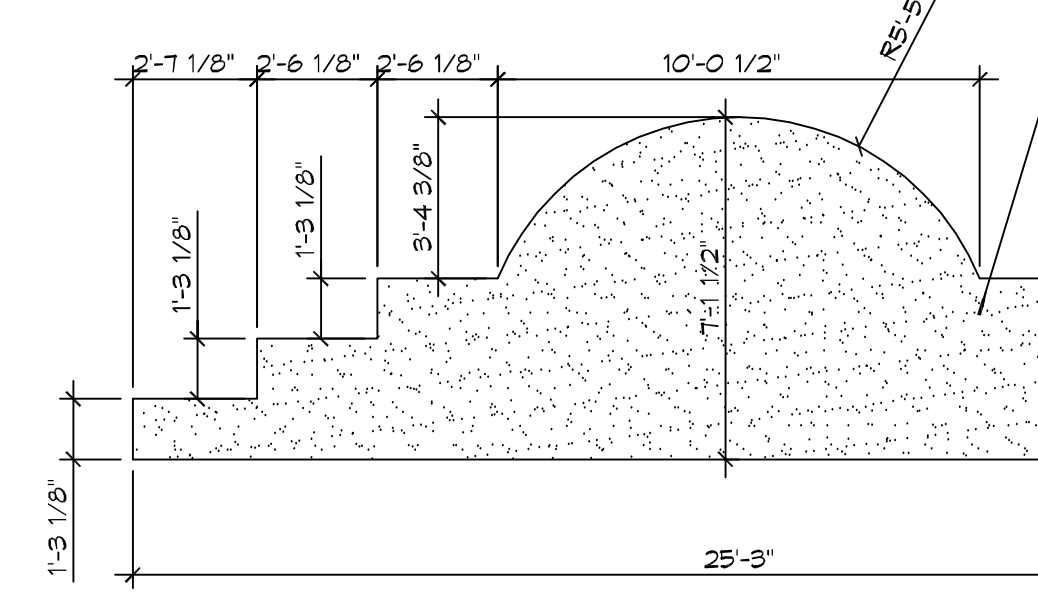
3 PATIO WALL SECTION
SCALE: 3/4"=1'-0"



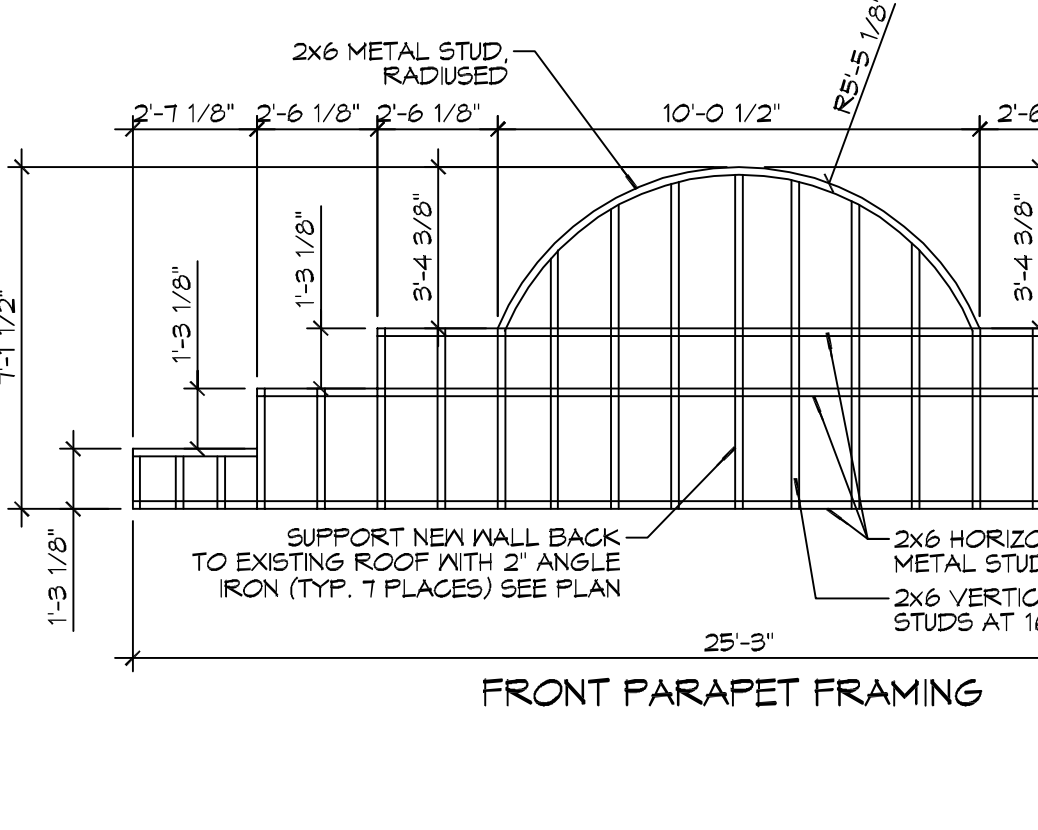
3 PATIO WALL SECTION
SCALE: 3/4"=1'-0"



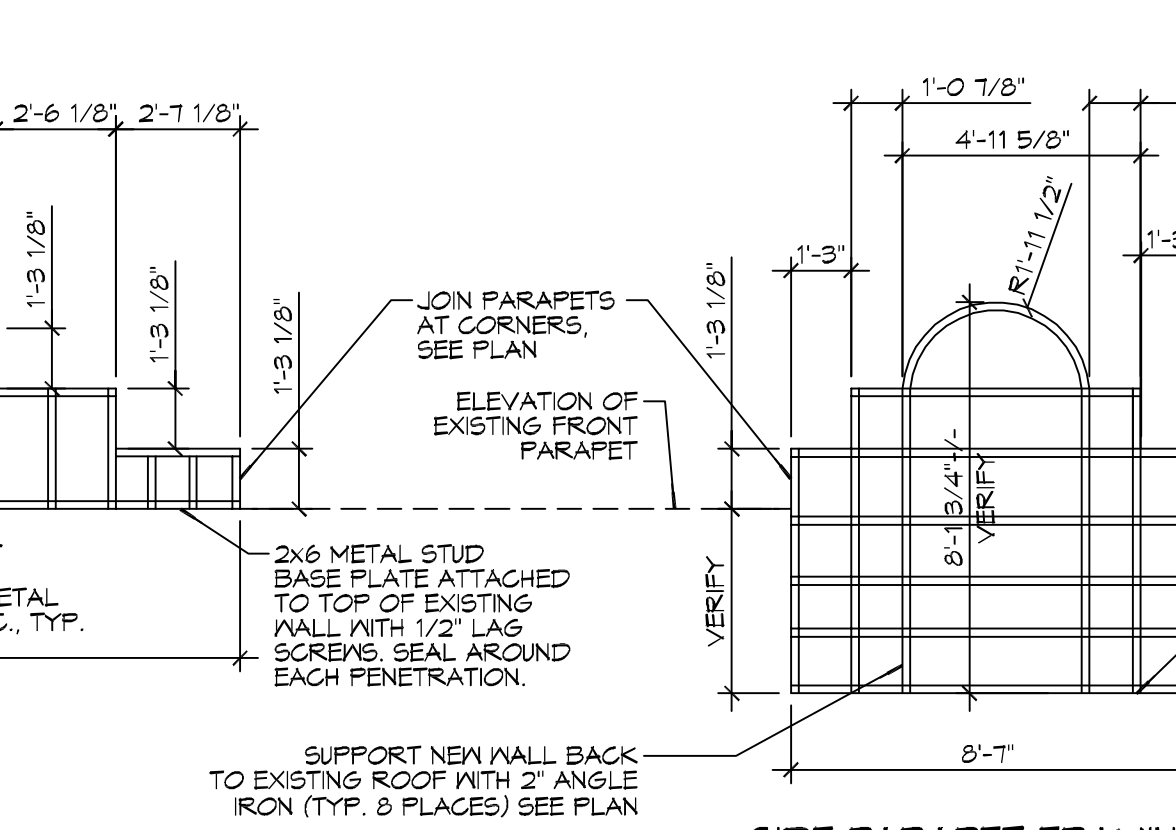
3 REAR PARAPET ELEVATIONS
SCALE: 1/4"=1'-0"



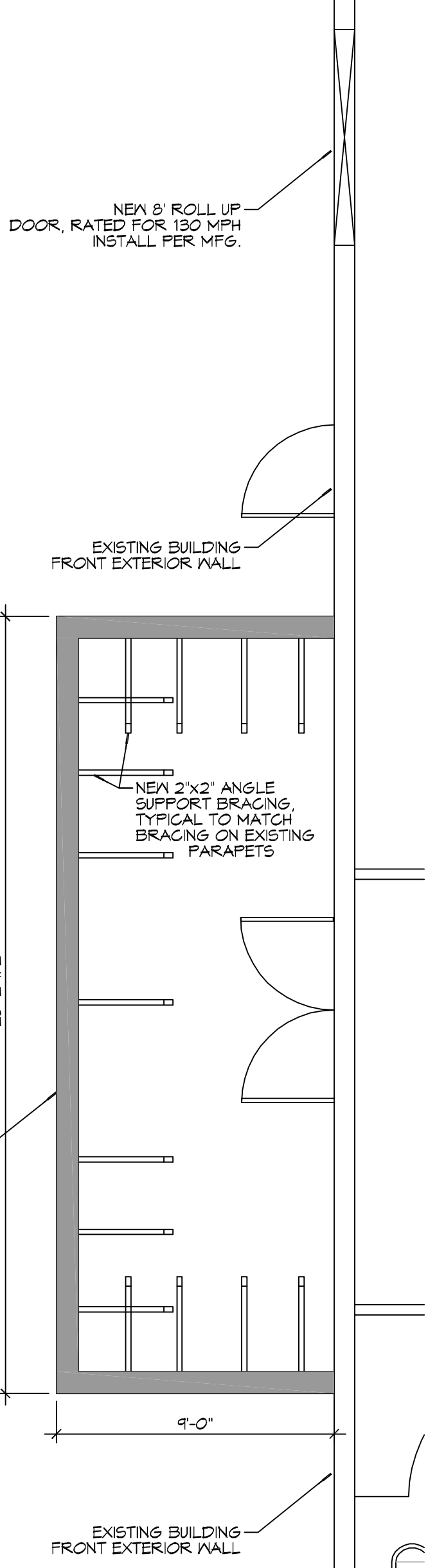
3 FRONT PORCH PARAPET ELEVATIONS
SCALE: 1/4"=1'-0"



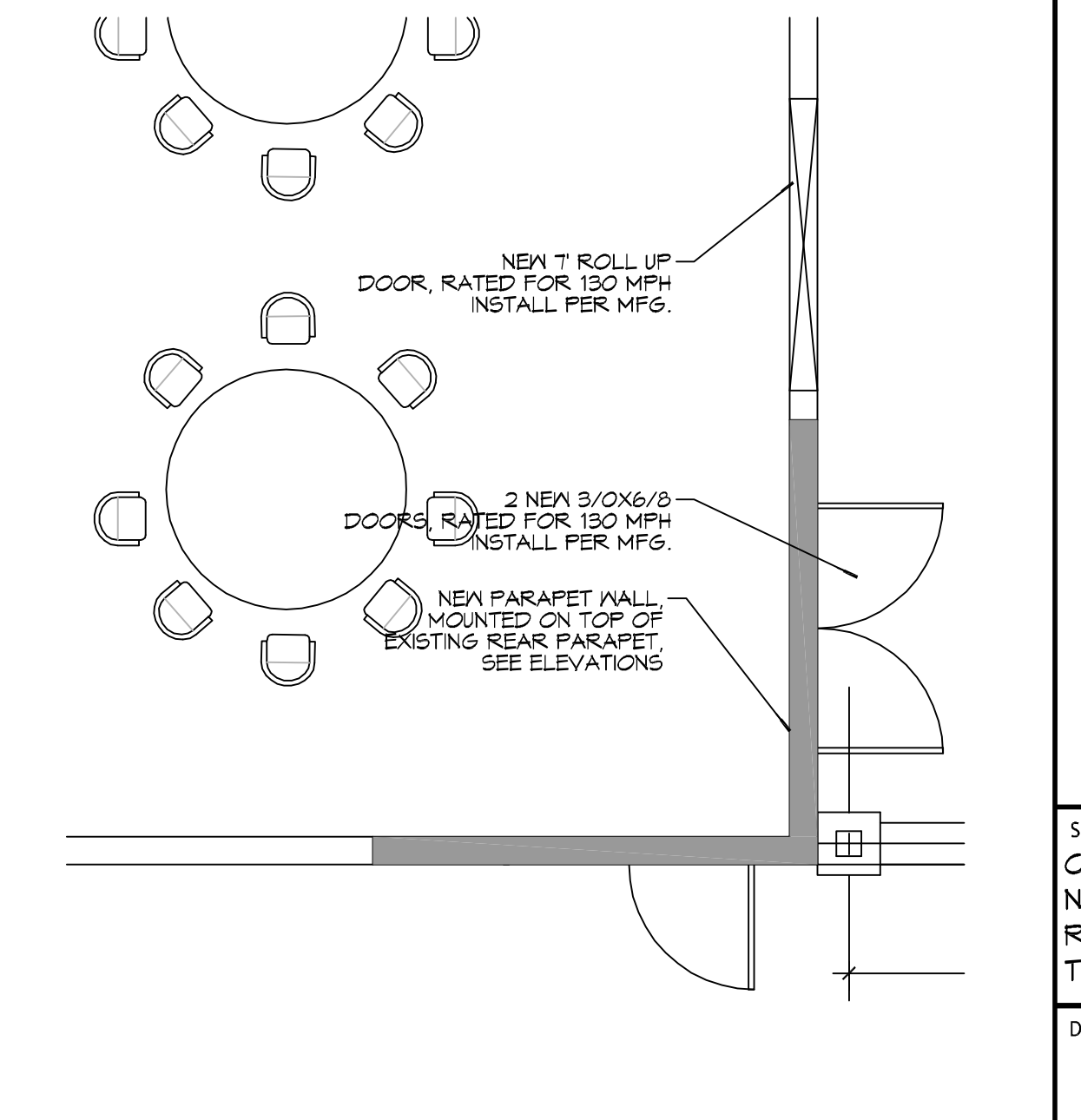
2 FRONT PORCH PARAPET FRAMING
SCALE: 1/4"=1'-0"



1 FRONT PORCH PARAPET PLAN
SCALE: 1/4"=1'-0"



DESIGN CRITERIA:
THE CONSTRUCTION FOR SAID RESIDENCE, WHERE BASIC WIND SPEED IS 130 MILES PER HOUR, IS DESIGNED IN ACCORDANCE WITH: AMERICAN FOREST AND PAPER ASSOCIATION (AF&PA) WOOD FRAME CONSTRUCTION MANUAL FOR ONE AND TWO FAMILY DWELLINGS (WFCM) 2001 EDITION AS WELL AS THE INTERNATIONAL RESIDENTIAL CODE (IRC) 2012 EDITION CHAPTER 4. ALL NEW WORK SHALL BE HURRICANE STRAPPED.



13 REAR PARAPET PLAN
SCALE: 1/4"=1'-0"

DAMMON ENGINEERING, INC.
LOUISIANA & MISSISSIPPI
Chief Engineer: Brian Metcalf, PE
554 Old Spanish Trail
Slidell, LA 70458
www.dammonengineering.com
info@dammonengineering.com
PH: 985.649.5832 F: 985.641.5950

DATE	REVISIONS	# DESCRIPTION

DATE	REVISIONS	# DESCRIPTION

ANEXIMENT REPARANT
601 VETERANS BLVD.
METAIRIE AVE. LOUISIANA
JOB NO: 2266 DATE: 12-09-15
DRAWN BY: CKD/JTL CHECKED BY: BAW

SHEET TITLE: COVERED FRONT PORCH NEW PARAPET DETAILS & REAR PATIO DECK & TRELLIS DETAILS
DRAWING NUMBER: **A103**
SHEET No: 4 of 4