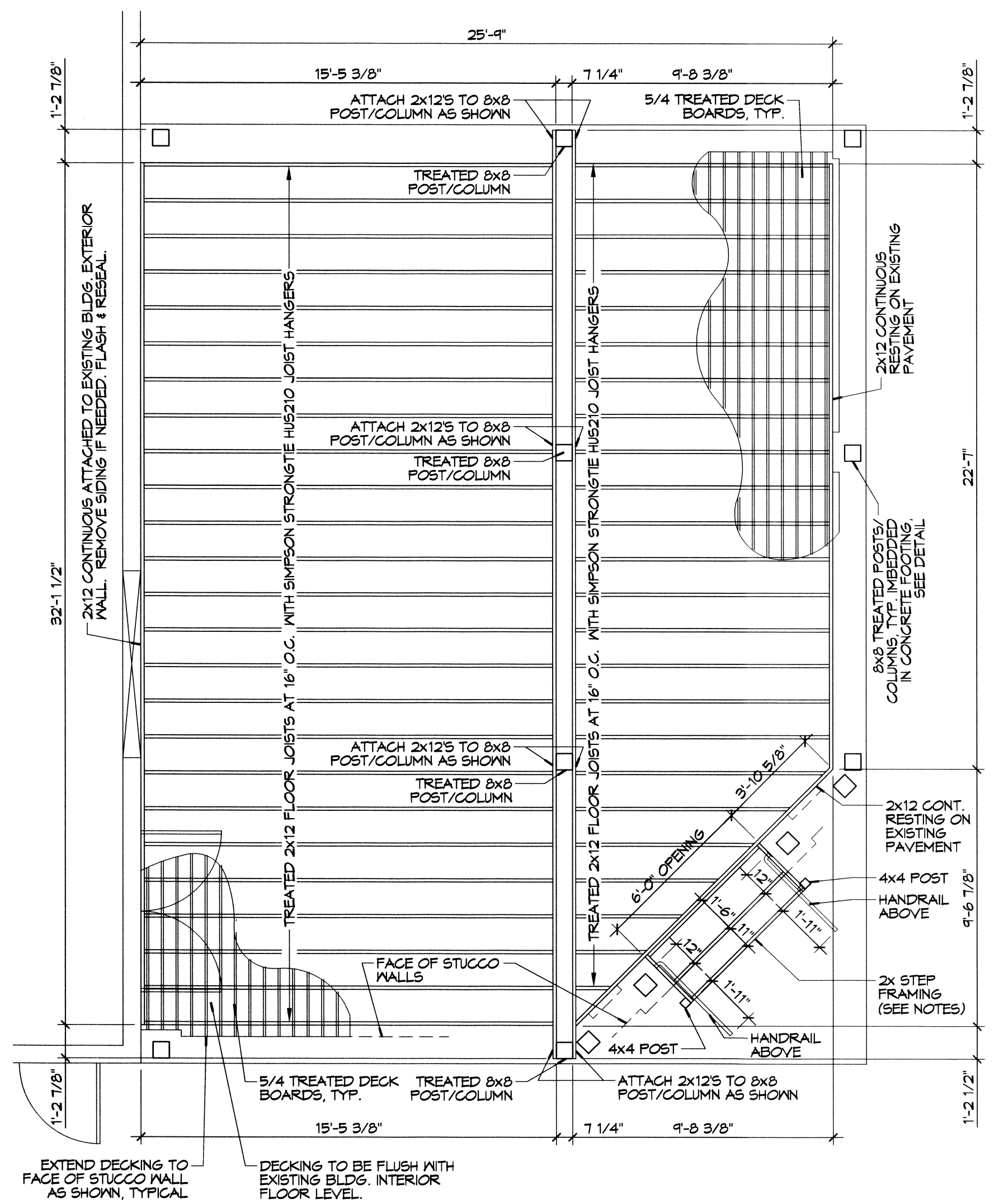
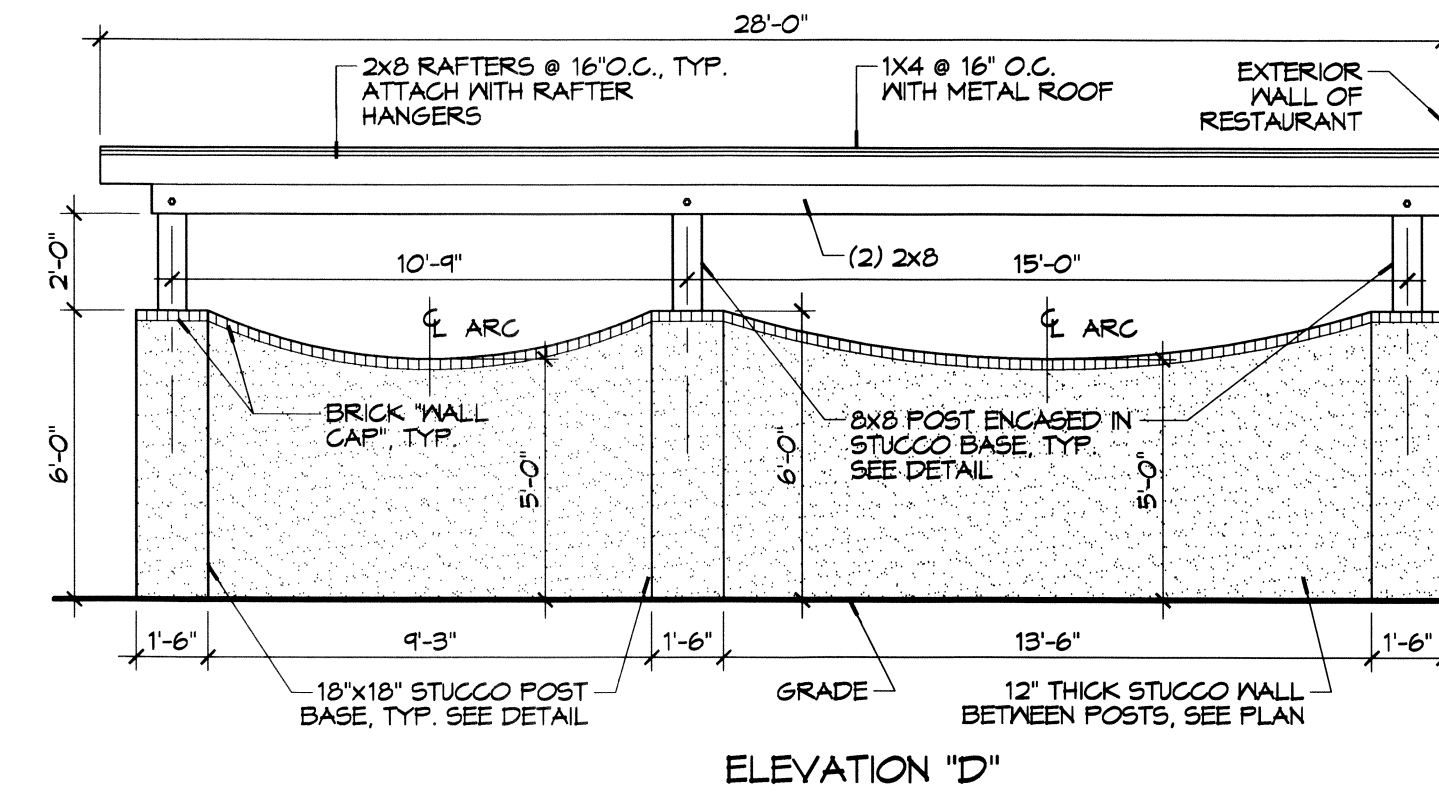


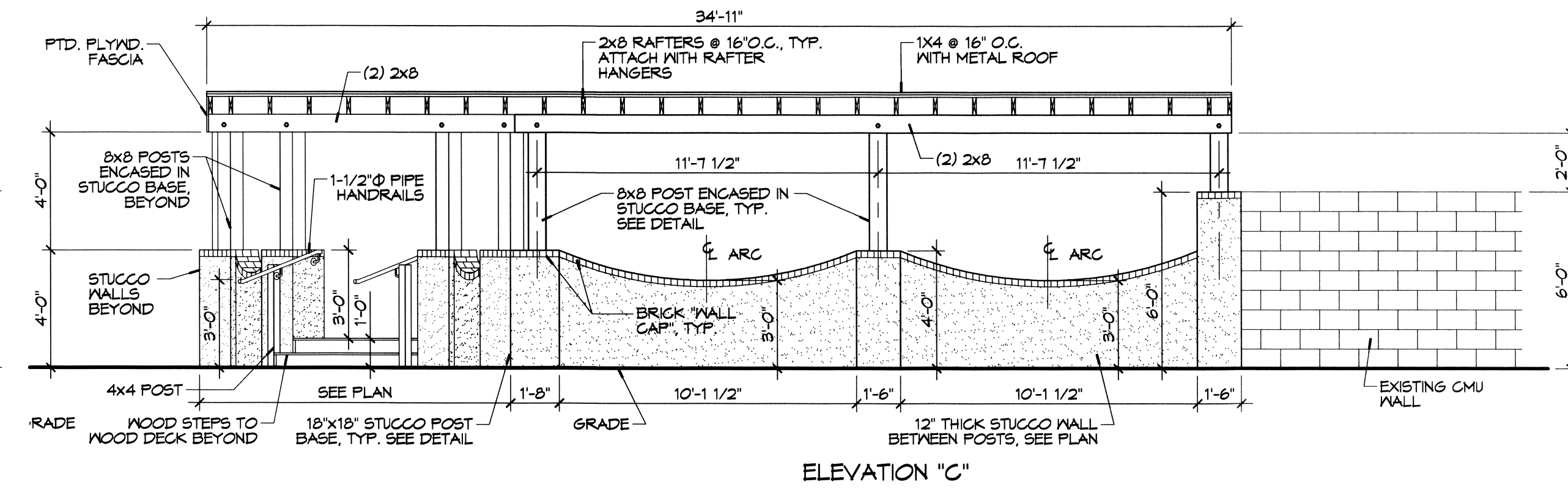
4 DECK/PATIO ROOF FRAMING PLAN
SCALE: 1/4"=1'-0"



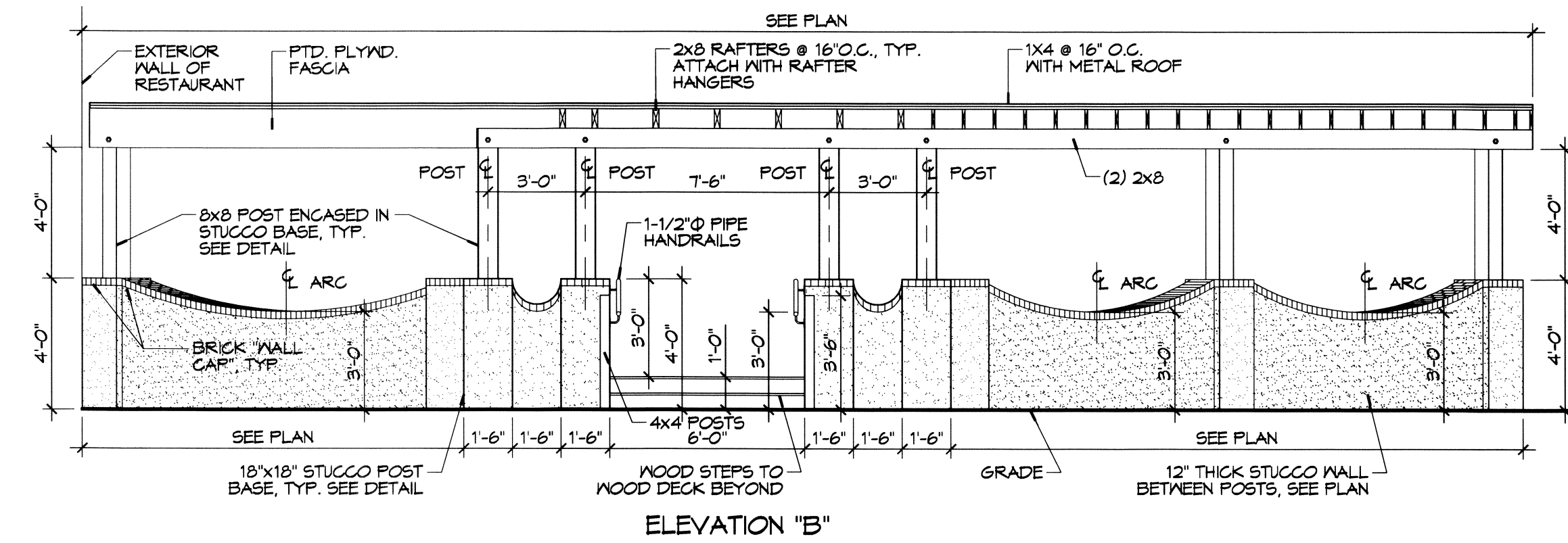
3 PATIO DECK FRAMING PLAN
SCALE: 1/4"=1'-0"



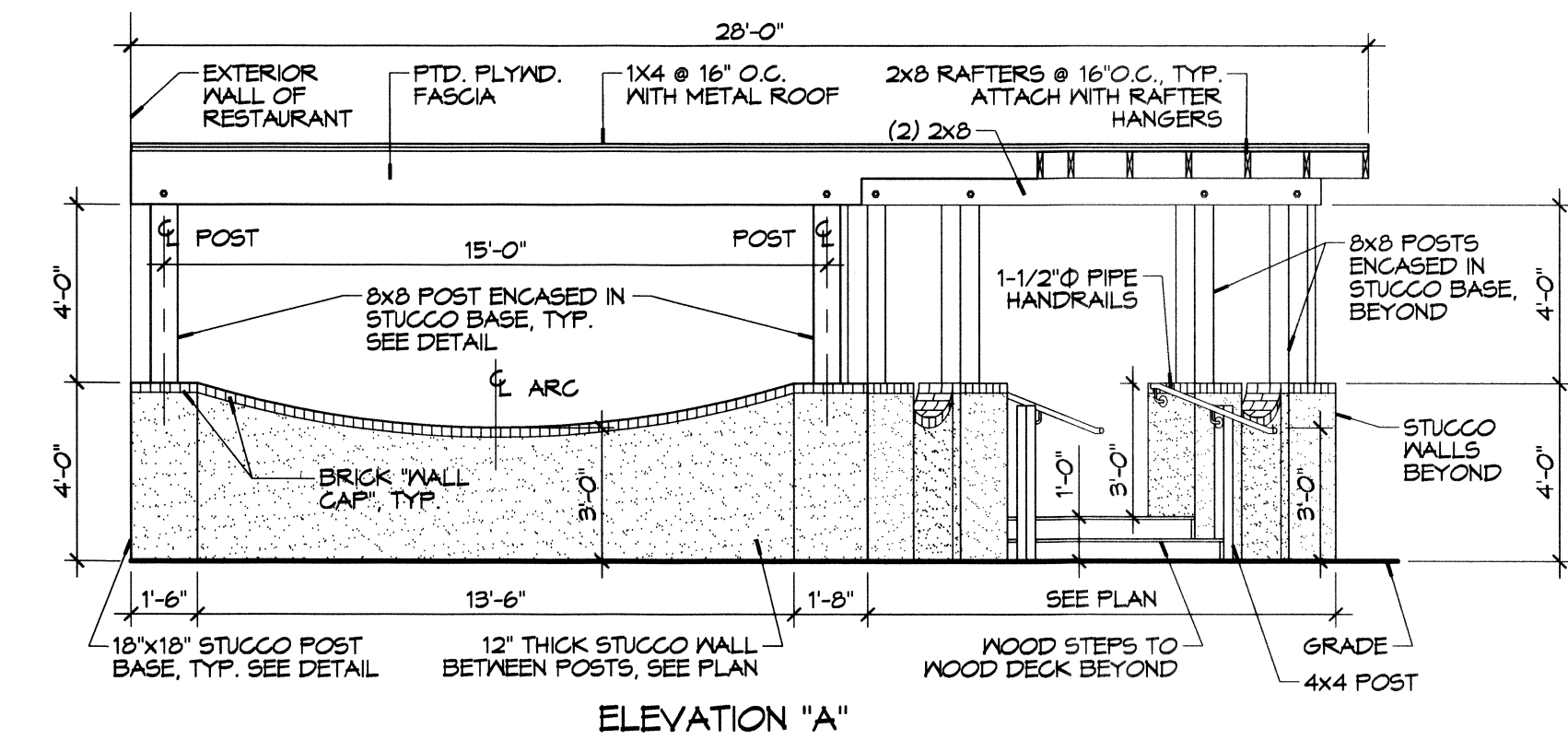
ELEVATION "D"



ELEVATION "C"



ELEVATION "B"

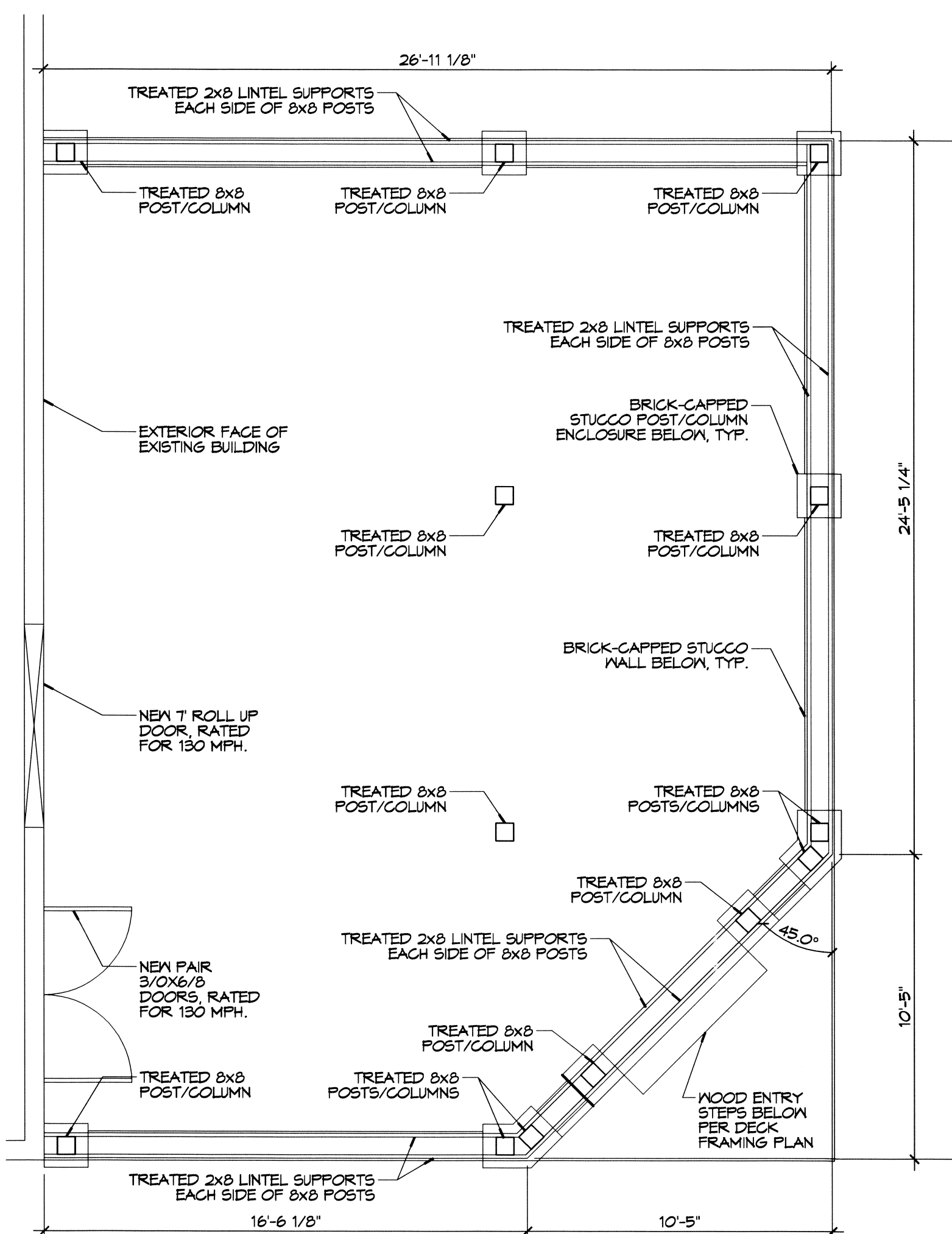


ELEVATION "A"

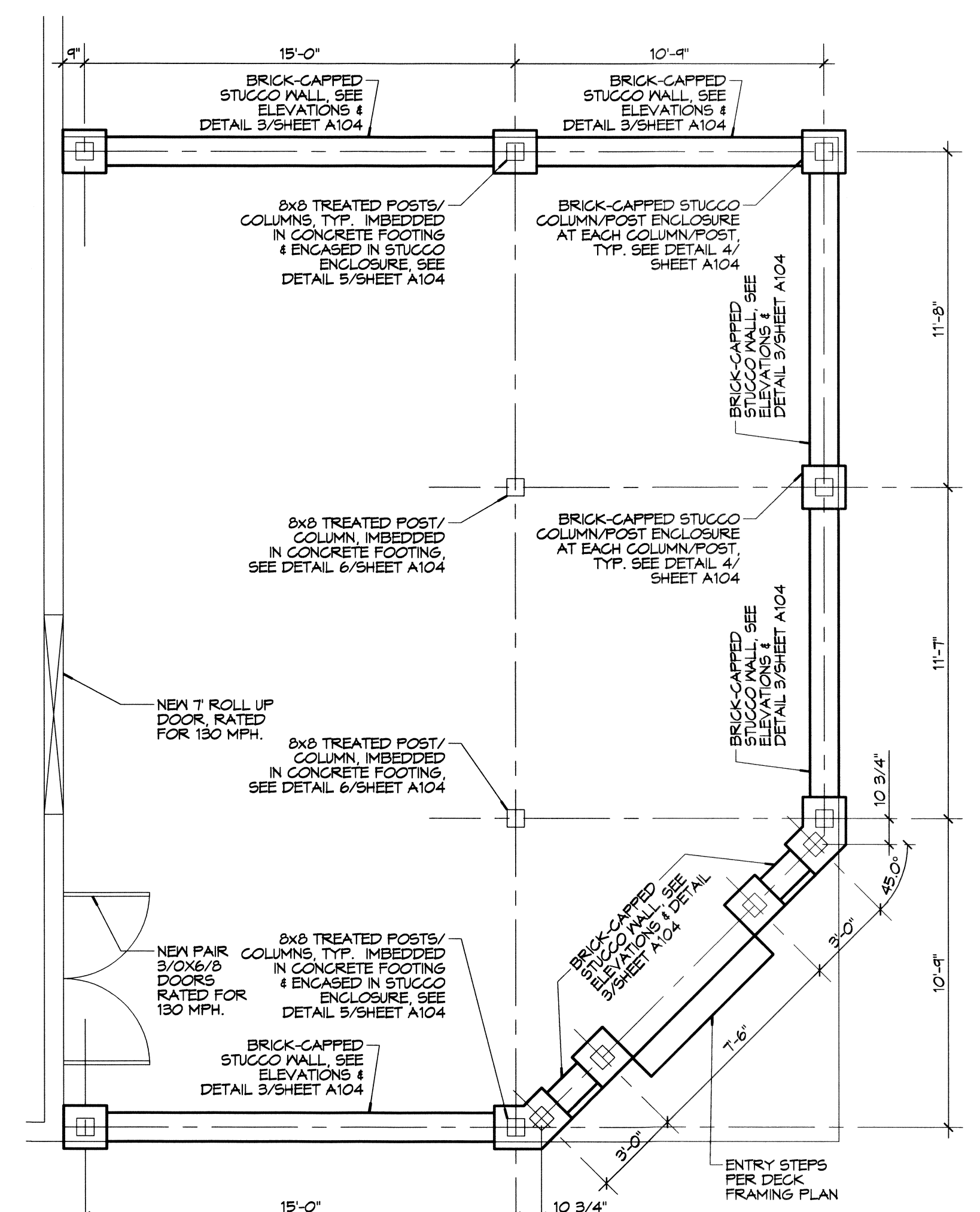
5 DECK/PATIO EXTERIOR ELEVATIONS
SCALE: 1/4"=1'-0"

DESIGN CRITERIA:

THE CONSTRUCTION FOR SAID RESIDENCE, WHERE BASIC WIND SPEED IS 130 MILES PER HOUR, IS DESIGNED IN ACCORDANCE WITH: AMERICAN FOREST AND PAPER ASSOCIATION (AF&PA) WOOD FRAME CONSTRUCTION MANUAL FOR ONE AND TWO FAMILY DWELLINGS (WFCM) 2001 EDITION, AS WELL AS THE INTERNATIONAL RESIDENTIAL CODE (IRC) 2012 EDITION CHAPTER 4. ALL NEW WORK SHALL BE HURRICANE STRAPPED.



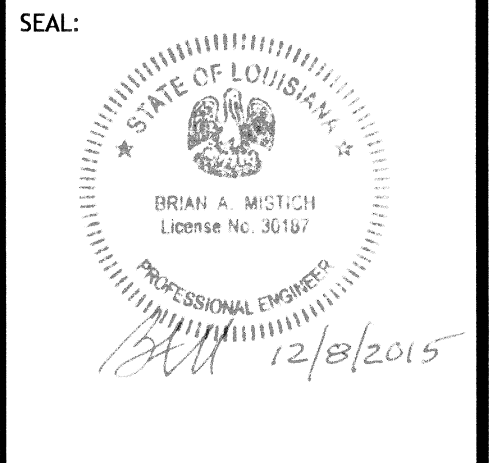
2 DECK/PATIO LINTEL SUPPORT PLAN
SCALE: 1/4"=1'-0"



1 DECK/PATIO WALL & POST LAYOUT
SCALE: 1/4"=1'-0"

- STEP NOTES:**
- STEP FRAMING & STRINGERS TO CONSIST OF TREATED 2x8 AND TREADS TO BE 5/4 DECKING
 - SEE ELEVATIONS FOR STEPS
 - ATTACH 1-1/2" Ø PIPE HANDRAIL AT 3'-0" ABOVE STEPS/DECK, WITH MOUNTING BRACKETS, TO STUCCO WALL & THE 4x4 POST WITH 12" MINIMUM CLEARANCE BETWEEN WALL/POST & HANDRAIL
 - TOP END OF HANDRAIL TO EXTEND 12" PAST TOP STEP/DECK EDGE
 - BOTTOM END OF HANDRAIL TO EXTEND 1'-11" OUT FROM BOTTOM STEP EDGE OF TREAD, AS REQD.

#	DESCRIPTION	DATE



EL PASO MEXICAN RESTAURANT
601 VETERANS BLVD., METairie AVE, LOUISIANA
JOB NO: 2266 DATE: 10/20/15
DRAWN BY: JTL CHECKED BY: BAK