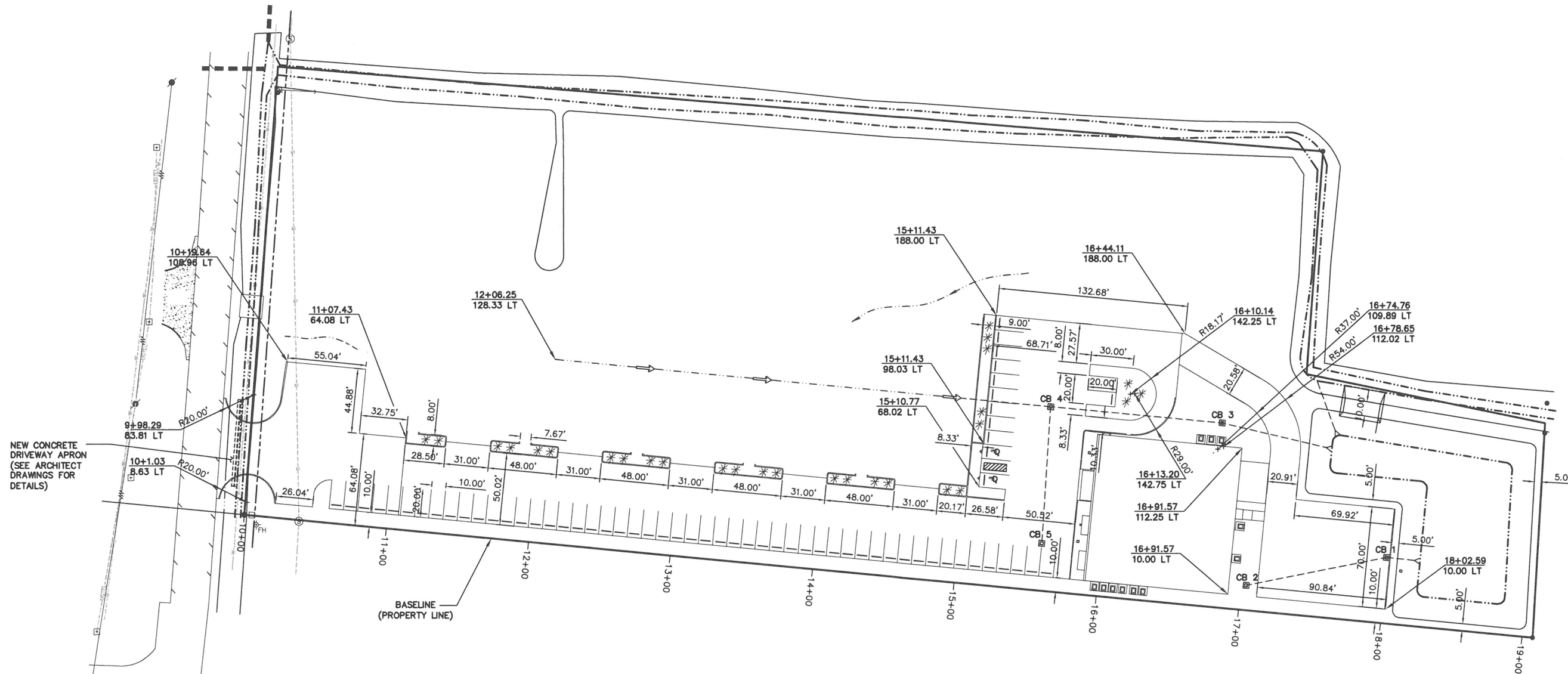


SECTION 1, T9S-R4E AND
SECTION 132, T8S-R4E
LAFAYETTE PARISH, LOUISIANA

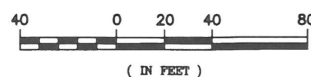


NEW CONCRETE DRIVEWAY APRON
(SEE ARCHITECT DRAWINGS FOR DETAILS)

BASELINE
(PROPERTY LINE)

CB No.	STATION	OFFSET
1	17+99.69	45.90' LT
2	17+03.92	17.30' LT
3	16+75.99	128.33' LT
4	15+55.61	128.33' LT
5	15+58.68	32.97' LT

SCALE: 1" = 80'-0"



LEGEND

17+00.00 STATION ALONG BASELINE
10.46 LT OFFSET FROM BASELINE

THESE DRAWINGS AND/OR THE ACCOMPANYING SPECIFICATION ARE THE EXCLUSIVE PROPERTY OF TOWER ENGINEERING, INC. AND THEIR USE AND PUBLICATION SHALL BE RESTRICTED TO THE ORIGINAL SITE FOR WHICH THEY ARE PREPARED. REUSE, REPRODUCTION OR PUBLICATION BY ANY METHOD, IN WHOLE OR IN PART, IS PROHIBITED EXCEPT BY WRITTEN PERMISSION FROM TOWER ENGINEERING, INC.

TOWER ENGINEERING, INC.

119 Veterinarian Road
Lafayette, LA 70507
(337) 886-7176 Tel.
(337) 896-6663 Fax
1704 Justin Road
Metairie, LA 70001
(504) 556-6126 Tel.
(504) 556-6125 Fax

NO.	DESCRIPTION	BY	DATE
△	PRELIM ISSUE	HG	12/11/07
△	FINAL ISSUE	HG	2/18/08
△			
△			
△			

SITE NUMBER:
2107-001-1015
SITE NAME:
**200 GLORIA SWITCH
PHASE I**
SITE ADDRESS:
200 W. GLORIA SWITCH ROAD
CARENCRO, LA 70507

STAMP HERE:

DRAWN BY:	HG
CHECKED BY:	G.S.G.
DATE DRAWN:	12/11/07
TEI JOB NO.:	2107-001-1015
SHEET TITLE:	

SITE LAYOUT

SHEET NUMBER:	REV. #
C-2	